

UNITED STATES
DEPARTMENT OF THE INTERIOR
BUREAU OF LAND MANAGEMENT

SUBMIT IN TRIPLICATE*
(Other instructions on
reverse side)

FORM APPROVED
OMB NO. 1004-0136
Expires: February 28, 1995

APPLICATION FOR PERMIT TO DRILL OR DEEPEN

1a. TYPE OF WORK

DRILL ☒

DEEPEN ☐

070 Farmington, NM

b. TYPE OF WELL

OIL ☐

GAS ☒

OTHER

SINGLE ☒

MULTIPLE ☐

2. NAME OF OPERATOR

XTO Energy Inc.

3. ADDRESS AND TELEPHONE NO.

2700 Farmington Ave., Bldg. K. Ste 1 Farmington, NM 87401

4. LOCATION OF WELL (Report location clearly and in accordance with any State requirements)

At surface

2,475' FNL & 665' FEL

At proposed prod. zone

14. DISTANCE IN MILES AND DIRECTION FROM NEAREST TOWN OR POST OFFICE*

This well is located approx 16 southeast of the Bloomfield NM post office

15. DISTANCE FROM PROPOSED*
LOCATION TO NEAREST
PROPERTY OR LEASE LINE, FT.
(Also to nearest drlg. unit line, if any)

665'

16. NO. OF ACRES IN LEASE

320.00

17. NO. OF ACRES ASSIGNED
TO THIS WELL

320.00 E/P

18. DISTANCE FROM PROPOSED LOCATION*
TO NEAREST WELL, DRILLING, COMPLETED,
OR APPLIED FOR, ON THIS LEASE, FT.

1,500'

19. PROPOSED DEPTH

6,575'

20. ROTARY OR CABLE TOOLS

0-6,575' Rotary Tools

21. ELEVATIONS (Show whether DF, RT, GR, etc.)

5,932' Ground Level

22. APPROX. DATE WORK WILL START*

Fall 2003

23. PROPOSED CASING AND CEMENTING PROGRAM

SIZE OF HOLE	GRADE SIZE OF CASING	WEIGHT PER FOOT	SETTING DEPTH	QUANTITY OF CEMENT
12-1/4"	8-5/8" J-55	24 #/ft	+ - 350'	+ - 245 sx c1 B cmt
7-7/8"	5-1/2" J-55	15.5 #/ft	+ - 6575'	+ - 1155 sx cmt

XTO Energy plans to drill the above mentioned well as described in the enclosed Surface Use Program.

This well is dedicated to El Paso Field Services and their pipeline plat is attached for ROW approval.

This action is subject to technical and
procedural review pursuant to 43 CFR 3165.3
and appeal pursuant to 43 CFR 3165.4

DRILLING OPERATIONS AUTHORIZED ARE
SUBJECT TO COMPLIANCE WITH ATTACHED
"GENERAL REQUIREMENTS".

APD/ROW

IN ABOVE SPACE DESCRIBE PROPOSED PROGRAM: If proposal is to deepen, give data on present productive zone and proposed new productive zone. If proposal is to drill or deepen directionally, give pertinent data on subsurface locations and measured and true vertical depths. Give blowout preventer program, if any.

24.

SIGNED

JW Patton

TITLE

Drilling Engineer

DATE

7/11/03

(This space for Federal or State office use)

PERMIT NO.

APPROVAL DATE

Application approval does not warrant or certify that the applicant holds legal or equitable title to those rights in the subject lease which would entitle the applicant to conduct operations thereon.

CONDITIONS OF APPROVAL, IF ANY:

/s/ David J. Markiewicz

JAN - 9 2004

APPROVED BY

TITLE

DATE

*See Instructions On Reverse Side

Title 18 U.S.C. Section 1001, makes it a crime for any person knowingly and willfully to make to any department or agency of the United States any false, fictitious or fraudulent statements or representations as to any matter within its jurisdiction.

DISTRICT I
1625 N. French Dr., Hobbs, N.M. 88240

DISTRICT II
811 South First, Artesia, N.M. 88210

DISTRICT III
1000 Rio Brazos Rd., Aztec, N.M. 87410

DISTRICT IV
2040 South Pacheco, Santa Fe, NM 87505

State of New Mexico
Energy, Minerals & Natural Resources Department.

Form C-102
Revised August 15, 2000

OIL CONSERVATION DIVISION

2040 South Pacheco
Santa Fe, NM 87505

Submit to Appropriate District Office
State Lease - 4 Copies
Fee Lease - 3 Copies

☐ AMENDED REPORT

WELL LOCATION AND ACREAGE DEDICATION PLAT

¹ API Number 30-045-31788	² Pool Code 71599	³ Pool Name Basin Dakota
⁴ Property Code 33341	⁵ Property Name EVENSON	⁶ Well Number 4
⁷ OGRID No. 167067	⁸ Operator Name XTO ENERGY INC.	⁹ Elevation 5932'

¹⁰ Surface Location

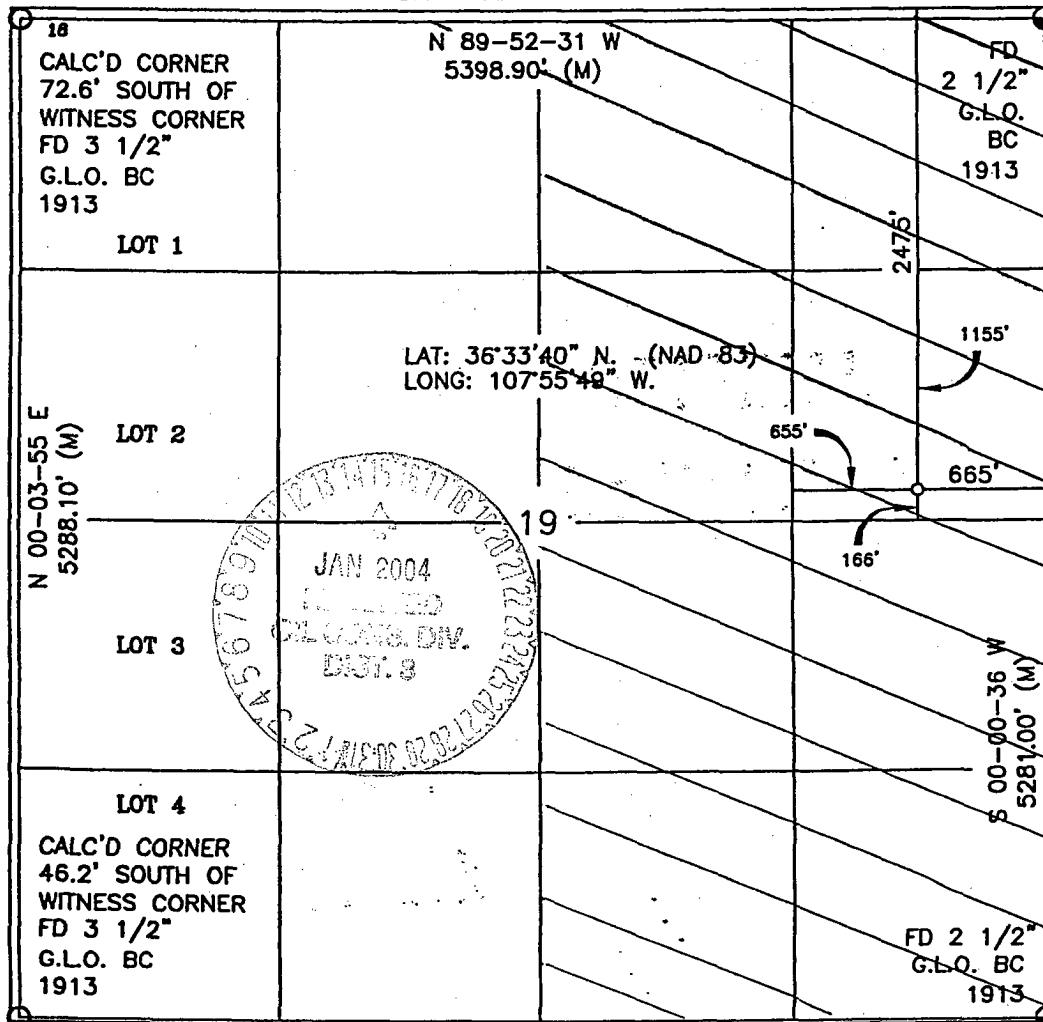
UL or lot no.	Section	Township	Range	Lot Idn	Feet from the	North/South line	Feet from the	East/West line	County
H	19	27-N	10-W		2475'	NORTH	665'	EAST	SAN JUAN

¹¹ Bottom Hole Location If Different From Surface

UL or lot no.	Section	Township	Range	Lot Idn	Feet from the	North/South line	Feet from the	East/West line	County

¹² Dedicated Acres 320 E 12	¹³ Joint or Infill I	¹⁴ Consolidation Code	¹⁵ Order No.
---	------------------------------------	----------------------------------	-------------------------

NO ALLOWABLE WILL BE ASSIGNED TO THIS COMPLETION UNTIL ALL INTERESTS HAVE BEEN CONSOLIDATED OR A NON-STANDARD UNIT HAS BEEN APPROVED BY THE DIVISION



17 OPERATOR CERTIFICATION

I hereby certify that the information contained herein is true and complete to the best of my knowledge and belief

Signature: Heely K. Small
Printed Name: Heely K. Small
Title: Drilling Assistant
Date: 7/11/03

18 SURVEYOR CERTIFICATION

I hereby certify that the well location shown on this plat was plotted from field notes of actual surveys made by me or under my supervision, and that the same is true and correct to the best of my belief

Signature: DAVID A. VOHN
Title: REGISTERED PROFESSIONAL SURVEYOR
Certificate Number: 14827

XTO ENERGY INC.

EVENSON #4

APD Data

July 11, 2003

Location: 2,475' FNL x 665' FEL in Sec 19, T27N R10W

County: San Juan

State: New Mexico

GREATEST PROJECTED TD: 6,575'

APPROX GR ELEV: 5,932'

OBJECTIVE: Basin Dakota

Est KB ELEV: 5,944' (12' AGL)

1. MUD PROGRAM:

INTERVAL	0' to 350'	350' to 4,500'	4,500' to TD
HOLE SIZE	12-1/4"	7-7/8"	7-7/8"
MUD TYPE	FW/Spud Mud	FW/Polymer	PolyPlus
WEIGHT	8.6-9.0	8.4-8.8	8.6-9.0
VISCOSITY	28-32	28-32	45-60
WATER LOSS	NC	NC	8-10

Remarks: Use fibrous materials as needed to control seepage and lost circulation. Pump high viscosity sweeps as needed for hole cleaning. Raise viscosity at TD for logging. Reduce viscosity after logging for cementing purposes.

2. CASING PROGRAM:

Surface Casing: 8-5/8" casing to be set at \pm 350' in 8.8 ppg mud

Interval	Length	Wt	Gr	Cplg	Coll Rating (psi)	Burst Rating (psi)	Jt Str (M-lbs)	ID (in)	Drift (in)	SF Coll	SF Burst	SF Ten
0'-350'	350'	24#	J-55	STC	1370	2950	244	8.097	7.972	7.32	7.95	29.39

Production Casing: 5-1/2" casing to be set at TD in 9.0 ppg mud.

Interval	Length	Wt	Gr	Cplg	Coll Rating (psi)	Burst Rating (psi)	Jt Str (M-lbs)	ID (in)	Drift (in)	SF Coll	SF Burst	SF Ten
0'-TD	6,575'	15.5#	J-55	STC	4040	4810	202	4.950	4.825	1.29	1.53	1.86

3. WELLHEAD:

- A. Casing Head: Larkin Fig 92 (or equivalent), 9" nominal, 2,000 psig WP (4,000 psig test) with 8-5/8" 8rnd thread on bottom and 11-3/4" 8rnd thread on top.
- B. Tubing Head: Larkin Fig 612 (or equivalent), 6.456" nominal, 2,000 psig WP (4,000 psig test), 5-1/2" 8rnd female thread on bottom, 8-5/8" 8rnd thread on top.

4. CEMENT PROGRAM (Slurry design may change slightly, but the plan is to circulate cement to surface on both casing strings):

A. Surface: 8-5/8", 24#, J-55, STC casing to be set at $\pm 350'$.

245 sx of Class "B" cement containing 2% CaCl_2 , 1/4 pps celloflake, mixed at 15.6 ppg, 1.18 ft^3/sk , & 5.20 gal wtr/sk.

Total slurry volume is 289 ft^3 , 100% excess of calculated annular volume to 350'.

B. Production: 5-1/2", 15.5#, J-55, STC casing to be set at $\pm 6,575'$. DV Tool set @ +3,900'

1st Stage

LEAD:

380 sx of Premium Lite HS (Type III/Poz/Gel) with 2% salt, 1/4 pps cello, 0.2% dispersant, 0.5% fluid loss & 2% LCM mixed at 12.5 ppg, 2.01 ft^3/sk , 10.55 gal wtr/sx.

TAIL:

100 sx Type III with 5% bonding additive, 1/4 pps cello, 2% LCM, 0.3% dispersant & 0.2% fluid loss mixed at 14.2 ppg, 1.54 cuft/sx, 8.00 gal/sx.

2nd Stage

LEAD:

575 sx of Type III with 8% gel, 1/4 pps cello & 2% LCM mixed at 11.4 ppg, 3.03 ft^3/sk , 18.50 gal wtr/sx.

TAIL:

100 sx Type III neat mixed at 14.5 ppg, 1.39 cuft/sx, 6.3 gal/sx.

Total estimated slurry volume for the 5-1/2" production casing is 2,800 ft^3 .

Note: The slurry design may change slightly based upon actual conditions. Final cement volumes will be determined from the caliper logs plus 40%. It will be attempted to circulate cement to the surface.

5. LOGGING PROGRAM:

A. Mud Logger: The mud logger will come on at 4,800' and will remain on the hole until TD. The mud will be logged in 10' intervals.

B. Open Hole Logs as follows: Run Array Induction/SFL/GR/SP fr/TD (6,575') to the bottom of the surface csg. Run Neutron/Lithodensity/Pe/GR/Cal from 6,575' to 4,575'. FMI log will be run from TD to 6,050'.

BOP SCHEMATIC FOR DRILLING OPERATIONS CLASS 1 (2M) NORMAL PRESSURE

TESTING PROCEDURE

1. Test BOP after installation:

Pressure test BOP to 200-300 psig (low pressure) for 5 min.

Test BOP to Working Press or to 70% internal yield of surf csg (10 min).

2. Test operation of (both) rams on every trip.

3. Check and record Accumulator pressure on every tour.

4. Re-pressure test BOP stack after changing out rams.

5. Have kelly cock valve with handle available.

6. Have safety valve and subs to fit all sizes of drill string.

