

District I
1625 N. French Dr., Hobbs, NM 88240
District II
1301 W. Grand Avenue, Artesia, NM 88210
District III
1000 Rio Brazos Rd., Aztec, NM 87410
District IV
1220 S. St. Francis Dr., Santa Fe, NM 87505

State of New Mexico
Energy, Minerals & Natural Resources Department

Form C-102
Revised October 12, 2005
Instructions on back
Submit to Appropriate District Office
State Lease - 4 Copies
Fee Lease - 3 Copies

OIL CONSERVATION DIVISION
1220 South St. Francis Dr.
Santa Fe, NM 87505

AMENDED REPORT

"AS DRILLED PLAT"

WELL LOCATION AND ACREAGE DEDICATION PLAT

¹ API Number 30-039-30790		² Pool Code 72319 / 71599		³ Pool Name BLANCO MESAVERDE / BASIN DAKOTA	
⁴ Property Code 7462		⁵ Property Name SAN JUAN 28-6 UNIT			⁶ Well Number 122N
⁷ GRID No 14538		⁸ Operator Name BURLINGTON RESOURCES OIL & GAS COMPANY LP			⁹ Elevation 6593'

¹⁰ Surface Location

UL or lot no.	Section	Township	Range	Lot Idn	Feet from the	North/South line	Feet from the	East/West line	County
K	15	28N	6W		1550	SOUTH	1540	WEST	RIO ARRIBA

¹¹ Bottom Hole Location If Different From Surface

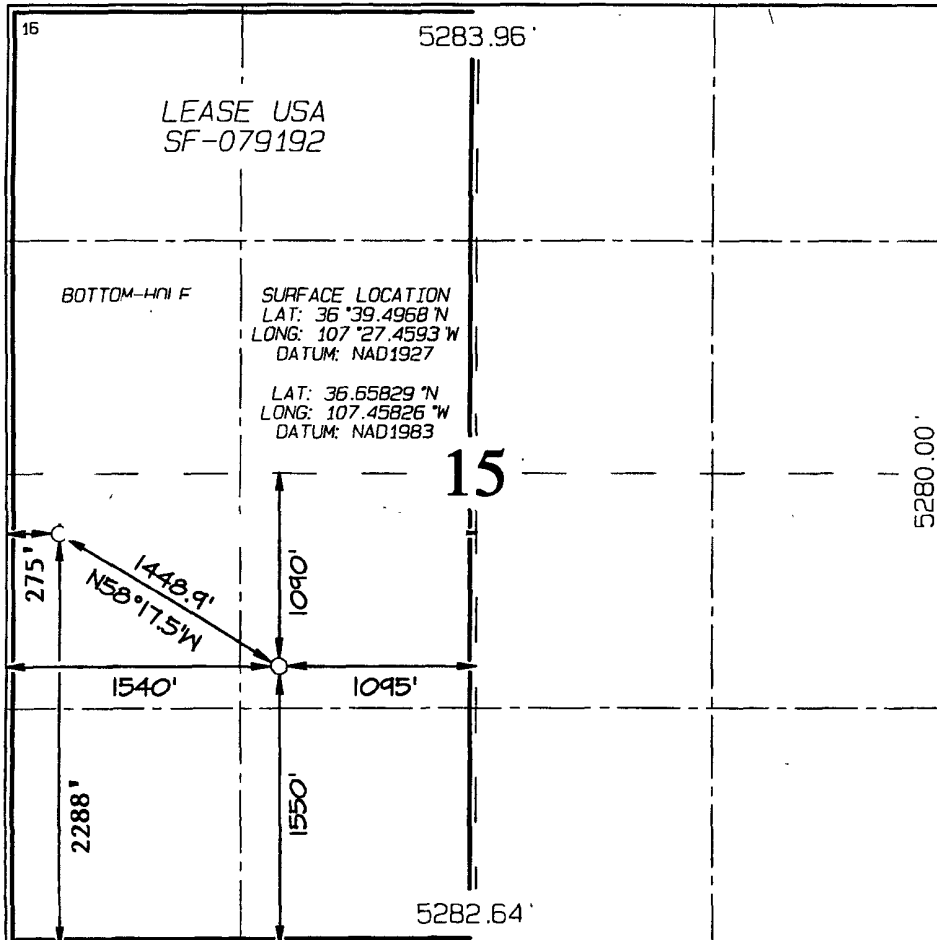
UL or lot no.	Section	Township	Range	Lot Idn	Feet from the	North/South line	Feet from the	East/West line	County
L	15	28N	6W		2288	SOUTH	275	WEST	RIO ARRIBA

¹² Dedicated Acres	320.0 Acres - W/2 (MV) 320.0 Acres - W/2 (DK)	¹³ Joint or Infill	¹⁴ Consolidation Code	¹⁵ Order No.
-------------------------------	--	-------------------------------	----------------------------------	-------------------------

RCVD APR 26 '10
OIL CONS. DIV.

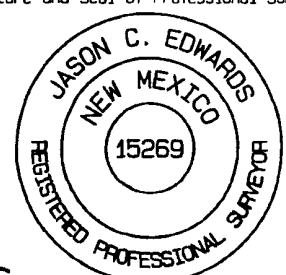
NO ALLOWABLE WILL BE ASSIGNED TO THIS COMPLETION UNTIL ALL INTERESTS HAVE BEEN CONSOLIDATED OR A NON-STANDARD UNIT HAS BEEN APPROVED BY THE DIVISION **DIST. 3**

4/26/10



¹⁷ OPERATOR CERTIFICATION
I hereby certify that the information contained herein is true and complete to the best of my knowledge and belief, and that this organization either owns a working interest or unleased mineral interest in the land including the proposed bottom-hole location or has a right to drill this well at this location pursuant to a contract with an owner of such a mineral or working interest, or to a voluntary pooling agreement or a compulsory pooling order heretofore entered by the division.
Crystal Tafoya 4/22/10
Signature Date
Crystal Tafoya 4/22/2010
Printed Name

¹⁸ SURVEYOR CERTIFICATION
I hereby certify that the well location shown on this plat was plotted from field notes of actual surveys made by me or under my supervision, and that the same is true and correct to the best of my belief
Survey Date: FEBRUARY 16, 2009
Signature and Seal of Professional Surveyor



JASON C. EDWARDS
Certificate Number 15269

P.A

B 4/27



COP Deviation Report
SAN JUAN 28-6 UNIT #122N

Operator BURLINGTON RESOURCES OIL & GAS COMPANY LP	Legal WellName SAN JUAN 28-6 UNIT #122N	API / UWI 3003930790	County RIO ARRIBA	State/Province NEW MEXICO
Surface Legal Location 015-028N-006W-K	N/S Dist (ft) 1,550.00	N/S Ref FSL	E/W Dist (ft) 1,540.00	E/W Ref FWL

Survey Data					
Date	MD (ftKB)	Incl (°)	Method	Survey Company	
1/2/2010	0.00	0.00	IncAzi-MWD	Scientific Drilling	
12/28/2009	130.00	0.75	Inc-Drop	MO-TE DRILLING INC.	
12/28/2009	236.00	0.50	Inc-Drop	MO-TE DRILLING INC.	
12/31/2009	240.00	0.24	IncAzi-MWD	Scientific Drilling	
12/31/2009	271.00	0.81	IncAzi-MWD	Scientific Drilling	
12/31/2009	301.00	0.59	IncAzi-MWD	Scientific Drilling	
12/31/2009	332.00	1.18	IncAzi-MWD	Scientific Drilling	
12/31/2009	363.00	1.92	IncAzi-MWD	Scientific Drilling	
12/31/2009	393.00	2.55	IncAzi-MWD	Scientific Drilling	
12/31/2009	424.00	3.30	IncAzi-MWD	Scientific Drilling	
12/31/2009	455.00	3.60	IncAzi-MWD	Scientific Drilling	
12/31/2009	485.00	4.16	IncAzi-MWD	Scientific Drilling	
12/31/2009	515.00	4.69	IncAzi-MWD	Scientific Drilling	
12/31/2009	545.00	5.23	IncAzi-MWD	Scientific Drilling	
12/31/2009	576.00	5.93	IncAzi-MWD	Scientific Drilling	
12/31/2009	607.00	6.85	IncAzi-MWD	Scientific Drilling	
12/31/2009	638.00	7.53	IncAzi-MWD	Scientific Drilling	
12/31/2009	669.00	8.37	IncAzi-MWD	Scientific Drilling	
12/31/2009	699.00	9.12	IncAzi-MWD	Scientific Drilling	
12/31/2009	729.00	9.94	IncAzi-MWD	Scientific Drilling	
12/31/2009	759.00	10.74	IncAzi-MWD	Scientific Drilling	
12/31/2009	789.00	11.27	IncAzi-MWD	Scientific Drilling	
12/31/2009	837.00	12.72	IncAzi-MWD	Scientific Drilling	
12/31/2009	882.00	13.73	IncAzi-MWD	Scientific Drilling	
1/1/2010	927.00	14.89	IncAzi-MWD	Scientific Drilling	
1/1/2010	972.00	16.08	IncAzi-MWD	Scientific Drilling	
1/1/2010	1,017.00	17.24	IncAzi-MWD	Scientific Drilling	
1/1/2010	1,062.00	17.95	IncAzi-MWD	Scientific Drilling	
1/1/2010	1,107.00	19.48	IncAzi-MWD	Scientific Drilling	
1/1/2010	1,152.00	20.49	IncAzi-MWD	Scientific Drilling	
1/1/2010	1,197.00	21.67	IncAzi-MWD	Scientific Drilling	
1/1/2010	1,242.00	22.49	IncAzi-MWD	Scientific Drilling	
1/1/2010	1,287.00	22.36	IncAzi-MWD	Scientific Drilling	
1/1/2010	1,332.00	22.80	IncAzi-MWD	Scientific Drilling	
1/1/2010	1,377.00	22.43	IncAzi-MWD	Scientific Drilling	

I, the undersigned, certify that I acting in my capacity as _____ for ConocoPhillips Company, am authorized by said Company to make this report; and that said report was prepared under my supervision and directions, and that the facts stated herein are true to the best of my knowledge and belief.

Subscribed and sworn to me this _____

Notary Public in and for San Juan County, New Mexico

My Commission expires _____

COP Deviation Report
SAN JUAN 28-6 UNIT #122N

Survey Data					
Date	MD (ftKB)	Incl (°)	Method	Survey Company	
1/1/2010	1,422.00	22.79	IncAzi-MWD	Scientific Drilling	
1/1/2010	1,467.00	22.93	IncAzi-MWD	Scientific Drilling	
1/1/2010	1,512.00	23.02	IncAzi-MWD	Scientific Drilling	
1/1/2010	1,557.00	22.05	IncAzi-MWD	Scientific Drilling	
1/1/2010	1,602.00	22.71	IncAzi-MWD	Scientific Drilling	
1/1/2010	1,647.00	21.91	IncAzi-MWD	Scientific Drilling	
1/1/2010	1,692.00	22.10	IncAzi-MWD	Scientific Drilling	
1/1/2010	1,737.00	22.77	IncAzi-MWD	Scientific Drilling	
1/1/2010	1,782.00	23.37	IncAzi-MWD	Scientific Drilling	
1/1/2010	1,827.00	24.34	IncAzi-MWD	Scientific Drilling	
1/1/2010	1,872.00	25.41	IncAzi-MWD	Scientific Drilling	
1/1/2010	1,917.00	26.25	IncAzi-MWD	Scientific Drilling	
1/2/2010	2,007.00	26.17	IncAzi-MWD	Scientific Drilling	
1/1/2010	2,097.00	25.99	IncAzi-MWD	Scientific Drilling	
1/1/2010	2,142.00	26.18	IncAzi-MWD	Scientific Drilling	
1/1/2010	2,187.00	26.60	IncAzi-MWD	Scientific Drilling	
1/1/2010	2,232.00	26.14	IncAzi-MWD	Scientific Drilling	
1/1/2010	2,322.00	26.43	IncAzi-MWD	Scientific Drilling	
1/1/2010	2,412.00	26.35	IncAzi-MWD	Scientific Drilling	
1/1/2010	2,502.00	26.10	IncAzi-MWD	Scientific Drilling	
1/1/2010	2,592.00	25.97	IncAzi-MWD	Scientific Drilling	
1/1/2010	2,682.00	25.52	IncAzi-MWD	Scientific Drilling	
1/1/2010	2,772.00	26.60	IncAzi-MWD	Scientific Drilling	
1/1/2010	2,862.00	27.40	IncAzi-MWD	Scientific Drilling	
1/1/2010	2,951.00	27.96	IncAzi-MWD	Scientific Drilling	
1/1/2010	3,041.00	27.56	IncAzi-MWD	Scientific Drilling	
1/1/2010	3,131.00	27.47	IncAzi-MWD	Scientific Drilling	
1/1/2010	3,221.00	27.07	IncAzi-MWD	Scientific Drilling	
1/1/2010	3,311.00	25.27	IncAzi-MWD	Scientific Drilling	
1/1/2010	3,401.00	23.94	IncAzi-MWD	Scientific Drilling	
1/1/2010	3,491.00	22.65	IncAzi-MWD	Scientific Drilling	
1/1/2010	3,581.00	22.63	IncAzi-MWD	Scientific Drilling	
1/1/2010	3,626.00	22.01	IncAzi-MWD	Scientific Drilling	
1/1/2010	3,671.00	22.26	IncAzi-MWD	Scientific Drilling	
1/2/2010	3,716.00	23.32	IncAzi-MWD	Scientific Drilling	
1/2/2010	3,761.00	24.76	IncAzi-MWD	Scientific Drilling	
1/2/2010	3,806.00	25.85	IncAzi-MWD	Scientific Drilling	
1/2/2010	3,851.00	25.84	IncAzi-MWD	Scientific Drilling	
1/2/2010	3,896.00	24.83	IncAzi-MWD	Scientific Drilling	

I, the undersigned, certify that I acting in my capacity as _____ for ConocoPhillips Company, am authorized by said Company to make this report; and that said report was prepared under my supervision and directions, and that the facts stated herein are true to the best of my knowledge and belief.

Subscribed and sworn to me this _____

Notary Public in and for San Juan County, New Mexico

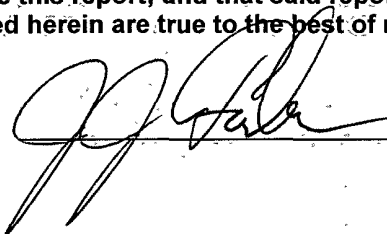
My Commission expires _____

Survey Data

Date	MD (ftKB)	Incl (°)	Method	Survey Company
1/2/2010	3,941.00	22.84	IncAzi-MWD	Scientific Drilling
1/2/2010	3,986.00	21.41	IncAzi-MWD	Scientific Drilling
1/2/2010	4,031.00	19.37	IncAzi-MWD	Scientific Drilling
1/2/2010	4,076.00	17.61	IncAzi-MWD	Scientific Drilling
1/2/2010	4,121.00	16.70	IncAzi-MWD	Scientific Drilling
1/2/2010	4,166.00	14.47	IncAzi-MWD	Scientific Drilling
1/2/2010	4,211.00	12.59	IncAzi-MWD	Scientific Drilling
1/2/2010	4,256.00	11.66	IncAzi-MWD	Scientific Drilling
1/2/2010	4,301.00	10.13	IncAzi-MWD	Scientific Drilling
1/2/2010	4,346.00	8.62	IncAzi-MWD	Scientific Drilling
1/2/2010	4,391.00	7.68	IncAzi-MWD	Scientific Drilling
1/2/2010	4,436.00	7.11	IncAzi-MWD	Scientific Drilling
1/2/2010	4,481.00	6.46	IncAzi-MWD	Scientific Drilling
1/2/2010	4,526.00	5.77	IncAzi-MWD	Scientific Drilling
1/2/2010	4,571.00	4.60	IncAzi-MWD	Scientific Drilling
1/2/2010	4,616.00	4.11	IncAzi-MWD	Scientific Drilling
1/2/2010	4,661.00	3.96	IncAzi-MWD	Scientific Drilling
1/2/2010	4,681.00	3.66	IncAzi-MWD	Scientific Drilling
1/2/2010	4,733.00	3.00	IncAzi-MWD	Scientific Drilling
1/12/2010	8,172.00	0.75	Inc-WL	PHOENIX

RCVD APR 26 '10
OIL CONS. DIV.
DIST. 3

I, the undersigned, certify that I acting in my capacity as Drilling Engineer for ConocoPhillips Company, am authorized by said Company to make this report; and that said report was prepared under my supervision and directions, and that the facts stated herein are true to the best of my knowledge and belief.

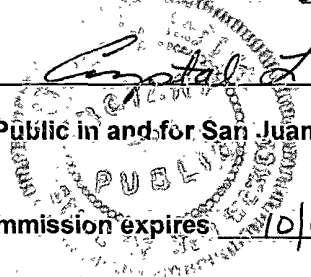


Subscribed and sworn to me this April 23, 2010



Notary Public in and for San Juan County, New Mexico

My Commission expires 10/12/2010



RD# APR 26 '10
OIL CONS. DIV.
DIST. 3

ConocoPhillips

SJB (NM Central)
SEC 15-T28N-R6W
SJ 28-6 #122N

Original Hole

API # 30-039-30790

Survey: Actual

Standard Survey Report

17 February, 2010

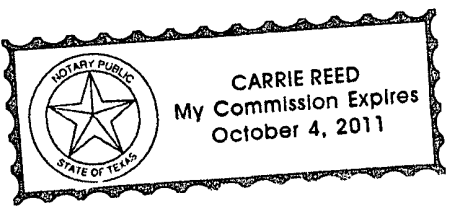
This survey is correct to the best of my knowledge and is supported by actual field data.

[Signature]

Notorized this date 19th of February, 2010.

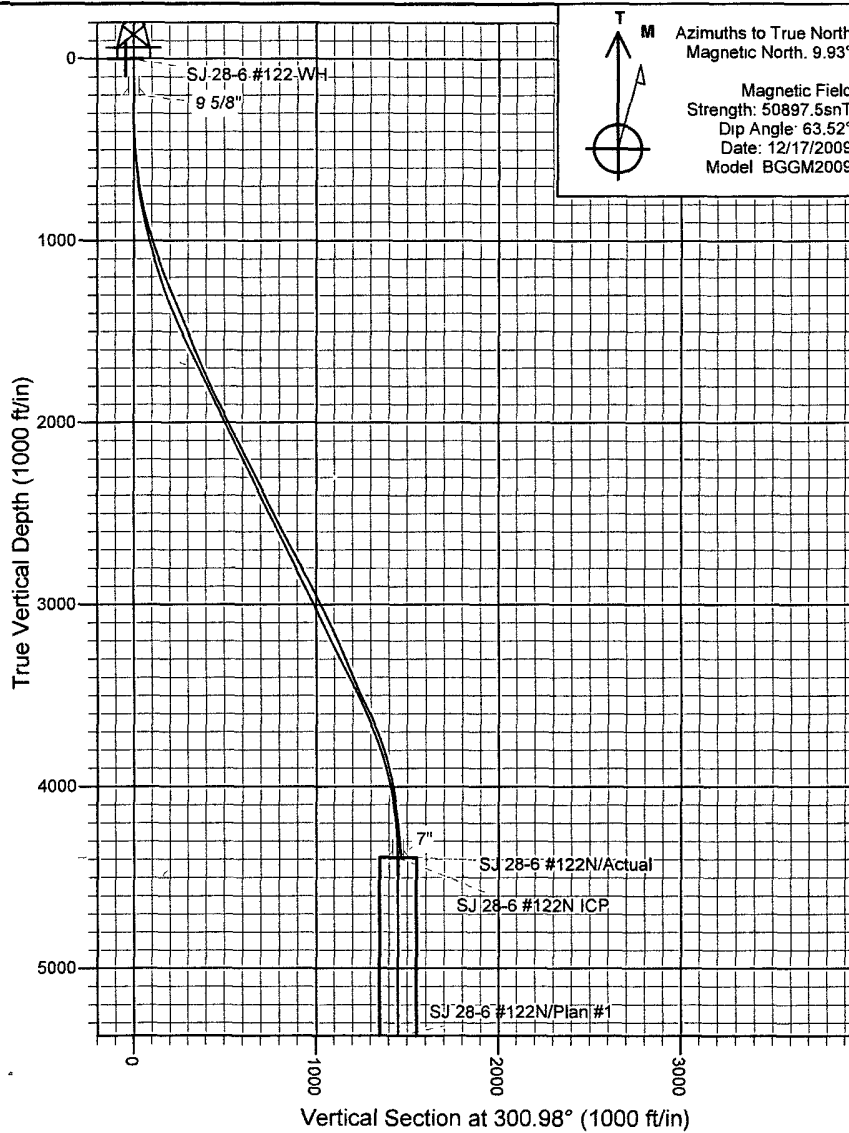
Carrie Reed

Notary Signature
County of Midland
State of Texas





Project: SJB (NM Central)
 Site: SEC 15-T28N-R6W
 Well: SJ 28-6 #122N
 Wellbore: Original Hole
 Design: Plan #1

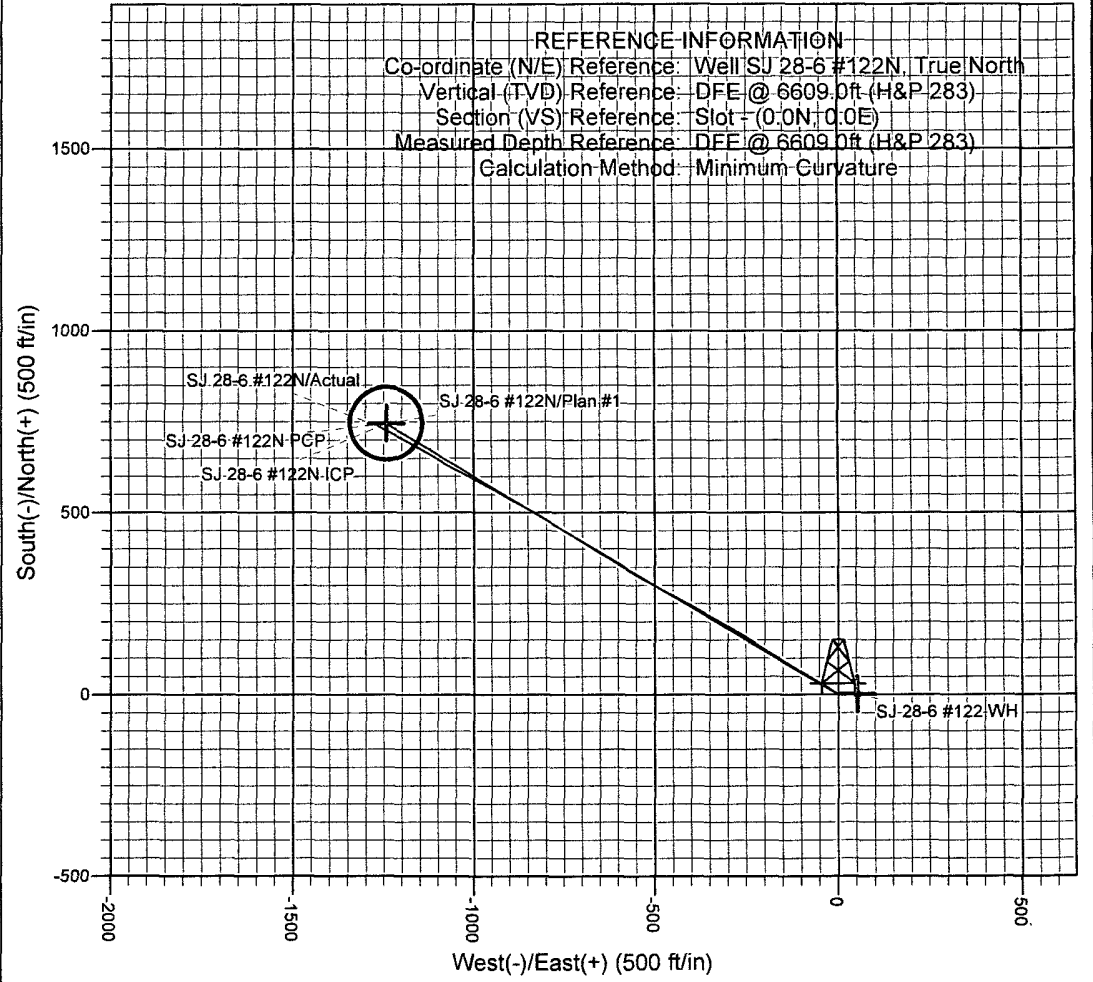


Azimuths to True North
 Magnetic North. 9.93°

Magnetic Field
 Strength: 50897.5nT
 Dip Angle: 63.52°
 Date: 12/17/2009
 Model: BGGM2009

+N/-S	+E/-W	Northing	Easting	Latitude	Longitude	Slot
0.0	0.0	2061061.32	145772.87	36° 39' 29.808 N	107° 27' 27.558 W	

WELL DETAILS: SJ 28-6 #122N
 DFE @ 6609.0ft (H&P 283)
 Ground Level: 6593.0



REFERENCE INFORMATION
 Co-ordinate (N/E) Reference: Well SJ 28-6 #122N, True North
 Vertical (TVD) Reference: DFE @ 6609.0ft (H&P 283)
 Section (VS) Reference: Slot - (0.0N; 0.0E)
 Measured Depth Reference: DFE @ 6609.0ft (H&P 283)
 Calculation Method: Minimum Curvature

COMPANY DETAILS: ConocoPhillips
 Calculation Method: Minimum Curvature
 Error System: ISCWSA
 Scan Method: Closest Approach 3D
 Error Surface: Combined Covariances
 Warning Method: Risk Ratio

PROJECT DETAILS: SJB (NM Central)
 Geodetic System: US State Plane 1927 (Exact solution)
 Datum: NAD 1927 (NADCON CONUS)
 Ellipsoid: Clarke 1866
 Zone: New Mexico Central 3002
 System Datum: Mean Sea Level

SITE DETAILS: SEC 15-T28N-R6W
 Rio Arriba County NM
 Site Centre Latitude: 36° 39' 29.808 N
 Longitude: 107° 27' 27.558 W
 Positional Uncertainty: 0.0
 Convergence: -0.72
 Local North: True

Scientific Drilling International, Inc.

Survey Report

Company: ConocoPhillips	Local Co-ordinate Reference: Site SEC 15-T28N-R6W
Project: SJB (NM Central)	TVD Reference: DFE @ 6609.0ft (H&P 283)
Site: SEC 15-T28N-R6W	MD Reference: DFE @ 6609.0ft (H&P 283)
Well: SJ 28-6 #122N	North Reference: True
Wellbore: Original Hole	Survey Calculation Method: Minimum Curvature
Design: Original Hole	Database: edmCOP

Project SJB (NM Central), New Mexico, S-Type MV/DK Wells			
Map System: US State Plane 1927 (Exact solution)	System Datum: Mean Sea Level		
Geo Datum: NAD 1927 (NADCON CONUS)	Using Well Reference Point		
Map Zone: New Mexico Central 3002	Using geodetic scale factor		

Site SEC 15-T28N-R6W			
Site Position:	Northing: 2,061,061.32 ft	Latitude: 36° 39' 29.808 N	
From: Lat/Long	Easting: 145,772.87 ft	Longitude: 107° 27' 27.558 W	
Position Uncertainty: 0.0 ft	Slot Radius: 6-1/8"	Grid Convergence: -0.72 °	

Well SJ 28-6 #122N, S-Type MV/DK Well			
Well Position	+N/-S 0.0 ft	Northing: 2,061,061.32 ft	Latitude: 36° 39' 29.808 N
	+E/-W 0.0 ft	Easting: 145,772.87 ft	Longitude: 107° 27' 27.558 W
Position Uncertainty	3.5 ft	Wellhead Elevation: ft	Ground Level: 6,593.0 ft

Wellbore Original Hole					
Magnetics	Model Name	Sample Date	Declination	Dip Angle	Field Strength
	BGGM2009	12/17/2009	(°) 9.93	(°) 63.52	(nT) 50,898

Design Original Hole				
Audit Notes:				
Version: 1.0	Phase: ACTUAL	Tie On Depth: 0.0		
Vertical Section:	Depth From (TVD)	+N/-S	+E/-W	Direction
	(ft)	(ft)	(ft)	(°)
	0.0	0.0	0.0	300.26

Survey Program		Date 2/17/2010		
From	To	Survey (Wellbore)	Tool Name	Description
240.0	4,681.0	Actual (Original Hole)	MWD SDI	MWD - Standard ver 1.0.1

Measured Depth (ft)	Inclination (°)	Azimuth (°)	Vertical Depth (ft)	+N/-S (ft)	+E/-W (ft)	Vertical Section (ft)	Dogleg Rate (°/100ft)	Build Rate (°/100ft)	Turn Rate (°/100ft)
0.0	0.00	0.00	0.0	0.0	0.0	0.0	0.00	0.00	0.00
240.0	0.24	249.12	240.0	-0.2	-0.5	0.3	0.10	0.10	0.00
271.0	0.81	305.16	271.0	-0.1	-0.7	0.6	2.27	1.84	180.77
301.0	0.59	326.98	301.0	0.2	-1.0	0.9	1.14	-0.73	72.73
332.0	1.18	321.41	332.0	0.6	-1.3	1.4	1.92	1.90	-17.97
363.0	1.92	297.81	363.0	1.1	-1.9	2.2	3.10	2.39	-76.13
393.0	2.55	302.51	393.0	1.6	-2.9	3.3	2.19	2.10	15.67
424.0	3.30	306.65	423.9	2.5	-4.2	4.9	2.51	2.42	13.35
455.0	3.60	305.09	454.9	3.6	-5.7	6.8	1.01	0.97	-5.03
485.0	4.16	302.70	484.8	4.8	-7.4	8.8	1.94	1.87	-7.97
515.0	4.69	305.15	514.7	6.1	-9.3	11.1	1.88	1.77	8.17
545.0	5.23	306.91	544.6	7.6	-11.4	13.7	1.87	1.80	5.87
576.0	5.93	307.58	575.4	9.4	-13.8	16.7	2.27	2.26	2.16

Scientific Drilling International, Inc.

Survey Report

Company:	ConocoPhillips	Local Co-ordinate Reference:	Site SEC 15-T28N-R6W
Project:	SJB (NM Central)	TVD Reference:	DFE @ 6609.0ft (H&P 283)
Site:	SEC 15-T28N-R6W	MD Reference:	DFE @ 6609.0ft (H&P 283)
Well:	SJ 28-6 #122N	North Reference:	True
Wellbore:	Original Hole	Survey Calculation Method:	Minimum Curvature
Design:	Original Hole	Database:	edmCOP

Survey											
Measured Depth (ft)	Inclination (°)	Azimuth (°)	Vertical Depth (ft)	+N-S (ft)	+E-W (ft)	Vertical Section (ft)	Dogleg Rate (°/100ft)	Build Rate (°/100ft)	Turn Rate (°/100ft)		
607.0	6.85	304.91	606.3	11.4	-16.6	20.1	3.12	2.97	-8.61		
638.0	7.53	304.71	637.0	13.7	-19.8	24.0	2.20	2.19	-0.65		
669.0	8.37	302.92	667.7	16.0	-23.4	28.3	2.82	2.71	-5.77		
699.0	9.12	302.65	697.4	18.5	-27.2	32.8	2.50	2.50	-0.90		
729.0	9.94	302.69	726.9	21.2	-31.4	37.8	2.73	2.73	0.13		
759.0	10.74	301.88	756.5	24.1	-35.9	43.2	2.71	2.67	-2.70		
789.0	11.27	300.34	785.9	27.0	-40.8	48.9	2.02	1.77	-5.13		
837.0	12.72	302.27	832.9	32.2	-49.4	58.9	3.13	3.02	4.02		
882.0	13.73	301.20	876.7	37.6	-58.1	69.2	2.31	2.24	-2.38		
927.0	14.89	300.76	920.3	43.4	-67.6	80.3	2.59	2.58	-0.98		
972.0	16.08	301.00	963.6	49.5	-78.0	92.3	2.65	2.64	0.53		
1,017.0	17.24	302.38	1,006.7	56.3	-88.9	105.2	2.72	2.58	3.07		
1,062.0	17.95	301.24	1,049.6	63.5	-100.5	118.8	1.75	1.58	-2.53		
1,107.0	19.48	300.74	1,092.3	70.9	-112.9	133.2	3.42	3.40	-1.11		
1,152.0	20.49	301.49	1,134.5	78.9	-126.0	148.6	2.32	2.24	1.67		
1,197.0	21.67	300.91	1,176.5	87.2	-139.9	164.8	2.66	2.62	-1.29		
1,242.0	22.49	301.59	1,218.2	96.0	-154.3	181.7	1.91	1.82	1.51		
1,287.0	22.36	301.48	1,259.8	105.0	-169.0	198.9	0.30	-0.29	-0.24		
1,332.0	22.80	301.91	1,301.4	114.1	-183.7	216.1	1.04	0.98	0.96		
1,377.0	22.43	302.63	1,342.9	123.3	-198.3	233.4	1.03	-0.82	1.60		
1,422.0	22.79	303.31	1,384.5	132.7	-212.8	250.7	0.99	0.80	1.51		
1,467.0	22.93	303.96	1,425.9	142.4	-227.4	268.2	0.64	0.31	1.44		
1,512.0	23.02	302.87	1,467.4	152.1	-242.0	285.7	0.97	0.20	-2.42		
1,557.0	22.05	301.59	1,508.9	161.3	-256.6	302.9	2.42	-2.16	-2.84		
1,602.0	22.71	301.06	1,550.5	170.2	-271.3	320.1	1.53	1.47	-1.18		
1,647.0	21.91	300.31	1,592.2	178.9	-285.9	337.1	1.89	-1.78	-1.67		
1,692.0	22.10	299.15	1,633.9	187.3	-300.6	354.0	1.05	0.42	-2.58		
1,737.0	22.77	299.63	1,675.5	195.7	-315.5	371.2	1.54	1.49	1.07		
1,782.0	23.37	299.93	1,716.9	204.5	-330.9	388.8	1.36	1.33	0.67		
1,827.0	24.34	300.54	1,758.0	213.6	-346.6	407.0	2.22	2.16	1.36		
1,872.0	25.41	300.30	1,798.9	223.2	-362.9	425.9	2.39	2.38	-0.53		
1,917.0	26.25	299.88	1,839.4	233.0	-379.9	445.5	1.91	1.87	-0.93		
2,007.0	26.17	298.61	1,920.1	252.4	-414.5	485.3	0.63	-0.09	-1.41		
2,097.0	25.99	298.86	2,000.9	271.5	-449.2	524.8	0.23	-0.20	0.28		
2,142.0	26.18	299.14	2,041.4	281.1	-466.5	544.6	0.50	0.42	0.62		
2,187.0	26.60	299.34	2,081.7	290.8	-484.0	564.6	0.95	0.93	0.44		
2,232.0	26.14	298.69	2,122.0	300.5	-501.5	584.6	1.21	-1.02	-1.44		
2,322.0	26.43	300.97	2,202.7	320.4	-536.0	624.4	1.17	0.32	2.53		
2,412.0	26.35	299.90	2,283.3	340.6	-570.5	664.4	0.54	-0.09	-1.19		
2,502.0	26.10	301.43	2,364.0	360.9	-604.7	704.2	0.80	-0.28	1.70		
2,592.0	25.97	300.38	2,444.9	381.2	-638.6	743.7	0.53	-0.14	-1.17		
2,682.0	25.52	302.29	2,526.0	401.5	-672.0	782.8	1.05	-0.50	2.12		
2,772.0	26.60	302.21	2,606.8	422.6	-705.5	822.3	1.20	1.20	-0.09		
2,862.0	27.40	301.84	2,687.0	444.3	-740.1	863.1	0.91	0.89	-0.41		
2,951.0	27.96	301.51	2,765.8	466.0	-775.3	904.5	0.65	0.63	-0.37		
3,041.0	27.56	300.51	2,845.5	487.6	-811.2	946.4	0.68	-0.44	-1.11		
3,131.0	27.47	300.01	2,925.3	508.5	-847.1	988.0	0.28	-0.10	-0.56		
3,221.0	27.07	298.57	3,005.3	528.7	-883.1	1,029.2	0.86	-0.44	-1.60		
3,311.0	25.27	300.53	3,086.1	548.3	-917.6	1,068.9	2.22	-2.00	2.18		
3,401.0	23.94	298.77	3,167.9	566.8	-950.2	1,106.3	1.69	-1.48	-1.96		
3,491.0	22.65	297.58	3,250.6	583.6	-981.5	1,141.9	1.53	-1.43	-1.32		
3,581.0	22.63	296.74	3,333.6	599.4	-1,012.4	1,176.5	0.36	-0.02	-0.93		
3,626.0	22.01	296.61	3,375.2	607.1	-1,027.6	1,193.6	1.38	-1.38	-0.29		
3,671.0	22.26	297.12	3,416.9	614.8	-1,042.8	1,210.5	0.70	0.56	1.13		

Scientific Drilling International, Inc.

Survey Report

Company:	ConocoPhillips	Local Co-ordinate Reference:	Site SEC 15-T28N-R6W
Project:	SJB (NM Central)	TVD Reference:	DFE @ 6609.0ft (H&P 283)
Site:	SEC 15-T28N-R6W	MD Reference:	DFE @ 6609 0ft (H&P 283)
Well:	SJ 28-6 #122N	North Reference:	True
Wellbore:	Original Hole	Survey Calculation Method:	Minimum Curvature
Design:	Original Hole	Database:	edmCOP

Survey										
Measured Depth (ft)	Inclination (°)	Azimuth (°)	Vertical Depth (ft)	+N/-S (ft)	+E/-W (ft)	Vertical Section (ft)	Dogleg Rate (°/100ft)	Build Rate (°/100ft)	Turn Rate (°/100ft)	
3,716.0	23.32	298.81	3,458.4	622.9	-1,058.2	1,227.9	2.77	2.36	3.76	
3,761.0	24.76	300.12	3,499.5	632.0	-1,074.1	1,246.2	3.41	3.20	2.91	
3,806.0	25.85	300.74	3,540.2	641.7	-1,090.7	1,265.5	2.49	2.42	1.38	
3,851.0	25.84	300.60	3,580.7	651.7	-1,107.6	1,285.1	0.14	-0.02	-0.31	
3,896.0	24.83	300.09	3,621.4	661.4	-1,124.2	1,304.3	2.30	-2.24	-1.13	
3,941.0	22.84	299.56	3,662.5	670.5	-1,140.0	1,322.5	4.45	-4.42	-1.18	
3,986.0	21.41	299.28	3,704.2	678.8	-1,154.7	1,339.5	3.19	-3.18	-0.62	
4,031.0	19.37	299.70	3,746.4	686.5	-1,168.4	1,355.1	4.54	-4.53	0.93	
4,076.0	17.61	298.15	3,789.1	693.4	-1,180.9	1,369.4	4.06	-3.91	-3.44	
4,121.0	16.70	298.77	3,832.1	699.8	-1,192.5	1,382.7	2.06	-2.02	1.38	
4,166.0	14.47	299.43	3,875.4	705.6	-1,203.1	1,394.8	4.97	-4.96	1.47	
4,211.0	12.59	298.01	3,919.2	710.7	-1,212.3	1,405.3	4.24	-4.18	-3.16	
4,256.0	11.66	298.67	3,963.2	715.2	-1,220.6	1,414.7	2.09	-2.07	1.47	
4,301.0	10.13	297.32	4,007.3	719.2	-1,228.1	1,423.2	3.45	-3.40	-3.00	
4,346.0	8.62	297.44	4,051.7	722.6	-1,234.6	1,430.5	3.36	-3.36	0.27	
4,391.0	7.68	294.90	4,096.3	725.4	-1,240.4	1,436.9	2.24	-2.09	-5.64	
4,436.0	7.11	299.26	4,140.9	728.0	-1,245.5	1,442.7	1.78	-1.27	9.69	
4,481.0	6.46	298.47	4,185.6	730.6	-1,250.2	1,448.0	1.46	-1.44	-1.76	
4,526.0	5.77	296.62	4,230.3	732.8	-1,254.4	1,452.8	1.59	-1.53	-4.11	
4,571.0	4.60	299.48	4,275.2	734.7	-1,258.0	1,456.8	2.66	-2.60	6.36	
4,616.0	4.11	299.55	4,320.0	736.4	-1,261.0	1,460.3	1.09	-1.09	0.16	
4,661.0	3.96	290.27	4,364.9	737.7	-1,263.9	1,463.4	1.49	-0.33	-20.62	
4,681.0	3.66	287.81	4,384.9	738.2	-1,265.1	1,464.7	1.71	-1.50	-12.30	