

District I
1625 N. French Dr., Hobbs, NM 88240
District II
1301 W. Grand Avenue, Artesia, NM 88210
District III
1000 Rio Brazos Road, Aztec, NM 87410
District IV
1220 S. St. Francis Dr., Santa Fe, NM 87505

State of New Mexico
Energy Minerals and Natural Resources
Department
Oil Conservation Division
1220 South St. Francis Dr.
Santa Fe, NM 87505

Form C-144 CLEZ
July 21, 2008

For closed-loop systems that only use above ground steel tanks or haul-off bins and propose to implement waste removal for closure, submit to the appropriate NMOCD District Office.

5996

Closed-Loop System Permit or Closure Plan Application

(that only use above ground steel tanks or haul-off bins and propose to implement waste removal for closure)

Type of action: ☒ Permit ☐ Closure

Instructions: Please submit one application (Form C-144 CLEZ) per individual closed-loop system request. For any application request other than for a closed-loop system that only use above ground steel tanks or haul-off bins and propose to implement waste removal for closure, please submit a Form C-144.

Please be advised that approval of this request does not relieve the operator of liability should operations result in pollution of surface water, ground water or the environment. Nor does approval relieve the operator of its responsibility to comply with any other applicable governmental authority's rules, regulations or ordinances.

1. Operator: Huntington Energy, L.L.C. OGRID #: 208706

Address: 908 N.W. 71st St., Oklahoma City, OK 73116

Facility or well name: Ute Mountain Ute #102

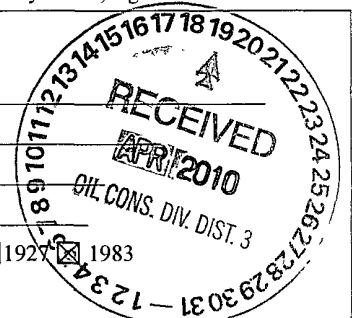
API Number: 30-045-35055

OCD Permit Number: _____

U/L or Qtr/Qtr NWSW Section 16 Township 32N Range 14W County: San Juan Co.

Center of Proposed Design: Latitude 36.98648° N Longitude 108.31937° W NAD: ☐ 1927 ☒ 1983

Surface Owner: ☐ Federal ☐ State ☐ Private ☒ Tribal Trust or Indian Allotment



2. ☒ **Closed-loop System:** Subsection H of 19.15.17.11 NMAC

Operation: ☒ Drilling a new well ☐ Workover or Drilling (Applies to activities which require prior approval of a permit or notice of intent) ☐ P&A

☐ Above Ground Steel Tanks or ☒ Haul-off Bins

3. **Signs:** Subsection C of 19.15.17.11 NMAC

☐ 12"x 24", 2" lettering, providing Operator's name, site location, and emergency telephone numbers

☒ Signed in compliance with 19.15.3.103 NMAC

4. **Closed-loop Systems Permit Application Attachment Checklist:** Subsection B of 19.15.17.9 NMAC

Instructions: Each of the following items must be attached to the application. Please indicate, by a check mark in the box, that the documents are attached.

☒ Design Plan - based upon the appropriate requirements of 19.15.17.11 NMAC

☒ Operating and Maintenance Plan - based upon the appropriate requirements of 19.15.17.12 NMAC

☒ Closure Plan (Please complete Box 5) - based upon the appropriate requirements of Subsection C of 19.15.17.9 NMAC and 19.15.17.13 NMAC

☐ Previously Approved Design (attach copy of design) API Number: _____

☐ Previously Approved Operating and Maintenance Plan API Number: _____

5. **Waste Removal Closure For Closed-loop Systems That Utilize Above Ground Steel Tanks or Haul-off Bins Only:** (19.15.17.13.D NMAC)

Instructions: Please identify the facility or facilities for the disposal of liquids, drilling fluids and drill cuttings. Use attachment if more than two facilities are required.

Disposal Facility Name: IEI Disposal Facility Permit Number: 010010B

Disposal Facility Name: _____ Disposal Facility Permit Number: _____

Will any of the proposed closed-loop system operations and associated activities occur on or in areas that will not be used for future service and operations?

☐ Yes (If yes, please provide the information below) ☒ No

Required for impacted areas which will not be used for future service and operations:

☐ Soil Backfill and Cover Design Specifications - based upon the appropriate requirements of Subsection H of 19.15.17.13 NMAC

☐ Re-vegetation Plan - based upon the appropriate requirements of Subsection I of 19.15.17.13 NMAC

☐ Site Reclamation Plan - based upon the appropriate requirements of Subsection G of 19.15.17.13 NMAC

6. **Operator Application Certification:**

I hereby certify that the information submitted with this application is true, accurate and complete to the best of my knowledge and belief.

Name (Print): Catherine Smith Title: Regulatory

Signature: Catherine Smith Date: 4/14/10

e-mail address: csmith@huntingtonenergy.com Telephone: (405) 840-9876

7. **OCD Approval:** ☒ Permit Application (including closure plan) ☐ Closure Plan (only)

OCD Representative Signature: B. A. Pell Approval Date: 6/2/10

Title: EnviroSpec OCD Permit Number: _____

8. **Closure Report (required within 60 days of closure completion):** Subsection K of 19.15.17.13 NMAC

Instructions: Operators are required to obtain an approved closure plan prior to implementing any closure activities and submitting the closure report. The closure report is required to be submitted to the division within 60 days of the completion of the closure activities. Please do not complete this section of the form until an approved closure plan has been obtained and the closure activities have been completed.

☐ Closure Completion Date: _____

9. **Closure Report Regarding Waste Removal Closure For Closed-loop Systems That Utilize Above Ground Steel Tanks or Haul-off Bins Only:**

Instructions: Please identify the facility or facilities for where the liquids, drilling fluids and drill cuttings were disposed. Use attachment if more than two facilities were utilized.

Disposal Facility Name: _____ Disposal Facility Permit Number: _____

Disposal Facility Name: _____ Disposal Facility Permit Number: _____

Were the closed-loop system operations and associated activities performed on or in areas that *will not* be used for future service and operations?

☐ Yes (If yes, please demonstrate compliance to the items below) ☐ No

Required for impacted areas which will not be used for future service and operations:

☐ Site Reclamation (Photo Documentation)

☐ Soil Backfilling and Cover Installation

☐ Re-vegetation Application Rates and Seeding Technique

10. **Operator Closure Certification:**

I hereby certify that the information and attachments submitted with this closure report is true, accurate and complete to the best of my knowledge and belief. I also certify that the closure complies with all applicable closure requirements and conditions specified in the approved closure plan.

Name (Print): _____ Title: _____

Signature: _____ Date: _____

e-mail address: _____ Telephone: _____

UMU 102 CLOSED LOOP DESIGN PLAN

The Closed Loop System will include an above ground tank subtable for holding cuttings and liquids for rig operations. The tank will be of sufficient volume to maintain a safe free board between disposal of liquids and cuttings from operations. Our system will not use a drying pad, temporary pit, below-grade tank, or sump. No fencing is required.

Equipment List:

- 1 – 600 gal per minute, three screen, shale shaker
 - 1 – 200 bbl, three compartment
 - 1 – 90 bbl, cutting tank
 - 1 – frac tank for fresh water
 - 1 – Centrifical pump for mixing and move any fluid from cutting tank back across shaker
- Sign in compliance with 19.15.3.103 NMAC

UMU #102 Closed-Loop Operating and Maintenance Plan

1. Liquids will be vacuumed out and disposed of at IEI (#NM-010010B) Solids in the closed-loop tank will be vacuumed out and disposed of at IEI (Permit # 010010B) on a scheduled basis to prevent over topping.
2. Closed Loop equipment will be inspected daily, by each tour and any necessary maintenance performed. The Division District Office will be notified within 48 hrs of any leak at the closed loop tank. Repairs will occur immediately.

UMU #102 Closed-Loop Closure Plan

The closed loop tank will be closed in accordance with 19.15.17.13. Cuttings and all remaining sludge will be transported to Industrial Eco Systems, Inc. (Permit # 010010B). All remaining fluids will be hauled and disposed to IEI. The tanks will be removed from the location as part of the rig move. At time of well abandonment, the site will be reclaimed and re-vegetated to pre-existing conditions as provided by 19.15.17.B NMAC.



New Mexico Office of the State Engineer

Wells with Well Log Information

No wells found.

Basin/County Search:

Basin: San Juan

County: San Juan

Subbasin: La Plata

PLSS Search:

Township: 32N

Range: 14W

data is furnished by the NMOSE/ISC and is accepted by the recipient with the expressed understanding that the OSE/ISC make no warranties, expressed or implied, concerning the accuracy, completeness, reliability, usability, or suitability for any particular purpose of the data.

5/09 1:31 PM

Page 1 of 1

WELLS WITH WELL LOG INFORMATION



New Mexico Office of the State Engineer

Point of Diversion by Location

(with Owner Information)

No PODs found.

POD Search:

POD Basin: San Juan

Basin/County Search:

Basin: San Juan

County: San Juan

Subbasin: La Plata

PLSS Search:

Township: 32N

Range: 14W

data is furnished by the NMOSE/ISC and is accepted by the recipient with the expressed understanding that the OSE/ISC make no warranties, expressed or implied, concerning the accuracy, completeness, ability, usability, or suitability for any particular purpose of the data.

5/09 1:34 PM

Page 1 of 1

POINT OF DIVERSION BY LOCATION



New Mexico Office of the State Engineer **Water Column/Average Depth to Water**

No records found.

Basin/County Search:

Basin: San Juan

County: San Juan

Subbasin: La Plata

PLSS Search:

Township: 32N

Range: 14W

DISTRICT I
P.O. Box 1980, Hobbs, N.M. 88241-1980

DISTRICT II
1301 W Grand Avenue, Artesia, NM 88210

DISTRICT III
1000 Rio Brazos Rd., Aztec, N.M. 87410

DISTRICT IV
1220 South St Francis Dr., Santa Fe, NM 87505

State of New Mexico
Energy, Minerals & Natural Resources Department

OIL CONSERVATION DIVISION

1220 South St. Francis Dr
Santa Fe, NM 87504-2088

RECEIVED

JUL 10 2009

Bureau of Land Management
Durango Colorado

Form C-102
Revised October 12, 2005
Instructions on back
Submit to Appropriate District Office
State Lease - 4 Copies
Fee Lease - 3 Copies

RECOMMENDED REPORT

WELL LOCATION AND ACREAGE DEDICATION PLAT

¹ API Number	² Pool Code 71520	³ Pool Name BARKER CREEK - DAKOTA
⁴ Property Code 18725	⁵ Property Name UTE MOUNTAIN UTE	⁶ Well Number 102
⁷ GRID No 14538	⁸ Operator Name BURLINGTON RESOURCES OIL & GAS COMPANY LP	⁹ Elevation 6383'

¹⁰ Surface Location

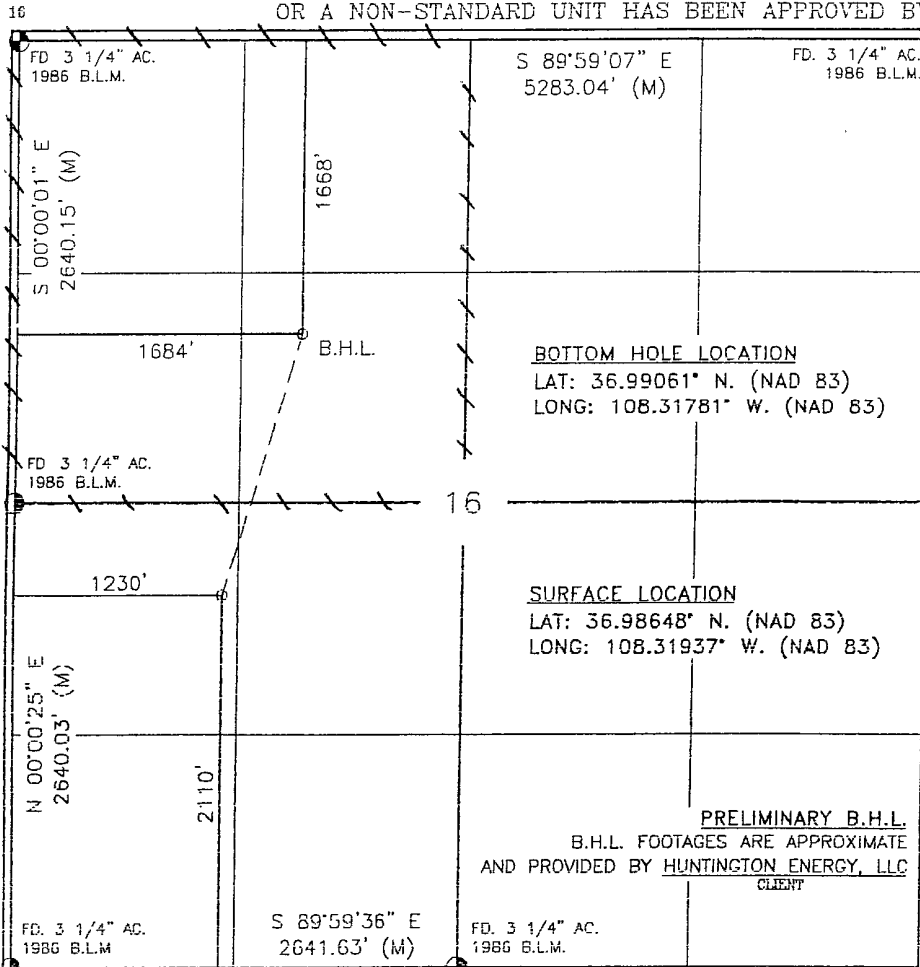
UL or lot no.	Section	Township	Range	Lot Idn	Feet from the	North/South line	Feet from the	East/West line	County
L	16	32-N	14-W		2110	SOUTH	1230	WEST	SAN JUAN

¹¹ Bottom Hole Location If Different From Surface

UL or lot no.	Section	Township	Range	Lot Idn	Feet from the	North/South line	Feet from the	East/West line	County
F	16	32-N	14-W		1668	NORTH	1684	WEST	SAN JUAN

¹² Dedicated Acres W - 160	¹³ Joint or Infill	¹⁴ Consolidation Code	¹⁵ Order No
--	-------------------------------	----------------------------------	------------------------

NO ALLOWABLE WILL BE ASSIGNED TO THIS COMPLETION UNTIL ALL INTERESTS HAVE BEEN CONSOLIDATED
OR A NON-STANDARD UNIT HAS BEEN APPROVED BY THE DIVISION



17 OPERATOR CERTIFICATION

I hereby certify that the information contained herein is true and complete to the best of my knowledge and belief, and that this organization either owns a working interest or unleased mineral interest in the land including the proposed bottom hole location or has a right to drill this well at this location pursuant to a contract with an owner of such a mineral or working interest, or to a voluntary pooling agreement or a compulsory pooling order heretofore entered by the division.

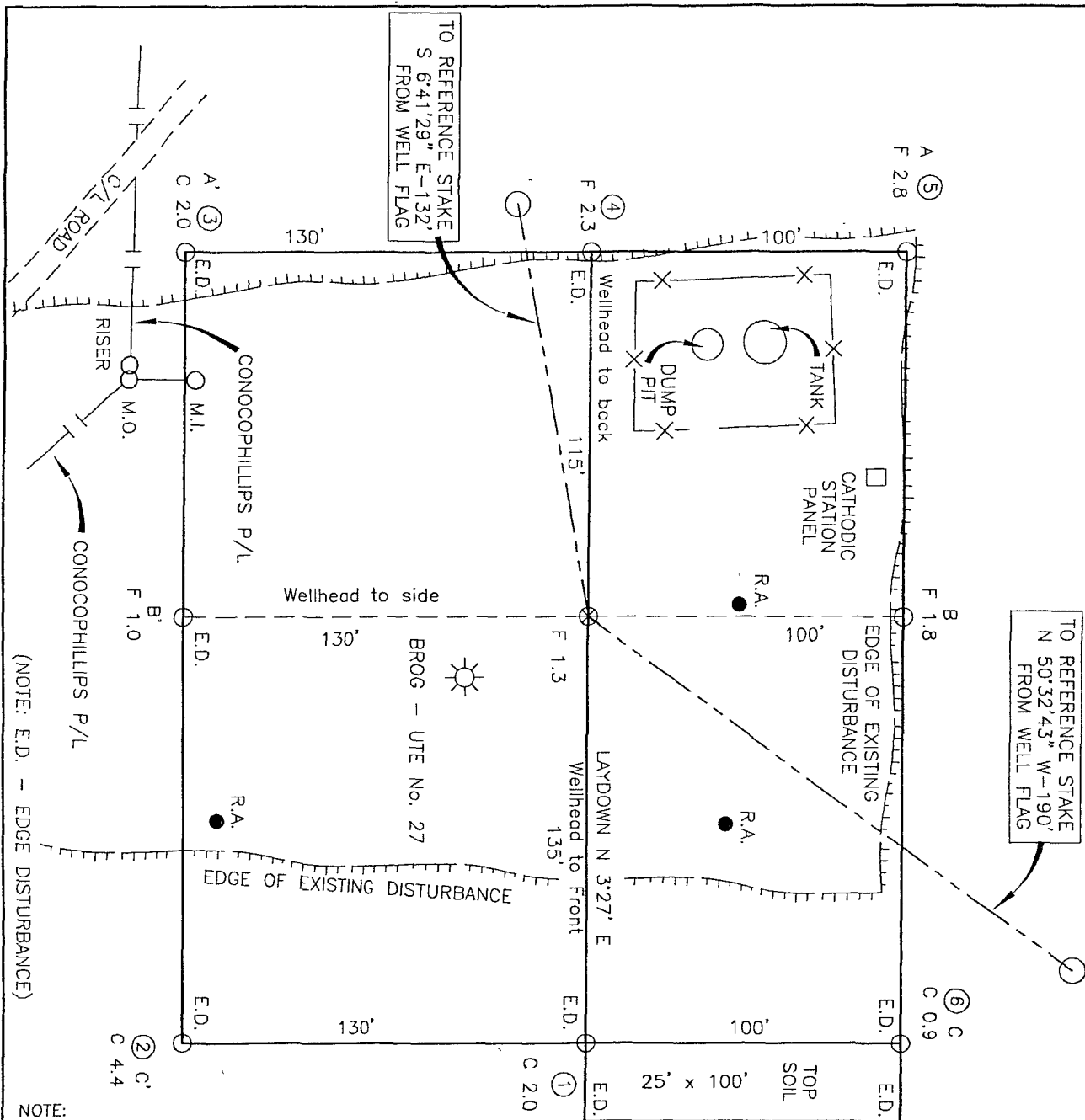
Catherine Smith 7-9-09
Signature Date
Catherine Smith
Printed Name

18 SURVEYOR CERTIFICATION

I hereby certify that the well location shown on this plat was plotted from field notes of actual surveys made by me or under my supervision, and that the same is true and correct to the best of my knowledge and belief.

FEBRUARY 27 2009
Date of Survey
Signature and Seal of Professional Surveyor:
ROY A. RUSSELL
NEW MEXICO
REGISTERED PROFESSIONAL LAND SURVEYOR
8894
Certificate Number

BURLINGTON RESOURCES OIL & GAS COMPANY LP
UTE MOUNTAIN UTE No. 102, 2110 FSL 1230 FWL
 SECTION 16, T-32-N, R-14-W, N.M.P.M., SAN JUAN COUNTY, NEW MEXICO
 GROUND ELEVATION: 6383'
 DATE: FEBRUARY 27, 2009



NOTE:
 DAGGETT ENTERPRISES, INC. IS NOT LIABLE FOR UNDERGROUND
 UTILITIES OR PIPELINES. CONTRACTOR SHOULD CALL NEW MEXICO
 ONE CALL CENTER TO NOTIFY 48 HOURS PRIOR TO EXCAVATION
 OR CONSTRUCTION.

REVISION:	DATE:	REVISED BY:
REMOVED RESERVE PIT/C.O.P. &	04/17/09	G.V.
REMOVED SPOIL STORAGE AREA		
ROTATED PIT	03/25/09	G.V.
ADD ACCESS/REMOVE NAD 27	03/24/09	G.V.
LOCATION RESTAKE	03/05/09	G.V.
PER BIA ONSITE	11/11/08	B.K.
PER BLM ONSITE	10/14/08	B.K.
CHANGE PAD DIMENSIONS	09/18/08	B.K.
ADD (SPOIL/TOP SOIL)	08/28/08	B.K.
ADD C.O.P.	07/11/08	B.K.

Daggett Enterprises, Inc.
 Surveying and Oil Field Services
 P. O. Box 510 • Farmington, NM 87499
 Phone (505) 326-1772 • Fax (505) 326-6019
 NEW MEXICO L.S. No. 8894

WELL FLAG
 NAD 83
 LAT. = 36.98648° N.
 LONG. = 108.31937° W.

REVISION:
 DRAWN BY: B.K.
 ROW#: HTG085

DATE:
 CADFILE: HTG085_PL8
 DATE: 06/04/08

