

**UNITED STATES
DEPARTMENT OF THE INTERIOR
BUREAU OF LAND MANAGEMENT**

RECEIVED

JUN 01 2010

Sundry Notices and Reports on Wells

Bureau of Land Management
Farmington Field Office1. Type of Well
GAS5. Lease Number
SF - 078174-A6. If Indian, All. or
Tribe Name

7. Unit Agreement Name

2. Name of Operator

BURLINGTON

RESOURCES OIL & GAS COMPANY LP

3. Address & Phone No. of Operator

PO Box 4289, Farmington, NM 87499 (505) 326-9700

8. Well Name & Number
Aztec Federal 1M

9. API Well No.

30-045-31109

4. Location of Well, Footage, Sec., T, R, M

Surf: Unit B (NWNE), 700' FNL & 2225' FEL, Section 24, T30N, R11W, NMPM

10. Field and Pool

Otero Chacra/Blanco MV/Basin DK

11. County and State
San Juan Co., NM

12. CHECK APPROPRIATE BOX TO INDICATE NATURE OF NOTICE, REPORT, OTHER DATA

Type of Submission

☒ Notice of Intent☐ Subsequent Report☐ Final Abandonment

Type of Action

☒ Abandonment☐ Recompletion☐ Plugging☐ Casing Repair☐ Altering Casing☐ Change of Plans☐ New Construction☐ Non-Routine Fracturing☐ Water Shut off☐ Conversion to Injection☒ Other - Abandonment

RCVD JUN 7 '10

OIL CONS. DIV.

DIST. 3

13. Describe Proposed or Completed Operations

Burlington Resources wishes to P&A this well per the attached procedures and well bore schematics.

14. I hereby certify that the foregoing is true and correct.

Signed

Jamie Goodwin

Jamie Goodwin Title

Regulatory Technician

Date

6/1/10

(This space for Federal or State Office use)

APPROVED BY Original Signed: Stephen Mason Title

Date

JUN 04 2010

CONDITION OF APPROVAL, if any:

Title 18 U.S.C. Section 1001, makes it a crime for any person knowingly and willfully to make any department or agency of the United States any false, fictitious or fraudulent statements or representations as to any matter within its jurisdiction.

Notify NMOCD 24 hrs
prior to beginning
operations

NMOCD

ABANDONMENT PROCEDURE

April 29, 2010

Aztec Federal #1M (CH/MV/DK)

Otero Chacra/Blanco Mesaverde/Basin Dakota
700' FNL and 2225' FEL, Unit B Section 24, T30N, R11W
San Juan County, New Mexico / API 30-045-31109
Lat: 36° 48' 9.504" N/ Long: 107° 56' 27.384" W

Note: All cement volumes use 100% excess outside pipe and 50' excess inside. The stabilizing wellbore fluid will be 8.3 ppg, sufficient to balance all exposed formation pressures. All cement will be Class B, mixed at 15.6 ppg with a 1.18 cf/sx yield.

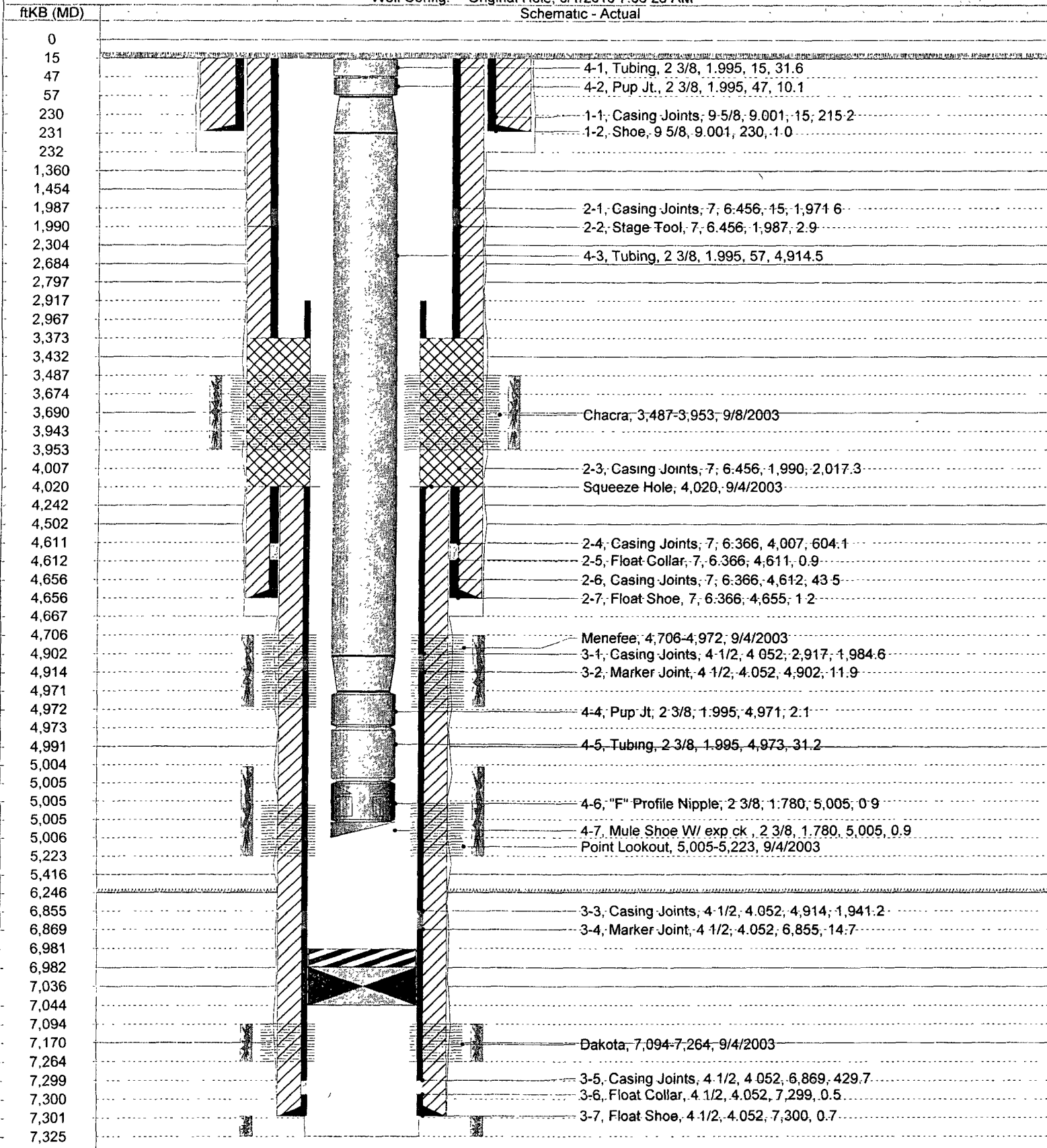
1. This project requires a NMOCD C-144 CLEZ Closed-Loop System Permit for the use of an A-Plus steel tank to handle waste fluids circulated from the well and cement wash up.
2. Install and test location rig anchors. Comply with all NMOCD, BLM, and Operator safety regulations. MOL and RU daylight pulling unit. Conduct safety meeting for all personnel on location. Record casing, tubing and bradenhead pressures. NU relief line and blow down well. Kill well with water as necessary and at least pump tubing capacity of water down the tubing. ND wellhead and NU BOP. Function test BOP.
3. Rods: Yes____, No X, Unknown____.
Tubing: Yes X, No____, Unknown____ Size 2-3/8", Length 5006.3'.
Packer: Yes____, No X, Unknown____ Type____.
If this well has rods or a packer, then modify the work sequence in step #2 as appropriate.
4. **Plug #1 (Gallup top: 6296' – 6196')**: Load casing and circulate well clean. Mix 12 sxs Class B cement and spot a balanced plug inside casing to cover Gallup top. POH.
5. **Plug #2 (Mesaverde perforations and top: 4656' - 4192')**: RIH and set 4 ½" CR at 4656'. Pressure test tubing to 1000 PSI. Mix 40 sxs Class B cement and spot above CR to isolate MV perforations and top. POH.
6. **Plug #3 (Chacra perforations and casing cut off top: 3437' – 2867')**: RIH and set 4 ½" BP at 3437'. Pressure test casing to 800#. *If casing does not test, then spot or tag subsequent plugs as appropriate.* Mix 94 sxs Class B cement and spot above BP to isolate Chacra perforations and casing liner top. PUH.
7. **Plug #4 (PC and FC tops: 2734' – 2254')**: Mix 103 sxs Class B cement and spot above a balanced plug inside casing to cover PC and FC tops. PUH.
8. **Plug #5 (Kirtland and Ojo Alamo tops: 1504' – ~~1340'~~ 1246')**: Mix ~~48~~ sxs Class B cement and spot above a balanced plug inside casing to cover Kirtland and Ojo Alamo tops. PUH.
9. **Plug #6 (9-5/8 casing shoe and surface: 281' - surface)**: Mix 55 sxs Class B cement and spot above a balanced plug inside casing to cover casing shoe to surface.
10. ND BOP and cut off wellhead below surface casing flange. Install P&A marker with cement to comply with regulations. RD, MOL and cut off anchors. Restore location per BLM stipulations.

Most Recent Job

Job Category	Primary Job Type	Secondary Job Type	Actual Start Date	End Date
WELL INTERVENTION	TUBING REPAIR		7/31/2008	8/27/2008

Well Config: - Original Hole, 6/1/2010 7:36:26 AM

Schematic - Actual



**UNITED STATES DEPARTMENT OF THE INTERIOR
BUREAU OF LAND MANAGEMENT
FARMINGTON DISTRICT OFFICE
1235 LA PLATA HIGHWAY
FARMINGTON, NEW MEXICO 87401**

Attachment to notice of
Intention to Abandon:

Re: Permanent Abandonment
Well: 1M Aztec Federal

CONDITIONS OF APPROVAL

1. Plugging operations authorized are subject to the attached "General Requirements for Permanent Abandonment of Wells on Federal and Indian Lease."

2. Farmington Office is to be notified at least 24 hours before the plugging operations commence (505) 599-8907.

3. The following modifications to your plugging program are to be made:

a) Place the Kirtland/Ojo Alamo plug from 1504' – 1246'.

b) You are required to have H2S monitoring equipment and personnel on location during plugging operations.

You are also required to place cement excesses per 4.2 and 4.4 of the attached General Requirements.

Office Hours: 7:45 a.m. to 4:30 p.m.