

**UNITED STATES  
DEPARTMENT OF THE INTERIOR  
BUREAU OF LAND MANAGEMENT**

RECEIVED

JUN 18 2010

## Sundry Notices and Reports on Wells

BUREAU OF LAND MANAGEMENT  
FARMINGTON, NM

1. Type of Well  
GAS

5. Lease Number  
SF-077386A  
6. If Indian, All. or  
Tribe Name  
7. Unit Agreement Name

2. Name of Operator  
**BURLINGTON**  
RESOURCES OIL & GAS COMPANY LP

3. Address & Phone No. of Operator

PO Box 4289, Farmington, NM 87499 (505) 326-9700

8. Well Name & Number  
Johnson 3  
9. API Well No.  
30-045-29203

4. Location of Well, Footage, Sec., T, R, M

Surf: Unit P (SESE), 240' FSL & 340' FEL, Section 21, T29N, R11W, NMPM

10. Field and Pool  
Basin Fruitland Coal  
Otero Chacra/Basin DK  
11. County and State  
San Juan Co., NM

## 12. CHECK APPROPRIATE BOX TO INDICATE NATURE OF NOTICE, REPORT, OTHER DATA

## Type of Submission

☒ X Notice of Intent

☐ Subsequent Report

☐ Final Abandonment

## Type of Action

☒ X Abandonment

☐ Recompletion

☐ Plugging

☐ Casing Repair

☐ Altering Casing

☐ Change of Plans

☐ New Construction

☐ Non-Routine Fracturing

☐ Water Shut off

☐ Conversion to Injection

Other -

RCVD JUN 25 '10

OIL CONS. DIV.

DIST. 2

## 13. Describe Proposed or Completed Operations

Burlington would like to P&A this wellbore per attached procedures and wellbore schematics.

## 14. I hereby certify that the foregoing is true and correct.

Signed Rhonda Rogers Rhonda Rogers Title Staff Regulatory Technician Date 6/18/2010

(This space for Federal or State Office use)

APPROVED BY Original Signed: Stephen Mason Title \_\_\_\_\_ Date JUN 22 2010

CONDITION OF APPROVAL, if any:

Title 18 U.S.C. Section 1001, makes it a crime for any person knowingly and willfully to make any department or agency of the United States any false, fictitious or fraudulent statements or representations as to any matter within its jurisdiction.

**Notify NMOCD 24 hrs  
prior to beginning  
operations**

NMOCD

## ABANDONMENT PROCEDURE

March 9, 2010

### JOHNSON 3 POW (FC)

Basin Fruitland Coal  
240' FSL and 340' FEL, Unit P Section 21, T27N, R10W  
San Juan County, New Mexico / API 30-045-29203  
Lat: 36° 33' 14.328" N/ Long: 107° 53' 33.108" W

Note: All cement volumes use 100% excess outside pipe and 50' excess inside. The stabilizing wellbore fluid will be 8.3 ppg, sufficient to balance all exposed formation pressures. All cement will be Class B, mixed at 15.6 ppg with a 1.18 cf/sx yield.

Note: This project requires a Baker telemetry cable reel and cutting tools for the cable bands.

1. This project requires a NMOCD C-144 CLEZ Closed-Loop System Permit for the use of an A-Plus steel tank to handle waste fluids circulated from the well and cement wash up.
2. Install and test location rig anchors. Comply with all NMOCD, BLM, and Operator safety regulations. MOL and RU daylight pulling unit. Conduct safety meeting for all personnel on location. Record casing, tubing and bradenhead pressures. NU relief line and blow down well. Kill well with water as necessary and at least pump tubing capacity of water down the tubing. ND wellhead and NU BOP. Function test BOP.
3. Rods: Yes       , No X, Unknown       .  
Tubing: Yes X, No       , Unknown        Size 2 3/8, Length 1780'.  
Packer: Yes X, No       , Unknown        Type Model D Wireline set.  
If this well has rods or a packer, then modify the work sequence in step #2 as appropriate.
4. Unseat the tubing from the packer and TOOH with tubing. If unable to pull out of packer, cut tubing and spot cement above tubing stub. **Leave packer in the hole.** Note: There is a telemetry cable banded to each tubing joint. Use cutters to remove the bands. Spool cable on Baker cable spool.
5. **Plug #1 (Fruitland perforations top: 1662'-~~1531'~~<sup>1476'</sup>):** RIH and set 5-1/2" CR at 1662'. Load casing and circulate well clean. Pressure test tubing to 1000 PSI. Pressure test casing to 800#. *If casing does not test, then spot or tag subsequent plugs as appropriate.* Mix ~~24~~ sxs Class B cement and spot above CR to isolate the Fruitland perforations and top. PUH.
6. **Plug #2 (Kirtland top, Ojo Alamo tops: 1074' - ~~833'~~<sup>782'</sup>):** Mix ~~28~~ sxs Class B cement and spot a balanced plug inside casing to cover Kirtland and Ojo Alamo tops. PUH.
7. **Plug #3 (8-5/8" casing shoe and surface: 291' - surface):** Attempt to pressure test the bradenhead annulus to 300 PSI; note the volume to load. If the BH annulus holds pressure, then establish circulation out casing valve with water. Mix approximately 33 sxs Class B cement and spot a balanced plug from 291' to surface, circulate good cement out casing valve. TOH and LD tubing. Shut well in and WOC. If the BH annulus does not test, then perforate at the appropriate depth and attempt to circulate cement to surface filling the casing from 291' and the annulus from the squeeze holes to surface. Shut in well and WOC.
8. ND BOP and cut off wellhead below surface casing flange. Install P&A marker with cement to comply with regulations. RD, MOL and cut off anchors. Restore location per BLM stipulations.

# Current Schematic

ConocoPhillips

Well Name: JOHNSON #3 POW

API/UVI	Surface Legal Location	Field Name	License No	State/Province	Well Configuration Type	Edit
3004529203	NMPM-021-027N-010VV	FIDRR KTZ PO33A	HCZ15	NEW MEXICO		
Ground Elevation (ft)	Original KB/RT Elevation (ft)	KB-Grout Distance (ft)	KB-Casing Flange Distance (ft)	KB-Tubing Hanger Distance (ft)		
6,110.00	6,122.00	12.00	6,122.00	6,122.00		

Well Config: - Original Hole, 6/11/2010 8:32:35 AM

ftKB (MD)	Frm Final	Schematic - Actual
12		TUBING, 2 3/8in, 4.70lbs/ft, J-55, 12 ftKB, 44 ftKB
44		PUP JOINT, 2 3/8in, 4.70lbs/ft, J-55, 44 ftKB, 72 ftKB
72		
240		
241		Surface Casing, 8 5/8in, 8.097in, 12 ftKB, 241 ftKB
250		Surface Casing Cement, 12-241, 11/28/1994, Cement w/ 235 sxs Class G. Circulated 13 bbls to surface. Cement fell re-cement from top
883	OJO ALAMO, 883	TUBING, 2 3/8in, 4.70lbs/ft, J-55, 72 ftKB, 1,766 ftKB
1,024	KIRTLAND, 1,024	
1,495		Production Casing Cement, 12-1,494, 12/1/1994, Cement w/ 230 sxs Class G followed by 50 sxs Class G. Circulated 7 bbls to surface.
1,496		
1,581	FRUITLAND, 1,581	
1,712		Fruitland Coal, 1/25/1995, Frac'd w/ 150,000 scf N2.
1,754		Fruitland Coal, 1,712-1,754, 1/24/1995
1,766		F-NIPPLE, 2 3/8in, 1,766 ftKB, 1,767 ftKB
1,767		2 3/8 X 1.90 SWAGE, 2 3/8in, 1,767 ftKB, 1,768 ftKB
1,768		GAUGE CARRIER/GUAGES, 1.900in, 1,768 ftKB, 1,780 ftKB
1,780		PUP JOINT, 1.900in, 1,780 ftKB, 1,790 ftKB
1,790		
1,790		SEAL ASSEMBLY, 2 3/8in, 1,790 ftKB, 1,793 ftKB
1,793		Packer, 1,790-1,793, Model D Wireline set.
1,793		
1,850		Fruitland Coal, 1/25/1995, Frac'd w/ 150,000 scf N2.
1,874		Fruitland Coal, 1,850-1,874, 1/24/1995
1,877	PICTURED CLIFFS, 1,877	
2,095		PBTD, 2,095
2,104		
2,105		Production Casing Cement, 1,494-2,149, 12/1/1994, Cement w/ 165 sxs Class G. Circulated 12 bbls to surface.
2,148		Cement Plug, 2,095-2,149, 12/2/1994
2,149		Production Casing, 5 1/2in, 4.950in, 12 ftKB, 2,149 ftKB
2,150		Cement Plug, 2,149-2,150, 12/2/1994
		TD, 2,150

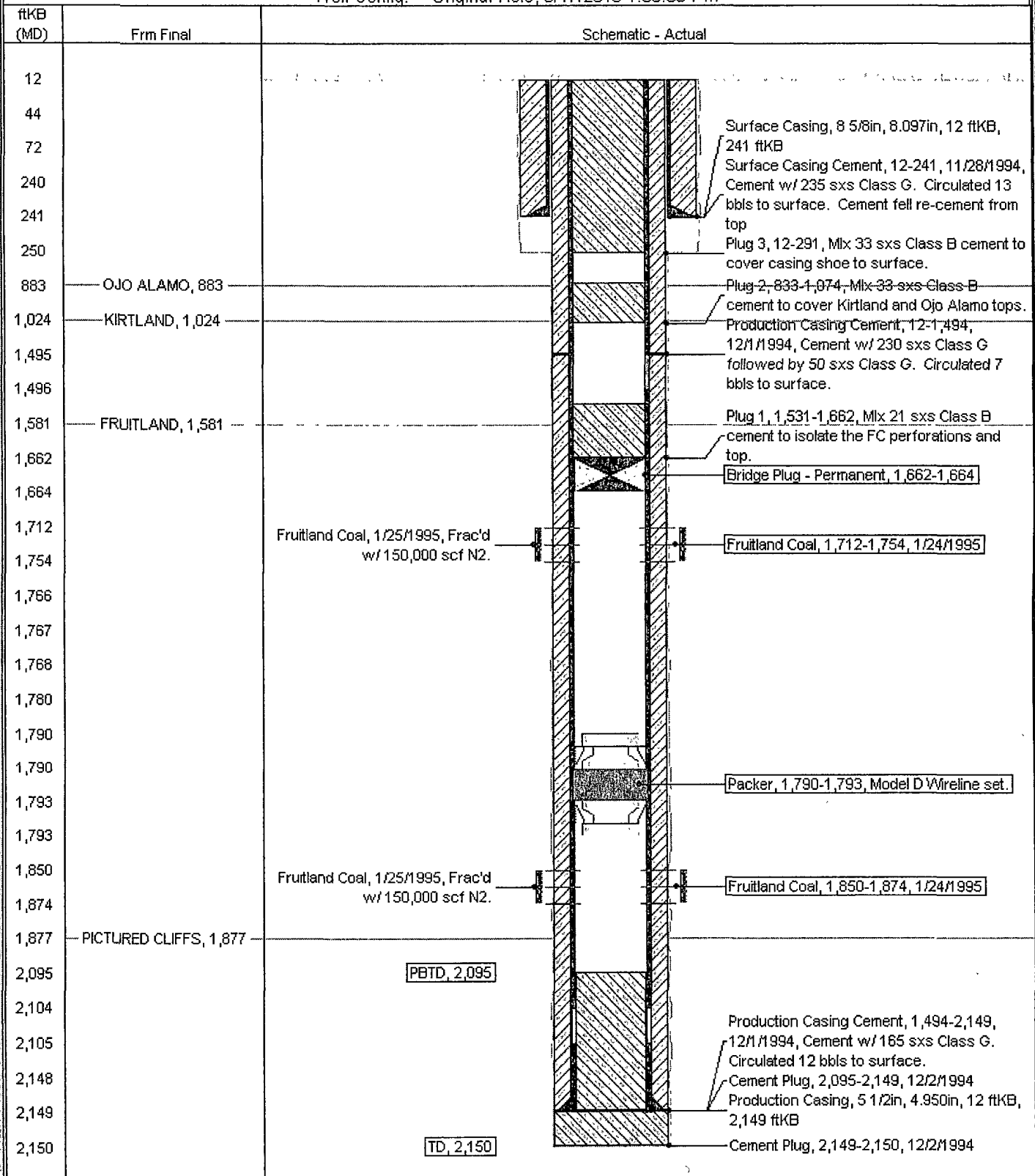
# Proposed Schematic

ConocoPhillips

Well Name: JOHNSON #3 POW

API/ UWI	Surface Legal Location	Field Name	License No.	State/Province	Well Completion Type	Edit
3004529203	NMPM-021-027N-010W	FLG HR KTZ PC(3A) #0215		NEW MEXICO		
Ground Elevation (ft)	Original KB/RT Elevation (ft)	KB-Grout Distance (ft)	KB-Casing Flange Distance (ft)	KB-Tubing Hanger Distance (ft)		
6,110.00	6,122.00	12.00	6,122.00	6,122.00		

Well Config: - Original Hole, 6/17/2010 1:55:35 PM



**UNITED STATES DEPARTMENT OF THE INTERIOR  
BUREAU OF LAND MANAGEMENT  
FARMINGTON DISTRICT OFFICE  
1235 LA PLATA HIGHWAY  
FARMINGTON, NEW MEXICO 87401**

Attachment to notice of  
Intention to Abandon:

Re: Permanent Abandonment  
Well: 3 Johnson

**CONDITIONS OF APPROVAL**

1. Plugging operations authorized are subject to the attached "General Requirements for Permanent Abandonment of Wells on Federal and Indian Lease."
2. Farmington Office is to be notified at least 24 hours before the plugging operations commence (505) 599-8907.
3. The following modifications to your plugging program are to be made:
  - a) Bring the top of the Pictured Cliffs/Fruitland plug to 1476'.
  - b) Place the Kirtland/Ojo Alamo plug from 1074' – 782'.

You are also required to place cement excesses per 4.2 and 4.4 of the attached General Requirements.

Office Hours: 7:45 a.m. to 4:30 p.m.