

# RECEIVED

In Lieu of  
Form 3160  
(June 1990)

UNITED STATES  
DEPARTMENT OF INTERIOR  
BUREAU OF LAND MANAGEMENT

JUN 30 2010

FORM APPROVED  
Budget Bureau No. 1004-0135  
Expires March 31, 1993

Bureau of Land Management  
Farmington Field Office

SUNDRY NOTICE AND REPORTS ON WELLS

Do not use this form for proposals to drill or to deepen or reentry to a different reservoir. Use "APPLICATION TO DRILL" for permit for such proposals

Lease Designation and Serial No.  
NMSF-078763

6 If Indian, Allottee or Tribe Name

7 If Unit or CA, Agreement Designation  
Rosa Unit

SUBMIT IN TRIPPLICATE

1 Type of Well  
Oil Well Gas Well ☒ Other

8 Well Name and No.  
Rosa Unit 41C

2 Name of Operator  
WILLIAMS PRODUCTION COMPANY

9 API Well No.  
30-039-30692

3 Address and Telephone No  
PO Box 640 Aztec, NM 87410-0640

10 Field and Pool, or Exploratory Area  
BLANCO MV/BASIN DK/BASIN MC

4 Location of Well (Footage, Sec., T., R., M., or Survey Description)  
850' FNL & 1980' FEL SEC 8 T31N 5W  
945' FSL & 1110' FEL SEC 5 T31N 5W

11 County or Parish, State  
Rio Arriba, New Mexico

CHECK APPROPRIATE BOX(s) TO INDICATE NATURE OF NOTICE, REPORT, OR OTHER DATA

TYPE OF SUBMISSION

Notice of Intent  
☒ Subsequent Report  
Final Abandonment

TYPE OF ACTION

Abandonment  
Recompletion  
Plugging Back  
Casing Repair  
Altering Casing  
☒ Other MV Completion

Change of Plans  
New Construction  
Non-Routine Fracturing  
Water Shut-Off  
Conversion to Injection  
Dispose Water  
(Note. Report results of multiple completion on Well Completion or Recompletion Report and Log form)

13 Describe Proposed or Completed Operations (Clearly state all pertinent details, and give pertinent dates, including estimated date of starting any proposed work. If well is directionally drilled, give subsurface locations and measured and true vertical depths for all markers and zones pertinent to this work)\*

5-17-10 - MIRU AWS #656 for mesaverde completion

5-18-10 - set 5-1/2" RBP @ 6720'

5-21-10 - Perf mesaverde 1<sup>st</sup> stage, 6406'-6667', with 50, 0.34" holes

5-22-10 - Frac mesaverde 1<sup>st</sup> stage with 82,282# 20/40 mesh PRS sand. Set RBP @ 6396'. Perf mesaverde 2<sup>nd</sup> stage, 6170'-6385', with 51, 0.34" holes. Frac mesaverde 2<sup>nd</sup> stage with 82,047# 20/40 mesh PRS sand. Set 5-1/2" RBP @ 6150'. Perf mesaverde 3<sup>rd</sup> stage, 5771'-6120', with 70, 0.34" holes. Frac mesaverde 3<sup>rd</sup> stage with 83,060# 20/40 mesh PRS sand.

5-24-10 thru 5-28-10 - CO and flow upper mesaverde to tank. Too wet to put down GREEN sales line

5-29-10 - Retrieve RBP @ 6150'

6-1-10 - Retrieve RBP @ 6396'

RCVD JUL 12 '10  
OIL CONS. DIV.  
DIST. 3

ACCEPTED FOR RECORD

JUL 06 2010

FARMINGTON FIELD OFFICE  
BY SCU

14 I hereby certify that the foregoing is true and correct

Signed Larry Higgins  
Larry Higgins

Title Permit Supervisor

Date 6-29-10

(This space for Federal or State office use)

Approved by \_\_\_\_\_

Title \_\_\_\_\_

Date \_\_\_\_\_

Conditions of approval, if any

Title 18 U.S.C. Section 1001, makes it a crime for any person knowingly and willfully to make to any department or agency of the United States any false, fictitious or fraudulent statements or representations as to any matter within its jurisdiction

AW

## Rosa Unit #41C – Page 2

6-2-10 – First Deliver mesaverde gas to sales via GREEN completion

6-3-10 thru 6-15-10 – CO and flow test mesaverde to sales as conditions permit. Gas very wet.

6-16-10 – Run PETRONICS spinner survey to try to pinpoint where water is coming from

6-17-10 thru 6-22-10 – Flow back upper mesaverde

6-23-10 – Retrieve RBP @ 6720'

6-25-10 – RU wireline and run 4" ID Owens Oil Tools casing patch 6241'-6271' to isolate wet zone

6-26-10 – RU wireline and run 4" ID Owens Oil Tools casing patch 5838'-5868' to isolate wet zone

6-27-10 – Land well as follows- 2-3/8" EUE half muleshoe, 1 jt 2 3/8" 4.7# N-80 EUE 8rd tbg, 1.78" I.D. F-nipple, 242 jts 2-3/8", 4.7# N-80 EUE 8rd tbg. EOT @ 7753' - 1.78" I.D. F-Nipple @ 7719'

**ROSA UNIT #41C**  
**BLANCO MV/BASIN MC/BASIN DK**

Spud: 05/19/09

Completed: 08/29/09

1<sup>st</sup> Delivery MV: 06/02/10

1<sup>st</sup> Delivery MC: 09/10/09

1<sup>st</sup> Delivery: DK: 09/10/09

Surface Location:

850' FNL and 1980' FEL  
NW/4 NE/4 Sec 8 (B), T31N, R05W  
Rio Arriba, NM

Bottom Hole Location:

945' FSL and 1110' FEL  
SE/4 SE/4 Sec 5 (P), T31N, R05W  
Rio Arriba, NM

Elevation: 6348' GR

API # 30-039-30692

Top	MD Depth	TVD Depth
Pictured Cliffs	3714'	3196'
Lewis	4024'	3447'
Cliffhouse Ss.	5984'	5405'
Menefee	6029'	5449'
Point Lookout	6199'	5619'
Mancos	6752'	6171'
Dakota	8488'	7905'

Mesaverde 3<sup>rd</sup>: 5771'-6120' ( 70, .34" holes) Frac with 83,060#  
20/40 mesh PRS sand. 4" ID Owens Csg patch 5838'-5868'

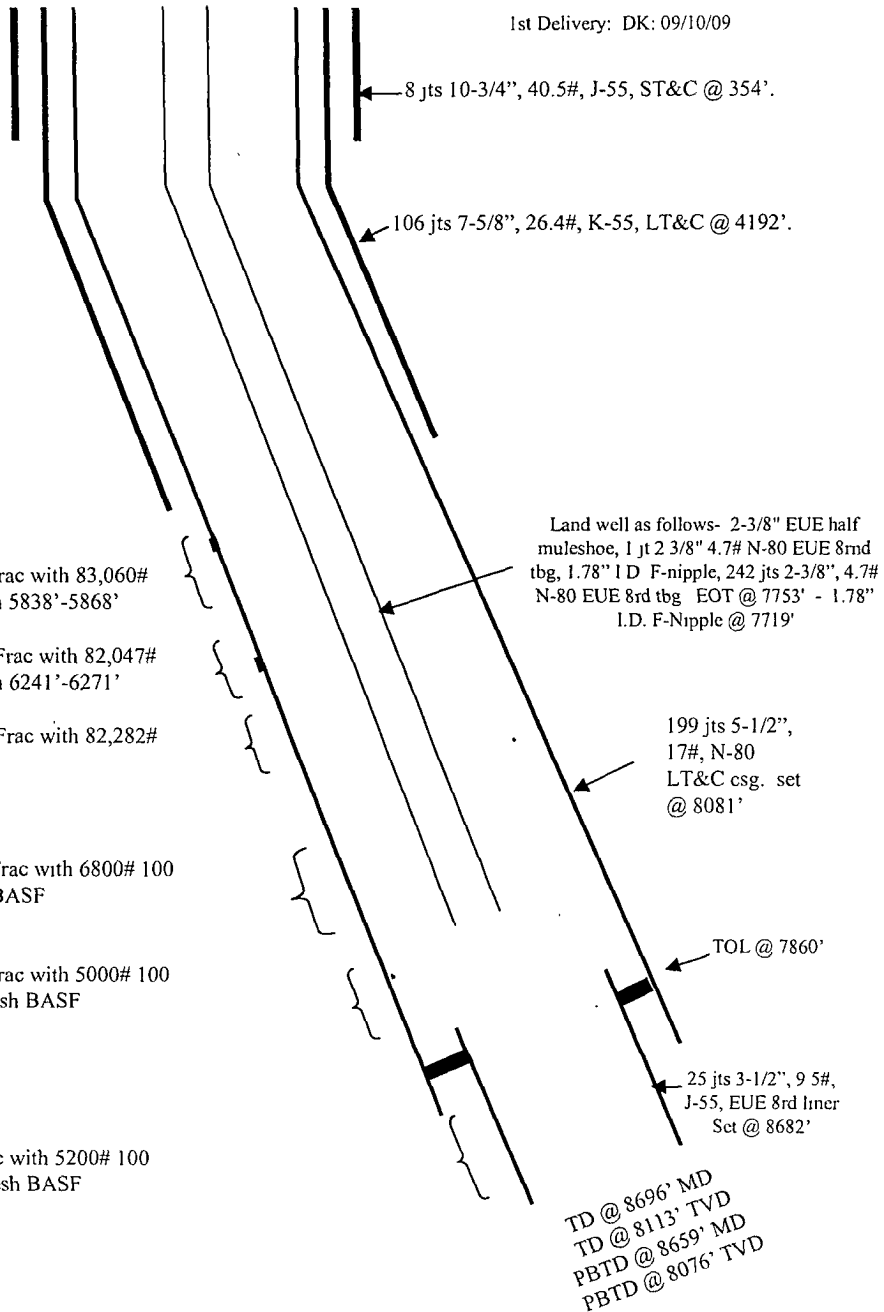
Mesaverde 2<sup>nd</sup>: 6170'-6385' (51, 0.34" holes) Frac with 82,047#  
20/40 mesh PRS sand. 4" ID Owens Csg patch 6241'-6271'

Mesaverde 1<sup>st</sup>: 6406'-6667' (50, 0.34" holes) Frac with 82,282#  
20/40 mesh PRS sand

Mancos 2<sup>nd</sup>: 7390' - 7630' (75, 0.34" holes) Frac with 6800# 100  
mesh BASF followed w/96,300# 40/70 mesh BASF

Mancos 1<sup>st</sup>: 7705' - 7846' ( 60, 0.34" holes) Frac with 5000# 100  
mesh BASF followed with 104,500# 40/70 mesh BASF

Dakota: 8490' - 8666' (102, 0.34" holes) Frac with 5200# 100  
mesh BASF followed with 121,400# 40/70 mesh BASF



Hole Size	Casing	Cement	Volume	Top of Cmt
14-3/4"	10-3/4", 40.5#	290 sxs	521 cu.ft.	Surface
9-7/8"	7-5/8", 26.4#	705 sxs	1757 cu ft.	Surface
6-3/4"	5-1/2", 17#	415 sxs	580 cu.ft.	4020' CBL
4-3/4"	3-1/2", 9.5#	50 sxs	72 cu.ft.	7980' CBL

LH 6-29-10