

UNITED STATES  
DEPARTMENT OF INTERIOR  
BUREAU OF LAND MANAGEMENT

FORM APPROVED  
Budget Bureau No. 1004-0135  
Expires: March 31, 1993

SUNDRY NOTICE AND REPORTS ON WELLS

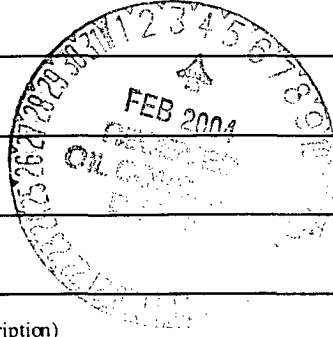
Do not use this form for proposals to drill or to deepen or reentry to a different reservoir. Use "APPLICATION TO DRILL" for permit for such proposals

RECEIVED

070 Farmington, NM

SUBMIT IN TRIPLICATE

1. Type of Well  
Oil Well ☐ Gas Well ☒ Other ☐
2. Name of Operator  
**WILLIAMS PRODUCTION COMPANY**
3. Address and Telephone No.  
**PO BOX 316 Ignacio, Colorado 81137 (970)563-3308**
4. Location of Well (Footage, Sec., T., R., M., or Survey Description)  
**940 FNL & 2255 FEL, Sec 33, T31N, R5W**



5. Lease Designation and Serial No.  
**SF-078773**
6. If Indian, Allottee or Tribe Name
7. If Unit or CA, Agreement Designation  
**Rosa**
8. Well Name and No.  
**Rosa Unit #147B**
9. API Well No.  
**30-039-26960**
10. Field and Pool, or Exploratory Area  
**Basin Mesa Verde/Dakota**
11. County or Parish, State  
**Rio Arriba, New Mexico**

CHECK APPROPRIATE BOX(s) TO INDICATE NATURE OF NOTICE, REPORT, OR OTHER DATA

TYPE OF SUBMISSION	TYPE OF ACTION
<input checked="" type="checkbox"/> Notice of Intent	Abandonment
<input checked="" type="checkbox"/> Subsequent Report	Recompletion
Final Abandonment	Plugging Back
	Casing Repair
	Altering Casing
	<input checked="" type="checkbox"/> Other <u>see below</u>
	Change of Plans
	New Construction
	Non-Routine Fracturing
	Water Shut-Off
	Conversion to Injection
	Dispose Water
	(Note: Report results of multiple completion on Well Completion or Recompletion Report and Log form.)

13. Describe Proposed or Completed Operations (Clearly state all pertinent details, and give pertinent dates, including estimated date of starting any proposed work. If well is directionally drilled, give subsurface locations and measured and true vertical depths for all markers and zones pertinent to this work.)\*

Williams Production Company, LLC intends to directionally drill this well from the above surface location to a BHL of 1525 FNL & 2255 FEL, Sec 33, T31N, R5W. This is being done to avoid interference with our Rosa #268 Fruitland Coal well. A new C-102, operations plan and a directional plan are attached.

HOLD C104 FOR Directional Survey

14. I hereby certify that the foregoing is true and correct

Signed Larry Higgins  
Larry Higgins

Title Drilling C.O.M.

Date 1-26-04

(This space for Federal or State office use)

Approved by Wayne Townsend

Title Pet. Eng.

Date 2-2-04

Conditions of approval, if any:

Title 18 U.S.C. Section 1001, makes it a crime for any person knowingly and willfully to make to any department or agency of the United States any false, fictitious or fraudulent statements or representations as to any matter within its jurisdiction.

NMOCD

District I  
PO Box 1980, Hobbs, NM 88241-1980

District II  
PO Drawer DD, Artesia, NM 88211-0719

District III  
1000 Rio Brazos Rd., Aztec, NM 87410

District IV  
PO Box 2088, Santa Fe, NM 87504-2088

State of New Mexico  
Energy, Minerals & Natural Resources Department

OIL CONSERVATION DIVISION  
PO Box 2088  
Santa Fe, NM 87504-2088

Form C-102

Revised February 21, 1994

Instructions on back  
Submit to Appropriate District Office  
State Lease - 4 Copies  
Fee Lease - 3 Copies

☐ AMENDED REPORT

WELL LOCATION AND ACREAGE DEDICATION PLAT

*API Number		*Pool Code 72319 / 71599	*Pool Name Blanco Mesaverde / Basin Dakota
*Property Code 17033	*Property Name ROSA UNIT		*Well Number 147B
*GRID No. 120782	*Operator Name WILLIAMS PRODUCTION COMPANY		*Elevation 6513'

<sup>10</sup> Surface Location

UL or lot no.	Section	Township	Range	Lot Idn	Feet from the	North/South line	Feet from the	East/West line	County
B	33	31N	5W		940	NORTH	2255	EAST	RIO ARriba

<sup>11</sup> Bottom Hole Location If Different From Surface

UL or lot no.	Section	Township	Range	Lot Idn	Feet from the	North/South line	Feet from the	East/West line	County
G	33	31N	5W		1525	NORTH	2255	EAST	RIO ARriba

<sup>12</sup> Dedicated Acres 320.0 Acres - (N/2)	<sup>13</sup> Joint or Infill	<sup>14</sup> Consolidation Code	<sup>15</sup> Order No.
--	-------------------------------	----------------------------------	-------------------------

NO ALLOWABLE WILL BE ASSIGNED TO THIS COMPLETION UNTIL ALL INTERESTS HAVE BEEN CONSOLIDATED OR A NON-STANDARD UNIT HAS BEEN APPROVED BY THE DIVISION

<div><p><sup>16</sup></p><p>5280.00'</p><p>5280.00'</p><p>5286.60'</p><p>940'</p><p>1525'</p><p>585'</p><p>2255'</p><p>2255'</p><p>33</p><p>LEASE SF-078713</p><p>FEB 2004 RECEIVED OIL CON. DIV. DIST. 3</p></div>	<div><p><sup>17</sup> OPERATOR CERTIFICATION</p><p>I hereby certify that the information contained herein is true and complete to the best of my knowledge and belief</p><p><i>Larry Higgins</i> Signature</p><p>LARRY HIGGINS Printed Name</p><p>DRILLING COM Title</p><p>1-26-04 Date</p></div>
	<div><p><sup>18</sup> SURVEYOR CERTIFICATION</p><p>I hereby certify that the well location shown on this plat was plotted from field notes of actual surveys made by me or under my supervision, and that the same is true and correct to the best of my belief.</p><p>Revised: JANUARY 22, 2004 Survey Date: FEBRUARY 5, 2001</p><p>Signature and Seal of Professional Surveyor</p><div><p>JASON C. EDWARDS Certificate Number 15269</p></div></div>



## WILLIAMS PRODUCTION COMPANY

### OPERATIONS PLAN

(Note: This procedure will be adjusted on site based upon actual conditions)

**DATE:** 1/22/2004

**WELL NAME:** Rosa Unit 147B

**FIELD:** Basin Blanco MV/DK

**SURFACE LOCATION:** NW/4 NE/4 Sec. 33-T31N-R5W  
Rio Arriba, NM

**SURFACE:** FOREST

**ELEVATION:** 6513' GR

**MINERALS:** FOREST

**LEASE #** SF-078773

**MEASURED DEPTH:** 8255'

**I. GEOLOGY:** Surface formation - San Jose

**A. FORMATION TOPS:** ( KB)

Name	TVD	MD	Name	TVD	MD
Ojo Alamo	2,645	2,686	Cliff House	5,575	5,626
Kirtland	2,735	2,778	Menefee	5,625	5,676
Fruitland	3,150	3,197	Point Lookout	5,810	5,861
Picture Cliffs	3,395	3,443	Mancos	6,105	6,156
Lewis	3,670	3,720	Gallup	7,105	7,156
			Greenhorn	7,830	7,881
			Graneros	7,880	7,931
			Dakota	8,005	8,056
			TD		8,306

**B. LOGGING PROGRAM:** DIL from TD to the Intermediate Casing Shoe. CNL/FDC over intervals of interest (selected intervals by on-site Geologist). *Subject to change as wellbore conditions dictate.*

**C. NATURAL GAUGES:** Gauge any noticeable increases in gas flow. Gauge well @ 5800' and before TOH for logs. Record all gauges in Tour book and on morning reports.

## **II. DRILLING**

**A. MUD PROGRAM:** Clear water with benex to 7-5/8" casing point. LSND to log and run pipe. Treat for lost circulation as necessary. Obtain 100% returns prior to cementing. Notify Engineering of any mud losses.

**B. BOP TESTING:** While drill pipe is in use, the pipe rams will be function tested not less than once each day. The blind rams will be function tested once each trip. The anticipated reservoir is expected to be less than 1300 psi, so the rams will be tested to 1500 psi. The drum brakes will be inspected and tested each tour. All tests, inspections and SPR's will be recorded in the tour book. as to time and results

### III. MATERIALS

#### A. CASING PROGRAM:

<u>CASING TYPE</u>	<u>HOLE SIZE</u>	<u>DEPTH(MD)</u>	<u>CASING SIZE</u>	<u>WT. &amp; GRADE</u>
Surface	14-3/4"	+/- 300'	10-3/4"	32.75# H-40
Intermediate	9-7/8"	+/-3920'	7-5/8"	26.4# K-55
Prod. Casing	6-3/4"	+/- 8306'	5-1/2"	17.0# N-80

#### B. FLOAT EQUIPMENT:

1. SURFACE CASING: 10-3/4" notched regular pattern guide shoe. Run (1) Standard centralizer on each of the bottom (3) Joints.
2. INTERMEDIATE CASING: 7-5/8" cement nose guide shoe with a self- fill insert float. Place float one (1) joint above the shoe and five (5) centralizers, spaced every other joint, starting with the float collar. Place turbulent centralizers, at 120' intervals, starting at 1500' to the surface. Total centralizers (5 regular and 13 turbulent).
3. PRODUCTION CASING: 5-1/2" whirler type cement nose guide shoe with a latch collar on top of 20' bottom joint. Place 20' marker joint on top of 10 th joint and one above 5100'.

#### C. CEMENTING:

*(Note: Volumes may be adjusted onsite due to actual conditions)*

1. SURFACE: Use 230sx (313cu.ft.) of class "Type III" with 2% CaCl<sub>2</sub> and 1/4# of cello-flake/sk (Yield = 1.39 cu.ft./sk, Weight = 14.5 #/gal.). 125% excess to circulate the surface. WOC 12 hours. Test to 1500#.
2. INTERMEDIATE: Lead: 610sx (1265cu.ft.) of class "Premium Lite" 65/35, Type III/Poz with 8% gel and 1/4# cello-flake/sk (Yield = 2.09 cu.ft./sk, Weight = 12.1 #/gal.). Tail: 150sx (209cu.ft.) of class "Type III" with 1/4# cello-flake/sk (Yield = 1.39 cu.ft./sk, Weight = 14.5#/gal.). 100% excess in lead to circulate to surface. Total volume = 1633 cu.ft. WOC 12 hours. Run a temperature survey after 8 hours if cement is not circulated.
3. PRODUCTION CASING: 10 bbl Gelled Water space. Scavenger: 30sx (130ft<sup>3</sup>) of Premium Light HS + 1% FL-52 + .2% CD-32, 0.1% R-3, 3 #/sk CSE, ¼ #/sk cello flake. (Yield = 2.59 cu.ft./sk, Weight = 11.6 #/gal.). Tail: 175 sx (375 ft<sup>3</sup>) of Premium Light HS + 1% FL-52 + .2% CD-32, 0.1% R-3, 3 #/sk CSE, ¼ #/sk cello flake and 4% Phenoseal. (Yield = 2.15 ft<sup>3</sup>/sk, Weight = 12.3 #/gal.). Displace cement at a minimum of 8 BPM. The 20% excess in lead and tail should cover 100 ft into intermediate casing. Total volume 375 ft<sup>3</sup>. WOC 12 hours

#### **IV COMPLETION**

##### **A. CBL**

1. Run Cement Bond Log across all intervals to be perforated and find Top of Cement behind all casing strings if cement not circulated to surface..

##### **B. PRESSURE TEST**

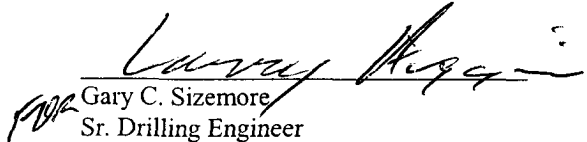
1. Pressure test 7 5/8" & 5-1/2" casing to 3300# for 15 minutes.

##### **C. STIMULATION**

1. Stimulate Dakota with approximately 70,000# of 20/40 sand in x-link foam.
2. Isolate Dakota with a RBP.
3. Stimulate Point Lookout with approximately 80,000# of 20/40 sand in slick water.
4. Isolate Point Lookout with a RBP.
5. Perforate the Menefee/Cliff House as determined from the open hole logs.
6. Stimulate with approximately 80,000# of 20/40 sand in slick water.
7. Test each zone before removing bridge plugs.

##### **D. RUNNING TUBING**

1. Dakota: Run 2-1/16", 3.25#, J-55, IJ tubing with 1/2 mule shoe on bottom, SN with pump-out plug on top of adeem joint and 5 Seal Units. Land tubing approximately 100' below top Dakota perf.
2. Mesa Verde: Run 2-1/16", 2.9#, J-55, EUE tubing with a SN (1.91" ID) on top of bottom joint. Land tubing approximately 25' above the bottom Point Lookout perforations.

  
Gary C. Sizemore  
Sr. Drilling Engineer

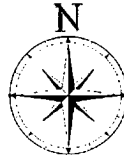
HALLIBURTON

## Williams Production Company

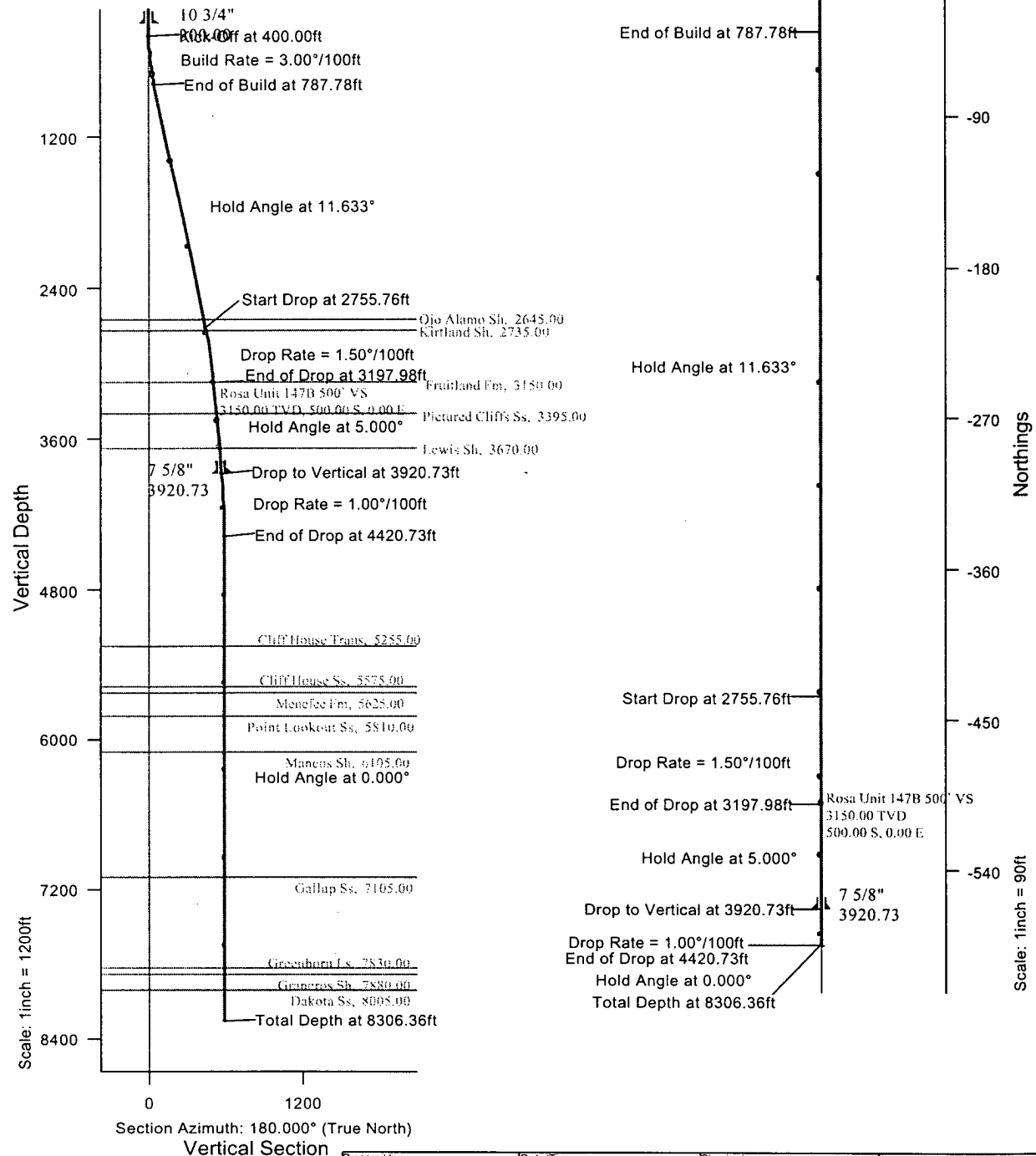
DrillQuest™

Sperry-Sun

New Mexico  
Rio Arriba County  
Sec. 33-T31N-R05W  
Rosa Unit # 147B  
Plan 01/13/04



Eastings  
Scale: 1 inch = 90ft



Prepared by:  
Admin

Date/Time:  
13 January, 2004 - 15:32

Checked:

Approved: