

UNITED STATES
DEPARTMENT OF THE INTERIOR
BUREAU OF LAND MANAGEMENTFORM APPROVED
OMB NO. 1004-0136
Expires: November 30, 2000

FEB 2004

RECEIVED

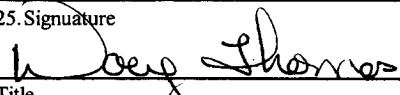

APPLICATION FOR PERMIT TO DRILL OR REENTER

1a. Type of Work <input checked="" type="checkbox"/> DRILL <input type="checkbox"/> REENTER		5. Lease Serial No. SF-079488A
1b. Type of Well <input type="checkbox"/> Oil Well <input checked="" type="checkbox"/> Gas Well <input type="checkbox"/> Other <input type="checkbox"/> Single Zone <input checked="" type="checkbox"/> Multiple Zone		6. If Indian, Allottee or Tribe Name
2. Name of Operation Energen Resources Corporation		7. Unit or CA Agreement Name and No.
3a. Address 2198 Bloomfield Highway Farmington, New Mexico 87402	3b. Phone No. (include area code) (505)325-6800	8. Lease Name and Well No. Carson 13A
4. Location of Well (Report location clearly and in accordance with any State requirements)* At surface 1835' FSL, 890' FWL At proposed prod. zone		9. API Well No. 3003927557
10. Field and Pool, or Exploratory Blanco Mesaverde		11. Sec., T., R., M., or Blk. and Survey or Area Sec. 32, T30N, R4W, N.M.P.M.
14. Distance in miles and direction from nearest town or post office* 9 miles Northeast of Gobernador, New Mexico		12. County or Parish Rio Arriba
15. Distance from proposed* location to nearest property or lease line, ft. (Also to nearest drg. unit line, if any) 890'		13. State NM
16. No. of Acres in lease 1186.72		17. Spacing Unit dedicated to this well W/2 302.36
18. Distance from proposed location* to nearest well, drilling, completed, applied for, on this lease, ft. 2200'		20. BLM/BIA Bond No. on file
21. Elevations (Show whether DF, KDB, RT, GL, etc.) 7553" GL		22. Approximate date work will start* July 2003
		23. Estimated duration 11 Days

24. Attachments

The following, completed in accordance with the requirements of Onshore Oil and Gas Order No. 1, shall be attached to this form:

- | | |
|---|--|
| 1. Well plat certified by a registered surveyor. | 4. Bond to cover the operations unless covered by an existing bond on file (see Item 20 above). |
| 2. A Drilling Plan | 5. Operator certification. |
| 3. A Surface Use Plan (if the location is on National Forest System Lands, the SUPO shall be filed with the appropriate Forest Service Office). | 6. Such other site specific information and/or plans as may be required by the authorized officer. |

25. Signature 	Name (Printed/Typed) Doug Thomas	Date 7/11/02
Title Drilling Completion Foreman		
Approved by (Signature) 	Name (Printed/Typed)	Date FEB - 3 2004
Title Office		

Application approval does not warrant or certify that the applicant holds legal or equitable title to those rights in the subject lease which would entitle the applicant to conduct operations thereon.

Conditions of approval, if any, are attached.

Title 18 U.S.C. Section 1001 and Title 43 U.S.C. Section 1212, make it a crime for any person knowingly and willfully to make to any department or agency of the United States any false, fictitious or fraudulent statements or representations as to any matter within its jurisdiction.

*(Instructions on Reverse)

NMOCB

District II
PO Drawer DD, Artesia, NM 88211-0719

OIL CONSERVATION DIVISION

Instructions on back
Submit to Appropriate District Office
State Lease - 4 Copies
Fee Lease - 3 Copies

District III
1000 Rio Brazos Rd., Aztec, NM 87410

PO Box 2088
Santa Fe, NM 87504-2088

District IV
PO Box 2088, Santa Fe, NM 87504-2088

☐ AMENDED REPORT

WELL LOCATION AND ACREAGE DEDICATION PLAT

*API Number 30-039-27557		*Pool Code 72319	*Pool Name BLANCO MESAVERDE
*Property Code 21185	*Property Name CARSON		*Well Number 13A
*GRID No. 162928	*Operator Name ENERGEN RESOURCES CORPORATION		*Elevation 7553'

10 Surface Location

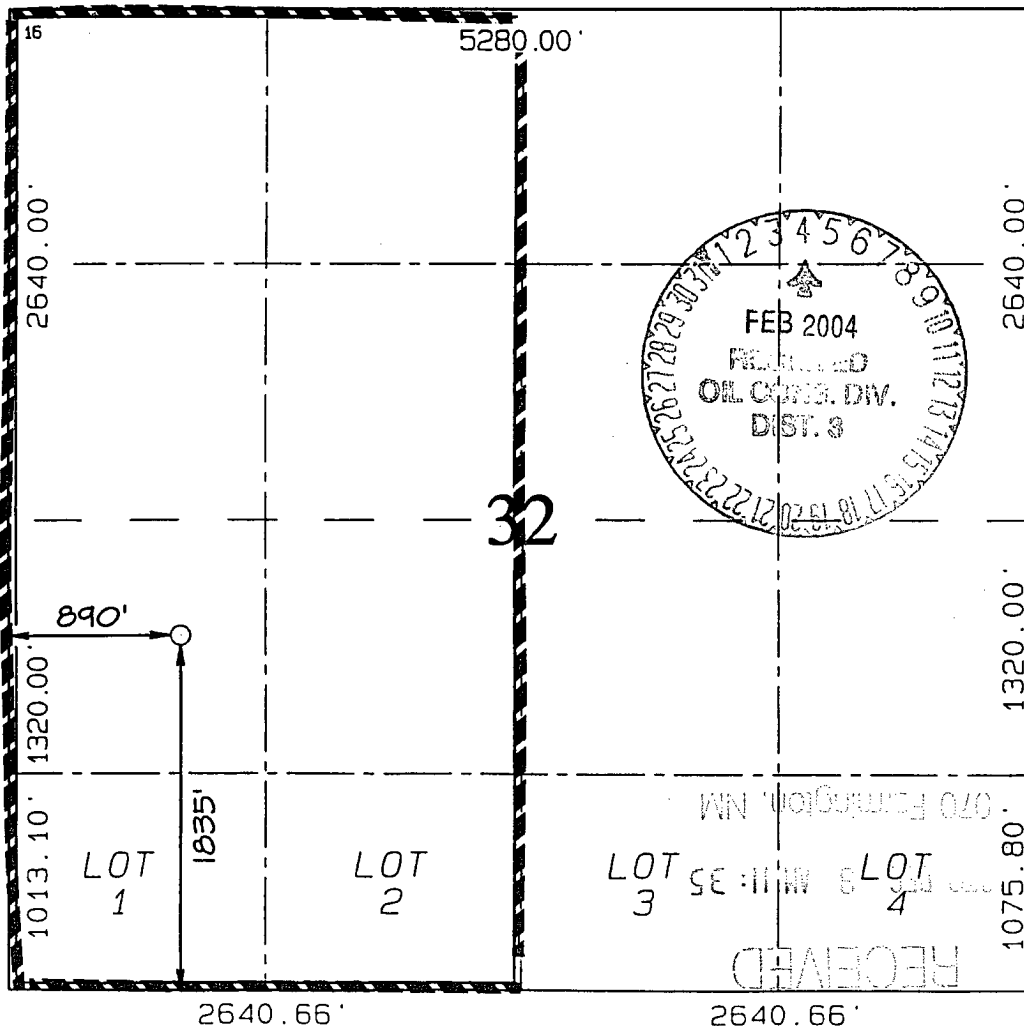
UL or lot no.	Section	Township	Range	Lot Idn	Feet from the	North/South line	Feet from the	East/West line	County
L	32	30N	4W		1835	SOUTH	890	WEST	RIO ARriba

11 Bottom Hole Location If Different From Surface

UL or lot no.	Section	Township	Range	Lot Idn	Feet from the	North/South line	Feet from the	East/West line	County

12 Dedicated Acres 302.36 Acres - W/2	13 Joint or Infill	14 Consolidation Code	15 Order No.
--	--------------------	-----------------------	--------------

NO ALLOWABLE WILL BE ASSIGNED TO THIS COMPLETION UNTIL ALL INTERESTS HAVE BEEN CONSOLIDATED
OR A NON-STANDARD UNIT HAS BEEN APPROVED BY THE DIVISION



17 OPERATOR CERTIFICATION

I hereby certify that the information contained herein is true and complete to the best of my knowledge and belief

Don Graham
Signature

Don Graham
Printed Name

Production Superintendant
Title

7-19-02
Date

17-19-02
Date

18 SURVEYOR CERTIFICATION

I hereby certify that the well location shown on this plat was plotted from field notes of actual surveys made by me or under my supervision, and that the same is true and correct to the best of my belief.

Date of Survey: MAY 28, 2002

Signature and Seal of Professional Surveyor



JASON C. EDWARDS
Certificate Number 15269

OPERATIONS PLAN

WELL NAME: Carson #13A

LOCATION: 1835' FSL, 890' FWL, Section 32, T30N, R4W, Rio Arriba County, NM

FIELD: Blanco Mesaverde

ELEVATION: 7553' GR

FORMATION TOPS:

Surface	San Jose	Huerfanito Benonite	5250
Nacimiento	2385	Cliff House	6110
Ojo Alamo	3640	Menefee	6415
Kirtland	3870	Point Lookout	6660
Fruitland	4075	Mancos Sh	7155
Pictured Cliffs	4290		
Lewis	4585	Total Depth	7210

LOGGING PROGRAM:

Open Hole Logs:

Surface to intermediate: None

Inter TD to total depth: Temp/HRI/CNT; LDT/GR, MRIL

Mud Logs: None

Coring: None

Natural Gauges: Every 500' from intermediate T. D. to T. D.

MUD PROGRAM: Fresh water low solids mud from surface to intermediate T. D. Air/mist from intermediate casing point to T. D.

CASING PROGRAM:

<u>HOLE SIZE</u>	<u>DEPTH</u>	<u>CSG SIZE</u>	<u>WT.</u>	<u>GRADE</u>
12 1/4"	200'	9 5/8"	36#	J-55
8 3/4"	4810'	7"	20 & 23#	J-55
6 1/8"	4660'-7210'	4 1/2"	10.5#	J-55

TUBING PROGRAM:

7150	2 3/8"	4.7	J-55
------	--------	-----	------

WELLHEAD: 11" 3000 x 9 5/8" casing head. 11" 3000 x 7 1/16" 3000 xmas tree.

BOP SPECIFICATIONS:

An 11" 2000 psi minimum double gate BOP stack (Figure 1) will be used following nipple up of casing head. During air drilling operations, a Shaffer Type 50 or equivalent rotating head will be installed on top of the stack. A 2" nominal, 2000 psi minimum choke manifold will be used.

CEMENTING:

9 5/8" surface casing - Cement with 110 sks Class B Cement with 1/4# flocele/sk and 2% calcium chloride (130 cu. ft. of slurry, 100% excess to circulate to surface). WOC 12 hrs. Test casing to 600# for 30 minutes.

Texas Pattern Guide Shoe on bottom. 3 bow type centralizers spaced throughout the string.

7" intermediate casing:

Cement with 500 sks 65/35 Class B Poz with 6% gel, 2% calcium chloride, 10% gilsonite, and 1/4# flocele/sk. Tail with 100 sks Class B w/2% calcium chloride, 10% gilsonite and 1/4# flocele/sk. (1084 cu. ft. of slurry, 50% excess to circulate to surface). WOC 12 hrs. If cement does not circulate, run temperature survey in 8 hrs. to determine TOC. Test casing to 1200 psi for 30 minutes.

Cement nose guide shoe on bottom with a self-fill insert float valve on top of shoe joint. 10 bow spring centralizers spaced every 3rd joint off bottom. Two turbolating centralizers at the base of the Ojo Alamo.

4 1/2" Production Liner

Cement with 285 sks 50/50 poz with 2% gel, 5 PPS gilsonite, .4% halad - 9 and 1/4# flocele/sk (360 cu. ft., 50% excess to tie into intermediate casing string). WOC 18 hrs prior to completion.

Cement nose guide shoe on bottom with float collar on top of shoe joint.

OTHER INFORMATION:

- 1) The Blanco Mesa Verde will be completed.
- 2) No abnormal temperatures or pressures are anticipated.
- 3) Anticipated pore pressure for the Fruitland Coal is 800, Pictured Cliffs 900 and the Mesaverde is 1100.
- 4) If lost circulation is encountered, sufficient LCM will be added to the mud system to maintain well control.
- 5) This gas is dedicated.