

UNITED STATES
DEPARTMENT OF INTERIOR
BUREAU OF LAND MANAGEMENT

FORM APPROVED
Budget Bureau No. 1004-0135
Expires: March 31, 1993

SUNDRY NOTICE AND REPORTS ON WELLS

Do not use this form for proposals to drill or to deepen or reentry to a different reservoir. Use "APPLICATION TO DRILL" for permit for such proposals.

RECEIVED

JUL 16 2010

SUBMIT IN TRIPLICATE

Farmington Field Office
Bureau of Land Management

1. Type of Well Oil Well Gas Well X Other	5. Lease Designation and Serial No. NMSF-078769
2. Name of Operator WILLIAMS PRODUCTION COMPANY	6. If Indian, Allottee or Tribe Name
3. Address and Telephone No. PO Box 640 Aztec, NM 87410-0640 (505) 634-4208	7. If Unit or CA, Agreement Designation Rosa Unit
4. Location of Well (Footage, Sec., T., R., M., or Survey Description) 1980 FSL & 800 FWL sec 28, T31N, R5W NMPM	8. Well Name and No. Rosa Unit#146B
	9. API Well No. 30-039-29833
	10. Field and Pool, or Exploratory Area BLANCO MV/BASIN DK/BASIN MANCOS
	11. County or Parish, State Rio Arriba, New Mexico

CHECK APPROPRIATE BOX(s) TO INDICATE NATURE OF NOTICE, REPORT, OR OTHER DATA

TYPE OF SUBMISSION

TYPE OF ACTION

X Notice of Intent
Subsequent Report
Final Abandonment

Abandonment
Recompletion
Plugging Back
Casing Repair
Altering Casing
X Other MANCOS COMPLETION

Change of Plans
New Construction
Non-Routine Fracturing
Water Shut-Off
Conversion to Injection
Dispose Water
(Note: Report results of multiple completion on Well Completion or Recompletion Report and Log form.)

13. Describe Proposed or Completed Operations (Clearly state all pertinent details, and give pertinent dates, including estimated date of starting any proposed work. If well is directionally drilled, give subsurface locations and measured and true vertical depths for all markers and zones pertinent to this work.)*

The Dakota and MesaVerde formations on this well were completed in 2007. The well is presently flowing the MesaVerde and Dakota formations. At this time, Williams plans to move back on this well and complete the Mancos as per the attached procedure. After Mancos completion the formations will be commingled. Sundries for commingled authorization will be filed at a later date.

RCUD JUL 22 '10
OIL CONS. DIV.
DIST. 3

14. I hereby certify that the foregoing is true and correct

Signed

Heather Riley

Title Regulatory Specialist, Sr. Date 7/16/2010

(This space for Federal or State office use)

Approved by

Troy L. Salyers

Title

PE

Date

7/20/2010

Conditions of approval, if any:

District I
1625 N. French Dr., Hobbs, NM 88240

District II
1301 W. Grand Avenue, Artesia, NM 88210

District III
1000 Rio Brazos Rd., Aztec, NM 87410

District IV
1220 S. St. Francis Dr., Santa Fe, NM 87505

State of New Mexico
Energy, Minerals & Natural Resources Department

OIL CONSERVATION DIVISION
1220 South St. Francis Dr.
Santa Fe, NM 87505

Form C-102

Revised October 12, 2005

Instructions on back

Submit to Appropriate District Office

State Lease - 4 Copies

Fee Lease - 3 Copies

RECEIVED

☐ AMENDED REPORT

JUL 16 2010

WELL LOCATION AND ACREAGE DEDICATION PLAT

*API Number 30-034-29833	*Pool Code 97232 / 72319 / 71599	*Farmington Field Office Name Bureau of Land Management BASIN MANCOS / BLANCO MESA VERDE / BASIN DAKOTA
*Property Code 17033	*Property Name ROSA UNIT	*Well Number 146B
*DGRID No. 120782	*Operator Name WILLIAMS PRODUCTION COMPANY	*Elevation 6451'

¹⁰ Surface Location

UL or lot no. L	Section 28	Township 31N	Range 5W	Lot Idn	Feet from the 1980	North/South line SOUTH	Feet from the 800	East/West line WEST	County RIO ARriba
--------------------	---------------	-----------------	-------------	---------	-----------------------	---------------------------	----------------------	------------------------	----------------------

¹¹ Bottom Hole Location If Different From Surface

UL or lot no.	Section	Township	Range	Lot Idn	Feet from the	North/South line	Feet from the	East/West line	County
---------------	---------	----------	-------	---------	---------------	------------------	---------------	----------------	--------

¹² Dedicated Acres 320.0 Acres - (W/2)	¹³ Joint or Infill	¹⁴ Consolidation Code	¹⁵ Order No.
--	-------------------------------	----------------------------------	-------------------------

NO ALLOWABLE WILL BE ASSIGNED TO THIS COMPLETION UNTIL ALL INTERESTS HAVE BEEN CONSOLIDATED
OR A NON-STANDARD UNIT HAS BEEN APPROVED BY THE DIVISION

<div><p>16</p><p>LEASE SF-078769</p><p>5286.60'</p><p>5280.00'</p><p>800'</p><p>LAT: 36.86879°N LONG: 107.37395°W DATUM: NAD1983</p><p>28</p><p>5286.60'</p></div>	<div><p>¹⁷ OPERATOR CERTIFICATION</p><p>I hereby certify that the information contained herein is true and complete to the best of my knowledge and belief, and that this organization either owns a working interest or unleased mineral interest in the land including the proposed bottom-hole location or has a right to drill this well at this location pursuant to a contract with an owner of such a mineral or working interest, or to a voluntary pooling agreement or a compulsory pooling order heretofore entered by the division</p><p><i>Heather Riley</i> 7/16/10 Signature Date Heather Riley Printed Name</p><p>¹⁸ SURVEYOR CERTIFICATION</p><p>I hereby certify that the well location shown on this plat was plotted from field notes of actual surveys made by me or under my supervision, and that the same is true and correct to the best of my belief</p><p>Survey Date: NOVEMBER 10, 2005</p><p>Signature and Seal of Professional Surveyor</p><div><p>JASON C. EDWARDS NEW MEXICO 15269 REGISTERED PROFESSIONAL SURVEYOR</p></div><p>JASON C. EDWARDS Certificate Number 15269</p></div>
--	---

PROJECT OBJECTIVE:

This well will be a Commingled Completion of the Dakota, Mancos, and Mesa Verde vertical wellbore. The Dakota and Mesaverde intervals have been completed and produced for 3 years as a dual completion. It will be necessary to remove the dual production strings and packer before re-completing. This completion will be for the Mancos interval. It is intended to vary the frac job type in order to improve well performance. This is a sciences project of the Denver Exploration Group. Exceptions are the critical items noted next.

CRITICAL ITEM DISCUSSION:

This will be a green completion. No reserve pit will be available so use a flowback tank for catching liquids. It will be necessary to frac down a 3 1/2" N-80 tubing work string below a packer to isolate the Mesaverde perms.

1. PREPARATION:

1. Have 14 Frac Tanks filled with clean fresh water with 2% KCl (may use filtered produced water for only Pad and slick water portion of frac). Add biocide while filling.
2. MIRU Completion Unit. NDWH and NU BOPE.
3. MIRU Green Completion Unit.
4. TOOH and LD prod tbg short string.
5. Mesaverde Tubing: 190 jts 2-1/16", 3.25#, J-55 tbg landed @ 6013' as follows: orange peeled perf sub, 1.50" SN @ 6008' & 190 jts tbg.
6. TOOH and LD prod tbg long string.
7. Dakota Tubing: 254 jts 2-1/16", 3.25#, J-55 tbg landed @ 8033' as follows: 1/2" mule shoe pup jt, 1.50" SN @ 8029', 61 jts tbg, 2.688" seal assembly, 192 jts tbg, 2', 6' & 8' pup jts & 1 jt tbg.
8. PU Packer plucker to remove Arrow model "B" packer set at 6114' and 2 7/8" N-80 work string and TIH.
9. After removing packer make a bit and scraper run to clean out casing.
10. Set CIBP above Dakota at 7580' and dump-bail cement on top.
11. RU perforating company and perforate Mancos formation 3 shots per location with a 3 3/8" select fire gun with a 10 gram charge for a .34 hole and 21" penetration. See Perforation Plan Sheet..
12. TIH w/ pkr on 2 7/8" N-80 work string tbg and set below Mancos perms at apprx 7420' (btm MC perf at 7385'). Pressure test CIBP. Unset pkr and move up hole to apprx 7050' and reset pkr.
13. Perform DFIT on Mancos per Halliburton Procedure and shut in for pressure recording 3-4 days.
14. TOOH LD 2 7/8" work string.
15. TIH w/ 3-1/2" N-80 Frac string tbg and Packer. Set Packer at apprx 7050'.
16. Load annulus with water (since MV is open it will not hold a full column of fluid).
17. Load tbg w/ 2% KCl wtr.
18. At least one day prior to frac, have Halliburton set Mountain Mover (sand container) and load with sand. If possible have them also set the suction manifold to hook up the frac tanks.

2. FRAC MANCOS:

19. Frac Mancos according to Frac company proposal with 7000 psi max.
20. Frac should be a hybrid design of slick water, linear gel, and complex gel and multiple sand sizes.
21. Flowback and test Mancos zone with Green completion unit down sales line.
22. Repeat procedure for second Mancos zone by TOOH with tbg and pkr and set a bridge plug.
23. RU perforating company and perforate Mancos formation 3 shots per location with a 3 3/8" select fire gun with a 10 gram charge for a .34 hole and 21" penetration. See Perforation Plan Sheet.
24. TIH w/Pkr on 3 1/2" workstring and repeat procedure.

Rosa Unit #146B
Well Completion Procedure

1. CLEAN UP:

1. When finished with last Mancos test, TOO H and LD 3 1/2" work string.
2. PU bit and 2 7/8" N-80 work string and TIH and drill plug(s) between all Mancos zones tested.
3. Flowback and cleanup all Mancos together until formation quits making sand and load water decreases to an acceptable level.
4. Drillout CIBP above Dakota and push to PBTD.
5. Flowback and cleanup all zones together, gauge well, and obtain gas sample.
6. LD 2 7/8" N-80 work string and PU 2 3/8" J-55 production string w/ 1/2 Mule Shoe and SN. Land near btm perf.
7. ND BOP and NU WH.
8. Kick well off up the tubing and down the sales line through the Green Completion Unit.
9. Rig down and move to next well. Leave the Green Completion unit with the production team if necessary.
10. Inspect location and notify Production Team Lead of anything that needs to be done to location (clean-up).

Pre-Job Planning: Notify BLM 24 hrs prior to moving in. Contact team lead to discuss job scope and logistics. Confirm all surface facilities are secure prior to MIRU. Review liner and tubular requirements with Ron Cochran.

Safety Reminders: Safe operations are very important at all Williams Production Company properties and facilities. To further this goal, the wellsite supervisor or rig tool pusher at the location shall request tailgate safety meetings prior to initiation of work and also prior to any critical operations. All company, contract, and service personnel present at the location shall attend these tailgate safety meetings. All parties shall review proposed upcoming steps, procedures, and potentially hazardous situations. Occurrence of these meetings shall be recorded in the Daily Report.

Hold daily safety meetings to discuss job scope and emergency response plans. If the procedure changes or critical tasks are involved revisit safety concerns before continuing work.

Smoking is not allowed except in areas designated by the wellsite supervisor or rig toolpusher. Hard hats and steel toed shoes will be worn on location. Personnel arriving on location shall check in with the wellsite supervisor or rig toolpusher.

EH&S Reminders: Fill out daily pit inspection report and email with Daily Completion Well Report.

Pre-Job Planning and Notes: Notify Production Team Leader a minimum of 48 hours prior to commencing any work and after job is completed.

Lock-out and tag-out surface facilities per Williams E&P Safety Policy and Procedures.

Ensure that rectifier for cathodic protection is turned off before any work is performed. Notify cathodic protection personnel after job is complete so cathodic protection can be re-activated.

Notify BLM 24 hours prior to moving in. Check rig anchors prior to moving on location. Confirm that the reserve pit is ready.

ROSA UNIT #146B
BLANCO MV/BASIN DK

Spud Date 07-15-07
 Completed 10-09-07
 1st Delivered 11-08-07 MV
 11-08-07 DK

Location: 1980' FSL & 800' FWL
 NW/4 SW/4 Section 28(L), T31N, R05W
 Rio Arriba Co., NM

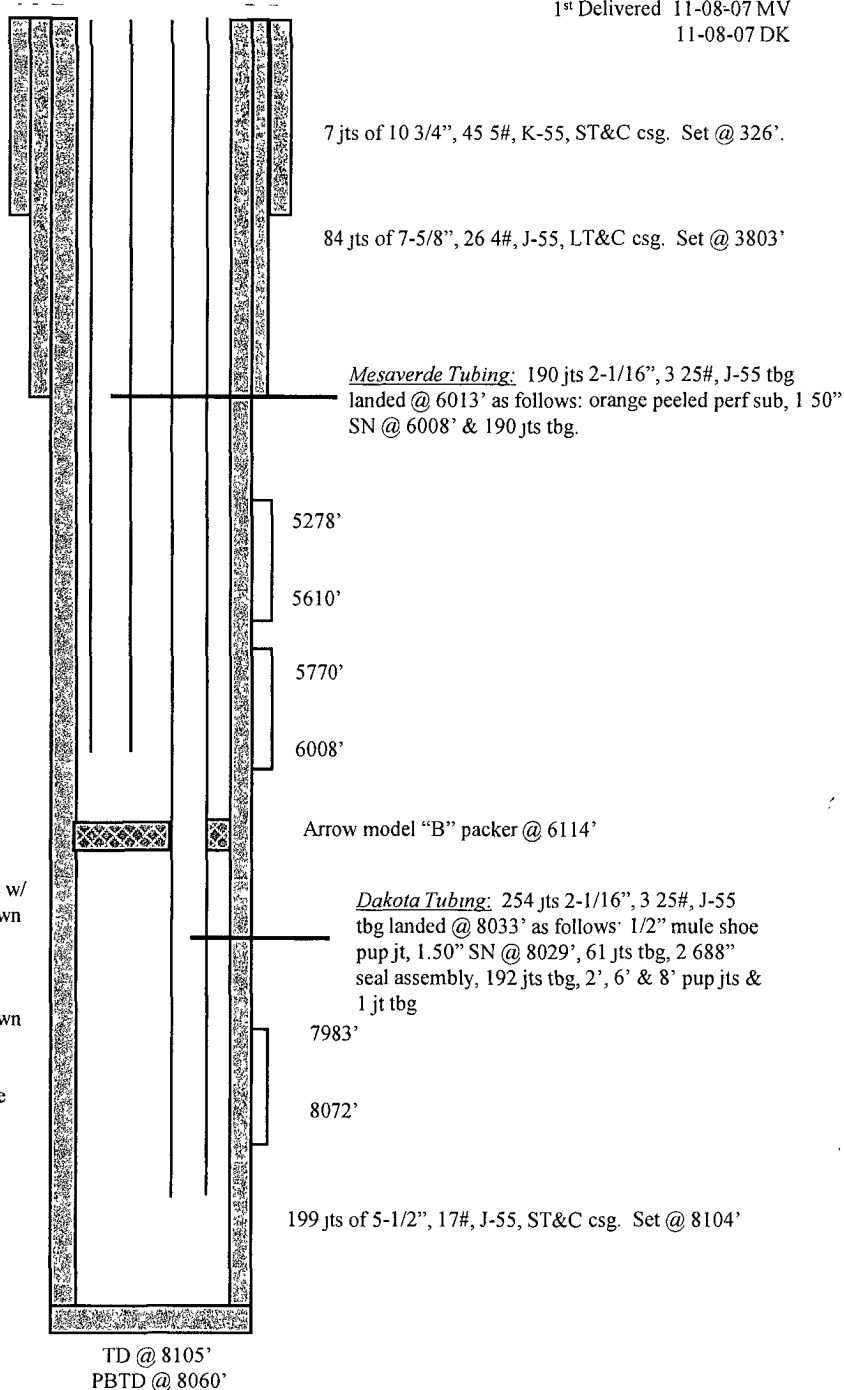
Elevation: 6451' GR 6467' KB
API #: 30-039-29833

<u>Tops</u>	<u>Depth</u>
Kirtland	2727'
Pictured Cliffs	3498'
Cliff House	5516'
Menefee	5560'
Point Lookout	5769'
Mancos	6224'
Dakota	7982'

CliffHouse/Menefee 5278' - 5610' (50, 0 34" holes) Frac w/ 10,140# 14/30 LiteProp 125 followed by 3220# 20/40 brown sand.

Point Lookout 5770' - 6008' (42, 0 34" holes) Frac w/ 10,140# 14/30 LiteProp 125 followed by 3220# 20/40 brown sand.

Dakota 7983' - 8072' (57, 0 34" holes) Frac w/ 9380# Lite Prop 108



<i>HOLE SIZE</i>	<i>CASING</i>	<i>CEMENT</i>	<i>CU. FT.</i>	<i>CMT TOP</i>
14 3/4"	10 3/4", 45.5#	3 14 s xs	443 cu.ft.	surface
9 7/8"	7 5/8", 26.4#	983 s xs	1976 cu.ft.	surface
6 3/4"	5 1/2", 17#	230 s xs	495 cu.ft.	4000'