

RECEIVED

In Lieu of
Form 3160
(June 1990)

UNITED STATES
DEPARTMENT OF INTERIOR
BUREAU OF LAND MANAGEMENT

JUL 29 2010

FORM APPROVED
Budget Bureau No. 1004-0135
Expires: March 31, 1993

Farmington Field Office

SUNDRY NOTICE AND REPORTS ON WELL

Do not use this form for proposals to drill or to deepen or reentry to a different reservoir. Use "APPLICATION TO DRILL" for permit for such proposals

5. Lease Designation and Serial No.
NMSF-078770

6. If Indian, Allottee or Tribe Name

7. If Unit or CA, Agreement Designation
Rosa Unit

8. Well Name and No.
Rosa Unit #186

9. API Well No.
30-039-30160

10. Field and Pool, or Exploratory Area
BLANCO MV/BASIN MC/BASIN DK

11. County or Parish, State
Rio Arriba, New Mexico

SUBMIT IN TRIPLICATE

1. Type of Well
Oil Well ☒ Gas Well ☐ Other ☐

2. Name of Operator
WILLIAMS PRODUCTION COMPANY

3. Address and Telephone No.
PO Box 640 Aztec, NM 87410-0640

4. Location of Well (Footage, Sec., T., R., M., or Survey Description)
1660' FNL & 930' FWL Sec 27, T31N, R5W NMPM

CHECK APPROPRIATE BOX(s) TO INDICATE NATURE OF NOTICE, REPORT, OR OTHER DATA

TYPE OF SUBMISSION

☒ Notice of Intent

☐ Subsequent Report

☐ Final Abandonment

TYPE OF ACTION

Abandonment

Recompletion

Plugging Back

Casing Repair

Altering Casing

☒ Other Multiple zone completion

Change of Plans

New Construction

Non-Routine Fracturing

Water Shut-Off

Conversion to Injection

Dispose Water

(Note: Report results of multiple completion on Well Completion or Recompletion Report and Log form.)

13. Describe Proposed or Completed Operations (Clearly state all pertinent details, and give pertinent dates, including estimated date of starting any proposed work. If well is directionally drilled, give subsurface locations and measured and true vertical depths for all markers and zones pertinent to this work.)*

The Dakota and MesaVerde formations on this well were completed in 2007. The well is presently flowing the MesaVerde and Dakota formations. At this time, Williams plans to move back on this well and complete the Mancos as per the attached procedure. After Mancos completion the formations will be commingled. Sundries for commingle authorization will be filed at a later date. Also attached is an updated plat showing all three formations.

RCVD AUG 2 '10
OIL CONS. DIV.

DIST. 3

14. I hereby certify that the foregoing is true and correct

Signed

Heather Riley

Title Regulatory Specialist

Date 7/29/2010

(This space for Federal or State office use)

Original Signed: Stephen Mason

Approved by

Title

Date

JUL 30 2010

Conditions of approval, if any:

Title 18 U.S.C. Section 1001, makes it a crime for any person knowingly and willfully to make to any department or agency of the United States any false, fictitious or fraudulent statements or representations as to any matter within its jurisdiction.

NMOCD

District I
1625 N. French Dr., Hobbs, NM 88240

District II
1301 W. Grand Avenue, Artesia, NM 88210

District III
1000 Rio Brazos Rd., Aztec, NM 87410

District IV
1220 S. St. Francis Dr., Santa Fe, NM 87505

State of New Mexico
Energy, Minerals & Natural Resources Department

OIL CONSERVATION DIVISION
1220 South St. Francis Dr.
Santa Fe, NM 87505

Form C-102
Revised October 12, 2005
Instructions on back
Submit to Appropriate District Office
State Lease - 4 Copies
Fee Lease - 3 Copies

☐ AMENDED REPORT

WELL LOCATION AND ACREAGE DEDICATION PLAT

¹ API Number	² Pool Code	³ Pool Name
72319 / 71599 / 97232	BLANCO MESAVERDE / BASIN DAKOTA / BASIN MANCOS	
⁴ Property Code	⁵ Property Name	⁶ Well Number
17033	ROSA UNIT	186
⁷ OGRID No.	⁸ Operator Name	⁹ Elevation
120782	WILLIAMS PRODUCTION COMPANY	6765'

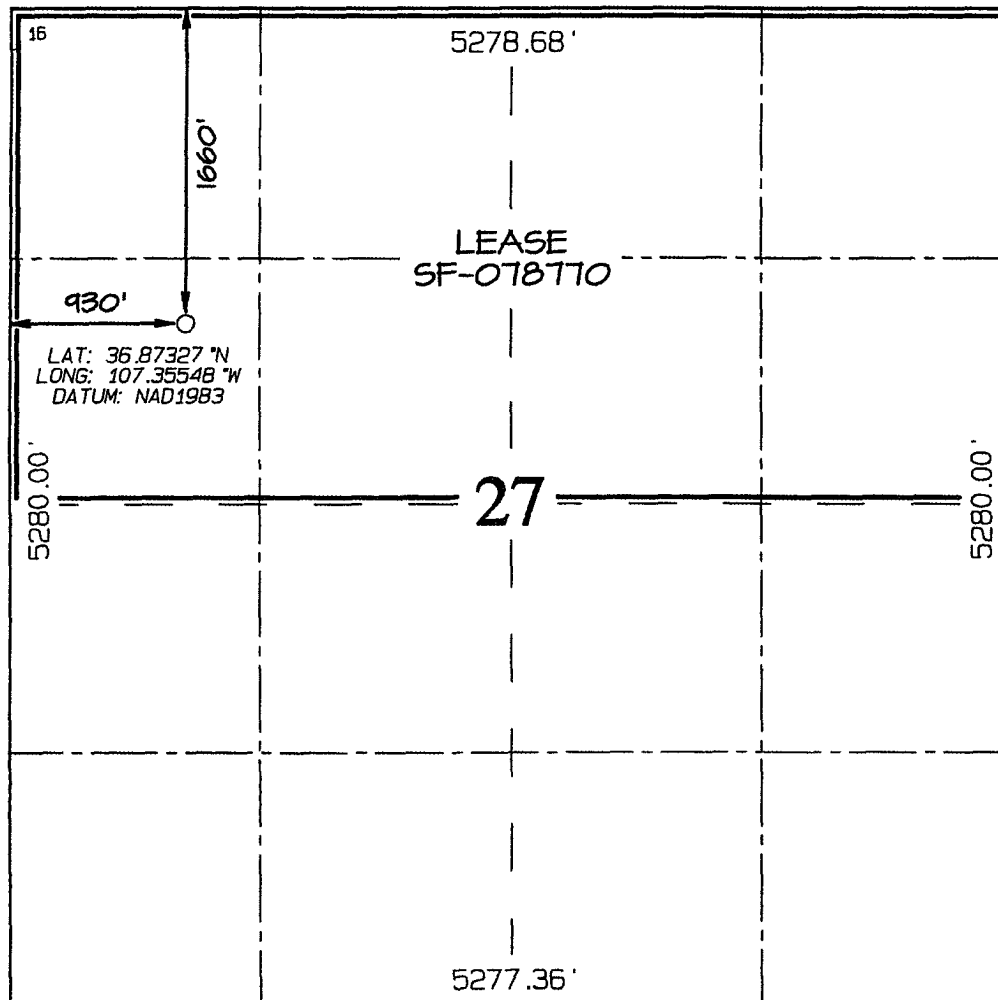
¹⁰ Surface Location

UL or lot no.	Section	Township	Range	Lot Idn	Feet from the	North/South line	Feet from the	East/West line	County
E	27	31N	5W		1660	NORTH	930	WEST	RIO ARriba

¹¹ Bottom Hole Location If Different From Surface

UL or lot no.	Section	Township	Range	Lot Idn	Feet from the	North/South line	Feet from the	East/West line	County
¹² Dedicated Acres	¹³ Joint or Infill				¹⁴ Consolidation Code	¹⁵ Order No.			
320.0 Acres - (N/2)									

NO ALLOWABLE WILL BE ASSIGNED TO THIS COMPLETION UNTIL ALL INTERESTS HAVE BEEN CONSOLIDATED
OR A NON-STANDARD UNIT HAS BEEN APPROVED BY THE DIVISION



¹⁷ OPERATOR CERTIFICATION

I hereby certify that the information contained herein is true and complete to the best of my knowledge and belief, and that this organization either owns a working interest or unleased mineral interest in the land including the proposed bottom-hole location or has a right to drill this well at this location pursuant to a contract with an owner of such a mineral or working interest, or to a voluntary pooling agreement or a compulsory pooling order heretofore entered by the division.

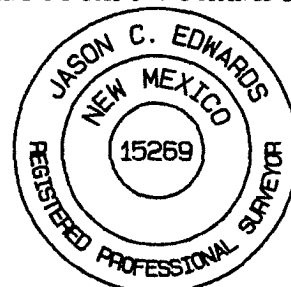
Heather Riley 7/22/10
Signature Date
Heather Riley
Printed Name

¹⁸ SURVEYOR CERTIFICATION

I hereby certify that the well location shown on this plat was plotted from field notes of actual surveys made by me or under my supervision, and that the same is true and correct to the best of my belief.

Date Revised: JULY 25, 2010
Date of Survey: MAY 4, 2006

Signature and Seal of Professional Surveyor



JASON C. EDWARDS
Certificate Number 15269



EXPLORATION & PRODUCTION

RECOMPLETE MANCOS

ROSA UNIT #186
RIO ARriba, NEW MEXICO
AUGUST 2010

WELLBORE STATUS:

PBTD 8419' MD 8434'

2-1/16", 3.25#/FT, J-55 IJ To 6412' KB--- MESA VERDE COMPLETION

2-1/16", 3.25#/FT, J-55 To 8408' KB--- DAKOTA COMPLETION

5-1/2" 17# N-80 LT&C CSG @ 8433'

ARROW MODEL "B" PACKER @ 6480'

Objective: PULL DUAL COMPLETION, RECOMPLETE MANCOS AND COMMINGLE.

- 1) MIRU, kill well.
- 2) NDWH & NUBOP
- 3) TOO H w/ tubing and packer.
- 4) RIH w/ bridge plug set above Dakota.
- 5) Perf lower Mancos zone.
- 6) RIH w/ frac strg and packer.
- 7) Set packer between perf intervals.
- 8) Frac 1st stage
- 9) TOH w/ packer and frac strg
- 10) Set plug between zones and perf upper.
- 11) TIH w/ packer and frac strg set above upper zone.
- 12) frac 2nd stage
- 13) TOH w/ frac strg and packer.
- 14) Drill out bridge plugs.
- 15) TIH and land production tbg.
- 16) Return to production as commingled well.

PRIOR TO PRIMARY JOB

- 1) Have 12 Frac Tanks filled with clean fresh water with 2% KCl (may use filtered produced water for only Pad and slick water portion of frac). Add biocide while filling.
- 2) Test rig anchors.
- 3) Verify location is OK for rig operations.
- 4) Ensure JSA, ECP's and lockout procedures are in place for the flowline and other energized piping or equipment.

SAFETY NOTICE

PERSONNEL SAFETY IS THE NUMBER ONE JOB.

NO EXCEPTIONS!!!

**PLEASE FOLLOW APPROPRIATE WILLIAMS CONTRACTOR PROTOCOLS FOR THIS
JOB PLAN**

Please see your Williams Business Representative if you have any questions; Contractor protocols can be located in the Williams E&P Contractor Guide

PROCEDURE:

Note: A safety meeting shall be held each morning before work and subsequent "tailgate" safety meetings are to be held during the day when operation objectives shift in nature and intent (i.e. beginning/ending fishing operations, squeeze jobs, rigging down, etc.) Please ensure these are documented per section 2.2.7 of the Williams E&P Contractor Guide

1. Spot equipment, MIRU.
2. Blow down well.

Note: Steps 2 is to be performed each day before work begins and as necessary throughout the workday (with expected departure(s) when tubing is out of the hole).

3. ND tree and NU BOP's (blind & pipe rams).
4. Test BOP's for operation and have shop test report for pressure on location.

Note: Step 4 is to be performed each time BOP stack is nipped up.

5. TOOH and LD prod tbg.
6. PU Packer plucker to remove model "D" packer set at 8330'
7. After removing packer make a bit and scraper run to clean out casing.
8. Set CompBP above Dakota.
9. RU perforating company and perforate lower Mancos zones.
10. TIH w/ 3-1/2" N-80 Frac string tbg and Packer. Set Packer above Mancos zones.
11. Load annulus with water (MV was squeezed it may not hold a full column of fluid).
12. Load tbg w/ 2% KCl wtr.
13. Frac lower Mancos according to Frac company proposal.
14. Unseat packer and TOH
15. Set comp BP between zones to isolate lower Mancos
16. RU perforating company and perforate upper Mancos zones.
17. TIH with packer and frac strg.
18. Frac upper Mancos according to Frac company proposal.
19. Unseat packer TOH.
20. RIH with workstring drillout CompBP.
21. TOH with workstring.

ATTENTION

Only use pipe dope on the pins. Do not dope the couplings. If pipe dope gets on the exterior of the couplings or the pipe it should be wiped clean from the pipe or coupling. Do not use excess pipe dope and only dope the threads on the pins.

22. RIH w/ completion string, MU 1/2 mule shoe, seat nipple w/ standing valve.
23. Hang off tubing @ 8,380'.

Note: This well should be dead and the BOP's shall be closed and locked at the end of daily operations.

24. Ensure tubing is not plugged prior to releasing the rig
25. N/D BOP's and N/U wellhead.
26. Return well to production.
27. R/D, move off location.