

UNITED STATES  
DEPARTMENT OF THE INTERIOR  
BUREAU OF LAND MANAGEMENT

Sundry Notices and Reports on Wells

1. Type of Well  
GAS
2. Name of Operator  
**BURLINGTON**  
RESOURCES OIL & GAS COMPANY LP
3. Address & Phone No. of Operator  
PO Box 4289, Farmington, NM 87499 (505) 326-9700
4. Location of Well, Footage, Sec., T, R, M  
900' FSL, 790' FWL, Sec.16, T-26-N, R-2-W, NMPM
5. Lease Number  
NMNM-4447
6. If Indian, All. or  
Tribe Name
7. Unit Agreement Name
8. Well Name & Number  
Ojito #1
9. API Well No.  
30-039-20349
10. Field and Pool  
Gavilan Chacra
11. County and State  
Rio Arriba Co, NM

12. CHECK APPROPRIATE BOX TO INDICATE NATURE OF NOTICE, REPORT, OTHER DATA

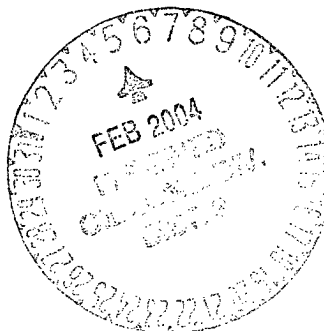
Type of Submission

Type of Action

- |                                                      |                                                 |                                                  |
|------------------------------------------------------|-------------------------------------------------|--------------------------------------------------|
| <input checked="" type="checkbox"/> Notice of Intent | <input checked="" type="checkbox"/> Abandonment | <input type="checkbox"/> Change of Plans         |
| <input type="checkbox"/> Subsequent Report           | <input type="checkbox"/> Recompletion           | <input type="checkbox"/> New Construction        |
| <input type="checkbox"/> Final Abandonment           | <input type="checkbox"/> Plugging Back          | <input type="checkbox"/> Non-Routine Fracturing  |
|                                                      | <input type="checkbox"/> Casing Repair          | <input type="checkbox"/> Water Shut off          |
|                                                      | <input type="checkbox"/> Altering Casing        | <input type="checkbox"/> Conversion to Injection |
|                                                      | <input type="checkbox"/> Other -                |                                                  |

13. Describe Proposed or Completed Operations

It is intended to plug and abandon the subject well according to the attached procedure and wellbore diagram.



14. I hereby certify that the foregoing is true and correct.

Signed [Signature] (JPM3) Title Regulatory Supervisor Date 8/22/03

(This space for Federal or State Office use) Division of Multi-Resources  
APPROVED BY /s/ Adam M. Salameh Title \_\_\_\_\_ Date FEB 2 2004  
CONDITION OF APPROVAL, if any: PLEASE SEE ATTACHED CONDITIONS

## CONDITIONS OF APPROVAL FOR PERMANENT ABANDONMENT

Operator: Burlington Resources Well Name: Ojito #1  
Well Location: 900' FSL & 790' FWL, Sec. 16, T26N, R2W  
 Rio Arriba, New Mexico

1. Plugging operations authorized are subject to the "General Requirements for Permanent Abandonment of Wells on Federal Leases."
2. For wells on Federal leases, Al Yepa with the Cuba Field Office is to be notified at least 24 hours (48 hours if possible) before the plugging operations commence. His phone number is (505) 289-3748. Office hours are 7:45 a.m. to 4:30 p.m.

For wells on Jicarilla leases notify Bryce Hammond with the Jicarilla Apache Tribe at least 24 hours (48 hours if possible) before the plugging operations commence. His phone number is (505) 759-3485.

3. Blowout prevention equipment is required.
4. The proposed first CIBP must be set within 50 feet to 100 feet above the open perforations, at about 7200 feet.
5. Within 30 days following completion of the well abandonment, you must file with this BLM office a Subsequent Report of Abandonment on Form 3160-5.

# Ojito #1

Chacra

900' FSL, 790' FWL

Unit M, Section 16, T026N, R02W

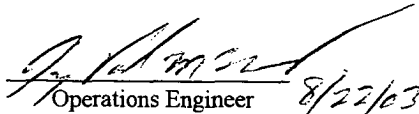
Latitude: N36° 28.794', Longitude: W107° 3.678'

DPNO: 5510102

Plug and Abandonment Procedure 8/20/2003

- Note: All cement volumes use 100% excess outside pipe and 50' excess inside pipe. The stabilizing wellbore fluid will be 8.3 ppg, sufficient to balance all exposed formation pressures. All cement will be ASTM Type II, mixed at 15.6 ppg with a 1.18 cf/sx yield.
1. Install and test location rig anchors. Prepare blow pit. Comply with all NMOC, BLM, and Burlington Resources safety regulations. Conduct safety meeting for all personnel on location. MOL and RU daylight pulling unit. NU relief line and blow down well. Kill well with water as necessary. ND wellhead and NU BOP. Test BOP.
  2. TOH with 152 joints 2-3/8" tubing, total 4780'. Visually inspect, if necessary use a workstring. Round-trip 4-1/2" gauge ring or casing scraper to 4645'.
  3. **Plug #1 (Chacra perforations, 4645' - 4595')**: TIH and set a 4-1/2" cement retainer at 4645'. Pressure test the tubing to 1000#. Load casing with water and circulate well clean. Pressure test the casing to 500#. If casing does not test, then spot or tag subsequent plugs as appropriate. Mix 12 sxs cement and spot a balanced plug inside casing above the CR to isolate the Chacra perforations. TOH with tubing.
  4. **Plug #2 (Pictured Cliffs top, 3915' - 3815')**: Perforate 3 squeeze holes at 3915'. Attempt to establish rate into squeeze holes if the casing pressure tested. Set 4-1/2" cement retainer at 3865'. Establish rate into squeeze holes. Mix and pump 36 sxs cement, squeeze 24 sxs outside the casing and leave 12 sxs inside casing. PUH to 3460'.
  5. **Plug #3 (Fruitland top, 3460' - 3360')**: Mix 12 sxs cement and spot a balanced plug inside casing to cover the Fruitland top. TOH with tubing.
  6. **Plug #4 (Kirtland and Ojo Alamo tops, 2665' - 2390')**: Perforate 3 squeeze holes at 2665'. Attempt to establish rate into squeeze holes if the casing pressure tested. Set 4-1/2" cement retainer at 2615'. Establish rate into squeeze holes. Mix and pump 90 sxs cement, squeeze 65 sxs outside the casing and leave 25 sxs inside casing. TOH with tubing.
  7. **Plug #5 (Nacimiento top, 1260' - 1160')**: Perforate 3 squeeze holes at 1260'. Attempt to establish rate into squeeze holes if the casing pressure tested. Set 4-1/2" cement retainer at 1210'. Establish rate into squeeze holes. Mix and pump 36 sxs cement, squeeze 24 sxs outside the casing and leave 12 sxs inside casing. TOH and LD tubing.
  8. **Plug #6 (8-5/8" Surface casing, 200' - Surface)**: Perforate 3 squeeze holes at 200'. Establish circulation out the bradenhead valve with water. Mix and pump approximately 65 sxs cement down the 4-1/2" casing to circulate good cement out bradenhead valve. Shut well in and WOC.
  9. ND BOP and cut off casing below surface. Install P&A marker with cement to comply with regulations. RD, move off location, cut off anchors and restore location.

Recommended:

  
Operations Engineer 8/22/03

Approved:

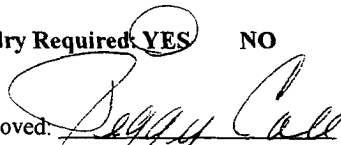
 8/22/03  
Drilling Superintendent

Engineer:

Jay Paul McWilliams  
Office: 324-6146  
Cell: 320-2586

Sundry Required: **YES** NO

Approved:

 8-22-03  
Regulatory Approval

Lease Operator:

Larry Nelson

Cell: 320-2570

Pager: 326-8470

Specialist:

Jim Work

Cell: 320-2447

Pager: 324-7721

Foreman:

Darren Randall

Office: 326-9808

Cell: 320-2618

JPM/kao

# Ojito #1

## Proposed P&A

AIN #5510102

Gavillan Chacra

SW, Section 16, T-26-N, R-02-W, Rio Arriba County, NM

Lat: N: 36°28.794 / Long: 107°3.678, API #30-039-20349

Today's Date: 8/20/03

Spud: 12/26/70

MV Completed: 2/17/71

CH Completed: 8/6/91

Elevation: 7234' GL  
7245' KB

12-1/4" hole

Nacimiento @ 1210'

Ojo Alamo @ 2440'

Kirtland @ 2615'

Bond from casing squeeze from  
3450' to 3650' (1991 CBL)

Fruitland @ 3410'

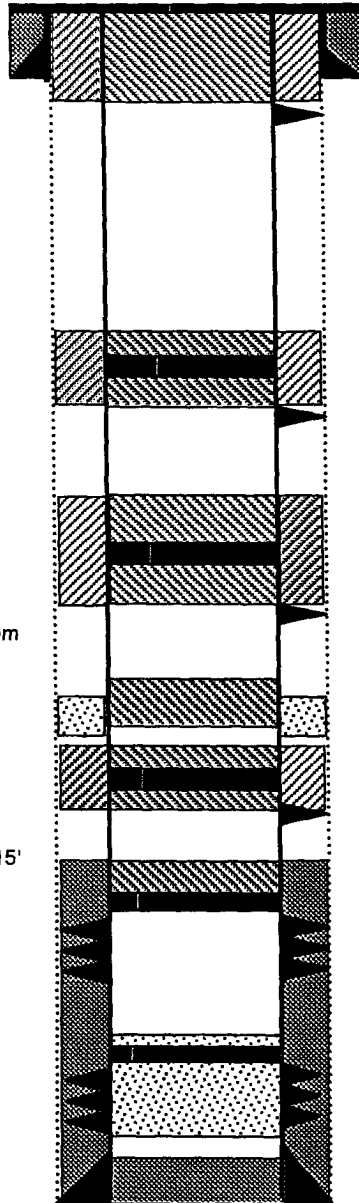
Pictured Cliffs @ 3865'

Casing leaks from 4714' to 3515'  
squeezed with 100 sxs (1991)

Chacra @ 4695'

Mesaverde @ 5464'

6-3/4" Hole



TD 6025'  
PBTD 5980'

8-5/8" 20# Casing set @ 150'  
Cement with 100 sxs (Circulated to Surface)

Perforate @ 200'

Plug #6: 200' - Surface  
Cement with 65 sxs

Cmt Retainer @ 1210'

Perforate @ 1260'

Plug #5: 1260' - 1160'  
Cement with 36 sxs, 24  
outside and 12 inside

Cmt Retainer @ 2615'

Perforate @ 2665'

Plug #4: 2665' - 2390'  
Cement with 90 sxs, 65  
outside and 25 inside

Cmt Retainer @ 3865'

Perforate @ 3915'

Plug #3: 3460' - 3360'  
Cement with 12 sxs

Plug #2: 3915' - 3815'  
Cement with 36 sxs, 24  
outside and 12 inside

TOC @ 4350' (T.S.) & 4450' (CBL 1991)

Set Cmt Retainer @ 4645'

Chacra Perforations:  
4695' - 4811'

Plug #1: 4645' - 4595'  
Cement with 12 sxs

P&A MV: CR at 5387' with unknown sxs  
cement below and 5 sxs above (1991)

Mesaverde Perforations:  
5490' - 5904'

4-1/2" 10.5# Casing set @ 6022'  
Cement with 250 sxs

# Ojito #1

Current

AIN #5510102

Gavillan Chacra

SW, Section 16, T-26-N, R-2-W, Rio Arriba County, NM

Lat: N: 36°28.794 / Long: 107°3.678, API #30-039-20349

Today's Date: 8/20/03

Spud: 12/26/70

MV Completed: 2/17/71

CH Completed: 8/6/91

Elevation: 7234' GL  
7245' KB

Nacimiento @ 1210'

Ojo Alamo @ 2440'

Kirtland @ 2615'

Fruitland @ 3410'

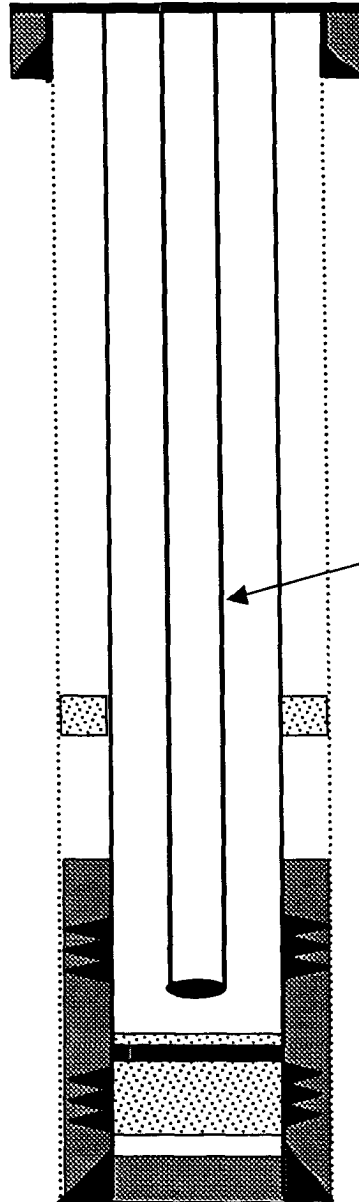
Pictured Cliffs @ 3865'

Chacra @ 4695'

Mesaverde @ 5464'

12-1/4" hole

6-3/4" Hole



8-5/8" 20# Casing set @ 150'  
Cement with 100 sxs (Circulated to Surface)

## WELL HISTORY

Jul '91: MV P&A & Chacra completion: Set CR at 5387', squeeze MV perfs with unknown sxs and spot 5 sxs above. Isolate casing leaks from 4714' to 3515', sqz with 100 sxs, DO. Ran CBL with TOC at 4450' and bond from 3450' to 3650'. Perforate and frac Chacra zone. Land tubing.

2-3/8" Tubing set at 4780'  
(152 joints with SN at 4758')

Bond from casing squeeze from  
3450' to 3650' (1991 CBL)

Casing leaks from 4714' to 3515'  
squeezed with 100 sxs (1991)

TOC @ 4350' (T.S.) & 4450' (CBL 1991)

Chacra Perforations:  
4695' - 4811'

P&A MV: CR at 5387' with unknown sxs  
cement below and 5 sxs above (1991)

Mesaverde Perforations:  
5490' - 5904'

4-1/2" 10.5# Casing set @ 6022'  
Cement with 250 sxs

TD 6025'  
PBTD 5980'