

Submit 1 Copy To Appropriate District
Office
District I
1625 N French Dr, Hobbs, NM 88240
District II
1301 W Grand Ave, Artesia, NM 88210
District III
1000 Rio Brazos Rd, Aztec, NM 87410
District IV
1220 S St Francis Dr, Santa Fe, NM 87505

State of New Mexico
Energy, Minerals and Natural Resources

Form C-103
October 13, 2009

OIL CONSERVATION DIVISION
1220 South St. Francis Dr.
Santa Fe, NM 87505

SUNDRY NOTICES AND REPORTS ON WELLS (DO NOT USE THIS FORM FOR PROPOSALS TO DRILL OR TO DEEPEN OR PLUG BACK TO A DIFFERENT RESERVOIR USE "APPLICATION FOR PERMIT" (FORM C-101) FOR SUCH PROPOSALS)		WELL API NO. 30-045-35172
1. Type of Well: Oil Well <input type="checkbox"/> Gas Well <input checked="" type="checkbox"/> Other CLASS II INJECTION		5. Indicate Type of Lease STATE <input type="checkbox"/> FEE <input checked="" type="checkbox"/>
2. Name of Operator WGR Asset Holding Company, LLC		6. State Oil & Gas Lease No.
3. Address of Operator #99 County Rd. 6500, Kirtland NM 87417		7. Lease Name or Unit Agreement Name PATHFINDER AGI
4. Well Location Unit Letter ___ Unit F ___: 1650 feet from the North line and 2260 feet from the West line Section 1 Township 29N Range 15N NMPM County San Juan		8. Well Number 001
11. Elevation (Show whether DR, RKB, RT, GR, etc) 5316 ft RKB		9. OGRID Number 273264
		10. Pool name or Wildcat Entrada

12. Check Appropriate Box to Indicate Nature of Notice, Report or Other Data

NOTICE OF INTENTION TO:

PERFORM REMEDIAL WORK ☐ PLUG AND ABANDON ☐
TEMPORARILY ABANDON ☐ CHANGE PLANS ☐
PULL OR ALTER CASING ☐ MULTIPLE COMPL ☐
DOWNHOLE COMMINGLE ☐

OTHER ☐

SUBSEQUENT REPORT OF:

REMEDIAL WORK ☐ ALTERING CASING ☐
COMMENCE DRILLING OPNS ☐ P AND A ☐
CASING/CEMENT JOB ☒

RCVD AUG 27 '10

OIL CONS. DIV.
DIST. 3

OTHER ☐

13. Describe proposed or completed operations. (Clearly state all pertinent details, and give pertinent dates, including estimated date of starting any proposed work). SEE RULE 19.15.7.14 NMAC. For Multiple Completions: Attach wellbore diagram of proposed completion or recompletion.

On 8/23/10 the 5 1/2" 17.0 ppg, L80, LTC casing was cemented in place at 6,602 ft RKB by Halliburton Services. (See attached Cement Job Report)

Stage 1: Pumped 10 bbls FW, 30 bbls FE2 spacer, 88.3 bbls (570sx) THERMALOCK cement at 15.5 ppg, w/ 0.87 yld, with 3.33 g/sx FW, 50.5 bbls FE2 water, and 101 bbls mud. Did not bump plug after pumping 151.5 bbls casing volume displacement. Floats held ok. Full returns with Stage 1.

Drop DV bomb, wait 20 minutes. Open DV Tool with 1150 psi. Circulated 30 bbls mud with cement pump, then lost returns. Pumped additional 50 bbls and got partial returns. Continued pumping est. 700-900 bbls with partial returns. Circulated approximately 37 bbls Thermalock to pit. Total WOC time for Stage 1 was 6.5 hrs.

Stage 2: Pumped 20 bbls mud flush, 570 sx (194 bbls) Halliburton Light Lead at 12.3 ppg / 1.91 yld, and 110 sx (24 bbls) Type V Tail at 15.5 ppg / 1.2 yld. Dropped closing plug and displaced with 50 bbls FW and then lost returns. Pumped additional 61 bbls and bumped plug at 750 psi. Pressure increased to 2550 psi, held ok. (Pressure test of casing was conducted on August 27, 2010. Casing was pressured up to 500 psi and pressure held for full 30 minutes with no more than a 10% deviation (see attached charts). Cement Bond Log will be conducted at a later date prior to full completion.)

Spud Date:

8/8/2010

Rig Release Date:

8/25/2010

I hereby certify that the information above is true and complete to the best of my knowledge and belief.

SIGNATURE

Kent McEvers

TITLE Operator

DATE 8/27/2010

Type or print name Kent McEvers

E-mail address: Kent.McEvers@Anadarko.com PHONE: 505-598-5601

For State Use Only

Deputy Oil & Gas Inspector,

District #3

SEP 13 2010

APPROVED BY:

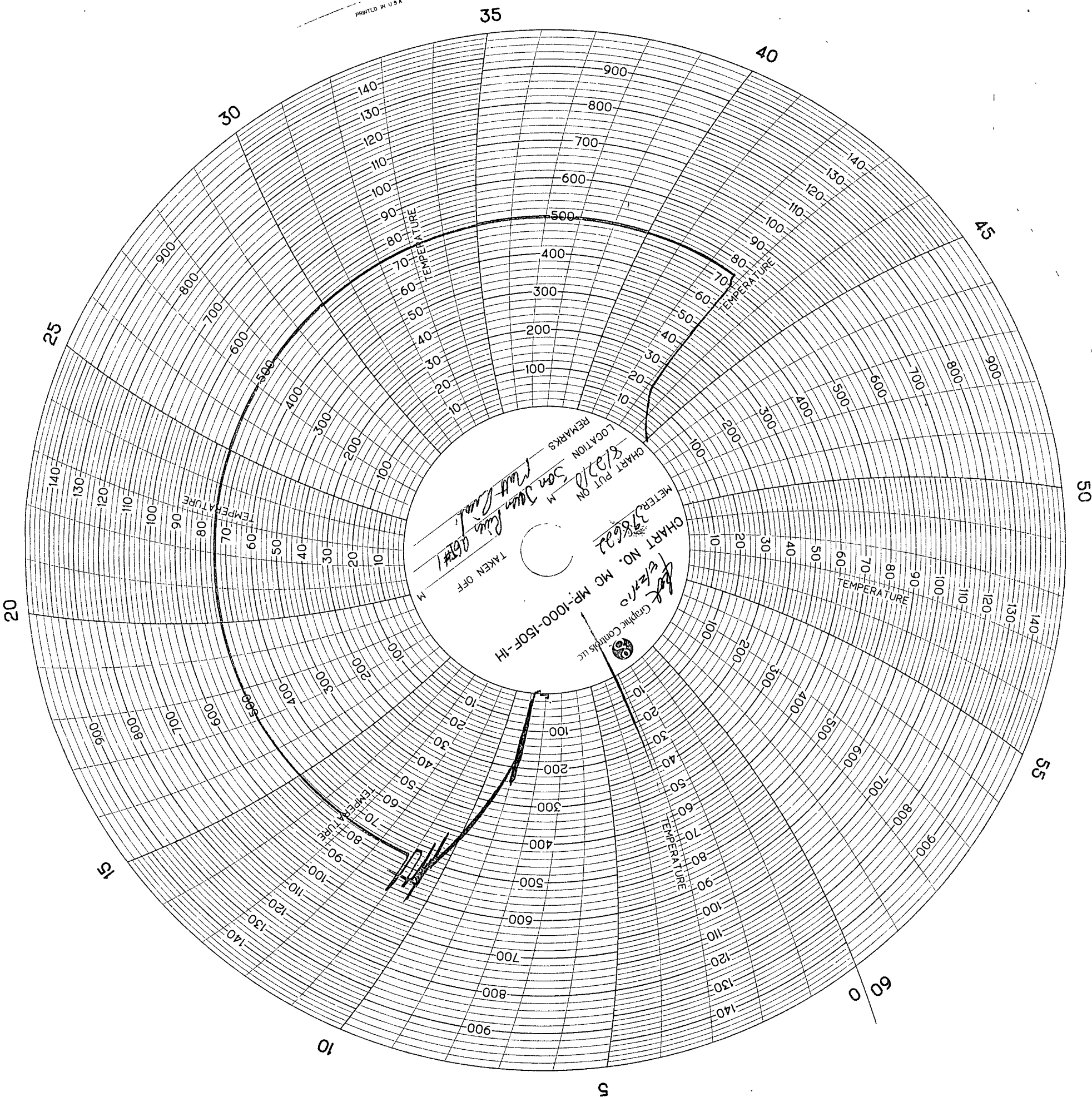
Kent McEvers

TITLE

DATE

Conditions of Approval (if any):

CONDUCT NEW PRESSURE TEST TO MEET REQUIREMENT OF NMACO RULE



ANADARKO PETROLEUM CORP - EBUS

Pathfinder AGI 1

San Juan County , New Mexico

Cement Multiple Stages

23-Aug-2010

Job Site Documents

HALLIBURTON**Cementing Job Summary***The Road to Excellence Starts with Safety*

Sold To #: 300466		Ship To #: 2800220		Quote #:		Sales Order #: 7576385	
Customer: ANADARKO PETROLEUM CORP - EBUS				Customer Rep:			
Well Name: Pathfinder AGI		Well #: 1		API/UWI #:			
Field:		City (SAP): KIRTLAND		County/Parish: San Juan		State: New Mexico	
Legal Description: Section 1 Township 29S Range 15W							
Contractor: AZTEC WELL SERVICE		Rig/Platform Name/Num: AWS 673					
Job Purpose: Cement Multiple Stages							
Well Type: Development Well		Job Type: Cement Multiple Stages					
Sales Person: FLING, MATTHEW		Srvc Supervisor: RICHESIN, ANTHONY			MBU ID Emp #: 412961		
Job Personnel							
HES Emp Name	Exp Hrs	Emp #	HES Emp Name	Exp Hrs	Emp #	HES Emp Name	Exp Hrs
BROST, ROBERT W	21	394382	BURNS, SHAUN R	10	275991	JONES, DAVID Michael	21
MASON, KYLE T	21	426148	RICHESIN, ANTHONY Ray	26	412961	NATE LAMBSON	21
Equipment							
HES Unit #	Distance-1 way	HES Unit #	Distance-1 way	HES Unit #	Distance-1 way	HES Unit #	Distance-1 way
10025031	15 mile	10025104	15 mile	10793626	15 mile	10829467	15 mile
Job Hours							
Date	On Location Hours	Operating Hours	Date	On Location Hours	Operating Hours	Date	On Location Hours
8/22/10	1	0	8/23/10	20	14		
TOTAL		Total is the sum of each column separately					
Job				Job Times			
Formation Name						Date	Time
Formation Depth (MD)	Top	Bottom			Called Out	22 - Aug - 2010	19:00
Form Type	BHST		155 degF	On Location	22 - Aug - 2010	23:00	MST
Job depth MD	6608. ft	Job Depth TVD	6608. ft	Job Started	23 - Aug - 2010	06:30	MST
Water Depth	Wk Ht Above Floor		6. ft	Job Completed	23 - Aug - 2010	18:28	MST
Perforation Depth (MD)	From	To	Departed Loc		23 - Aug - 2010	20:00	MST
Well Data							
Description	New / Used	Max pressure psig	Size in.	ID in	Weight lbm/ft	Thread	Grade
7 7/8" Production Open Hole				7.875			
Multiple Stage Cementer							
5 1/2" Production Casing	Unknown		5.5	4.95	15.5		L-80
8 5/8" Surface Casing	Unknown		8.625	8.097	24		J-55
Sales/Rental/3rd Party (HES)							
Description	Qty	Qty uom	Depth	Supplier			
SHOE,FLOAT,5 1/2 8RD,2 3/4 SUPER SEAL	1	EA					
CLR,FLT,5-1/2 8RD,14-23PPF,2-3/4	1	EA					
CLAMP - LIMIT - 5-1/2 - HINGED --	1	EA					
KIT,HALL WELD-A	2	EA					
CTRZR ASSY,API,5 1/2 CSG X 8 3/4 H,HNGD	25	EA					
CMTR,TY P ES,5-1/2 LG 8RD,17-23 LBS	1	EA					
PLUG SET - FREE FALL - 5-1/2 8RD &	1	EA					
MILEAGE FOR CEMENTING CREW,ZI	25	MI					
FE-2	300	LB					

HALLIBURTON**Cementing Job Summary**

Tools and Accessories													
Type	Size	Qty	Make	Depth	Type	Size	Qty	Make	Depth	Type	Size	Qty	Make
Guide Shoe					Packer					Top Plug			
Float Shoe					Bridge Plug					Bottom Plug			
Float Collar					Retainer					SSR plug set			
Insert Float										Plug Container			
Stage Tool										Centralizers			

Miscellaneous Materials															
Gelling Agt.	Conc	Surfactant	Conc	Acid Type	Qty	Conc	%	Treatment Fld	Conc	Inhibitor	Conc	Sand Type	Size	Qty	%

Fluid Data									
Stage/Plug #: 1									
Fluid #	Stage Type	Fluid Name	Qty	Qty uom	Mixing Density lbm/gal	Yield ft ³ /sk	Mix Fluid Gal/sk	Rate bbl/min	Total Mix Fluid Gal/sk
1	Water		10.00	bbl		.0	.0	.0	
2	TUNED SPACER	TUNED SPACER - SBM (13256)	30.00	bbl	10.5	.0	.0	.0	
	35.6 gal/bbl	FRESH WATER							
	86 lbm/bbl	BAROID 41 - 50 LB BAG (478095)							
	1 lbm/bbl	D-AIR 3000 (101007446)							
3	Water		10.00	bbl		.0	.0	.0	
4	THERMALOCK CEMENT	CORROSACEM (TM) SYSTEM (452967)	570.0	sacks	15.5	.87	3.33		3.33
	0.05 %	BARAZAN D - 25 LB BAG (201616)							
	3.325 Gal	FRESH WATER							
5	DISPLACEMENT		151.00	bbl	8.34	.0	.0	.0	

Stage/Plug #: 2									
Fluid #	Stage Type	Fluid Name	Qty	Qty uom	Mixing Density uom	Yield uom	Mix Fluid uom	Rate uom	Total Mix Fluid uom
1	MUD FLUSH	MUD FLUSH - ZI - SBM (13383)	20.00	bbl	8.4	.0	.0	.0	
2	Halliburton Light Standard	HALLIBURTON LIGHT STANDARD - SBM (12313)	570.0	sacks	12.3	1.91	10.22		10.22
	0.1 %	HR-5, 50 LB SK (100005050)							
	0.2 %	HALAD(R)-322, 50 LB (100003646)							
	0.2 %	HALAD(R)-344, 50 LB (100003670)							
	10.215 Gal	FRESH WATER							
3	Standard Cement Type V	CMT - STANDARD - TYPE II CEMENT (100064006)	110.0	sacks	15.5	1.2	5.36		5.36
	94 lbm	CEMENT STANDARD TYPE V, BULK (101394863)							
	0.2 %	HALAD(R)-344, 50 LB (100003670)							
	0.2 %	HALAD(R)-322, 50 LB (100003646)							
	0.1 %	HR-5, 50 LB SK (100005050)							
	5.359 Gal	FRESH WATER							

HALLIBURTON**Cementing Job Summary**

Stage/Plug #: 2									
Fluid #	Stage Type	Fluid Name	Qty	Qty uom	Mixing Density lbm/gal	Yield ft ³ /sk	Mix Fluid Gal/sk	Rate bbl/min	Total Mix Fluid Gal/sk
4	Displacement		116.00	bbl	8.34	.0	.0	.0	
Calculated Values		Pressures		Volumes					
Displacement	151.5	Shut In: Instant	0	Lost Returns	65	Cement Slurry	217.3	Pad	
Top Of Cement		5 Min		Cement Returns	0	Actual Displacement	116	Treatment	
Frac Gradient		15 Min		Spacers	0	Load and Breakdown		Total Job	643
Rates									
Circulating	5	Mixing	5	Displacement	4	Avg. Job	4		
Cement Left In Pipe	Amount	76 ft	Reason	Shoe Joint					
Frac Ring # 1 @	ID	Frac ring # 2 @	ID	Frac Ring # 3 @	ID	Frac Ring # 4 @	ID		
The Information Stated Herein Is Correct				Customer Representative Signature					

HALLIBURTON**Cementing Job Log***The Road to Excellence Starts with Safety*

Sold To #: 300466		Ship To #: 2800220		Quote #:		Sales Order #: 7576385	
Customer: ANADARKO PETROLEUM CORP - EBUS				Customer Rep:			
Well Name: Pathfinder AGI			Well #: 1		API/UWI #:		
Field:		City (SAP): KIRTLAND		County/Parish: San Juan		State: New Mexico	
Legal Description: Section 1 Township 29S Range 15W							
Lat:				Long:			
Contractor: AZTEC WELL SERVICE			Rig/Platform Name/Num: AWS 673				
Job Purpose: Cement Multiple Stages						Ticket Amount:	
Well Type: Development Well			Job Type: Cement Multiple Stages				
Sales Person: FLING, MATTHEW			Srv Supervisor: RICHESIN, ANTHONY			MBU ID Emp #: 412961	

Activity Description	Date/Time	Cht #	Rate bbl/min	Volume bbl		Pressure psig		Comments
				Stage	Total	Tubing	Casing	
Call Out	08/22/2010 19:30							CEMENTER CALLED AT 1530 TO SET TOOL REST OF CREW CALLED AT 1930 ON 8/22/10
Safety Meeting - Service Center or other Site	08/22/2010 20:00							Safety meeting with entire crew before departing for location
Arrive At Loc	08/22/2010 23:00							Arrived on location 1730. Talked to company man about job layout and procedure
Assessment Of Location Safety Meeting	08/22/2010 23:45							All cement crew walked location and discussed all possible safety hazards
Rig-Up Equipment	08/23/2010 01:30							Rig-Up equipment and discussed safety concerns
Safety Meeting - Pre Job	08/23/2010 05:00							Discussed job pumping hazards with rig crew, company man, and cement crew
Start Job	08/23/2010 06:33							
Pressure Test	08/23/2010 06:39							PRESSURED TESTED A NUMBER OFF TIMES CHELKEK ALL VALVES/ PUMPS /SWAPED DOWN HOLE TO PASSENGER SIDE ISOLATED ONE PUMP GOT PSI TEST 4320 PSI HELD 2 MIN

Sold To #: 300466

Ship To #: 2800220

Quote #:

Sales Order #:

7576385

SUMMIT Version: 7.20.130

Monday, August 23, 2010 07:42:00

HALLIBURTON**Cementing Job Log**

Activity Description	Date/Time	Cht #	Rate bbl/min	Volume bbl		Pressure psig		Comments
				Stage	Total	Tubing	Casing	
Pump Spacer 1	08/23/2010 08:17		3	10	10		209.0	Pumped 10 bbl of fresh water WITH 70LB FE-2 MIXED ON SIGHT IN 10 BBL
Pump Spacer	08/23/2010 08:22		5	30	30		315.0	30 BBL TUNE SPACER MIXED @ 10.5#
Pump Spacer	08/23/2010 08:30		3	10	10		286.0	10 BBL FRESH WATER WITH FE-2 70LB MIXED ON SIGHT IN 10 BBL
Pump 1st Stage Lead Slurry	08/23/2010 08:39		5	88.3	88.3		512.0	570 SACKS OF THERMALOCK CEMENT @ 15.5# YIELD .87 GAL PER SACK 3.33= 88.3 BBL MIXING .05% BARAZAN-D ON FLY AND 0.6% FE-2
Drop Bottom Plug	08/23/2010 09:05							SHUT DOWN PULLED CAP OFF PLUG CONTAINER DROPPED DART
Pump Displacement	08/23/2010 09:07		6	50.5	50.5		716.0	Pumped 50.5 bbls of fresh water WITH FE-2 THAT WILL BE 15 BBL ABOVE TOOL
Pump Displacement	08/23/2010 09:19		5	101	101		251.0	Pumped 101 BBL MUD bbls of mud
Bump Plug	08/23/2010 09:30		2	151.5	151.5		760.0	CALCULATED PSI TO BUMP AT 914 PSI PUMPED TOATL OFF 151.5 BBL. DID NOT BUMP PLUG. SHUT DOWN AT CALCULATED DISPLACEMENT PER COMPANY REP. 20 MIN CHECK FLOATS
Check Floats	08/23/2010 09:50						760.0	Floats held - returned 1/2 bbl of mud TO TRUCK
Drop Opening Device For Multiple Stage Cementer	08/23/2010 09:55							Released pressure and dropped bomb. Waited 20 min for bomb to reach stage tool OPENED AT 1150 PSI

Sold To #: 300466

Ship To #: 2800220

Quote #:

Sales Order #: 7576385

SUMMIT Version: 7.20.130

Monday, August 23, 2010 07:42:00

HALLIBURTON**Cementing Job Log**

Activity Description	Date/Time	Cht #	Rate bbl/min	Volume bbl		Pressure psig		Comments
				Stage	Total	Tubing	Casing	
Open Multiple Stage Cementer	08/23/2010 10:15							Pressured up TO 1150 PSI to open stage tool. Tool opened AT 1150 PSI
Circulate Well	08/23/2010 10:20							OPENED MSC. HES. LOST CIRCULATION AT 30 BBL AWAY. CIRCULATION TURNED OVER TO RIG PER COMPANY REP. AT 50 TOTAL BBLS GONE GAINED CIRCULATION. COMP REP ESTIMATED 700-900 BBL TO GET FULL RETURNS. CIRCULATED ~37 BBL THERMOLOCK TO PIT
Pressure Test	08/23/2010 16:36							Pressure Test Iron to 4927 PSI. No leaks
Pump Spacer 1	08/23/2010 16:38		3.5	20	20		278.0	Pumped 20. bbls MUD FLUSH. Well was circulating
Pump 2nd Stage Lead Slurry	08/23/2010 16:46		4.5	193.8	193.8		389.0	570 SACKS OF HALLIBURTON LIGHT WITH .1% HR-5 .2% HALAD-322 .2% HALAD-344 MIXED @12.3# YIELD 1.91 GAL PER SACK 10.22=193.8 BBL
Pump 2nd Stage Tail Slurry	08/23/2010 17:23		4	23.5	23.5		337.0	TYPE-V CEMENT .2% HALAD 344 .2% HALAD-322 .1% HR-5/ 110 SACKS MIXED @ 15.5# YIELD 1.2 GAL PER SACK 5.36=23.5 BBL
Drop Plug	08/23/2010 17:29							DROPPED CLOSING TOOL TOP PLUG PRE LOADED IN HEAD
Pump Displacement	08/23/2010 17:31		4	110	110		285.0	LOST RETURNS ~50 BBLS AWAY. DID NOT REGAIN CIRCULATION. PRESSURE TO BUMP (CALCULATED =1135 PSI ACTUAL ~750 PSI)

Sold To #: 300466

Ship To #: 2800220

Quote #:

Sales Order #:

7576385

SUMMIT Version: 7.20.130

Monday, August 23, 2010 07:42:00

HALLIBURTON***Cementing Job Log***

Activity Description	Date/Time	Cht #	Rate bbl/min	Volume bbl		Pressure psig		Comments
				Stage	Total	Tubing	Casing	
Bump Plug	08/23/2010 18:21		2.5	116	116		2579.0	Bumped plug at 750 psi TOOK TO 2550 HELD 2 MIN
Close Multiple Stage Cementer	08/23/2010 18:22							Closed tool at 2550 psi
Check Floats	08/23/2010 18:24							Floats Held, returned 3/4 BBL BACK TO TRUCK
End Job	08/23/2010 18:28							
Comment:	08/23/2010 18:29							Thank you for using Halliburton, Anthony Richesin & Crew!

Sold To #: 300466

Ship To #: 2800220

Quote #:

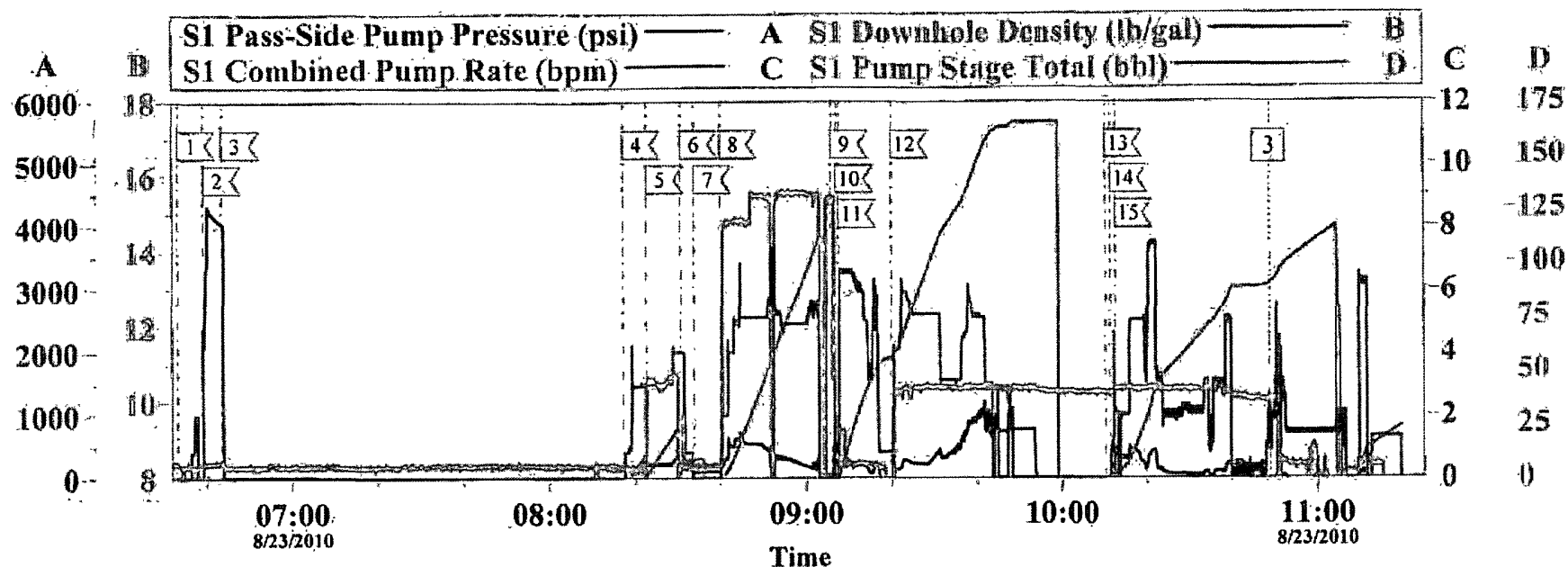
Sales Order #: 7576385

SUMMIT Version: 7.20.130

Monday, August 23, 2010 07:42:00

ANADARKO

PATHFINDER AGI WELL#1 1ST STAGE

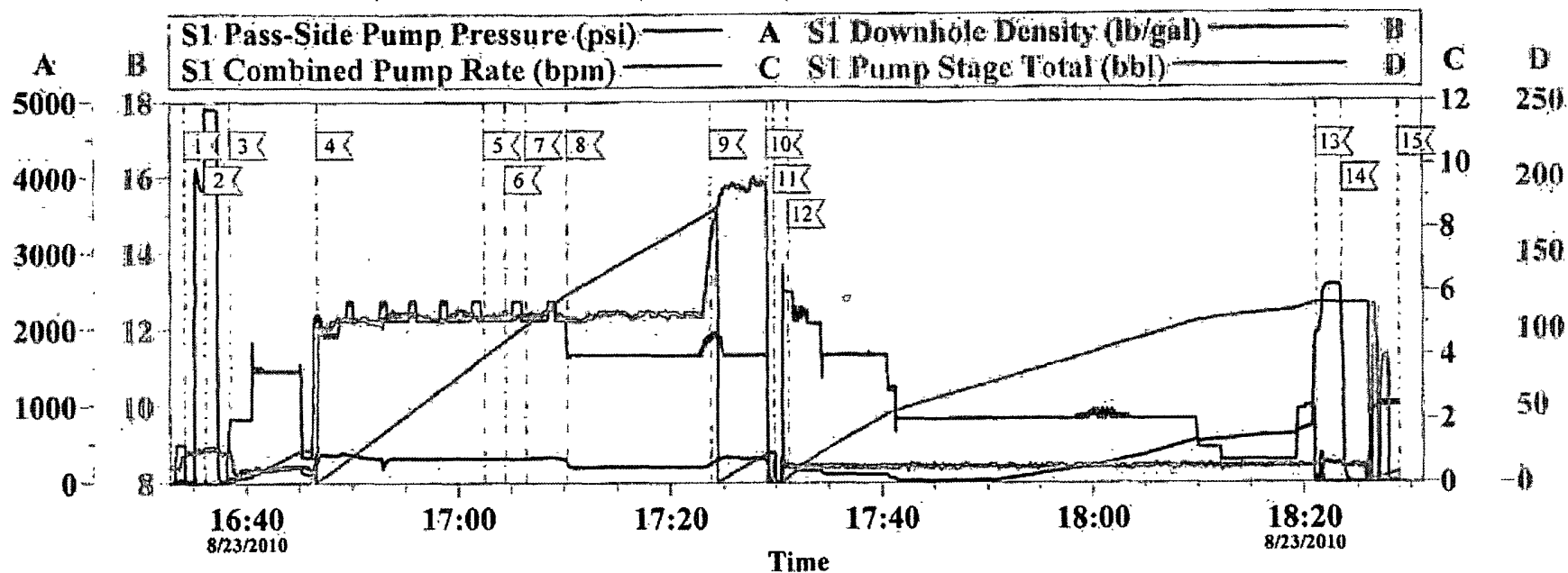


Local Event Log					
	Maximum	SPPP		Maximum	SPPP
1	START JOB	06:33:14 2388	2	TEST LINES	06:39:13 4320
3	BATCH MIX THERMOLOCK	06:43:32 4044	4	PUMP FE-2 H2O	08:17:11 209.1
5	PUMP TS III	08:22:38 315.0	6	PUMP FE-2 H2O	08:30:38 286.0
7	SHUT DOWN	08:33:47 115.8	8	PUMP THERMOLOCK	08:39:48 716.0
9	DROP PLUG	09:05:52 28.00	10	START DISPLACEMENT	09:07:00 -2.000
11	PUMP FE-2 WATER	09:07:35 251.0	12	PUMP MUD	09:19:54 1206
13	CHECK FLOATS	10:10:17 -7.000	14	DROP BOMB	10:11:27 500.0
15	OPEN TOOL	10:12:35 497.0			

Customer: ANADARKO	Job Date: 23-Aug-2010	Sales Order #: 7576385
Well Description: PATHFINDER AGI WELL#1	Job type: 2 STAGE	ADC Used: YES
Customer Rep: DALTON KING	Service Supervisor: ANTHONY RICHESIN	Operator/ Pump: TROY ANGLESTIN

OptiCem v6.4.0
23-Aug-10 13:42

ANADARKO



Local Event Log							
Maximum		SPPP		Maximum		SPPP	
1	START JOB	16:34:12	4930	2	TEST LINES	16:36:09	4927
3	PUMP MUDFLUSH	16:38:28	278.0	4	PUMP LEAD	16:46:39	389.0
5	SLOW RATE	17:02:30	318.0	6	SLOW RATE	17:04:27	323.0
7	SLOW RATE	17:06:25	335.0	8	BUMP PLUG	17:10:19	262.0
9	PUMP TAIL	17:23:50	337.0	10	SHUT DOWN	17:29:13	132.0
11	DROP PLUG	17:29:49	233.1	12	START DISPLACEMENT	17:31:11	1946
13	CLOSE MSC	18:21:12	2579	14	RELEASE PRESSURE	18:23:34	1878
15	END JOB	18:28:54	5.000				

Customer: ANADARKO	Job Date: 23-Aug-2010	Sales Order #: 7576385
Well Description: PATHFINDER AGI WELL #1	Job type: 2-STAGE	ADC Used: YES
Customer Rep: DALTON KING	Service Supervisor: ANTHONY RICHESIN	Operator/ Pump: TROY A/ELITE 8