

RECEIVED

**UNITED STATES
DEPARTMENT OF THE INTERIOR
BUREAU OF LAND MANAGEMENT**

AUG 19 2010**Sundry Notices and Reports on Wells**Farmington Field Office
Bureau of Land Management1. **Type of Well**
GAS2. **Name of Operator****CONOCOPHILLIPS COMPANY**3. **Address & Phone No. of Operator**

PO Box 4289, Farmington, NM 87499 (505) 326-9700

4. **Location of Well, Footage, Sec., T, R, M**

Surf: Unit L (NWSW), 1690' FSL & 1120' FWL, Section 15, T24N, R5W, NMPM

5. **Lease Number**
JIC366. **If Indian, All. or
Tribe Name**7. **Unit Agreement Name**8. **Well Name & Number**
Northeast Haynes 8E9. **API Well No.**

30-039-22663

10. **Field and Pool**11. **Basin DK**
County and State
Rio Arriba Co., NM**12. CHECK APPROPRIATE BOX TO INDICATE NATURE OF NOTICE, REPORT, OTHER DATA****Type of Submission**☒ Notice of Intent☐ Subsequent Report☐ Final Abandonment**Type of Action**☒ Abandonment☐ Recompletion☐ Plugging☐ Casing Repair☐ Altering Casing☐ Change of Plans☐ New Construction☐ Non-Routine Fracturing☐ Water Shut off☐ Conversion to Injection☒ Other - ☐ P&A**13. Describe Proposed or Completed Operations**

ConocoPhillips wishes to P&A the subject well per attached procedure and well bore schematic.

RCVD AUG 24 '10**OIL CONS. DIV.****DIST. 3****14. I hereby certify that the foregoing is true and correct.**Signed: Jamie Goodwin Title Regulatory Technician Date 08/19/2010

(This space for Federal or State Office use)

APPROVED BY Original Signed: Stephen Mason Title _____ Date AUG 20 2010**CONDITION OF APPROVAL, if any:**

Title 18 U.S.C. Section 1001, makes it a crime for any person knowingly and willfully to make any department or agency of the United States any false, fictitious or fraudulent statements or representations as to any matter within its jurisdiction.

NMOCD

ConocoPhillips
NORTHEAST HAYNES 8E
Expense - P&A

Lat 36° 18' 35.784" N

Long 107° 21' 9.36" W

PROCEDURE

1. Hold pre-job safety meeting. Comply with all NMOCD, BLM, and COPC safety and environmental regulations. Test rig anchors prior to moving in rig.
2. MIRU work over rig. Check casing, tubing, and bradenhead pressures and record them in Wellview.
3. RU blow lines from casing valves and begin blowing down casing pressure. Kill well with 2% KCl, if necessary.

4. TOOH with Rods (details below).

Number	Description
1	1-1/4" x 22' Polished Rod
2	7/8" Pony Rods 6'
71	7/8" Plain Sucker Rods
198	3/4" Plain Sucker Rods
3	1 1/4" Sinker Bars
1	2"x1 1/2"x16' RWBC-Z Insert Pump
1	1"x12" Gas Anchor

5. ND wellhead and NU BOPE.

6. TOOH with tubing (details below).

Number	Description
1	2-3/8" Tubing joint
1	2-3/8", 4.7#, J-55 Pup Joint
174	2-3/8", 4.7#, J-55 Tubing Joints
1	Tubing Anchor
42	2-3/8", 4.7#, J-55 Tubing Joints
1	2-3/8" F-Nipple
1	2-3/8" Open Ended Pup Joint w/Weep Hole

Notes *** All cement volumes use 100% excess outside pipe and 50' excess inside pipe. The stabilizing wellbore fluid will be 8.3 ppg, sufficient to balance all exposed formation pressures. All cement will be ASTM Type II mixed at 15.6 ppg with a 1.18 cf/sk yield. A Temperature Survey was run in 1981, and TOC was determined at 44' in the surface-production casing annulus. Ensure the A+ "coil" unit is available when needed to perform Plug #6.

7. RIH with casing scraper down to 6733'. 2005 workover information indicates a tight spot from 6185'-6195'. Attempt the casing scraper run to see if a cement retainer can be set downhole at 6733'. Continue to the next step if the tight spot is not an issue. If it is an issue, contact the engineer as soon as practical.

8. **Plug #1 (Dakota Perforations and Top, 6733'-6633')**: RIH and set CR at 6733'. Spot 17 sxs Class B cement and spot a balanced plug inside the casing above CR to isolate the Dakota interval. TOH.

9. **Plug #2 (Gallup Perforations and Top, 5659'-5559')**: RIH and set CR at 5659'. Pressure test tubing to 1000 PSI. Pressure test casing to 800 PSI. If casing does not pressure test, then spot or tag subsequent plugs as appropriate. Spot 17 sxs Class B cement and spot a balanced plug inside the casing above CR to isolate the Gallup interval. PUH.

10. **Plug #3 (Mesaverde Top, 3980'-3880')**: Mix 17 sxs Class B cement and spot a balanced plug inside casing to cover the Mesaverde top. PUH with tubing.

11. **Plug #4 (Picture Cliffs, Fruitland, Kirtland and Ojo Alamo tops, 2442'- 1590')**: Mix 103 sxs Class B cement and spot a balanced plug inside casing to cover through the Ojo Alamo top. PUH with tubing.

545'

12. **Plug #5 (Nacimiento top and 8.625" Surface casing shoe, ~~357'~~ to 245')**: Mix ~~10~~ sxs Class B cement and spot a balanced plug inside casing to cover the Nacimiento Top and Surface Casing Shoe. PUH with tubing.

13. **Plug #6 (Surface, 60' to Surface)**: A Temperature Survey was run in 1981 with TOC determined at 44' between the 8-5/8" surface and 5-1/2" production casing annulus. Pressure test the bradenhead before commencing the Plug #6 operations. If the test passes, spot 11 sxs cement inside 5-1/2" casing from 50' to surface while tripping out of hole. Rig Up A+ "coil" unit to spot 15 sxs cement in the 8-5/8" surface and 5-1/2" production casing annulus from 44' to surface. If the bradenhead test does not pass, contact the engineer as soon as practical. Shut in well and WOC.

14. ND BOP and cut off wellhead below surface casing flange. Install P&A marker with cement to comply with regulations. RD, MOL and cut off anchors. Restore location per BLM stipulations.

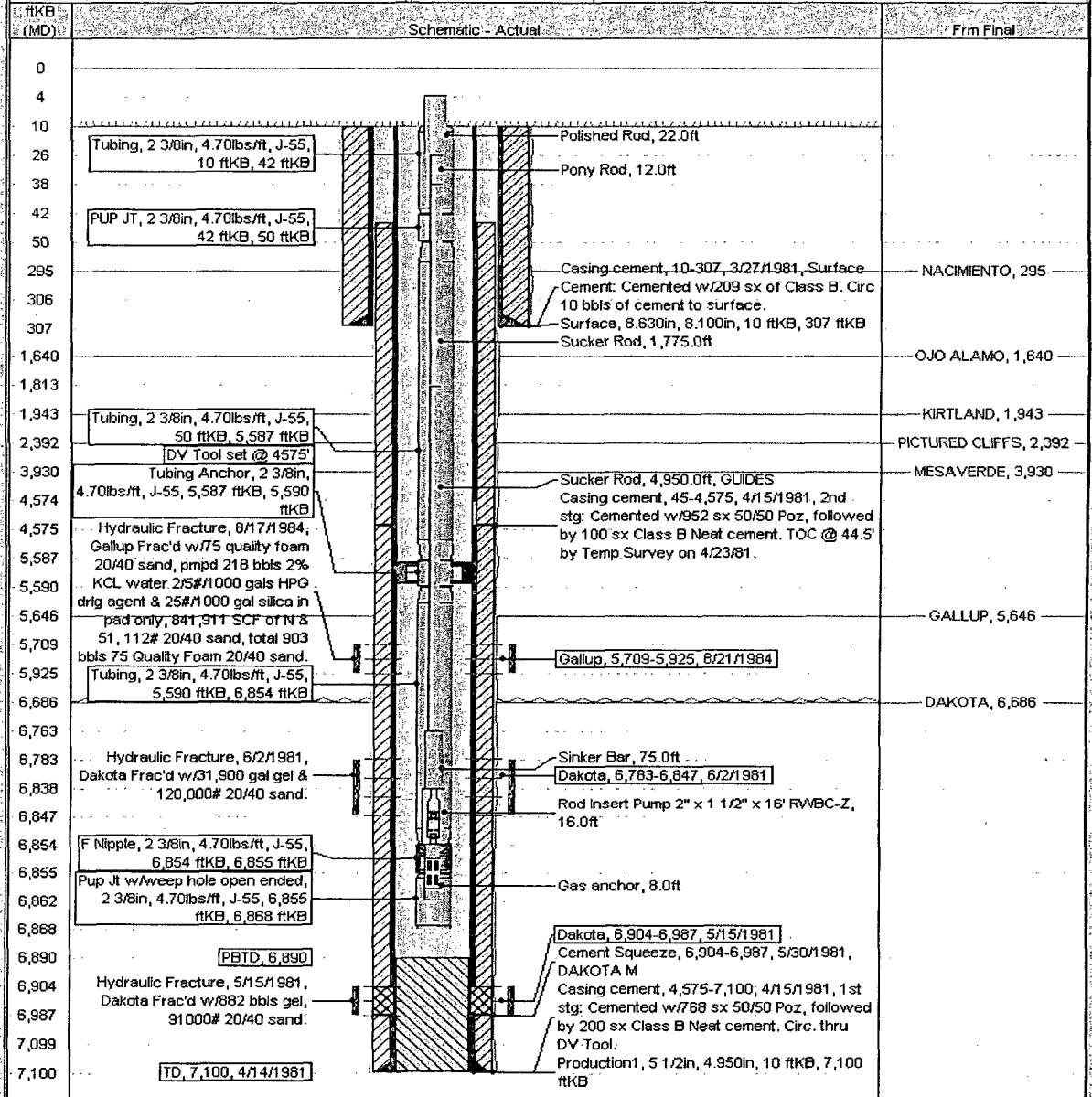
Current Schematic

ConocoPhillips

Well Name: N E HAYNES 8E

API/ UWI	Surface Legal Location	Field Name	License No.	State/ Province	Well Configuration Type	Edit
3003922663	NMPM-24N-05W-15-L	GLDK COM		NEW MEXICO	Vertical	
Ground Elevation (ft)	Original KB/RT Elevation (ft)	KB-Ground Distance (ft)	KB-Casing Flange Distance (ft)	KB-Tubing Hanger Distance (ft)		
6,646.00	6,656.00	10.00	10.00	10.00		

Well Config: Vertical - Main Hole: 8/8/2010 4:24:06 PM



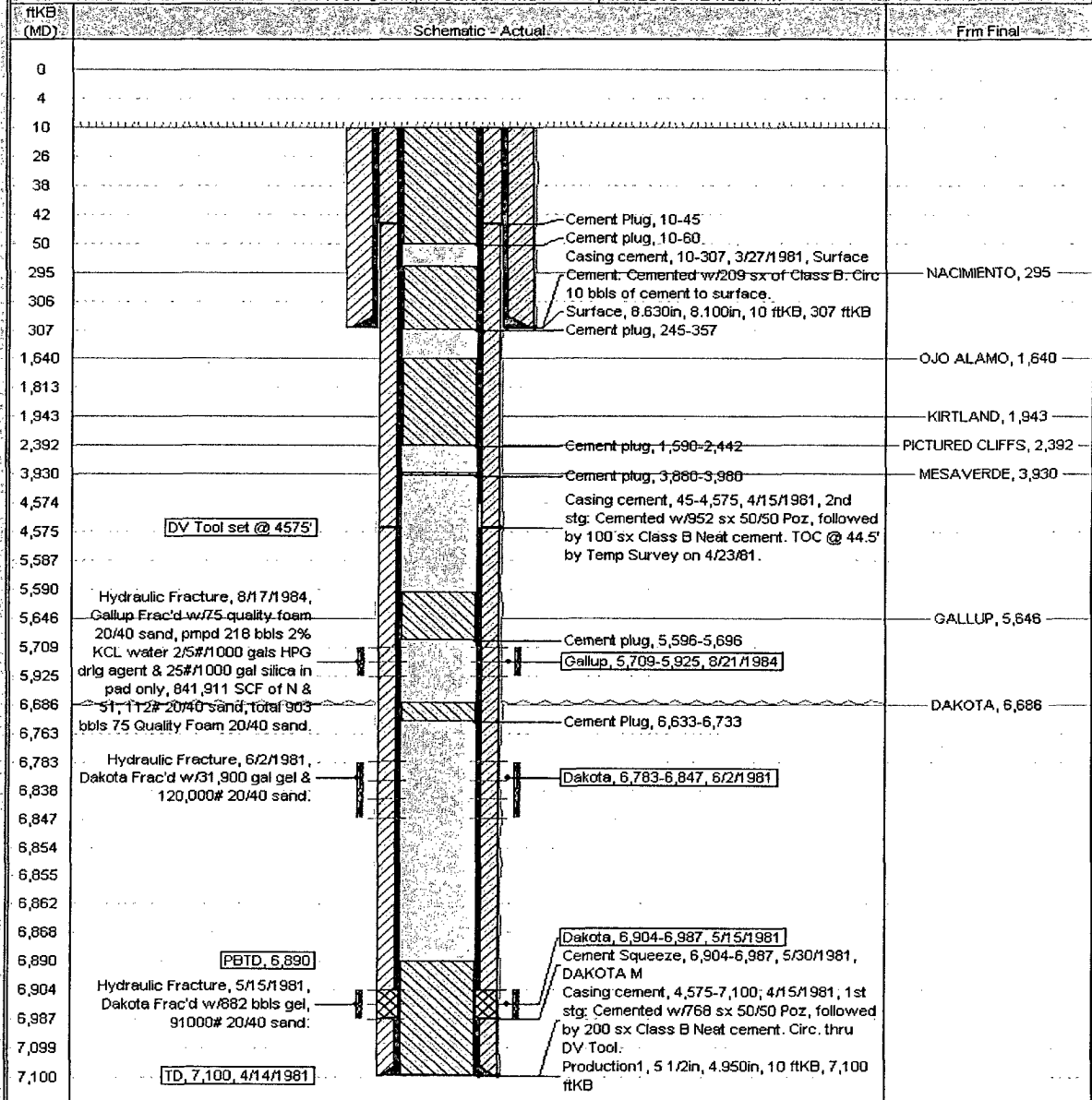
Proposed Schematic

ConocoPhillips

Well Name: N E HAYNES 8E

API/ UWI	Surface Legal Location	Field Name	License No.	State/ Province	Well Configuration Type	Edit
3003922663	NMPM-24N-05W-15-L	GL/DK COM		NEW MEXICO	Vertical	
Ground Elevation (ft)	Original K&RT Elevation (ft)	K&RT Ground Distance (ft)	K&RT Casing Fange Distance (ft)	K&RT Hanger Distance (ft)		
6,646.00	6,656.00	10.00	10.00	10.00		

Well Config: Vertical - Main Hole: 8/8/2010 4:24:06 PM



**UNITED STATES DEPARTMENT OF THE INTERIOR
BUREAU OF LAND MANAGEMENT
FARMINGTON DISTRICT OFFICE
1235 LA PLATA HIGHWAY
FARMINGTON, NEW MEXICO 87401**

Attachment to notice of
Intention to Abandon:

Re: Permanent Abandonment
Well: 8E Northeast Haynes

CONDITIONS OF APPROVAL

1. Plugging operations authorized are subject to the attached "General Requirements for Permanent Abandonment of Wells on Federal and Indian Lease."
2. Farmington Office is to be notified at least 24 hours before the plugging operations commence (505) 599-8907.
3. The following modifications to your plugging program are to be made:
 - a) Place the Nacimiento/Surface Casing Shoe plug from 545' – 245'.

You are also required to place cement excesses per 4.2 and 4.4 of the attached General Requirements.

Office Hours: 7:45 a.m. to 4:30 p.m.