

RECEIVED

UNITED STATES
DEPARTMENT OF THE INTERIOR
BUREAU OF LAND MANAGEMENT

SEP 22 2010

Sundry Notices and Reports on Wells

Farmington Field Office
Bureau of Land Management1. Type of Well
GAS5. Lease Number
SF-0789996. If Indian, All. or
Tribe Name

2. Name of Operator

BURLINGTON

RESOURCES OIL & GAS COMPANY LP

7. Unit Agreement Name
San Juan 31-6 Unit

3. Address & Phone No. of Operator

PO Box 4289, Farmington, NM 87499 (505) 326-9700

8. Well Name & Number
101

9. API Well No.

30-039-30718

4. Location of Well, Footage, Sec., T, R, M

10. Field and Pool

Rosa Pictured Cliffs

Surf: Unit D (NWNW), 850' FNL & 1150' FWL, Section 35, T31N, R6W, NMPM

11. County and State
Rio Arriba Co., NM

12. CHECK APPROPRIATE BOX TO INDICATE NATURE OF NOTICE, REPORT, OTHER DATA

Type of Submission

☒ Notice of Intent☐ Subsequent Report☐ Final Abandonment

Type of Action

☐ Abandonment☐ Recompletion☐ Plugging☐ Casing Repair☐ Altering Casing☐ Change of Plans☐ New Construction☐ Non-Routine Fracturing☐ Water Shut off☐ Conversion to Injection☒ Other - ☐ Change LocationRCVD SEP 28 '10
OIL CONS. DIV.
DIST. 3

13. Describe Proposed or Completed Operations

ConocoPhillips staked 2 wells on the existing pad for San Juan 31-6 unit 35E and now one of the wells, San Juan 31-6 35P, has been cancelled. ConocoPhillips needs to change the San Juan 31-6 Unit 101 footages for the surface location to 900' FNL and 1170' FWL. This move is to accommodate the setback the rig needs in order to operate safely. **The new surface footages for the San Juan 31-6 Unit 101 is Unit D (NWNW) 900' FNL & 1170' FWL Sec 35, T31N, R6W. Please make noted change in your records.**

Attached is the new plat package

14. I hereby certify that the foregoing is true and correct.

Signed Brandie Blabley Title Staff Regulatory Technician Date 9-21-10

(This space for Federal or State Office use)

APPROVED BY Gm Fench Title Team Lead EPS Date 9/24/10

CONDITION OF APPROVAL, if any:

Title 18 U.S.C. Section 1001, makes it a crime for any person knowingly and willfully to make any department or agency of the United States any false, fictitious or fraudulent statements or representations as to any matter within its jurisdiction.

NMOCD

PC

District I
1625 N. French Dr., Hobbs, NM 88240

District II
1301 W. Grand Avenue, Artesia, NM 88210

District III
1000 Rio Brazos Rd., Aztec, NM 87410

District IV
1220 S. St. Francis Dr., Santa Fe, NM 87505

State of New Mexico
Energy, Minerals & Natural Resources Department

OIL CONSERVATION DIVISION
1220 South St. Francis Dr.
Santa Fe, NM 87505

Form C-102
Revised October 12, 2005
Instructions on back
Submit to Appropriate District Office
State Lease - 4 Copies
Fee Lease - 3 Copies

☐ AMENDED REPORT

WELL LOCATION AND ACREAGE DEDICATION PLAT

| | | |
|--|---|---|
| ¹ API Number 30-039-30718 | ² Pool Code 96175 | ³ Pool Name ROSA PICTURED CLIFFS |
| ⁴ Property Code 31328 | ⁵ Property Name SAN JUAN 31-6 UNIT | ⁶ Well Number 101 |
| ⁷ GRID No. 217817 | ⁸ Operator Name CONOCOPHILLIPS COMPANY | ⁹ Elevation 6478' |

¹⁰ Surface Location

| | | | | | | | | | |
|---------------------------|----------------------|------------------------|--------------------|---------|-----------------------------|----------------------------------|------------------------------|-------------------------------|-----------------------------|
| UL or lot no. D | Section 35 | Township 31N | Range 6W | Lot Idn | Feet from the 900 | North/South line NORTH | Feet from the 1170 | East/West line WEST | County RIO ARriba |
|---------------------------|----------------------|------------------------|--------------------|---------|-----------------------------|----------------------------------|------------------------------|-------------------------------|-----------------------------|


¹¹ Bottom Hole Location If Different From Surface

| | | | | | | | | | |
|---------------------------|---------|----------|-------|---------|---------------|------------------|---------------|----------------|--------|
| UL or lot no. D | Section | Township | Range | Lot Idn | Feet from the | North/South line | Feet from the | East/West line | County |
|---------------------------|---------|----------|-------|---------|---------------|------------------|---------------|----------------|--------|

| | | | |
|--|-------------------------------|----------------------------------|-------------------------|
| ¹² Dedicated Acres 160.0 Acres - NW/4 | ¹³ Joint or Infill | ¹⁴ Consolidation Code | ¹⁵ Order No. |
|--|-------------------------------|----------------------------------|-------------------------|

NO ALLOWABLE WILL BE ASSIGNED TO THIS COMPLETION UNTIL ALL INTERESTS HAVE BEEN CONSOLIDATED
OR A NON-STANDARD UNIT HAS BEEN APPROVED BY THE DIVISION

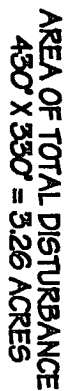
5276.04'

| | |
|---|---|
| ¹⁶ LAT: 36°51.6526' N LONG: 107°26.1958' W DATUM: NAD1927 LAT: 36.86088° N LONG: 107.43720° W DATUM: NAD1983 LEASE SF-078999 35 5280.00' | ¹⁷ OPERATOR CERTIFICATION I hereby certify that the information contained herein is true and complete to the best of my knowledge and belief, and that this organization either owns a working interest or unleased mineral interest in the land including the proposed bottom-hole location or has a right to drill this well at this location pursuant to a contract with an owner of such a mineral or working interest, or to a voluntary pooling agreement or a compulsory pooling order heretofore entered by the division. <i>Brandie Blakley</i> 9-21-10 Signature Date Brandie Blakley 09-21-10 Printed Name ¹⁸ SURVEYOR CERTIFICATION I hereby certify that the well location shown on this plat was plotted from field notes of actual surveys made by me or under my supervision, and that the same is true and correct to the best of my belief Date of Survey: MARCH 11, 2008 Signature and Seal of Professional Surveyor  JASON C. EDWARDS Certificate Number 15269 |
|---|---|

~ SURFACE OWNER ~

New Mexico Game & Fish

EDGE OF TOTAL DISTURBANCE (MARKED WITH STEEL T-POSTS),



CONTRACTOR SHOULD CONTACT ONE-CALL FOR LOCATION OF ANY MARKED OR UNMARKED UNDERGROUND UTILITIES OR PIPELINES ON WELLPAD AND/OR ACCESS ROAD AT LEAST TWO WORKING DAYS PRIOR TO CONSTRUCTION.

VERTICAL SCALE 1"=30'

C/LC/L[illegible]

CONTRACTOR SHOULD CONTACT ONE-CALL FOR LOCATION OF ANY MARKED OR UNMARKED UNDERGROUND UTILITIES OR PIPELINES ON WELLPAD AND/OR ACCESS ROAD AT LEAST TWO WORKING DAYS PRIOR TO CONSTRUCTION.

CONOCOPHILLIPS COMPANY SAN JUAN 31-6 UNIT #101

900' FNL & 1170' FNL, SECTION 35, T31N, R6W, N.M.P.M.

RIO ARriba COUNTY, NEW MEXICO

APD MAP #1

NO NEW CONSTRUCTION
NWNW SECTION 35, T31N, R6W

EXISTING
R.O.W.

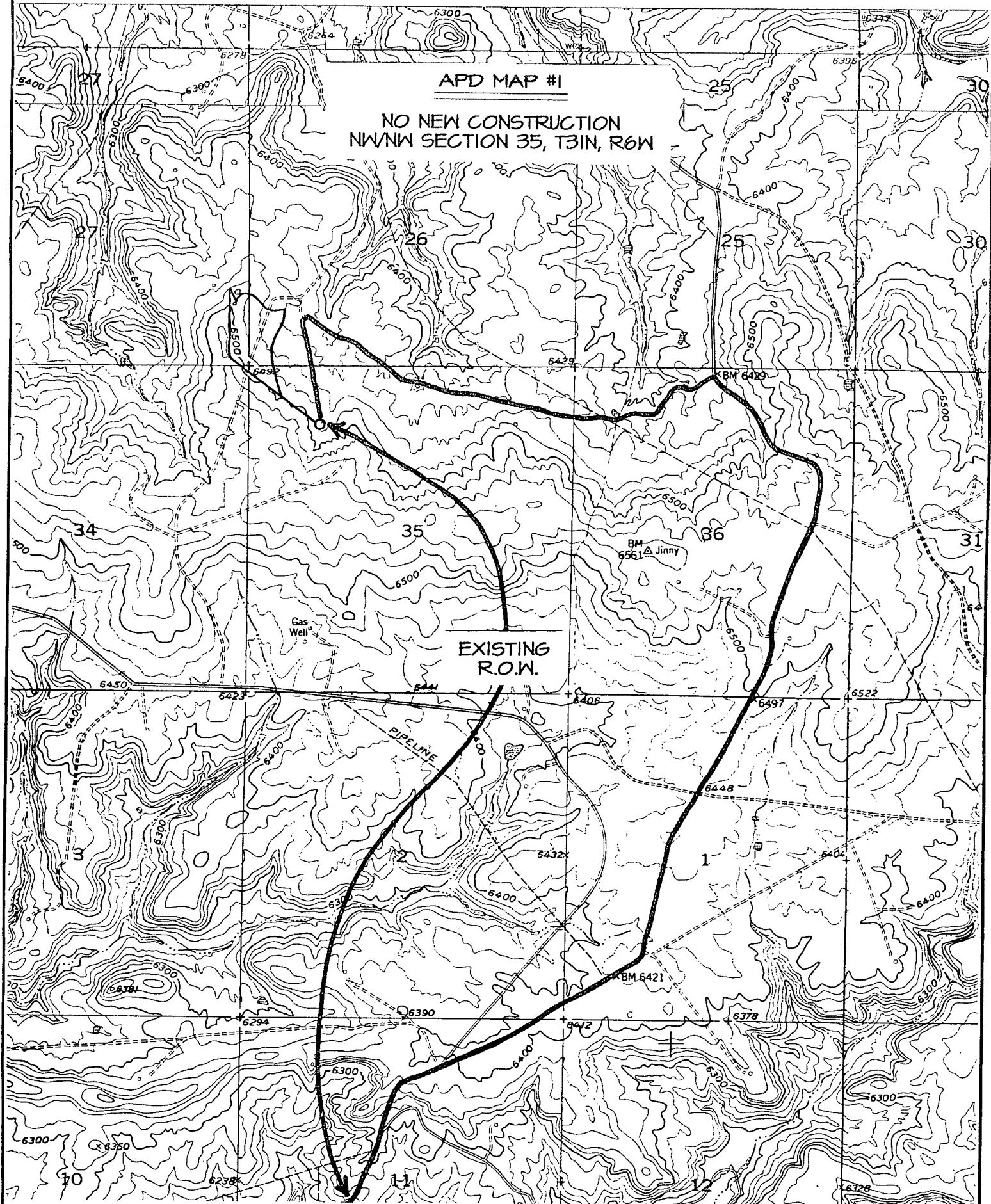
PIPELINE

Gas
Well

BM
6561

Jinny

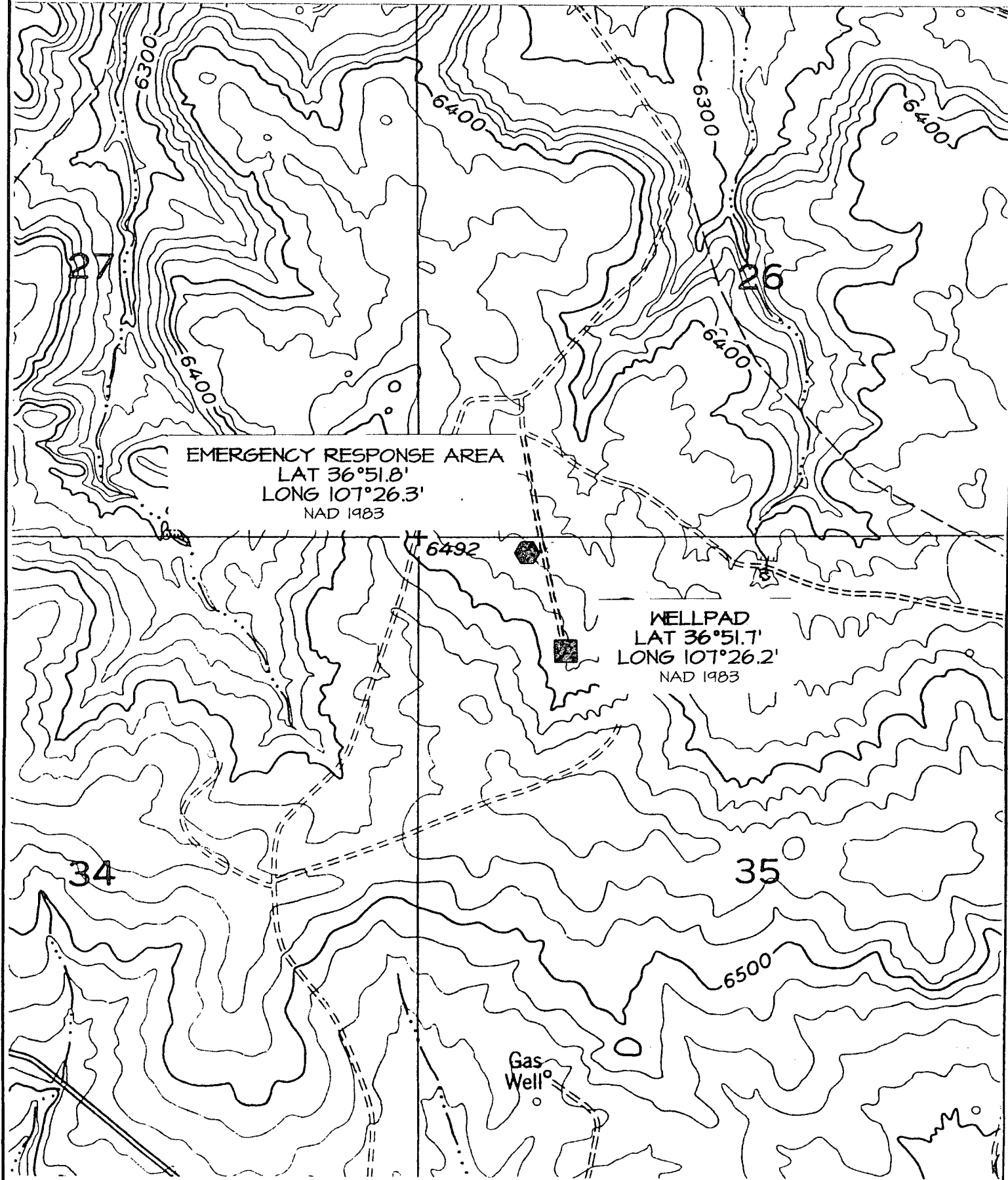
BM 6421



EMERGENCY RESPONSE AREA

CONOCOPHILLIPS COMPANY SAN JUAN 31-6 UNIT #101

900' FNL & 1170' FWL, SECTION 35, T31N, R6W, N.M.P.M.
RIO ARRIBA COUNTY, NEW MEXICO



Directions from the Intersection of US Hwy 64 & US Hwy 550 in Bloomfield, NM
to ConocoPhillips Company San Juan 31-6 Unit #101

900' FNL & 1170' FWL, Section 35, T31N, R6W, NMPM, Rio Arriba County, NM

Latitude : 36.86088°N Longitude : 107.43720°W Datum : NAD1983

From the intersection of US Hwy 64 & US Hwy 550 in Bloomfield, NM, travel Easterly on US Hwy 64 for 38.0 miles to State Hwy 527 (Simms Hwy);

Go left (North-westerly) on State Hwy 527 (Simms Hwy) for 7.9 miles to Rosa Road @ La Jara Station;

Go right (Northerly) on Rosa Road for 6.5 miles to fork in road;

Go left which is straight (North-easterly) remaining on Rosa Road for 1.6 miles to 4-way intersection;

Go straight (North-easterly) @ 4-way intersection for 1.5 miles to fork in road;

Go left (South-westerly) for 1.4 miles to fork in road;

Go left (South-easterly) for 0.3 miles to staked location which overlaps an existing wellpad.