

RECEIVED

UNITED STATES  
DEPARTMENT OF THE INTERIOR  
BUREAU OF LAND MANAGEMENT

SEP 27 2010

Revised

Sundry Notices and Reports on Wells

Farmington Field Office  
Bureau of Land Management

1. Type of Well  
GAS

5. Lease Number  
NMSF-078421

6. If Indian, All. or  
Tribe Name

7. Unit Agreement Name

2. Name of Operator

**BURLINGTON**

RESOURCES OIL &amp; GAS COMPANY LP

3. Address & Phone No. of Operator

PO Box 4289, Farmington, NM 87499 (505) 326-9700

8. Well Name & Number  
McAdams 5

9. API Well No.

30-045-06411

4. Location of Well, Footage, Sec., T, R, M

Surf: Unit D (NWNW), 950' FNL &amp; 890' FWL, Section 20, T27N, R09W, NMPM

10. Field and Pool

11. Basin DK  
County and State  
San Juan Co., NM

## 12. CHECK APPROPRIATE BOX TO INDICATE NATURE OF NOTICE, REPORT, OTHER DATA

## Type of Submission

## Type of Action

☐ Notice of Intent☐ Abandonment☐ Change of Plans☒ X

Other -

☐ Casing repair☒ X Subsequent Report☐ Recompletion☐ New Construction☐ Plugging☐ Non-Routine Fracturing☐ Final Abandonment☐ Casing Repair☐ Water Shut off☐ Altering Casing☐ Conversion to Injection

## 13. Describe Proposed or Completed Operations

8/31/10 call made to Steve Mason/BLM & Kelly Roberts/OCD to report csg leak between 4100' - 4300' w/.2 bbl per min inj rate.  
12/3/07 300psi was used between 4067' - 4318'. BLM & OCD gave verbal to squeeze.  
Burlington Resources performed a csg repair per attached A+ report.  
Attached is the MIT.

RCVD SEP 30 '10

OIL CONS. DIV.

DIST. 3

## 14. I hereby certify that the foregoing is true and correct.

Signed Rhonda Rogers Rhonda Rogers Title Staff Regulatory Technician Date 9/24/10

(This space for Federal or State Office use)

APPROVED BY \_\_\_\_\_ Title \_\_\_\_\_ Date \_\_\_\_\_

CONDITION OF APPROVAL, if any:

Title 18 U.S.C. Section 1001, makes it a crime for any person knowingly and willfully to make any department or agency of the United States any false, fictitious or fraudulent statements or representations as to any matter within its jurisdiction.

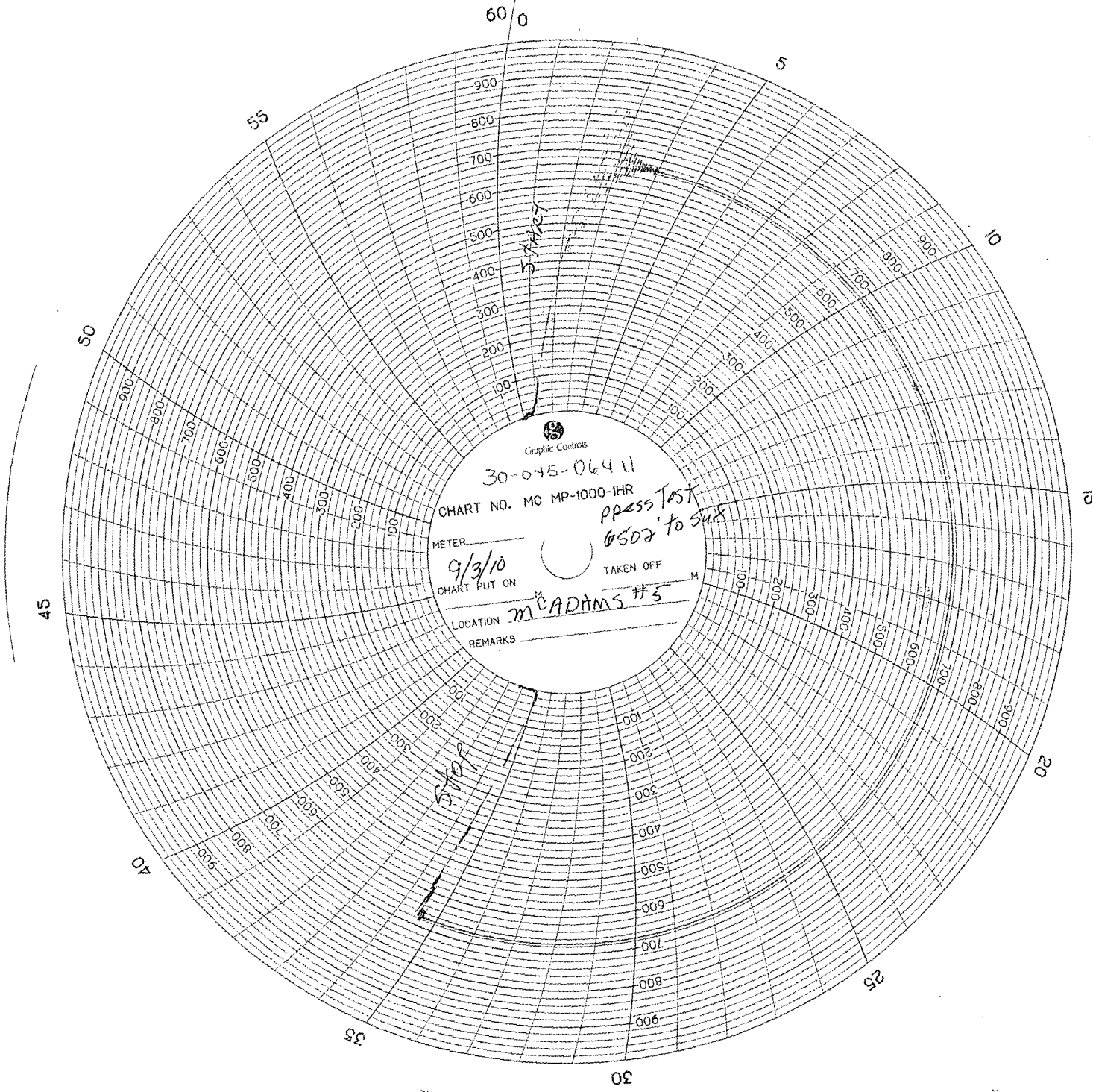
ACCEPTED FOR RECORD

Revised to include MIT

SEP 28 2010

FARMINGTON FIELD OFFICE

NMOC



# A-PLUS WELL SERVICE, INC.

P.O. BOX 1979

Farmington, New Mexico 87499

505-325-2627 \* fax: 505-325-1211

Burlington Resources

McAdams #5

September 9, 2010

Page 1 of 2

950' FNL & 890' FWL, Section 20, T-27-N, R-9-W

San Juan County, NM

Lease Number: SF-078421

API#30-045-04611

Casing Repair

Notified NMOCD and BLM on 8/24/10

## Casing Repair Summary:

- 08/24/10 MOL. LO/TO equipment. Prepare to pull rods. Wait on anchor to be set. SDFD.
- 08/25/10 Check well pressures: casing 260 PSI, tubing 4 PSI and bradenhead 0 PSI. TOH and LD 60 7/8" rods and 21 3/4" rods. Change over for tubing due to body break. ND wellhead. NU BOP and test TOH with 2000' of wet tubing string. PU on rods and work pulling 30K over string weight. Unable to get pump to unseat. Back off rods showing 5000 PSI; LD 4 rods. SDFD.
- 08/26/10 Open up well and blow down 240 PSI casing pressure. Continue to TOH with rods and tubing. Recovered 60 7/8" rods, 209 3/4" rods and 3 K-bars. Total tubing recovered 219 joints and 1 joint 2-3/8" gas anchor. Total 6852'. TIH with tubing and KOT watermelon mill and 4-3/4" bit to 6482'. SI well. SDFD.
- 8/27/10 Check well pressures: casing 200 PSI; tubing 280 PSI and bradenhead 0 PSI. Blow well down. TIH to 6787'. RU MO-TE. Pump 50 bbls 2% KCl hot water at 240° down the tubing. RU Tuboscope. TOH while test 218 joints tubing. Found 167 joints yellow band, 25 joint blue band, 14 joints red band and 12 joints green band. LD mill. RD Tuboscope. Tally and TIH with 5.5" KOT RBP to 5200'. SI well. SDFD.
- 8/30/10 Open up well; no pressure. Continue to TIH; set RBP at 6502'. Load casing with 160 bbls 2% KCl water. Attempt to pressure test casing to 600 PSI; bled down to 460 PSI in 15 minutes. TOH with tubing. TIH with KOT packer to 4419'. Isolate casing leak from 4104' to 4307'. Release packer. SI well. SDFD.
- 8/31/10 open up well; no pressure. Wait on orders. TOH with tubing and LD packer and retrievable head. SI well. SDFD.
- 9/01/10 Open up well; no pressure. RU BlueJet. Run casing inspection log from 4400' to 4000'. TIH with tubing to 4672' and WOO. Dump 3 bags of sand down tubing. Displace to end of tubing with 18 bbls 2% KCl water. PUH to 4358'.  
Squeeze #1: mix and pump 40 sxs Class B cement (47.2 cf) from 4358' to 4005' to isolate the casing leak. PUH to 3736'. Load the hole with 2 bbls of water. Pump 1/2 bbl water and pressure up to 700 PSI and WOC. Pressure dropped to 420 PSI. Pump .3 bbls of water and pressured up to 750 PSI; bled down to 680 PSI in 15 minutes. Pump .2 bbls of water and pressure up to 800 PSI; wait 30 minutes to 795 PSI. Kick pump in 1 stroke and pressured up to 820 PSI and held for 15 minutes. TOC at 4047'. SI well. SDFD.

# A-PLUS WELL SERVICE, INC.

P.O. BOX 1979  
Farmington, New Mexico 87499  
505-325-2627 \* fax: 505-325-1211

Burlington Resources  
McAdams #5

September 9, 2010  
Page 2 of 2

## Casing Repair Summary Cont'd:

- 9/02/10 Check well pressures: casing and tubing 790 PSI; bradenhead 0 PSI. Blow well down. TIH with 4-3/4" tooth bit and tag cement at 4053'. Drill out cement to 4143'. Pressure test casing to 700 PSI for 10 minutes. Drill out cement from 4143' to 4205' and from 4205' to 4267', same results. Drill cement to 4298'. Circulate well clean. SI well. SDFD.
- 9/03/10 Open up well; no pressure. Continue to drill cement to 4333'. Pressure test casing to 700 PSI for 10 minutes. Drill cement to 4362' and fall through. Check for stringers to 4429'. Circulate well clean. Pressure test casing and chart for 30 minutes. Held at 670 PSI with no drop off. TOH with tubing and LD 4-3/4" bit. Round trip 5.5" casing scraper to 4427'. TIH with tubing and retrievable head to 1315'. RU swing off casing valve to FB tank. SI well. SDFD.
- 9/07/10 Open up well; no pressure. TIH with tubing and blow well dry with air to 6481'. PU 1 joint tubing and tag sand at 6491'. Clean out sand to RBP at 6502'. Found RBP stuck. Pump 30 bbls 2% KCl water down casing. Work RBP free. TOH and LD RBP. SI well. SDFD.
- 9/08/10 Open up well and blow down 10 PSI casing pressure. TIH with 4-3/4" bit and blow air to 4925'; no fluid. TIH to 6897' and tag fill. Blow well with air from 6880'; unload 46 bbls. Clean out fill to PBTD at 6929' with air and 6 bph mist. Blow well dry. TOH and LD bit. SI well. SDFD.
- 9/09/10 Open up well and blow down 150 PSI casing pressure. TIH with 2-3/8", 4.7#<sup>J-55</sup> EUE production tubing broaching every 2 joints with 1.901" broach to 6108'. Blow well with air from 6108'; no fluid. Tag fill at 6915'. Did not broach 7 joints. Blow well with air from 6915'; very light mist. Clean out fill with air from 6915' to PBTD 6929'. Run 2 - 5 bbl sweeps. LD 6 joints tubing and install donut. Land well with 216 joints tubing as follows: EOT at 6742' KB, SN at 6741' KB, exp check, SN, 1 joint 2' sub and 215 joints 2-3/8" EUE, 4.7# tubing. RD swivel. ND BOP. NU wellhead. Drop ball. Pump 5 bbls 2% KCl water and pump air down the tubing. Pump off exp check with 600 PSI. Blow well dry. Pump air down the casing and out the tubing to ensure that exp check is pumped off. RD rig and equipment. Remove LO/TO. ND 4" line to FB tank. SDFD.