

C-144

Jones, Brad A., EMNRD

From: Kim_Champlin@xtoenergy.com
Sent: Monday, March 29, 2010 11:30 AM
To: Jones, Brad A., EMNRD
Subject: BGT Closures

Hi Brad,

XTO Energy is taking the necessary steps to P&A some wells in the next several months. All of these wells had pit applications submitted to your office. Can you please review/approve the closure plan part of the application? If you have any questions or require further information feel free to contact me. Thank you.

Kutz Federal Gas Com A #1	30-045-26069	Sec. 08M-T28N-R10W	11/25/2008
Abrams Gas Com C #1	30-045-07880	Sec. 25F-T29N-R10W	12/5/2008
Thomas #1	30-045-09722	Sec. 09A-T30N-R11W	12/12/2008
Berger A #1	30-045-13035	Sec. 21J-T26N-R11W	1/9/2009
Byrd Frost #1	30-045-25533	Sec. 16D-T26N-R08W	1/16/2009

Kim Champlin
XTO Energy Inc.
EH&S Administrative Coordinator
San Juan Division
(505) 333-3100 office
(505) 330-8357 cell
(505) 333-3280 fax
kim_champlin@xtoenergy.com

District I
1625 N. French Dr., Hobbs, NM 88240
District II
1301 W. Grand Avenue, Artesia, NM 88210
District III
1000 Rio Brazos Road, Aztec, NM 87410
District IV
1220 S. St. Francis Dr., Santa Fe, NM 87505

State of New Mexico
Energy Minerals and Natural Resources
Department
Oil Conservation Division
1220 South St. Francis Dr.
Santa Fe, NM 87505

2008 DEC 12 PM 4 12

For temporary pits, closed-loop systems, and below-grade tanks, submit to the appropriate NMOCD District Office.
For permanent pits and exceptions submit to the Santa Fe Environmental Bureau office and provide a copy to the appropriate NMOCD District Office.

**Pit, Closed-Loop System, Below-Grade Tank, or
Proposed Alternative Method Permit or Closure Plan Application**

Type of action: ☒ Permit of a pit, closed-loop system, below-grade tank, or proposed alternative method
Existing BGT ☐ Closure of a pit, closed-loop system, below-grade tank, or proposed alternative method
☐ Modification to an existing permit
☒ Closure plan only submitted for an existing permitted or non-permitted pit, closed-loop system, below-grade tank, or proposed alternative method

Instructions: Please submit one application (Form C-144) per individual pit, closed-loop system, below-grade tank or alternative request

Please be advised that approval of this request does not relieve the operator of liability should operations result in pollution of surface water, ground water or the environment. Nor does approval relieve the operator of its responsibility to comply with any other applicable governmental authority's rules, regulations or ordinances.

1.
Operator: XTO Energy, Inc. OGRID #: 5380
Address: #382 County Road 3100, Aztec, NM 87410
Facility or well name: Thomas #1
API Number: 30-045-09722 OCD Permit Number: _____
U/L or Qtr/Qtr A Section 09 Township 30N Range 11W County: San Juan
Center of Proposed Design: Latitude 36.83084 Longitude 107.99054 NAD: ☐ 1927 ☒ 1983
Surface Owner: ☐ Federal ☐ State ☒ Private ☐ Tribal Trust or Indian Allotment

2.
☐ **Pit:** Subsection F or G of 19.15.17.11 NMAC
Temporary: ☐ Drilling ☐ Workover
☐ Permanent ☐ Emergency ☐ Cavitation ☐ P&A
☐ Lined ☐ Unlined Liner type: Thickness _____ mil ☐ LLDPE ☐ HDPE ☐ PVC ☐ Other _____
☐ String-Reinforced
Liner Seams: ☐ Welded ☐ Factory ☐ Other _____ Volume: _____ bbl Dimensions: L _____ x W _____ x D _____

3.
☐ **Closed-loop System:** Subsection H of 19.15.17.11 NMAC
Type of Operation: ☐ P&A ☐ Drilling a new well ☐ Workover or Drilling (Applies to activities which require prior approval of a permit or notice of intent)
☐ Drying Pad ☐ Above Ground Steel Tanks ☐ Haul-off Bins ☐ Other _____
☐ Lined ☐ Unlined Liner type: Thickness _____ mil ☐ LLDPE ☐ HDPE ☐ PVC ☐ Other _____
Liner Seams: ☐ Welded ☐ Factory ☐ Other _____

4.
☒ **Below-grade tank:** Subsection I of 19.15.17.11 NMAC
Volume: 120 bbl Type of fluid: Produced Water
Tank Construction material: Steel
☐ Secondary containment with leak detection ☐ Visible sidewalls, liner, 6-inch lift and automatic overflow shut-off
☐ Visible sidewalls and liner ☐ Visible sidewalls only ☒ Other Visible sidewalls, vaulted, automatic high-level shut off, no liner
Liner type: Thickness _____ mil ☐ HDPE ☐ PVC ☐ Other _____

5.
☐ **Alternative Method:**
Submittal of an exception request is required. Exceptions must be submitted to the Santa Fe Environmental Bureau office for consideration of approval.

6.

Fencing: Subsection D of 19.15.17.11 NMAC (*Applies to permanent pits, temporary pits, and below-grade tanks*)

- ☐ Chain link, six feet in height, two strands of barbed wire at top (*Required if located within 1000 feet of a permanent residence, school, hospital, institution or church*)
- ☐ Four foot height, four strands of barbed wire evenly spaced between one and four feet
- ☒ Alternate. Please specify Four foot height, steel mesh field fence (hogwire) with pipe top railing

7.

Netting: Subsection E of 19.15.17.11 NMAC (*Applies to permanent pits and permanent open top tanks*)

- ☐ Screen ☐ Netting ☒ Other Expanded metal or solid vaulted top
- ☐ Monthly inspections (If netting or screening is not physically feasible)

8.

Signs: Subsection C of 19.15.17.11 NMAC

- ☐ 12"x 24", 2" lettering, providing Operator's name, site location, and emergency telephone numbers
- ☒ Signed in compliance with 19.15.3.103 NMAC

9.

Administrative Approvals and Exceptions:

Justifications and/or demonstrations of equivalency are required. Please refer to 19.15.17 NMAC for guidance.

Please check a box if one or more of the following is requested, if not leave blank:

- ☐ Administrative approval(s): Requests must be submitted to the appropriate division district or the Santa Fe Environmental Bureau office for consideration of approval.
- ☐ Exception(s): Requests must be submitted to the Santa Fe Environmental Bureau office for consideration of approval.

10.

Siting Criteria (regarding permitting): 19.15.17.10 NMAC

Instructions: The applicant must demonstrate compliance for each siting criteria below in the application. Recommendations of acceptable source material are provided below. Requests regarding changes to certain siting criteria may require administrative approval from the appropriate district office or may be considered an exception which must be submitted to the Santa Fe Environmental Bureau office for consideration of approval. Applicant must attach justification for request. Please refer to 19.15.17.10 NMAC for guidance. Siting criteria does not apply to drying pads or above-grade tanks associated with a closed-loop system.

Ground water is less than 50 feet below the bottom of the temporary pit, permanent pit, or below-grade tank. - NM Office of the State Engineer - iWATERS database search; USGS; Data obtained from nearby wells	<input checked="" type="checkbox"/> Yes <input type="checkbox"/> No
Within 300 feet of a continuously flowing watercourse, or 200 feet of any other significant watercourse or lakebed, sinkhole, or playa lake (measured from the ordinary high-water mark). - Topographic map; Visual inspection (certification) of the proposed site	<input type="checkbox"/> Yes <input checked="" type="checkbox"/> No
Within 300 feet from a permanent residence, school, hospital, institution, or church in existence at the time of initial application. (Applies to temporary, emergency, or cavitation pits and below-grade tanks) - Visual inspection (certification) of the proposed site; Aerial photo; Satellite image	<input type="checkbox"/> Yes <input checked="" type="checkbox"/> No <input type="checkbox"/> NA
Within 1000 feet from a permanent residence, school, hospital, institution, or church in existence at the time of initial application. (Applies to permanent pits) - Visual inspection (certification) of the proposed site; Aerial photo; Satellite image	<input type="checkbox"/> Yes <input type="checkbox"/> No <input checked="" type="checkbox"/> NA
Within 500 horizontal feet of a private, domestic fresh water well or spring that less than five households use for domestic or stock watering purposes, or within 1000 horizontal feet of any other fresh water well or spring, in existence at the time of initial application. - NM Office of the State Engineer - iWATERS database search; Visual inspection (certification) of the proposed site	<input checked="" type="checkbox"/> Yes <input type="checkbox"/> No
Within incorporated municipal boundaries or within a defined municipal fresh water well field covered under a municipal ordinance adopted pursuant to NMSA 1978, Section 3-27-3, as amended. - Written confirmation or verification from the municipality; Written approval obtained from the municipality	<input checked="" type="checkbox"/> Yes <input type="checkbox"/> No
Within 500 feet of a wetland. - US Fish and Wildlife Wetland Identification map; Topographic map; Visual inspection (certification) of the proposed site	<input type="checkbox"/> Yes <input checked="" type="checkbox"/> No
Within the area overlying a subsurface mine. - Written confirmation or verification or map from the NM EMNRD-Mining and Mineral Division	<input type="checkbox"/> Yes <input checked="" type="checkbox"/> No
Within an unstable area. - Engineering measures incorporated into the design; NM Bureau of Geology & Mineral Resources; USGS; NM Geological Society; Topographic map	<input type="checkbox"/> Yes <input checked="" type="checkbox"/> No
Within a 100-year floodplain. - FEMA map	<input type="checkbox"/> Yes <input checked="" type="checkbox"/> No

11.

Temporary Pits, Emergency Pits, and Below-grade Tanks Permit Application Attachment Checklist: Subsection B of 19.15.17.9 NMAC**Instructions:** Each of the following items must be attached to the application. Please indicate, by a check mark in the box, that the documents are attached.

- ☒ Hydrogeologic Report (Below-grade Tanks) - based upon the requirements of Paragraph (4) of Subsection B of 19.15.17.9 NMAC
- ☐ Hydrogeologic Data (Temporary and Emergency Pits) - based upon the requirements of Paragraph (2) of Subsection B of 19.15.17.9 NMAC
- ☒ Siting Criteria Compliance Demonstrations - based upon the appropriate requirements of 19.15.17.10 NMAC
- ☒ Design Plan - based upon the appropriate requirements of 19.15.17.11 NMAC
- ☒ Operating and Maintenance Plan - based upon the appropriate requirements of 19.15.17.12 NMAC
- ☒ Closure Plan (Please complete Boxes 14 through 18, if applicable) - based upon the appropriate requirements of Subsection C of 19.15.17.9 NMAC and 19.15.17.13 NMAC

☐ Previously Approved Design (attach copy of design) API Number: _____ or Permit Number: _____

12.

Closed-loop Systems Permit Application Attachment Checklist: Subsection B of 19.15.17.9 NMAC**Instructions:** Each of the following items must be attached to the application. Please indicate, by a check mark in the box, that the documents are attached.

- ☐ Geologic and Hydrogeologic Data (only for on-site closure) - based upon the requirements of Paragraph (3) of Subsection B of 19.15.17.9
- ☐ Siting Criteria Compliance Demonstrations (only for on-site closure) - based upon the appropriate requirements of 19.15.17.10 NMAC
- ☐ Design Plan - based upon the appropriate requirements of 19.15.17.11 NMAC
- ☐ Operating and Maintenance Plan - based upon the appropriate requirements of 19.15.17.12 NMAC
- ☐ Closure Plan (Please complete Boxes 14 through 18, if applicable) - based upon the appropriate requirements of Subsection C of 19.15.17.9 NMAC and 19.15.17.13 NMAC

☐ Previously Approved Design (attach copy of design) API Number: _____

☐ Previously Approved Operating and Maintenance Plan API Number: _____ (Applies only to closed-loop system that use above ground steel tanks or haul-off bins and propose to implement waste removal for closure)

13.

Permanent Pits Permit Application Checklist: Subsection B of 19.15.17.9 NMAC**Instructions:** Each of the following items must be attached to the application. Please indicate, by a check mark in the box, that the documents are attached.

- ☐ Hydrogeologic Report - based upon the requirements of Paragraph (1) of Subsection B of 19.15.17.9 NMAC
- ☐ Siting Criteria Compliance Demonstrations - based upon the appropriate requirements of 19.15.17.10 NMAC
- ☐ Climatological Factors Assessment
- ☐ Certified Engineering Design Plans - based upon the appropriate requirements of 19.15.17.11 NMAC
- ☐ Dike Protection and Structural Integrity Design - based upon the appropriate requirements of 19.15.17.11 NMAC
- ☐ Leak Detection Design - based upon the appropriate requirements of 19.15.17.11 NMAC
- ☐ Liner Specifications and Compatibility Assessment - based upon the appropriate requirements of 19.15.17.11 NMAC
- ☐ Quality Control/Quality Assurance Construction and Installation Plan
- ☐ Operating and Maintenance Plan - based upon the appropriate requirements of 19.15.17.12 NMAC
- ☐ Freeboard and Overtopping Prevention Plan - based upon the appropriate requirements of 19.15.17.11 NMAC
- ☐ Nuisance or Hazardous Odors, including H₂S, Prevention Plan
- ☐ Emergency Response Plan
- ☐ Oil Field Waste Stream Characterization
- ☐ Monitoring and Inspection Plan
- ☐ Erosion Control Plan
- ☐ Closure Plan - based upon the appropriate requirements of Subsection C of 19.15.17.9 NMAC and 19.15.17.13 NMAC

14.

Proposed Closure: 19.15.17.13 NMAC**Instructions:** Please complete the applicable boxes, Boxes 14 through 18, in regards to the proposed closure plan.

Type: ☐ Drilling ☐ Workover ☐ Emergency ☐ Cavitation ☐ P&A ☐ Permanent Pit ☒ Below-grade Tank ☐ Closed-loop System

☐ Alternative

Proposed Closure Method: ☒ Waste Excavation and Removal

☐ Waste Removal (Closed-loop systems only)

☐ On-site Closure Method (Only for temporary pits and closed-loop systems)

☐ In-place Burial ☐ On-site Trench Burial

☐ Alternative Closure Method (Exceptions must be submitted to the Santa Fe Environmental Bureau for consideration)

15.

Waste Excavation and Removal Closure Plan Checklist: (19.15.17.13 NMAC) **Instructions:** Each of the following items must be attached to the closure plan. Please indicate, by a check mark in the box, that the documents are attached.

- ☒ Protocols and Procedures - based upon the appropriate requirements of 19.15.17.13 NMAC
- ☒ Confirmation Sampling Plan (if applicable) - based upon the appropriate requirements of Subsection F of 19.15.17.13 NMAC
- ☒ Disposal Facility Name and Permit Number (for liquids, drilling fluids and drill cuttings)
- ☒ Soil Backfill and Cover Design Specifications - based upon the appropriate requirements of Subsection H of 19.15.17.13 NMAC
- ☒ Re-vegetation Plan - based upon the appropriate requirements of Subsection I of 19.15.17.13 NMAC
- ☒ Site Reclamation Plan - based upon the appropriate requirements of Subsection G of 19.15.17.13 NMAC

16.

Waste Removal Closure For Closed-loop Systems That Utilize Above Ground Steel Tanks or Haul-off Bins Only: (19.15.17.13.D NMAC)

Instructions: Please indentify the facility or facilities for the disposal of liquids, drilling fluids and drill cuttings. Use attachment if more than two facilities are required.

Disposal Facility Name: _____ Disposal Facility Permit Number: _____

Disposal Facility Name: _____ Disposal Facility Permit Number: _____

Will any of the proposed closed-loop system operations and associated activities occur on or in areas that *will not* be used for future service and operations?

☐ Yes (If yes, please provide the information below) ☐ No

Required for impacted areas which will not be used for future service and operations:

☐ Soil Backfill and Cover Design Specifications - based upon the appropriate requirements of Subsection H of 19.15.17.13 NMAC

☐ Re-vegetation Plan - based upon the appropriate requirements of Subsection I of 19.15.17.13 NMAC

☐ Site Reclamation Plan - based upon the appropriate requirements of Subsection G of 19.15.17.13 NMAC

17.

Siting Criteria (regarding on-site closure methods only): 19.15.17.10 NMAC

Instructions: Each siting criteria requires a demonstration of compliance in the closure plan. Recommendations of acceptable source material are provided below. Requests regarding changes to certain siting criteria may require administrative approval from the appropriate district office or may be considered an exception which must be submitted to the Santa Fe Environmental Bureau office for consideration of approval. Justifications and/or demonstrations of equivalency are required. Please refer to 19.15.17.10 NMAC for guidance.

Ground water is less than 50 feet below the bottom of the buried waste.

- NM Office of the State Engineer - iWATERS database search; USGS; Data obtained from nearby wells

☐ Yes ☐ No
☐ NA

Ground water is between 50 and 100 feet below the bottom of the buried waste

- NM Office of the State Engineer - iWATERS database search; USGS; Data obtained from nearby wells

☐ Yes ☐ No
☐ NA

Ground water is more than 100 feet below the bottom of the buried waste.

- NM Office of the State Engineer - iWATERS database search; USGS; Data obtained from nearby wells

☐ Yes ☐ No
☐ NA

Within 300 feet of a continuously flowing watercourse, or 200 feet of any other significant watercourse or lakebed, sinkhole, or playa lake (measured from the ordinary high-water mark).

- Topographic map; Visual inspection (certification) of the proposed site

☐ Yes ☐ No

Within 300 feet from a permanent residence, school, hospital, institution, or church in existence at the time of initial application.

- Visual inspection (certification) of the proposed site; Aerial photo; Satellite image

☐ Yes ☐ No

Within 500 horizontal feet of a private, domestic fresh water well or spring that less than five households use for domestic or stock watering purposes, or within 1000 horizontal feet of any other fresh water well or spring, in existence at the time of initial application.

- NM Office of the State Engineer - iWATERS database; Visual inspection (certification) of the proposed site

☐ Yes ☐ No

Within incorporated municipal boundaries or within a defined municipal fresh water well field covered under a municipal ordinance adopted pursuant to NMSA 1978, Section 3-27-3, as amended.

- Written confirmation or verification from the municipality; Written approval obtained from the municipality

☐ Yes ☐ No

Within 500 feet of a wetland.

- US Fish and Wildlife Wetland Identification map; Topographic map; Visual inspection (certification) of the proposed site

☐ Yes ☐ No

Within the area overlying a subsurface mine.

- Written confirmation or verification or map from the NM EMNRD-Mining and Mineral Division

☐ Yes ☐ No

Within an unstable area.

- Engineering measures incorporated into the design; NM Bureau of Geology & Mineral Resources; USGS; NM Geological Society; Topographic map

☐ Yes ☐ No

Within a 100-year floodplain.

- FEMA map

☐ Yes ☐ No

18.

On-Site Closure Plan Checklist: (19.15.17.13 NMAC) **Instructions:** Each of the following items must be attached to the closure plan. Please indicate, by a check mark in the box, that the documents are attached.

☐ Siting Criteria Compliance Demonstrations - based upon the appropriate requirements of 19.15.17.10 NMAC

☐ Proof of Surface Owner Notice - based upon the appropriate requirements of Subsection F of 19.15.17.13 NMAC

☐ Construction/Design Plan of Burial Trench (if applicable) based upon the appropriate requirements of 19.15.17.11 NMAC

☐ Construction/Design Plan of Temporary Pit (for in-place burial of a drying pad) - based upon the appropriate requirements of 19.15.17.11 NMAC

☐ Protocols and Procedures - based upon the appropriate requirements of 19.15.17.13 NMAC

☐ Confirmation Sampling Plan (if applicable) - based upon the appropriate requirements of Subsection F of 19.15.17.13 NMAC

☐ Waste Material Sampling Plan - based upon the appropriate requirements of Subsection F of 19.15.17.13 NMAC

☐ Disposal Facility Name and Permit Number (for liquids, drilling fluids and drill cuttings or in case on-site closure standards cannot be achieved)

☐ Soil Cover Design - based upon the appropriate requirements of Subsection H of 19.15.17.13 NMAC

☐ Re-vegetation Plan - based upon the appropriate requirements of Subsection I of 19.15.17.13 NMAC

☐ Site Reclamation Plan - based upon the appropriate requirements of Subsection G of 19.15.17.13 NMAC

19.

Operator Application Certification:

I hereby certify that the information submitted with this application is true, accurate and complete to the best of my knowledge and belief.

Name (Print): Kim Champlin Title: Environmental Representative
 Signature: Kim Champlin Date: 12-8-08
 e-mail address: kim_champlin@xtoenergy.com Telephone: (505) 333-3100

20.

OCD Approval: ☐ Permit Application (including closure plan) ☒ Closure Plan (only) ☐ OCD Conditions (see attachment)

OCD Representative Signature: [Signature] Approval Date: 4/8/10
 Title: Environmental Engineer OCD Permit Number: _____

21.

Closure Report (required within 60 days of closure completion): Subsection K of 19.15.17.13 NMAC

Instructions: Operators are required to obtain an approved closure plan prior to implementing any closure activities and submitting the closure report. The closure report is required to be submitted to the division within 60 days of the completion of the closure activities. Please do not complete this section of the form until an approved closure plan has been obtained and the closure activities have been completed.

☐ Closure Completion Date: _____

22.

Closure Method:

☐ Waste Excavation and Removal ☐ On-Site Closure Method ☐ Alternative Closure Method ☐ Waste Removal (Closed-loop systems only)
☐ If different from approved plan, please explain.

23.

Closure Report Regarding Waste Removal Closure For Closed-loop Systems That Utilize Above Ground Steel Tanks or Haul-off Bins Only:

Instructions: Please indentify the facility or facilities for where the liquids, drilling fluids and drill cuttings were disposed. Use attachment if more than two facilities were utilized.

Disposal Facility Name: _____ Disposal Facility Permit Number: _____

Disposal Facility Name: _____ Disposal Facility Permit Number: _____

Were the closed-loop system operations and associated activities performed on or in areas that *will not* be used for future service and operations?

☐ Yes (If yes, please demonstrate compliance to the items below) ☐ No

Required for impacted areas which will not be used for future service and operations:

- ☐ Site Reclamation (Photo Documentation)
☐ Soil Backfilling and Cover Installation
☐ Re-vegetation Application Rates and Seeding Technique

24.

Closure Report Attachment Checklist: *Instructions: Each of the following items must be attached to the closure report. Please indicate, by a check mark in the box, that the documents are attached.*

- ☐ Proof of Closure Notice (surface owner and division)
☐ Proof of Deed Notice (required for on-site closure)
☐ Plot Plan (for on-site closures and temporary pits)
☐ Confirmation Sampling Analytical Results (if applicable)
☐ Waste Material Sampling Analytical Results (required for on-site closure)
☐ Disposal Facility Name and Permit Number
☐ Soil Backfilling and Cover Installation
☐ Re-vegetation Application Rates and Seeding Technique
☐ Site Reclamation (Photo Documentation)

On-site Closure Location: Latitude _____ Longitude _____ NAD: ☐ 1927 ☐ 1983

25.

Operator Closure Certification:

I hereby certify that the information and attachments submitted with this closure report is true, accurate and complete to the best of my knowledge and belief. I also certify that the closure complies with all applicable closure requirements and conditions specified in the approved closure plan.

Name (Print): _____ Title: _____
 Signature: _____ Date: _____
 e-mail address: _____ Telephone: _____

XTO Energy Inc.
San Juan Basin (Northwest New Mexico)
General Closure Plan
For Below-Grade Tanks

In accordance with Rule 19.15.17.13 NMAC the following information describes the closure requirements of below-grade tanks on XTO Energy Inc. (XTO) locations. This is XTO's standard procedure for all below-grade tanks. A separate plan will be submitted for any below-grade tank which does not conform to this plan.

General Plan

1. XTO will close below-grade tanks within the time periods provided in 19.15.17.13 NMAC, or by an earlier date that the division requires because of imminent danger to fresh water, public health or the environment.
2. XTO will close a below-grade tank that does not meet the requirements of Paragraphs (1) through (4) of Subsection I of 19.15.17.11 NMAC or is not included in Paragraph (5) of Subsection I of 19.15.17.11 NMAC within five years after June 16, 2008, if not retrofitted to comply with Paragraphs (1) through (4) of Subsection I of 19.15.17.11 NMAC.
3. XTO will close a permitted below-grade tank within 60 days of cessation of the below-grade tank's operation or as required by the transitional provisions of Subsection B of 19.15.17.17 NMAC in accordance with a closure plan that the appropriate division district office approves. The closure report will be filed on form C-144.
4. XTO will remove liquids and sludge from below-grade tanks prior to implementing a closure method and will dispose of the liquids and sludge in a division-approved facility. Approved facilities and waste streams include:
 - Envirotech Permit No. NM01-0011 and IEI Permit No. NM 01-0010B
 - Soil contaminated by exempt petroleum hydrocarbons
 - Produced sand, pit sludge and contaminated bottoms from storage of exempt wastes
 - Basin Disposal Permit No. NM01-005
 - Produced water
5. XTO will remove the below-grade tank and dispose of it in a division approved facility or recycle, reuse, or reclaim it in a manner that the appropriate division district office has approved prior to removal. Any associated liners will be removed, properly cleaned and disposed of per 19.15.9.712 NMAC at San Juan County Landfill. Documentation of the final disposition will be included in the closure report.
6. XTO will remove any on-site equipment associated with a below-grade tank unless the equipment is required for some other purpose.
7. XTO will test the soils beneath the below-grade tank to determine whether a release has occurred. At a minimum 5 point composite sample will be collected along with individual grab samples from any area that is wet, discolored or showing other evidence of a release. Samples will be

XTO Energy Inc.
San Juan Basin (Northwest New Mexico)
General Closure Plan
For Below-Grade Tanks
Page 2

analyzed for BTEX, TPH and chlorides to demonstrate that the benzene concentration, as determined by EPA SW-846 methods 8021B or 8260B or EPA method that the division approves, does not exceed 0.2 mg/kg; total BTEX concentration, as determined by EPA SW-846 methods 8021B or 8260B or other EPA method that the division approves, does not exceed 50 mg/kg; the TPH concentration, as determined by EPA method 418.1 or other EPA method that the division approves, does not exceed 100mg/kg; and the chloride concentration, as determined by EPA method 300.1 or other EPA method that the division approves, does not exceed 250 mg/kg, or the background concentration, whichever is greater. XTO will notify the division of its results on form C-141.

8. If XTO or the division determines that a release has occurred, XTO will comply with 19.15.3.116 NMAC and 19.15.1.19NMAC as appropriate.
9. If the sampling program demonstrates that a release has not occurred or that any release does not exceed the concentrations specified in Paragraph (4) of Subsection E of 19.15.17.13 NMAC, XTO will backfill the excavation with compacted, non-waste containing, earthen material; construct a division prescribed soil cover; recontour and re-vegetate the site.
10. Notice of Closure operations will be given to the Aztec Division District III office between 72 hours and one week prior to the start of closure activities via email or verbally. The notification will include the following:
 - i. Operator's name
 - ii. Well Name and API Number
 - iii. Location by Unit Letter, Section, Township, and Range

The surface owner shall also be notified prior to the implementation of any closure operations of below-grade tanks as per the approved closure plan using certified mail, return receipt requested.

11. Re-contouring of location will match fit, shape, line, form and texture of the surrounding area. Re-shaping will include drainage control, prevent ponding, and prevent erosion. Natural drainages will be unimpeded and water bars and/or silt traps will be placed in areas where needed to prevent erosion on a large scale. Final re-contour shall have a uniform appearance with smooth surface, fitting the natural landscape.
12. A minimum of 4 feet of cover shall be achieved and the cover shall include 1 foot of suitable material to establish vegetation at the site, or the background thickness of topsoil, whichever is greater. Soil cover will be constructed to the site's existing grade and ponding of water and erosion of the cover material will be prevented with drainage control, natural drainages and silt traps where needed.
13. XTO will seed the disturbed areas the first growing season after the operator closes the pit. Seeding will be accomplished via drilling on the contour whenever practical or by other division-approved methods. BLM or Forest Service stipulated seed mixes will be used on federal lands. Vegetative cover will equal 70% of the native perennial vegetative cover (un-impacted) consisting of at least three native plant species, including at least one grass, but not including noxious weeds, and maintain that cover through two successive growing seasons. Repeat seeding or planting will be continued until successful vegetative growth occurs.

XTO Energy Inc.
San Juan Basin (Northwest New Mexico)
General Closure Plan
For Below-Grade Tanks
Page 3

14. All closure activities will include proper documentation and be available for review upon request and will be submitted in closure report form to OCD within 60 days of closure of the below-grade tank. Closure report will be filed on form C-144 and incorporate the following:
 - i. Proof of closure notice to division and surface owner;
 - ii. Details on capping and covering, where applicable;
 - iii. Inspection reports;
 - iv. Confirmation sampling analytical results;
 - v. Disposal facility name(s) and permit number(s);
 - vi. Soil backfilling and cover installation;
 - vii. Re-vegetation application rates and seeding techniques, (or approved alternative to re-vegetation requirements if applicable);
 - viii. Photo documentation of the site reclamation.

NEW MEXICO
OIL CONSERVATION COMMISSION

Corrected
Gas Well Plat

Date 12-8-55

W. P. Carr
Operator

Thomas
Lease

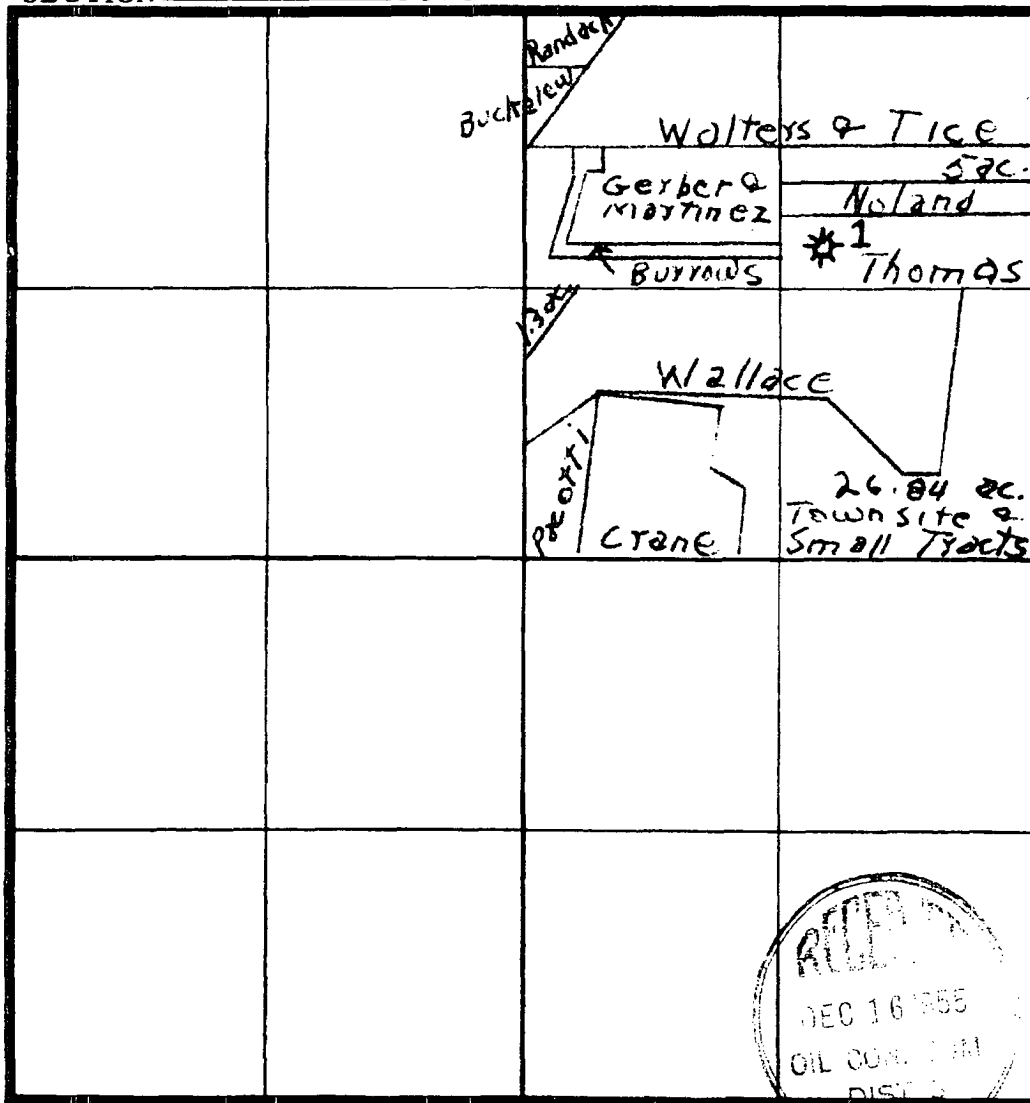
#1
Well No.

Name of Producing Formation Pictured Cliffs Pool Aztec Pictured Cliffs

No. Acres Dedicated to the Well 126.88

Indicate land status and show ownership

SECTION 9 TOWNSHIP 30 N RANGE 11 W



I hereby certify that the information given above is true and complete to the best of my knowledge.

Name W. P. Carr
Position Operator
Representing _____
Address 6700 Forest Lane
Dallas 30, Texas

(over)



**Pit Permit
Siting Criteria
Information Sheet**

Client:	XTO Energy
Project:	Pit Permits
Revised:	18-Nov-08
Prepared by:	Brooke Herb

API#: 3004509722

Name: THOMAS #1

Depth to groundwater: < 50 '

Distance to closest continuously flowing watercourse: 1522' E of the Animas River

Distance to closest significant watercourse, lakebed, playa lake, or sinkhole: 1609' W of Irrigation Ditch; 4801' E of Hampton Arroyo

Permanent residence, school, hospital, institution or church within 300': No

Domestic fresh water well or spring within 500': No

Any other fresh water well or spring within 1000': Yes - 656' SE of iWaters well SJ02975; 795' NE of SJ00364; 812' NW of SJ02290

Within incorporated municipal boundaries: Yes - Aztec

Within defined municipal fresh water well field: No

Wetland within 500': No

Within unstable area: No

Within 100 year flood plain: No FEMA Flood Zone Data within City Limits

USPLSS: T30N,R11W,S09A

Lat/Long: 36.83084, -107.99054

Geologic formation: Nacimiento Formation

Soil Type: Entisols

Annual Precipitation: 9.77 inches (Aztec)

Precipitation Notes: no significant precip events

Attached Documents: Groundwater report and Data; FEMA Flood Zone Map
Aerial Photo, Topo Map, Mines Mills and Quarries Map

Mining Activity: 5070' E of a Materials Pit

Additional Notes:

THOMAS #1 Below Ground Tank Siting Criteria and Closure Plan

Well Site Location

Legals: T30N, R11W, Section 09, Quarter Section A

Latitude/Longitude: approximately 36.83084, -107.99054

County: San Juan County, NM

General Description: near Hampton Arroyo

General Geology and Hydrology

The San Juan Basin is a typical Rocky Mountain basin with a gently dipping southern flank and a steeply dipping northern flank. Asymmetrically layered Tertiary sandstones and shales, along with Quaternary alluvial deposits dominate surficial geology (Dane and Bachman, 1965). The proposed below ground tank location will be located near Hampton Arroyo between the Animas and San Juan rivers. The Nacimiento Formation of Tertiary Age is exposed, along with Quaternary alluvial and aeolian sands within dry washes and arroyos.

Cretaceous and Tertiary sandstones, as well as Quaternary alluvial deposits serve as the primary aquifers in the San Juan basin (Stone et al., 1983). In most of the proposed area, the Nacimiento Formation lies at the surface. Thickness of the Nacimiento ranges from 418 to 2232 feet (Stone et al., 1983). Aquifers within the coarser and continuous sandstone bodies of the Nacimiento Formation are between 0 and 1000' deep in this section of the basin (Stone et al., 1983). Groundwater within these aquifers flows toward the nearby San Juan River and its tributaries.

The prominent soil type at the proposed site is entisols, which are defined as soils that do not show any profile development. Soils are basically unaltered from their parent rock. Miles of arroyos, washes and intermittent streams exist as part of the drainage network towards the La Plata River (www.emnrd.state.nm.us). These features often cut into soil and other unconsolidated materials, contributing to sedimentation downstream. The sudden influx of water from storm events easily erodes soils that cover the area.

The climate of the region is arid, averaging just over 8 inches of rainfall annually. As is typical of the southwestern United States monsoonal weather patterns, most precipitation falls from August through October. The heaviest rainfall occurs in the summer in isolated, intense cloudbursts. November through June is relatively dry. Snow generally falls from December to mid-February and averages less than one-half inch in depth. However, most recharge occurs during the winter months during snowmelt periods from the upper elevations (Western Regional Climate Center www.wrcc.dri.edu).

The predominant vegetation is sagebrush and grasses with a more restricted pinon-juniper association (Dick-Peddie, 1993).

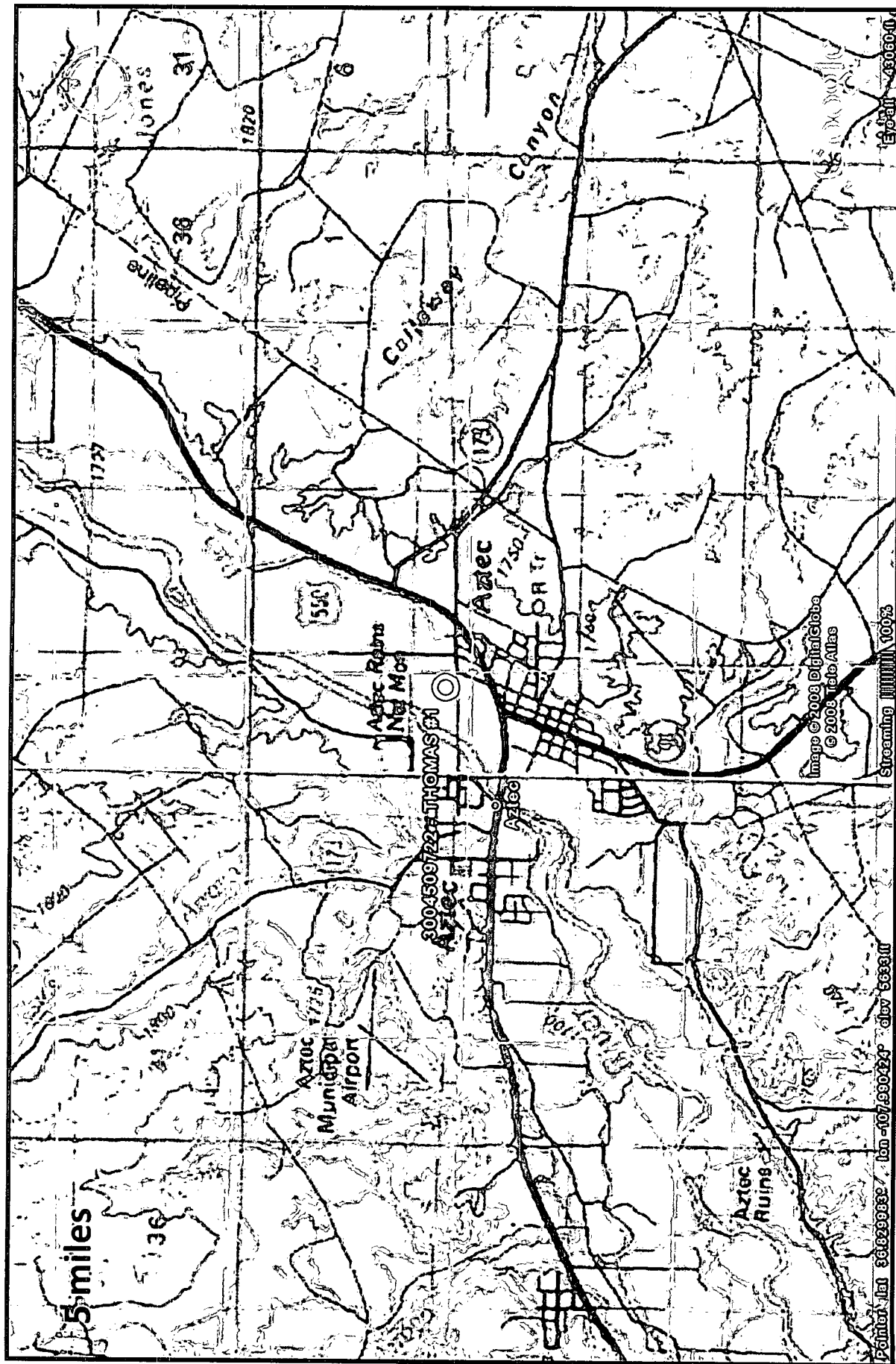
Site Specific Hydrogeology

Depth to groundwater is estimated to be less than 50 feet. This estimation is based on data from Stone and others, 1983 and depth to groundwater data published on the New Mexico State Engineer's iWaters Database website. Local topography and proximity to surface hydrologic features are also taken into consideration.

Local aquifers include sandstones within the Nacimiento Formation, which ranges from 0 to 1000 feet deep in this area, as well as shallow aquifers within Quaternary alluvial deposits (Stone et al., 1983). The 1000-foot depth range for Nacimiento aquifers covers an area over 20 miles wide, and depth decreases towards the margin of the San Juan Basin. The site in question is more centrally located, and depth to the aquifer is expected to be closer to 1000 feet. It is well known that groundwater close to the Animas River can be shallow, as the Quaternary deposits near the river itself form shallow aquifers. However, the proposed site is situated 1522 to the east of the Animas River, and is approximately 30 feet higher in elevation (Google Earth).

Groundwater data available from the NM State Engineer's iWaters Database for wells near the proposed site are attached. A map showing the location of wells in reference to the proposed pit location is also included. Pinpoints show locations of wells and the labels for each pinpoint indicate depth to groundwater in feet. Depth to groundwater within the nearby wells ranges from 5 feet to 50 feet below ground surface. The closest well to the proposed site is located approximately 656 feet to the northwest, and is approximately 15 feet lower in topographic elevation (Google Earth). Depth to groundwater within the well is 12 feet below ground surface. A well to the southwest is approximately 16 feet lower in elevation than the proposed site, and has a depth to groundwater of 20 feet below ground surface. This suggests that the depth to groundwater at the proposed site is less than 50 feet.

References





<p>Lodestar Services, Inc PO Box 4465 Durango, CO 81302</p>	<p>THOMAS #1 T30N, R11W, S09A San Juan County, NM</p>	<p>iWaters Groundwater Data Map</p>
---	---	---

New Mexico Office of the State Engineer
 POD Reports and Downloads

Township: Range: Sections:

POD / Surface Data Report: Avg Depth to Water Report: Water Column Report

WATER COLUMN REPORT 09/29/2008

(quarters are 1=NW 2=NE 3=SW 4=SE)
 (quarters are biggest to smallest)

POD Number	Tws	Rtg	Sec	q	q	q	q	Zone	X	Y	Depth Well	Depth Water	Water Column	Water (in feet)
RG 50669	30N	11W	27								360	310	50	
SJ 02765	30N	11W	02	1	3						54	20	34	
SJ 00975	30N	11W	02	1	3						60	20	40	
SJ 01217	30N	11W	02	1	3						60	30	30	
SJ 02837	30N	11W	02	3	4	1					150			
SJ 01437	30N	11W	03	1							40	25	12	
SJ 03121	30N	11W	03	1	2	4					36	12	24	
SJ 02049	30N	11W	03	1	3						26	8	18	
SJ 01339	30N	11W	03	1	3	1					40	15	25	
SJ 02814	30N	11W	03	1	3	2					31	8	23	
SJ 00350	30N	11W	03	1	3	2					46	12	34	
SJ 01441	30N	11W	03	1	3	2					48	20	28	
SJ 02835	30N	11W	03	1	3	2					26	6	16	
SJ 01387	30N	11W	03	1	4						40	18	22	
SJ 03698 POD1	30N	11W	03	1	4	1					40	5	35	
SJ 02785	30N	11W	03	1	4	2					31	5	26	
SJ 01313	30N	11W	03	2							70	58	12	
SJ 01805	30N	11W	03	2							35	20	15	
SJ 01807	30N	11W	03	2	1						50	30	20	
SJ 01202	30N	11W	03	2	1	2					35	8	27	
SJ 02781	30N	11W	03	2	1	2					48	23	25	
SJ 03758 POD1	30N	11W	03	2	1	2		268158	2127473		49	21	28	
SJ 03765 POD1	30N	11W	03	2	1	2		268183	2127605		43	20	23	

SJ 03756 PO01	30N	11W	03	2	1	2	288175	2127570	41	20	21
SJ 02786	30N	11W	03	2	3	1			51	24	27
SJ 01901	30N	11W	03	2	3	2			60	26	34
SJ 00698	30N	11W	03	2	3	3			44	14	30
SJ 01261	30N	11W	03	2	3	4				20	
SJ 02930	30N	11W	03	2	4	4			31	24	17
SJ 02798	30N	11W	03	2	4	4			30	21	15
SJ 00402	30N	11W	03	3					32	18	14
SJ 01734	30N	11W	03	3	2				33	5	28
SJ 00762	30N	11W	03	3	2				47	22	26
SJ 01440	30N	11W	03	3	2	3			41	21	20
SJ 01020	30N	11W	03	3	3				27	6	22
SJ 03242	30N	11W	03	3	3	1			23	5	14
SJ 03732 PO01	30N	11W	03	3	3	1			38	5	25
SJ 03239	30N	11W	03	3	3	3			33	12	21
SJ 01238	30N	11W	03	4	1				35	38	37
SJ 02245	30N	11W	03	4	1	3			66	30	36
SJ 01043	30N	11W	03	4	1	4			50	22	30
SJ 01249	30N	11W	03	4	2				52	60	36
SJ 02563	30N	11W	03	4	2	1			36	50	20
SJ 02824	30N	11W	03	4	2	1			70	60	20
SJ 03153	30N	11W	03	4	2	1			80	60	20
SJ 03454	30N	11W	03	4	2	4			100		
SJ 03291	30N	11W	03	4	3	2			38	18	20
SJ 00366	30N	11W	03	4	4	4			33	16	16
SJ 01364	30N	11W	04	2					116	36	39
SJ 03076	30N	11W	04	2	2	3			44	10	34
SJ 02903	30N	11W	04	2	3	2			45	31	18
SJ 03039	30N	11W	04	4	1	2			53	40	13
SJ 01450	30N	11W	04	4	3				45	20	25
SJ 02941	30N	11W	04	4	3	2			58	37	21
SJ 01367	30N	11W	04	4	4	1			48	20	26
SJ 03407	30N	11W	04	4	4	4			30	5	25
SJ 03267	30N	11W	05	2	1	3			33	60	23
SJ 03245	30N	11W	06	4	4	4			60	65	15
SJ 02194	30N	11W	07						35	22	37
SJ 02140	30N	11W	07	1	1	1			70	60	10
SJ 00689	30N	11W	07	1	4	3			78	85	13
SJ 00690	30N	11W	07	1	4	3			60		
SJ 00882	30N	11W	07	1	4	3			60	50	10

N 453700 2124100

SJ 00889	30N 11W 07	1 4 3	55	30	18
SJ 00806	30N 11W 07	1 4 3	38	58	12
SJ 00739	30N 11W 07	1 4 3	70	53	12
SJ 00389	30N 11W 07	1 4 3	53	53	12
SJ 00688	30N 11W 07	1 4 3	70	58	23
SJ 00358	30N 11W 07	1 4 3	51	38	21
SJ 00397	30N 11W 07	1 4 3	56	38	13
SJ 00415	30N 11W 07	1 4 3	53	40	13
SJ 00387	30N 11W 07	1 4 3	60	41	13
SJ 00748	30N 11W 07	1 4 3	43	27	22
SJ 03271	30N 11W 07	2 3 2	30	12	13
SJ 01475	30N 11W 07	2 3 3	26	22	33
SJ 03465	30N 11W 07	2 3 4	50	27	17
SJ 00259	30N 11W 07	2 4	44	30	20
SJ 01492	30N 11W 07	3	50	50	30
SJ 03794 P001	30N 11W 07	3 1 3	51	10	51
SJ 01172	30N 11W 07	3 2	59	24	44
SJ 01310	30N 11W 07	3 3	56	26	30
SJ 01484	30N 11W 07	3 3	73	24	26
SJ 03630	30N 11W 07	3 3 3	55	20	33
SJ 01425	30N 11W 07	3 4	48	20	43
SJ 01468	30N 11W 07	3 4	130	23	157
SJ 02006	30N 11W 07	3 4 2	50	14	36
SJ 03484	30N 11W 07	3 4 3	45	12	33
SJ 02005	30N 11W 07	3 4 4	38	30	3
SJ 02715	30N 11W 07	3 4 4	48	22	26
SJ 00135	30N 11W 07	4 1	52	35	17
SJ 00769	30N 11W 07	4 1	53	20	43
SJ 01406	30N 11W 07	4 1	59	23	35
SJ 02936	30N 11W 07	4 1 1	45	24	21
SJ 00679	30N 11W 07	4 1 3	38	40	40
SJ 00620	30N 11W 07	4 1 3	41	21	20
SJ 00329	30N 11W 07	4 1 3	40	16	26
SJ 00162	30N 11W 07	4 1 3	35	12	23
SJ 02906	30N 11W 07	4 1 4	38	22	16
SJ 00893	30N 11W 07	4 2	22	22	16
SJ 01667	30N 11W 07	4 3	52	20	38
SJ 01404	30N 11W 07	4 3	53	23	23
SJ 00919	30N 11W 07	4 3 2	59	22	38
SJ 00604	30N 11W 07	4 3 2	45	22	38

286272 2115320

SJ 00601	30N	11W	07	4	3	2	40	22	18
SJ 00918	30N	11W	07	4	3	2	38	14	21
SJ 00920	30N	11W	07	4	3	2	38	12	23
SJ 01567	30N	11W	07	4	4	2	38	14	21
SJ 00183	30N	11W	08	1	1	1	380	300	60
SJ 03154	30N	11W	08	1	1	4	40		
SJ 03431	30N	11W	08	1	4		50		
SJ 00332	30N	11W	08	2	2		52	34	18
SJ 01451	30N	11W	08	2	2		64	34	30
SJ 01968	30N	11W	08	2	2		40	28	18
SJ 01999	30N	11W	08	2	2		51	45	18
SJ 01814	30N	11W	08	2	2		52	10	42
SJ 03398	30N	11W	08	2	2	1	60	20	60
SJ 03210	30N	11W	08	2	2	2	60	30	30
SJ 03098	30N	11W	08	2	2	2	63	26	40
SJ 03381	30N	11W	08	2	2	2	50		
SJ 03240	30N	11W	08	2	2	2	50		
SJ 00220	30N	11W	08	2	2	3	60	36	24
SJ 03639	30N	11W	08	2	2	4	60	24	36
SJ 01115	30N	11W	08	2	2	4	55	26	3
SJ 03653	30N	11W	08	2	2	4	62	26	36
SJ 03646	30N	11W	08	2	2	4	61	24	37
SJ 00228	30N	11W	08	2	2	4	67	38	28
SJ 03202	30N	11W	08	2	4	2	48		
SJ 03030	30N	11W	08	2	4	2	56	40	18
SJ 03305	30N	11W	08	2	4	2	50		
SJ 03378	30N	11W	08	2	4	2	50		
SJ 02331	30N	11W	08	2	4	2	53	36	18
SJ 03303	30N	11W	08	2	4	2	55	30	26
SJ 02293	30N	11W	08	2	4	2	50	35	18
SJ 00249	30N	11W	08	2	4	2	46	30	18
SJ 01368	30N	11W	08	3	2		59	35	20
SJ 03089	30N	11W	08	3	2	4	48	36	12
SJ 03480	30N	11W	08	3	2	4	50		
SJ 03199	30N	11W	08	3	4	1	40	20	20
SJ 02413	30N	11W	08	3	4	1	40	31	5
SJ 02915	30N	11W	08	3	4	1	45		
SJ 03367	30N	11W	08	3	4	4	39	5	24
SJ 01570	30N	11W	08	4	1		59	37	22
SJ 00925	30N	11W	08	4	1	2	32	20	12

SJ 03642	30N	11W	02	4	1	2	38	32	28
SJ 01520	30N	11W	02	4	1	2	38	18	40
SJ 03313	30N	11W	02	4	1	4	38	20	38
SJ 02485	30N	11W	02	4	1	4	43	30	18
SJ 02261	30N	11W	02	4	3	2			
SJ 03419	30N	11W	02	4	4	2	41	9	32
SJ 02241	30N	11W	02	1			39	27	12
SJ 01560	30N	11W	02	1	1		38	26	10
SJ 01585	30N	11W	02	1	1		40	28	12
SJ 03499	30N	11W	02	1	1	1	38	12	41
SJ 02236	30N	11W	02	1	1	1	38	17	18
SJ 03304	30N	11W	02	1	1	2	38	30	26
SJ 03209	30N	11W	02	1	1	3	43	32	17
SJ 03726 POD1	30N	11W	02	1	1	3	47	30	17
SJ 03342	30N	11W	02	1	1	3	50	31	18
SJ 03225	30N	11W	02	1	1	4	50		
SJ 03229	30N	11W	02	1	1	4	50		
SJ 00924	30N	11W	02	1	2	2	46	18	30
SJ 00438	30N	11W	02	1	2	3	38	18	10
SJ 01169	30N	11W	02	1	3		38	23	23
SJ 01574	30N	11W	02	1	3		46	27	18
SJ 02237	30N	11W	02	1	3	1	48	28	20
SJ 03019	30N	11W	02	1	3	1	50	30	20
SJ 02493	30N	11W	02	1	3	1	49	28	23
SJ 03724 POD1	30N	11W	02	1	3	1	47	38	11
SJ 03031	30N	11W	02	1	3	1	58	38	20
SJ 01465	30N	11W	02	1	3	2	47		
SJ 02336	30N	11W	02	1	3	2	48	11	38
SJ 03482	30N	11W	02	1	3	2	50		
SJ 03423	30N	11W	02	1	3	3	50	20	30
SJ 00750	30N	11W	02	1	4		28	8	20
SJ 02975	30N	11W	02	2	1	4	37	12	28
SJ 03268	30N	11W	02	2	2	2	61	10	51
SJ 00364	30N	11W	02	2	3	2	50	20	30
SJ 03128	30N	11W	02	2	3	2	50		
SJ 00364 CLW263561	30N	11W	02	2	3	2	38	11	22
SJ 01955	30N	11W	02	2	4		40	11	28
SJ 02528	30N	11W	02	2	4		60	28	32
SJ 02290	30N	11W	02	2	4	2	48	18	30
SJ 00347	30N	11W	02			4	38		17

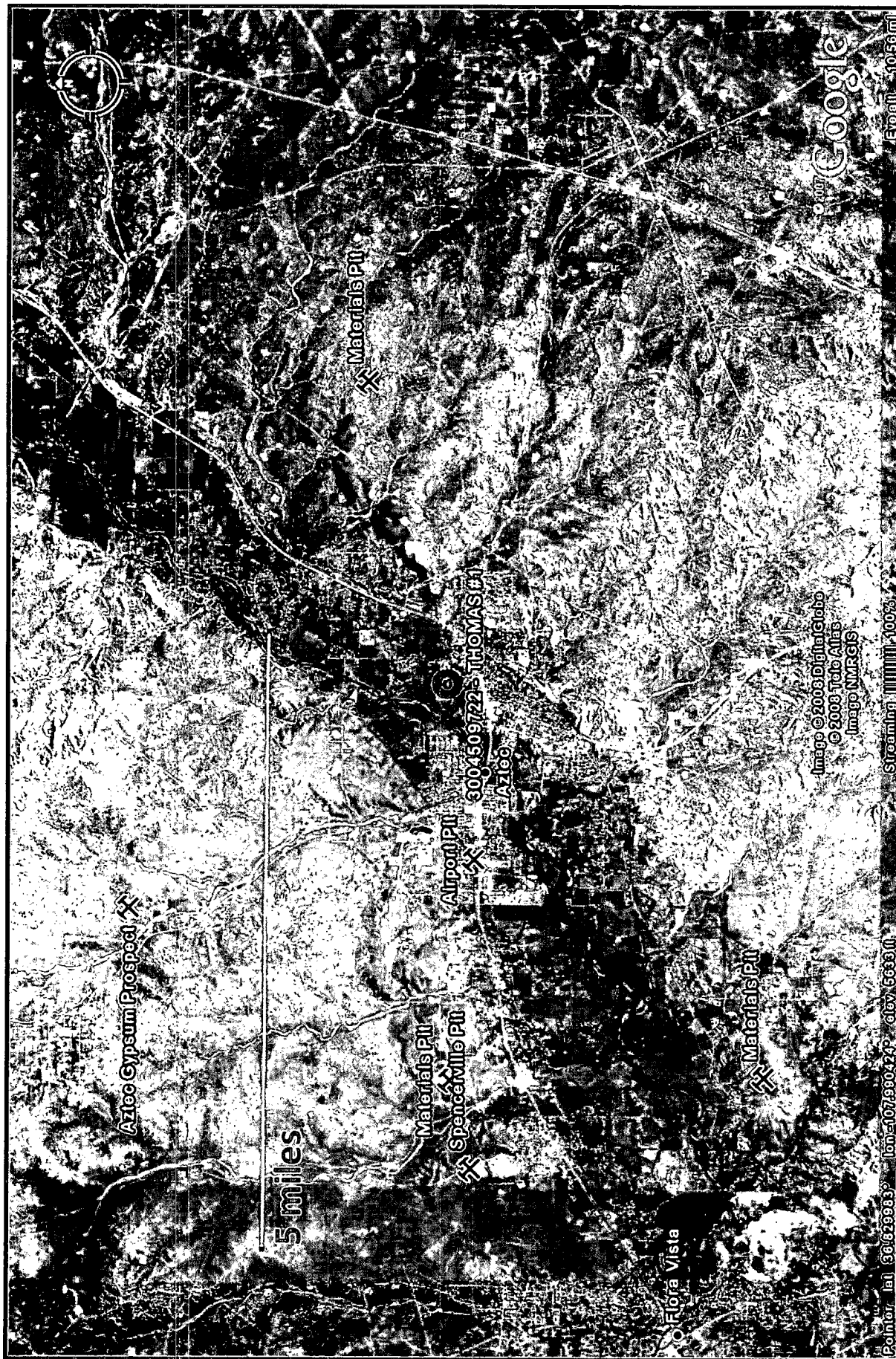
SJ 01436	30N	11W 09	4 1	210	50	180
SJ 03471	30N	11W 09	4 1	20	5	16
SJ 03223	30N	11W 09	4 2 2	59	26	34
SJ 03263	30N	11W 09	4 2 2	63	35	28
SJ 03374	30N	11W 09	4 3 1	44	29	18
SJ 02796	30N	11W 09	4 3 2	100		
SJ 03214	30N	11W 09	4 4 2	93	63	30
SJ 03213	30N	11W 09	4 4 2	100		
SJ 02176	30N	11W 10	1 3	57	37	20
SJ 03356	30N	11W 10	1 3 1	66	30	26
SJ 03258	30N	11W 10	1 3 3	55	10	45
SJ 03444	30N	11W 10	1 3 3	60		
SJ 03248	30N	11W 10	1 3 3	50	30	60
SJ 03354	30N	11W 10	1 3 3	60	30	50
SJ 00348	30N	11W 10	1 3 4	72	24	48
SJ 03032	30N	11W 10	1 4 1	60	30	50
SJ 02819	30N	11W 10	2 3 3	140	40	100
SJ 03282	30N	11W 10	2 3 4	70	30	40
SJ 03281	30N	11W 10	2 3 4	62	32	30
SJ 03572	30N	11W 10	3 1 2	70		
SJ 03218	30N	11W 10	3 3 3	50	30	20
SJ 01720	30N	11W 13	1 1 2	228	50	156
SJ 03745 POD1	30N	11W 13	1 3	323	150	175
SJ 01693	30N	11W 13	1 3	228	89	136
SJ 01672	30N	11W 13	1 3	180	80	100
SJ 01294	30N	11W 13	1 3 3	32	52	40
SJ 02773	30N	11W 16	1 1 3	46	25	21
SJ 00410	30N	11W 16	1 2	63	48	16
SJ 03010	30N	11W 16	1 3 1	60	40	40
SJ 03257	30N	11W 16	1 3 3	60	40	40
SJ 02923	30N	11W 16	1 3 3	75	40	35
SJ 03265	30N	11W 16	1 3 3	50	70	20
SJ 03310	30N	11W 16	1 3 3	56	20	36
SJ 01082	30N	11W 16	2 2 1	60	34	46
SJ 01722	30N	11W 17	1 1	20	6	12
SJ 01528	30N	11W 17	1 1	26	10	16
SJ 03373	30N	11W 17	1 1 3	50	35	15
SJ 01948	30N	11W 17	1 2	21	3	16
SJ 02817	30N	11W 17	1 2 2	15		
SJ 01722 POD2	30N	11W 17	1 2 4	17	3	14

266567 2116417

SJ 01401	30N	11W	18	1	3	44	12	32
SJ 03526	30N	11W	18	1	3	40		
SJ 03176	30N	11W	18	1	4	48	20	28
SJ 03177	30N	11W	18	1	4	37	18	22
SJ 03344	30N	11W	18	1	4	100	8	92
SJ 03801 POD1	30N	11W	18	2	2	21	8	18
SJ 03800 POD1	30N	11W	18	2	2	21	8	18
SJ 01639	30N	11W	18	2	2	40	18	22
SJ 02098	30N	11W	18	2	4	21	7	14
SJ 02109	30N	11W	18	2	4	19	4	18
SJ 02123	30N	11W	18	2	4	22	8	14
SJ 03290	30N	11W	18	2	4	40	10	30
SJ 02045	30N	11W	18	4	1	480	200	280
SJ 03322	30N	11W	18	4	4	40	10	30
SJ 03320	30N	11W	18	4	4	80		
SJ 03321	30N	11W	18	4	4	80		
SJ 02193	30N	11W	18				105	
SJ 03403	30N	11W	19	1	2	400		
SJ 00638	30N	11W	19	2	1	130	70	80
SJ 01073	30N	11W	19	2	1	100	38	82
SJ 03615	30N	11W	19	2	1	108	36	70
SJ 03434	30N	11W	19	2	1	140		
SJ 03088	30N	11W	19	2	1	120	80	40
SJ 01636	30N	11W	19	2	2	70	28	48
SJ 02862	30N	11W	19	2	2	20		
SJ 00284	30N	11W	19	3	1	200	38	188
SJ 03645	30N	11W	19	3	1	80	20	40
SJ 03533	30N	11W	19	3	1	20		
SJ 01621	30N	11W	19	3	2	40	38	2
SJ 02692	30N	11W	19	3	2	82	12	40
SJ 02968	30N	11W	19	3	2	78	8	70
SJ 02812	30N	11W	19	3	2	80		
SJ 01123	30N	11W	19	4	1	40	18	28
SJ 03437	30N	11W	19	4	1	30		
SJ 03315	30N	11W	19	4	1	80	84	8
SJ 00284 CLW222415	30N	11W	19	4	4	200	38	188
SJ 03224	30N	11W	30	1	2	80	30	80
SJ 03077	30N	11W	30	2	1	78	70	8
SJ 03668	30N	11W	30	2	1	380	280	100
SJ 03251	30N	11W	32	3	4	180	77	78



<p>Lodestar Services, Inc PO Box 4465 Durango, CO 81302</p>	<p>THOMAS #1 T30N, R11W, S09A San Juan County, NM</p>	<p>Aerial Photograph</p>
---	---	--------------------------



Lodestar Services, Inc
PO Box 4465
Durango, CO 81302

THOMAS #1
T30N, R11W, S09A
San Juan County, NM

Mines, Mills, and Quarries Map

XTO Energy Inc.
San Juan Basin (Northwest New Mexico)
General Design and Construction Plan
For Below-Grade Tanks

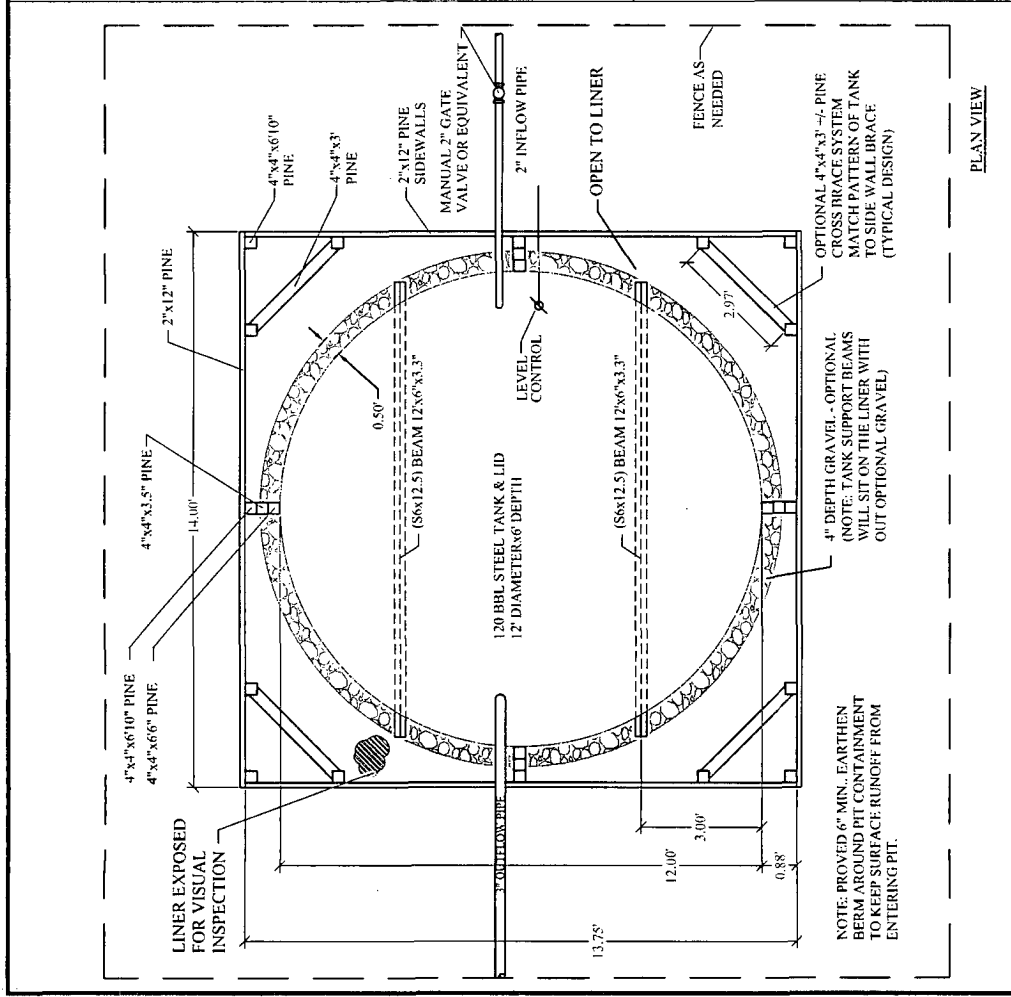
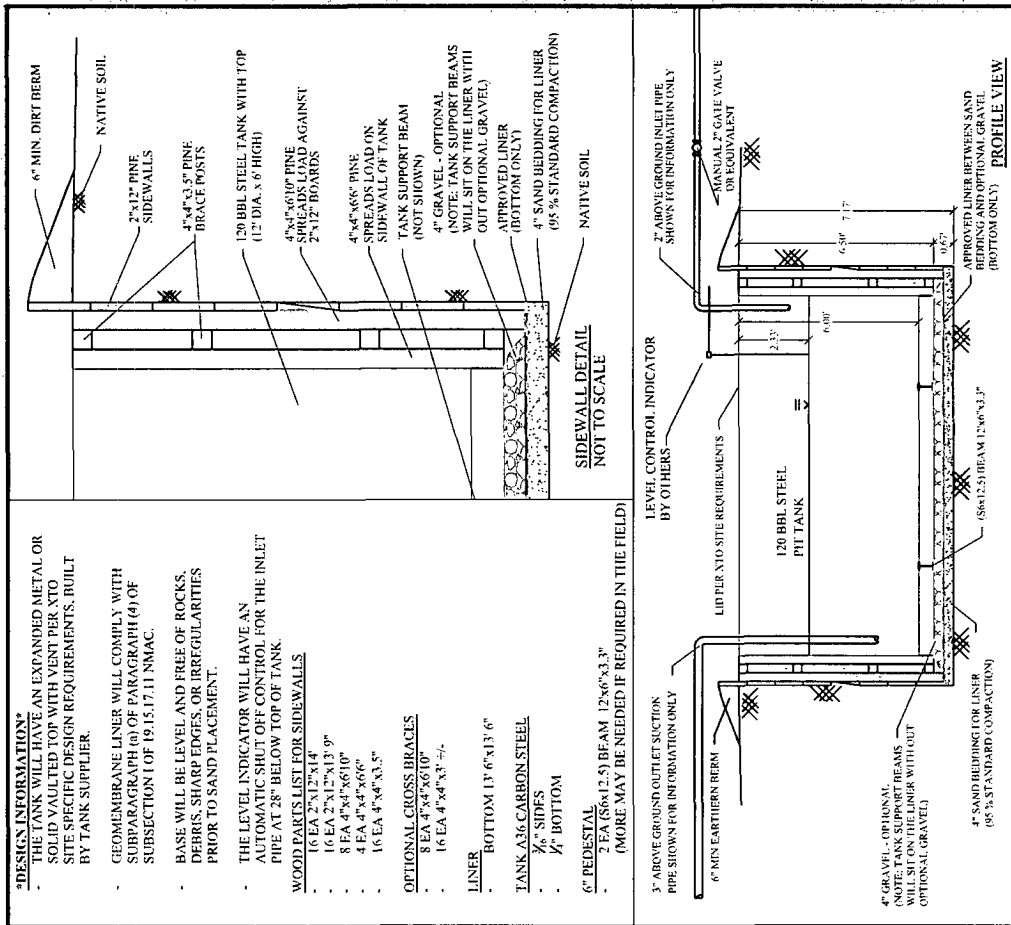
In accordance with Rule 19.15.17.11 NMAC the following information describes the design and construction of below-grade tanks on XTO Energy Inc. (XTO) locations. This is XTO's standard procedure for all below-grade tanks. A separate plan will be submitted for any below-grade tank which does not conform to this plan.

General Plan

1. XTO will design and construct below-grade tanks to contain liquids and solids and prevent contamination of fresh water and protect public health and environment.
2. XTO will post a well sign, in compliance with 19.15.3.103 NMAC, on the existing well site operated by XTO where the existing below-grade tank is located. The sign will list the Operator on record as the operator, the location of the well site by unit letter, section, township, range, and emergency telephone numbers.
3. XTO is requesting approval of an alternative fencing to be used on below-grade tank locations. Below-grade tank locations will be fenced utilizing 48" steel mesh field-fence (hogwire) with pipe railing along the top. A 6' chain link fence will be utilized around the well pad if the well site is within a city limits or ¼ mile of a permanent residence, school, hospital, institution or church. Below-grade tanks located within 1000' of a permanent residence, school, hospital, institution or church will be fenced by 6' chain link fence with at least two strands of barbed wire at the top. All gates associated with below-grade tanks will remain closed and locked when responsible individuals are not on site.
4. XTO shall construct below-grade tanks with an expanded metal covering or solid vaulted top on the top of the below-grade tank.
5. XTO will ensure that below-grade tanks are constructed of materials resistant to the below-grade tank's particular contents and resistant to damage from sunlight. Tanks will be constructed of A36 carbon steel with 3/16" sides and ¼" bottom. (See attached drawing).
6. The below-grade tank system will have a properly constructed foundation consisting of a level base free of rocks, debris, sharp edges or irregularities to prevent punctures, cracks or indentations of the liner or tank bottom. Sand bedding (4") will be placed on top of a level foundation to ensure prevention of punctures, cracks or indentations of the liner or tank bottom.
7. XTO will construct a berm and/or diversion ditch in a manner that prevents the collection of surface water run-on. Below-grade tanks will be equipped with automatic high level shut-off devices as well as manually operated shut-off valves. (See attached drawing).
8. XTO will construct and use below-grade tanks that do not have double walls. The below-grade tank sidewalls will be open for visual inspection for leaks. The sidewalls of the cellar will be constructed with 2" X 12" pine sidewalls and 4" X 4" pine brace posts. The below-grade tank

bottom will be elevated a minimum of 6" above the underlying ground surface and the below-grade tank will be underlain with a geomembrane liner to divert leaked liquid to a location that can be visually inspected. (See attached drawing).

9. XTO will equip below-grade tanks designed in this manner with a properly functioning automatic high-level shut-off control device and manual controls to prevent overflows. (See attached drawing).
10. XTO will demonstrate to the OCD that the geomembrane liner complies with the specifications of Subparagraph (a) of Paragraph (4) of Subsection I of 19.15.17.11 NMAC and obtain approval from OCD prior to the installation of the design. The geomembrane liner shall have a hydraulic conductivity no greater than 1×10^{-9} cm/sec. The geomembrane liner shall be composed of an impervious, synthetic material that is resistant to petroleum hydrocarbons, salts and acidics and alkaline solutions. The liner material shall be resistant to ultraviolet light. Liner compatibility shall comply with EPA SW-846 method 9090A. (See attached drawing).
11. The general specifications for design and construction are attached.



NOTE:

DRAFTED PER XTO DESIGN.

HIGH LEVEL SHUT OFF WILL BE SET AT 28\"/>

OUTER EDGE OF LINER WILL BE LEFT OPEN AND UNOBSTRUCTED TO ALLOW FOR VISUAL INSPECTION OF LINER FOR EVIDENCE OF SPILLS.

ADJUST DIMENSIONS AS NEED TO FIELD FIT TANK IF DIFFERENT THAN SHOWN. IF REQUIRED.

OWNER / OPERATOR:

XTO ENERGY

TYPICAL DESIGN

120 BBL PIT TANK

CONTAINMENT

XTO ENERGY

PROJ. NUMBER	DRAWING NUMBER	SCALE	REVISED
44-2012	XTO PIT TANK	AS SHOWN	

2.50\"/>

XTO Energy Inc.
San Juan Basin (Northwest New Mexico)
General Maintenance and Operating Plan
For Below-Grade Tanks

In accordance with Rule 19.15.17.12 NMAC the following information describes the operation and maintenance of below-grade tanks on XTO Energy Inc. (XTO) locations. This is XTO's standard procedure for all below-grade tanks. A separate plan will be submitted for any below-grade tank which does not conform to this plan.

General Plan

1. XTO will operate and maintain below-grade tanks to contain liquids and solids, maintain the integrity of the liner and secondary containment system, prevent contamination of fresh water and protect public health and the environment. Fluid levels will be monitored weekly and high levels will be removed as necessary. Monthly inspections will be conducted to monitor integrity of below-grade tank systems and below-grade tanks will be equipped with automatic high-level shut-off devices.
2. XTO will not allow below-grade tanks to overflow and will use berms and/or diversion ditch to prevent surface run on to enter the below-grade tank. Below-grade tanks will be equipped with automatic high-level shut-off control devices as well as manually operated shut-off valves. See attached drawing for vault design and placement of diversion berms and shut-off devices.
3. XTO will continuously remove any visible or measurable layer of oil from the fluid surface of below-grade tanks in order to prevent significant accumulation of oil.
4. XTO will inspect the below-grade tank monthly and maintain written records for five years. Monthly inspections will consist of documenting the following: (see attached template),
 - Well Name
 - API #
 - Sec., Twn., Rng.
 - XTO Inspector's name
 - Inspection date and time
 - Visible tears in liner
 - Visible signs of tank overflow
 - Collection of surface run on
 - Visible layer of oil
 - Visible signs of tank leak
 - Estimated freeboard
5. XTO will maintain adequate freeboard to prevent over topping of the below-grade tank. High level shut-off devices control the freeboard at an average of 28" beneath the top of the tank.
6. XTO will not discharge into or store any hazardous waste in any below-grade tank.
7. If a below-grade tank develops a leak, or if any penetration of a below-grade tank occurs below the liquids surface, XTO will remove all liquids above the damage or leak line within 48 hours,

XTO Energy Inc.
San Juan Basin (Northwest New Mexico)
General Maintenance and Operating Plan
For Below-Grade Tanks
Page 2

notify the appropriate division district office within 48 hours of the discovery and repair the damage or replace the below-grade tank. If an existing below-grade tank does not meet current requirements of Paragraphs 1-4 of Subsection I of 19.15.17.11 NMAC the tank will be modified or retrofitted to comply. If compliance can not be achieved XTO will implement the approved closure plan.

