

**RECEIVED**

**UNITED STATES  
DEPARTMENT OF THE INTERIOR  
BUREAU OF LAND MANAGEMENT**

**SEP 20 2010**

Sundry Notices and Reports on Wells

Farmington Field Office  
Bureau of Land Management

1. Type of Well  
GAS

2. Name of Operator  
**BURLINGTON**  
RESOURCES OIL & GAS COMPANY LP

3. Address & Phone No. of Operator

PO Box 4289, Farmington, NM 87499 (505) 326-9700

4. Location of Well, Footage, Sec., T, R, M

Surf: Unit G (SWNE), 1840' FNL & 1710' FEL, Section 24, T30N, R11W, NMPM

5. Lease Number  
SF-078171
6. If Indian, All. or  
Tribe Name
7. Unit Agreement Name
8. Well Name & Number  
Lloyd 2
9. API Well No.  
  
30-045-26641
10. Field and Pool  
  
Blanco MV
11. County and State  
San Juan Co., NM

**12. CHECK APPROPRIATE BOX TO INDICATE NATURE OF NOTICE, REPORT, OTHER DATA****Type of Submission**☒ Notice of Intent☐ Subsequent Report☐ Final Abandonment**Type of Action**☒ Abandonment☐ Recompletion☐ Plugging☐ Casing Repair☐ Altering Casing☐ Change of Plans☐ New Construction☐ Non-Routine Fracturing☐ Water Shut off☐ Conversion to Injection☐ Other -**RCVD SEP 24 '10****OIL CONS. DIV.****DIST. 3****13. Describe Proposed or Completed Operations**

Burlington Resources wishes to P&A the subject well per attached procedures and well bore schematic.

**14. I hereby certify that the foregoing is true and correct.**

Signed *Rhonda Rogers* Rhonda Rogers Title Staff Regulatory Technician Date 9/20/10

(This space for Federal or State Office use)

APPROVED BY Original Signed: Stephen Mason Title \_\_\_\_\_ Date **SEP 22 2010**

**CONDITION OF APPROVAL, if any:**

Title 18 U.S.C. Section 1001, makes it a crime for any person knowingly and willfully to make any department or agency of the United States any false, fictitious or fraudulent statements or representations as to any matter within its jurisdiction.

**Notify NMOCD 24 hrs  
prior to beginning  
operations**

**NMOCD**

# ConocoPhillips

## LLOYD 2

### Expense - P&A

Basin MV

Lat 36° 47' 58.056" N Long 107° 56' 21.012" W

API: 3004526641 1840 FNL - 1710 FEL, Spot G, Section 24 -T 030N - R 011W

Note: All cement volumes use 100% excess outside pipe and 50' excess inside. The stabilizing wellbore fluid will be 8.3 ppg, sufficient to balance all exposed formation pressures. All cement will be Class B, mixed at 15.6 ppg with a 1.18 cf/sx yield.

1. This project requires a NMOCD C-144 CLEZ Closed-Loop System Permit for the use of an A-Plus steel tank to handle waste fluids circulated from the well and cement wash up.

2. Install and test location rig anchors. Comply with all NMOCD, BLM, and Operator safety regulations. MOL and RU daylight pulling unit. Conduct safety meeting for all personnel on location. Record casing and bradenhead pressures. NU relief line and blow down well. ND wellhead and NU BOP. Function test BOP.

3. Rods: Yes ☐, No ☒, Unknown ☐.

Tubing: Yes ☐, No ☒.

Packer: Yes ☐, No ☒, Unknown ☐, Type .

4. Load casing and circulate well clean. Pressure test tubing to 1000 psi. Pressure test casing to 800#. If casing does not test, spot or tag subsequent plugs as necessary.

5. Plug #1 (Chacra top, <sup>3584' 3444'</sup>~~3684'-3784'~~): Mix 12 sxs Class B cement. TIH and spot balanced plug inside casing to cover the Chacra top. PUH.

→ 7' casing shoe <sup>3104' - 3004'</sup>

6. Plug #2 (Liner top @ 2887'): Mix 24 sxs Class B cement. TIH and spot balanced plug inside liner and casing to cover the liner top. PUH. (<sup>2792 2692</sup>~~2937-2837~~)

7. Plug #3 (Pictured Cliffs top, <sup>2642' - 2742'</sup>~~2642'-2742'~~): Mix 29 sxs Class B cement. Spot balanced plug inside casing to cover the Pictured Cliffs top. PUH.

8. Plug #4 (Fruitland top, <sup>2467 2367</sup>~~2262'-2362'~~): Mix 29 sxs Class B cement. Spot balanced plug inside casing to cover the Fruitland top. TOH with tubing.

9. Plug #5 (Kirtland and Ojo Alamo tops, <sup>1537 1283</sup>~~1318'-1512'~~): Perforate 3 holes at <sup>1537</sup>~~1512'~~. TIH and set a CR at <sup>1537</sup>~~1402'~~. Establish a rate into the squeeze holes. Mix 97 sxs Class B cement, squeeze ~~58~~ sxs outside the casing and leave 47 sxs inside casing to cover the Kirtland and Ojo Alamo tops. TOH with tubing.

10. Plug #6 (9-5/8" Surface casing shoe, 275'-Surface): Perforate 3 squeeze holes at 275'. Establish circulation out bradenhead with water and circulate the BH annulus clean. Mix approximately 100 sxs Class B cement with CaCl<sub>2</sub> and pump down the 4.5" casing to circulate good cement out bradenhead. Shut in well and WOC.

11. ND BOP and cut off wellhead below surface casing flange. Install P&A marker with cement to comply with regulations. RD, MOL and cut off anchors. Restore location per BLM stipulations.

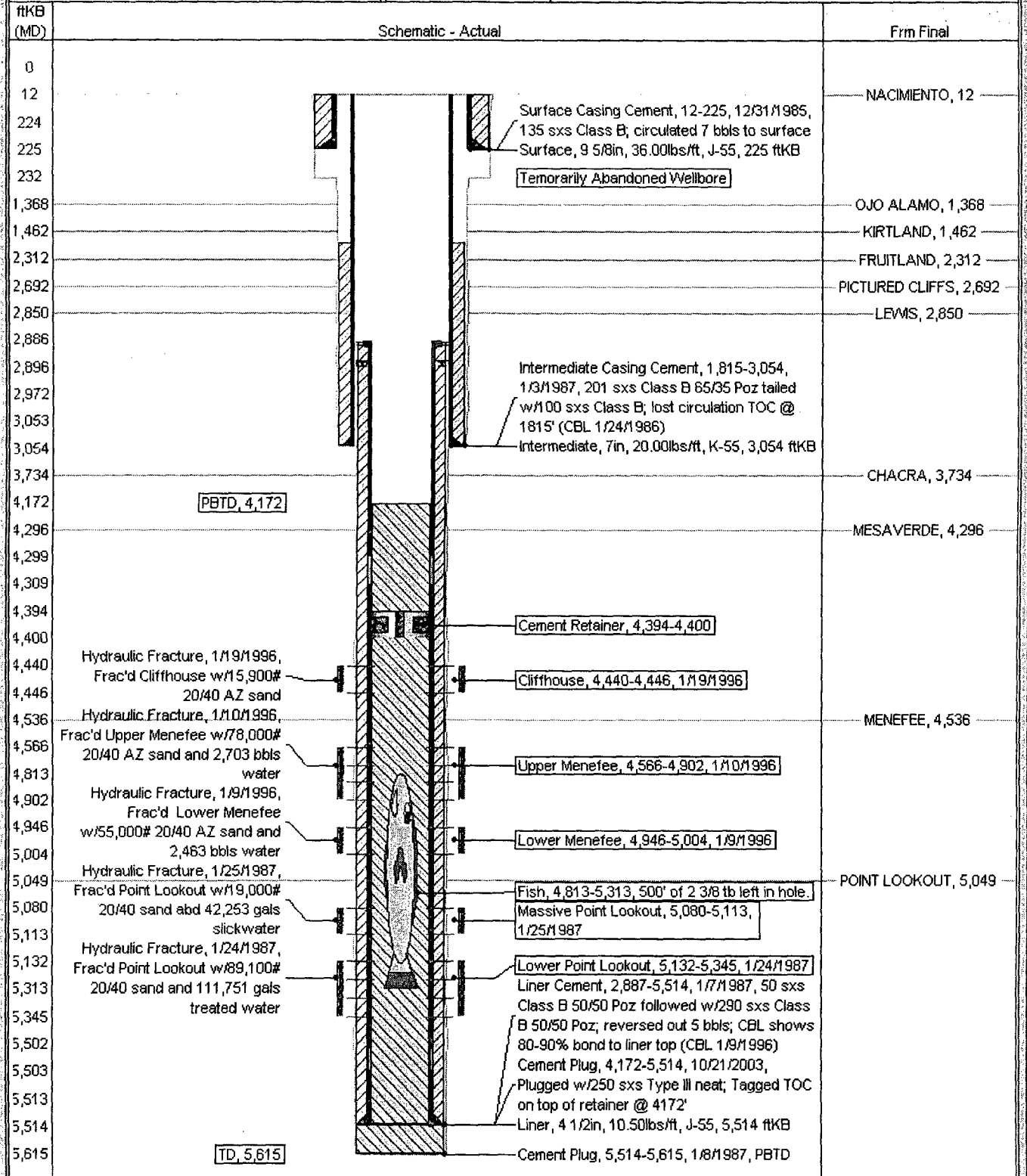
# Current Schematic

ConocoPhillips

Well Name: LLOYD #2

API / UNIT 3004526641	Surface Legal Location 13-07N 17-10E 24-03N-011W	Field Name BLANCO MV (PRO)	License No. #0072	State/Province NEW MEXICO	Well Configuration Type Edit
Ground Elevation (ft) 6,281.00	Original KB/RT Elevation (ft) 6,293.00	KB-Grond Distance (ft) 12.00	KB-Casing Flange Distance (ft) 6,293.00	KB-Tubing Hanger Distance (ft) 6,293.00	

Well Config: - 30045266410000, 8/25/2010 1:55:58 PM



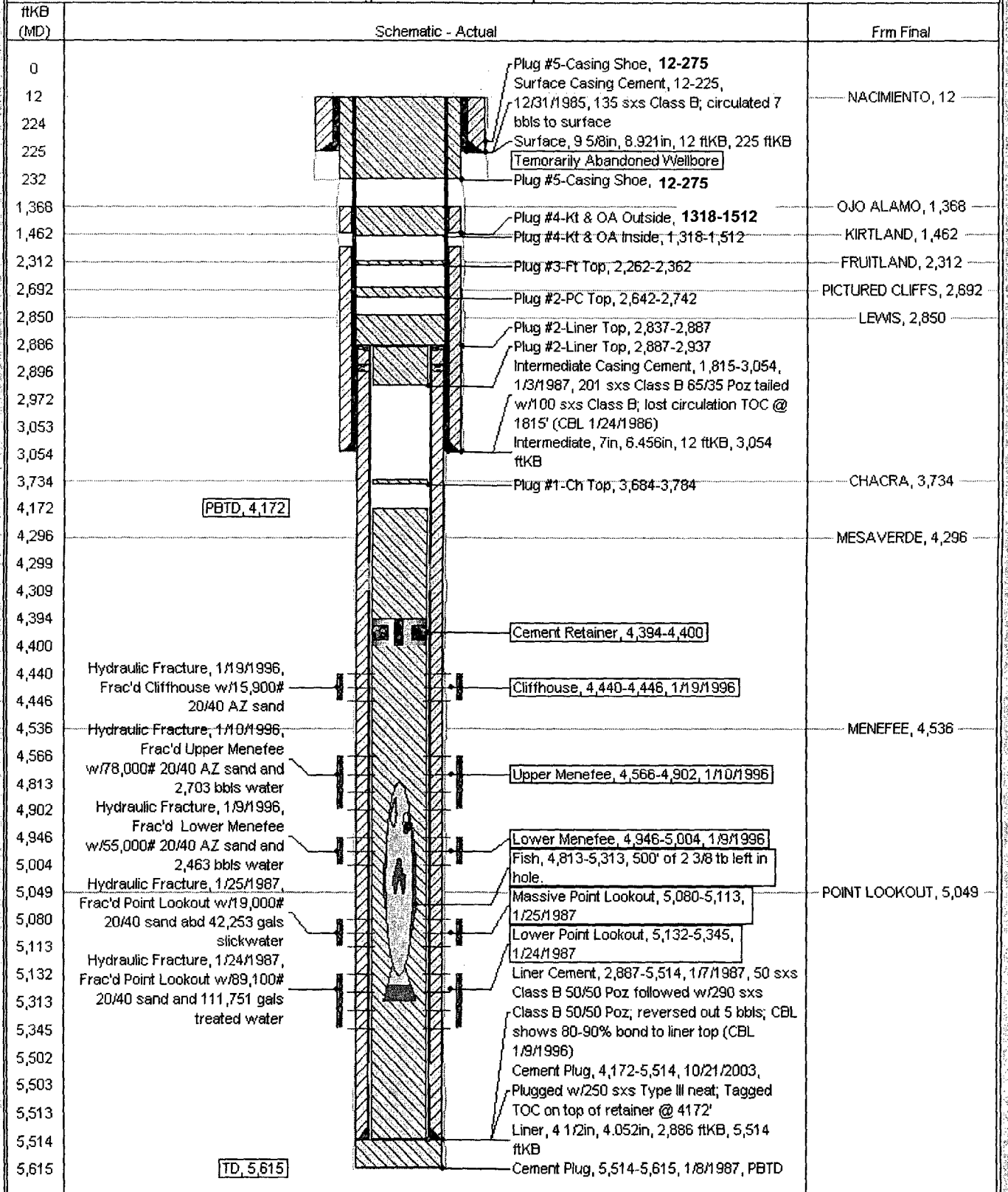
# Proposed Schematic

ConocoPhillips

LLOYD #2

District NORTH	Field Name BLANCO MV (PRO #0078)	API / UWI 3004526641	County SAN JUAN	State/Province NEW MEXICO	<a href="#">Edit</a>
Original Spud Date 12/31/1985	Surface Legal Location 1840'N 1710'E, 24-030N-011W	E/W Dist (ft) 1,710.00	E/W Ref E	N/S Dist (ft) 1,840.00	N/S Ref N

Well Config: - 30045266410000, 8/26/2010 10:34:28 AM



**UNITED STATES DEPARTMENT OF THE INTERIOR  
BUREAU OF LAND MANAGEMENT  
FARMINGTON DISTRICT OFFICE  
1235 LA PLATA HIGHWAY  
FARMINGTON, NEW MEXICO 87401**

Attachment to notice of  
Intention to Abandon:

Re: Permanent Abandonment  
Well: 2 Lloyd

**CONDITIONS OF APPROVAL**

1. Plugging operations authorized are subject to the attached "General Requirements for Permanent Abandonment of Wells on Federal and Indian Lease."
2. Farmington Office is to be notified at least 24 hours before the plugging operations commence (505) 599-8907.
3. The following modifications to your plugging program are to be made:
  - a) Place the Chacra plug from 3584' – 3484'.
  - b) Place a cement plug from 3104' – 3004' to cover the 7" casing shoe.
  - c) Place the 4 ½" Liner top plug from 2937' – 2837'.
  - d) Place the Pictured Cliffs plug from 2792' – 2692'.
  - e) Place the Fruitland plug from 2467' – 2367'.
  - f) Place the Kirtland/Ojo Alamo plug from 1537' – 1283' inside and outside the 7" casing.
  - g) You are required to have H2S monitoring equipment and personnel on location during plugging operations.

You are also required to place cement excesses per 4.2 and 4.4 of the attached General Requirements.

Office Hours: 7:45 a.m. to 4:30 p.m.