

submitted in lieu of Form 3160-5
**UNITED STATES
DEPARTMENT OF THE INTERIOR
BUREAU OF LAND MANAGEMENT**

RECEIVED

OCT 28 2010

Sundry Notices and Reports on Wells

Farmington Field Office
Bureau of Land Management

1. Type of Well
GAS

5. Lease Number
SF-065557-A
6. If Indian, All. or
Tribe Name
7. Unit Agreement Name

2. Name of Operator
BURLINGTON
RESOURCES OIL & GAS COMPANY LP

3. Address & Phone No. of Operator

8. Well Name & Number
Cornell 1R

PO Box 4289, Farmington, NM 87499 (505) 326-9700

9. API Well No.

30-045-30447

4. Location of Well, Footage, Sec., T, R, M

Unit H (SENE), 1640' FNL & 1030' FEL, Section 12, T29N, R12W, NMPM

10. Field and Pool
Fulcher Kutz Pictured Cliffs
11. County and State
San Juan, NM

12. CHECK APPROPRIATE BOX TO INDICATE NATURE OF NOTICE, REPORT, OTHER DATA

Type of Submission

Type of Action

☒ Notice of Intent

☒ Abandonment

☐ Change of Plans

☐ Other --

☐ Subsequent Report

☐ Recompletion

☐ New Construction

☐ Plugging

☐ Non-Routine Fracturing

☐ Final Abandonment

☐ Casing Repair

☐ Water Shut off

☐ Altering Casing

☐ Conversion to Injection

13. Describe Proposed or Completed Operations

Burlington Resources requests permission to P&A the subject well per the attached procedure, current and proposed wellbore schematic.

Notify NMOCD 24 hrs
prior to beginning
operations

RCVD NOV 2 '10
OIL CONS. DIV.
DIST. 3

14. I hereby certify that the foregoing is true and correct.

Signed Crystal Tafoya Crystal Tafoya

Title: Staff Regulatory Technician

Date 10/27/2010

(This space for Federal or State Office use)

APPROVED BY Original Signed: Stephen Mason Title _____

Date OCT 29 2010

CONDITION OF APPROVAL, if any:

Title 18 U.S.C. Section 1001, makes it a crime for any person knowingly and willfully to make any department or agency of the United States any false, fictitious or fraudulent statements or representations as to any matter within its jurisdiction.

NMOCD

ABANDONMENT PROCEDURE

September 22, 2010

Cornell 1R (PC)

Aztec Pictured Cliffs

1640' FNL and 1030' FEL, Unit H Section 12, T29N, R12W

San Juan County, New Mexico / API 30-045-30447

Lat: 36° 44' 34.476" N/ Long: 108° 2' 39.48" W NAD 27

Note: All cement volumes use 100% excess outside pipe and 50' excess inside. The stabilizing wellbore fluid will be 8.3 ppg, sufficient to balance all exposed formation pressures. All cement will be Class B, mixed at 15.6 ppg with a 1.18 cf/sx yield.

1. This project requires a NMOCD C-144 CLEZ Closed-Loop System Permit for the use of an A-Plus steel tank to handle waste fluids circulated from the well and cement wash up.
2. Install and test location rig anchors. Prepare blow pit. Comply with all NMOCD, BLM, and Operator safety regulations. Conduct safety meeting for all personnel on location. NU relief line. Blow down well and kill with water as necessary. ND wellhead and install valve.
3. Open bradenhead valve. Establish rate down 2.875" casing with 20 bbls water, record pump rate and pressure. Monitor bradenhead for flow. If no flow or blow, then pump 6 - 7/8" RCN balls in additional water and monitor pressure, rate and volumes pumped, to confirm perforations are taking water and there is not a casing leak. If the bradenhead flows water or there are other indications of a casing leak, then MO and RU pulling unit to use 1-1/4" IJ tubing workstring to plug this well.
4. Connect the pump line to the bradenhead valve. Load the BH annulus with water, note the volume. Pressure test the bradenhead annulus to 300#. If it tests, then continue to step 5. If the bradenhead annulus does not test, then set plug #1 in step 5, but displace to the appropriate depth with water down the 2.875" casing. After WOC, perforate at the appropriate depth. Establish circulation to surface out the bradenhead valve. Then circulate cement to fill the BH annulus to the surface, circulate cement out the bradenhead valve, shut in the casing and WOC.
5. **Plug #1 (Pictured Cliffs perforations and Fruitland, Kirtland, Ojo Alamo tops and surface casing shoe, 2057' - Surface):** Establish rate into PC perforations with water. Mix and pump total of 92 sxs cement (long plug, 30% excess) and bullhead the down 2.875" casing: first pump 10 sxs cement, then drop 10 RCN balls, then pump 82 sxs cement and do not displace. Double valve and shut in well. WOC. Tag cement.
6. ND cementing valves and cut off wellhead. Fill 2.875" casing with cement as necessary. Install P&A marker to comply with regulations. RD, MOL, cut off anchors, and restore location.

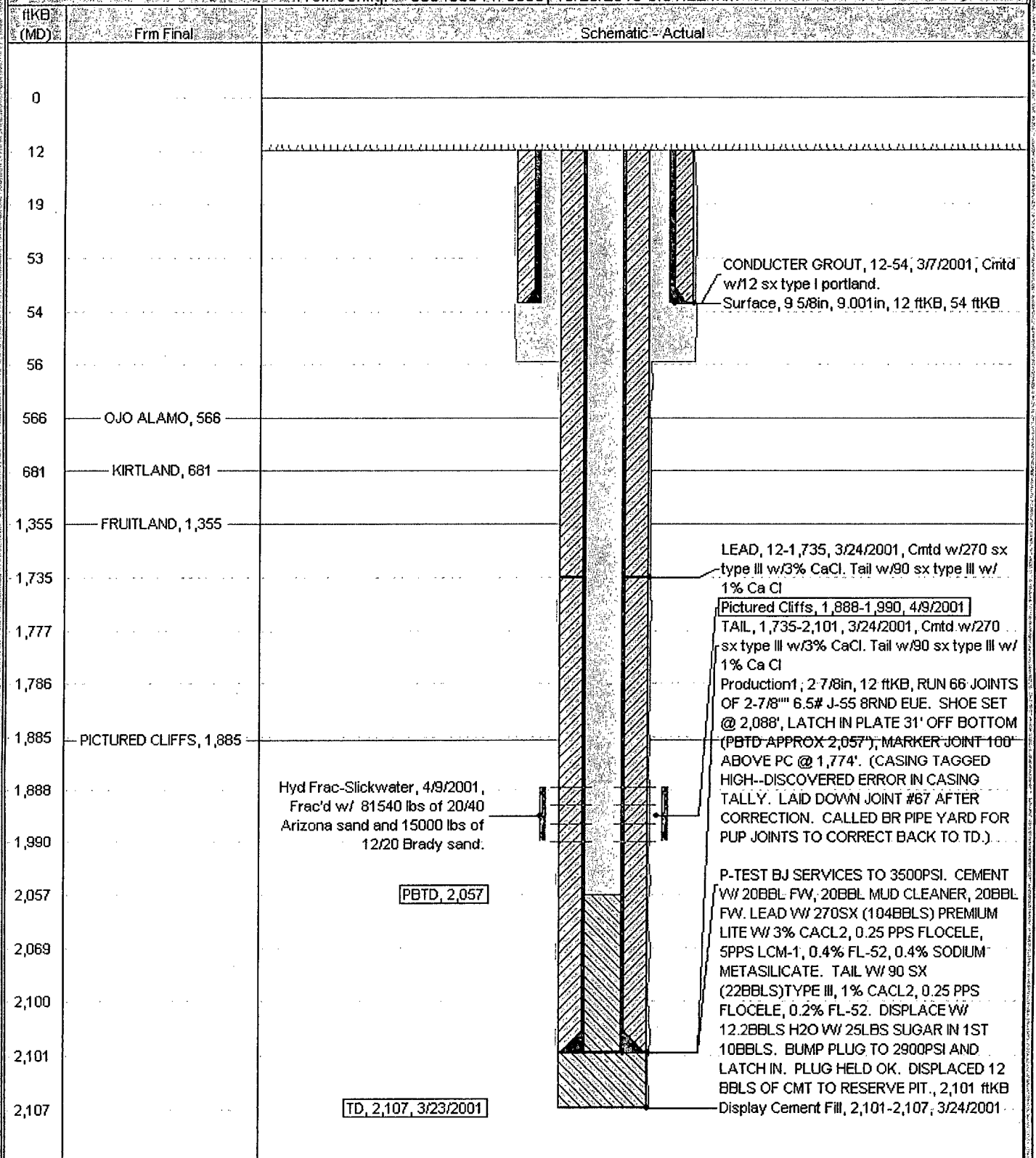
Current Schematic

ConocoPhillips

Well Name: CORNELL #1R

API / UWI	Service Legal Location	Field Name	License No.	State/Province	Well Configuration Type	Edit
3004530447	NMPM,012-029N-012W	FULCHER KUTZ PC (G...		NEW MEXICO		
Ground Elevation (ft)	Original KB/RT Elevation (ft)	KB-Grnd Distance (ft)	KB-Casing Flange Distance (ft)	KB-Tubing Hanger Distance (ft)		
5,735.00	5,747.00	12.00	5,747.00	5,747.00		

Well Config: 30045304470000, 10/26/2010 8:31:22 AM



Proposed schematic

ConocoPhillips

Well Name: CORNELL #1R

API/UWI:	Surface Legal Location:	Field Name:	License No.:	State/Province:	Well Configuration Type:	Edit
3004530447	NMPM,012-029N-012VV	FULCHER KUTZ PC (G...)		NEW MEXICO		
Ground Elevation (ft):	Original K&RT Elevation (ft):	K&RT Ground Distance (ft):	K&RT Casing Hanger Distance (ft):	K&RT Tubing Hanger Distance (ft):		
5,735.00	5,747.00	12.00	5,747.00	5,747.00		

Well Config: 30045304470000, 1/1/2020

ftKB (MD)	Frm Final	Schematic - Actual
0		
12		
19		
53		
54		CONDUCTOR GROUT, 12-54, 3/7/2001, Cmt'd w/12 sx type I portland. Surface, 9 5/8in, 9.001in, 12 ftKB, 54 ftKB
56		
566	OJO ALAMO, 566	
681	KIRTLAND, 681	
1,355	FRUITLAND, 1,355	
1,735		LEAD, 12-1,735, 3/24/2001, Cmt'd w/270 sx type III w/3% CaCl. Tail w/90 sx type III w/ 1% CaCl
1,777		Pictured Cliffs, 1,888-1,990, 4/9/2001 Plug #1, 12-2,057, 1/1/2020, Mix and pump w/ 92 sxs of Class B cement to cover PC perforations, Fruitland, Kirtland, Ojo Alamo tops and surface casing shoe. TAIL, 1,735-2,101, 3/24/2001, Cmt'd w/270 sx type III w/3% CaCl. Tail w/90 sx type III w/ 1% CaCl
1,786		Production1; 2 7/8in, 12 ftKB, RUN 66 JOINTS OF 2-7/8" 6.5# J-55 8RND EUE. SHOE SET @ 2,088', LATCH IN PLATE 31' OFF BOTTOM (PBTD APPROX 2,057'), MARKER JOINT 100' ABOVE PC @ 1,774'. (CASING TAGGED HIGH--DISCOVERED ERROR IN CASING TALLY. LAID DOWN JOINT #67 AFTER CORRECTION. CALLED BR PIPE YARD FOR PUP JOINTS TO CORRECT BACK TO TD.)
1,885	PICTURED CLIFFS, 1,885	
1,888	Hyd Frac-Slickwater, 4/9/2001, Frac'd w/ 81540 lbs of 20/40 Arizona sand and 15000 lbs of 12/20 Brady sand:	
1,990		
2,057		PBTD, 2,057
2,069		
2,100		
2,101		
2,107		P-TEST BJ SERVICES TO 3500PSI. CEMENT W/ 20BBL FW, 20BBL MUD CLEANER, 20BBL FW. LEAD W/ 270SX (104BBL) PREMIUM LITE W/ 3% CaCl2, 0.25 PPS FLOCELE, 5PPS LCM-1, 0.4% FL-52, 0.4% SODIUM METASILICATE. TAIL W/ 90 SX (22BBL) TYPE III, 1% CaCl2, 0.25 PPS FLOCELE, 0.2% FL-52. DISPLACE W/ 12.2BBL H2O W/ 25LBS SUGAR IN 1ST 10BBL. BUMP PLUG TO 2900PSI AND LATCH IN. PLUG HELD OK. DISPLACED 12 BBL OF CMT TO RESERVE PIT., 2,101 ftKB Display Cement Fill, 2,101-2,107, 3/24/2001
		TD, 2,107, 3/23/2001