

District I  
1625 N. French Dr., Hobbs, NM 88240  
District II  
1301 W. Grand Avenue, Artesia, NM 88210  
District III  
1000 Rio Brazos Rd., Aztec, NM 87410  
District IV  
1220 S. St. Francis Dr., Santa Fe, NM 87505

State of New Mexico  
Energy, Minerals & Natural Resources Department  
**OIL CONSERVATION DIVISION**  
1220 South St. Francis Dr.  
Santa Fe, NM 87505

Form C-102  
Revised July 16, 2010  
Submit one copy to appropriate  
District Office

☐ AMENDED REPORT

**WELL LOCATION AND ACREAGE DEDICATION PLAT**

<sup>1</sup> API Number 30-039-22104	<sup>2</sup> Pool Code 82329	<sup>3</sup> Pool Name Otero Chacra
<sup>4</sup> Property Code	<sup>5</sup> Property Name Jicarilla H	<sup>6</sup> Well Number Jicarilla H 108
<sup>7</sup> OGRID No. 5578	<sup>8</sup> Operator Name DJ Simmons, Inc.	<sup>9</sup> Elevation 6742 GL

**<sup>10</sup> Surface Location**

UL or lot no. K	Section 7	Township 24N	Range 4W	Lot Idn	Feet from the 2150	North/South line South	Feet from the 1600	East/West line West	County Rio Arriba
--------------------	--------------	-----------------	-------------	---------	-----------------------	---------------------------	-----------------------	------------------------	----------------------

**<sup>11</sup> Bottom Hole Location If Different From Surface**

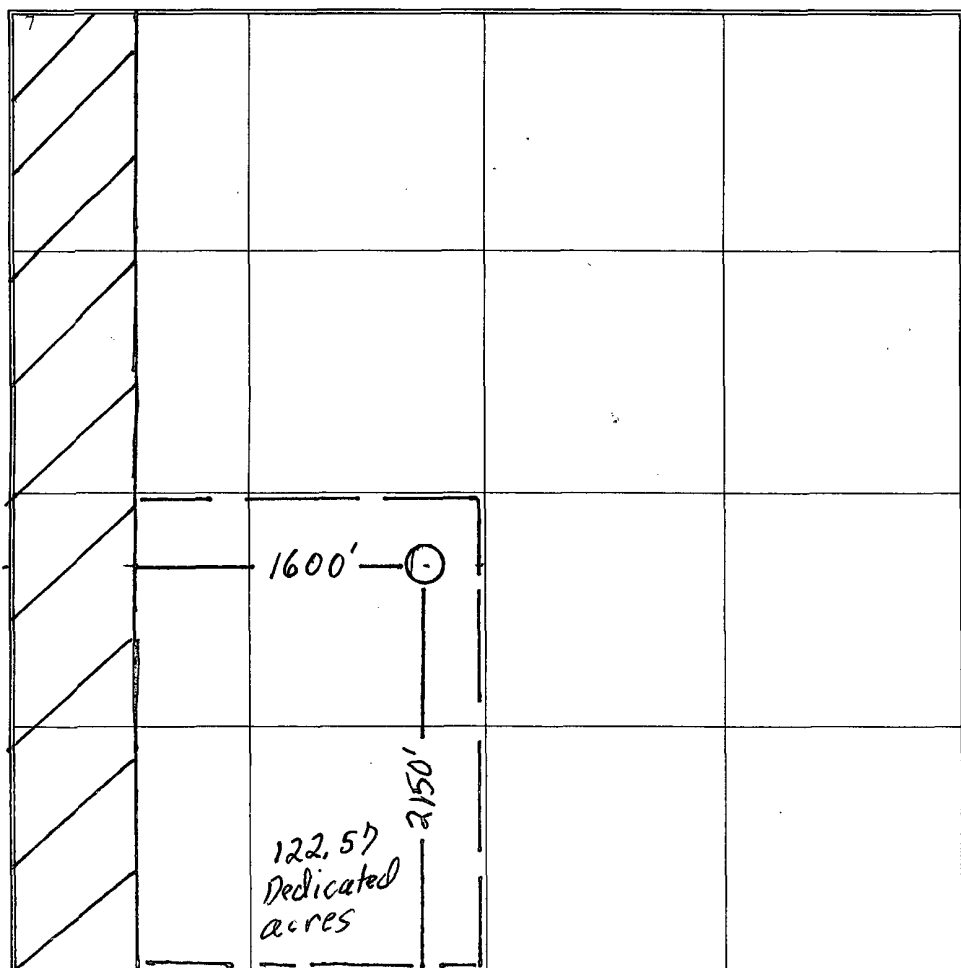
UL or lot no.	Section	Township	Range	Lot Idn	Feet from the	North/South line	Feet from the	East/West line	County
---------------	---------	----------	-------	---------	---------------	------------------	---------------	----------------	--------

<sup>12</sup> Dedicated Acres 122.57	<sup>13</sup> Joint or Infill	<sup>14</sup> Consolidation Code	<sup>15</sup> Order No.
---	-------------------------------	----------------------------------	-------------------------

RCVD DEC 8 '10  
OIL CONS. DIV.

DIST. 3

No allowable will be assigned to this completion until all interests have been consolidated or a non-standard unit has been approved by the division.

	<p><b><sup>17</sup> OPERATOR CERTIFICATION</b></p> <p>I hereby certify that the information contained herein is true and complete to the best of my knowledge and belief, and that this organization either owns a working interest or unleased mineral interest in the land including the proposed bottom hole location or has a right to drill this well at this location pursuant to a contract with an owner of such a mineral or working interest, or to a voluntary pooling agreement or a compulsory pooling order heretofore entered by the division.</p> <p><i>[Signature]</i> 10/15/2010 Signature Date</p> <p>Steve Sacks Printed Name</p> <p>ssacks@djssimmons.com E-mail Address</p> <p><b><sup>18</sup> SURVEYOR CERTIFICATION</b></p> <p>I hereby certify that the well location shown on this plat was plotted from field notes of actual surveys made by me or under my supervision, and that the same is true and correct to the best of my belief.</p> <p>See attached Original Date of Survey</p> <p>Signature and Seal of Professional Surveyor:</p> <p>Certificate Number</p>
--	---

RCVD DEC 8 '10  
OIL CONS. DIV.  
DIST. 3

NEW MEXICO OIL CONSERVATION COMMISSION  
WELL LOCATION AND ACREAGE DEDICATION PLAT

Form C-102  
Supersedes C-101  
Effective 1-1-82

All distances must be from the outer boundaries of the Section.

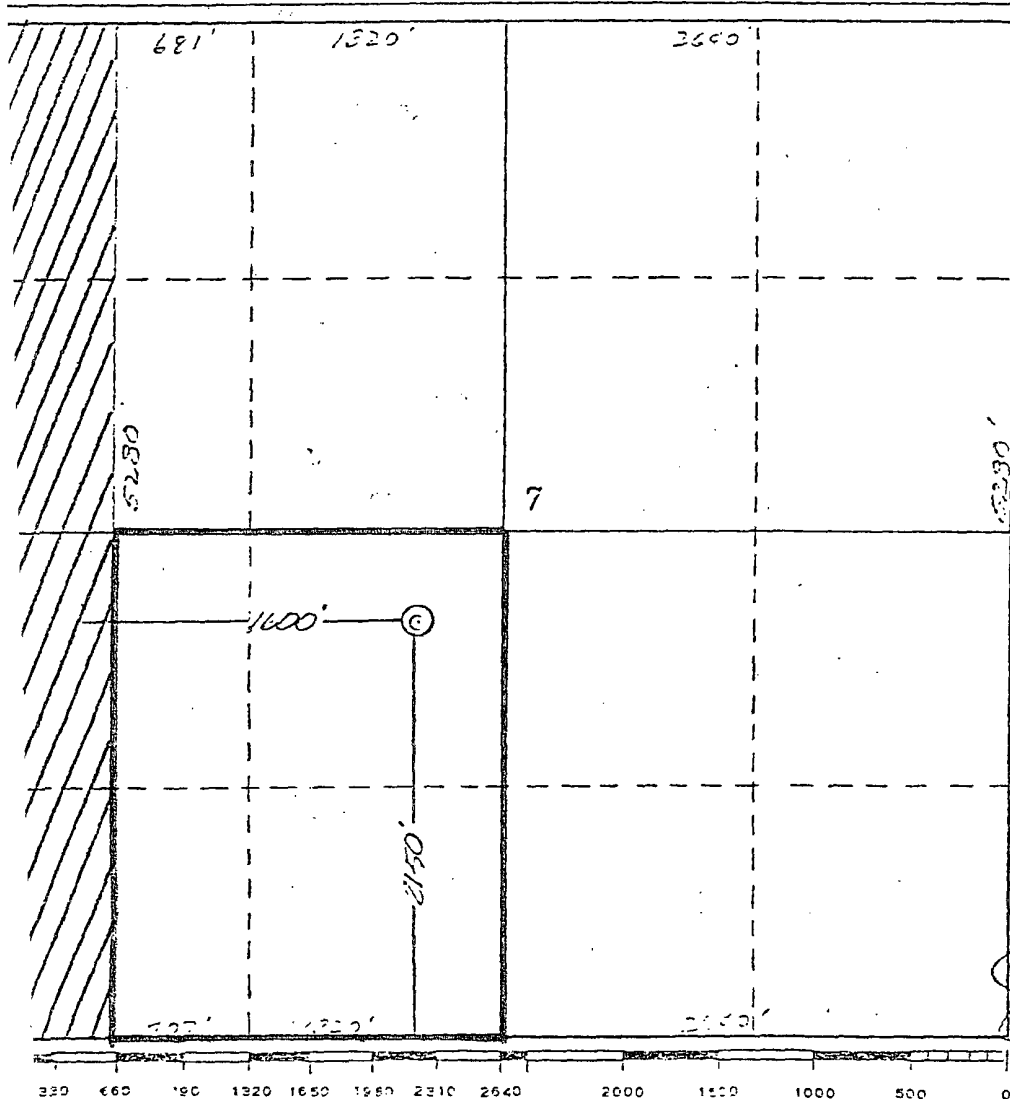
Operator <b>ARCO OIL AND GAS COMPANY **</b>		Lease <b>JICARILLA</b>		Well No. <b>108</b>	
Unit Letter <b>K</b>	Section <b>7</b>	Township <b>24 NORTH</b>	Range <b>4 WEST</b>	County <b>RIO ARriba</b>	
Actual Footage Location of Well:					
2150 feet from the		SOUTH line and		1600 feet from the WEST line	
Ground Level Elev. <b>6742</b>	Producing Formation <b>Chacon/Dakota</b>		Pool <b>W. Lindrith Gallup/Dakota</b>		Dedicated Acreage: <b>122.57 Acres</b>

1. Outline the acreage dedicated to the subject well by colored pencil or hatchure marks on the plat below.  
N/A
2. If more than one lease is dedicated to the well, outline each and identify the ownership thereof (both as to working interest and royalty).  
N/A
3. If more than one lease of different ownership is dedicated to the well, have the interests of all owners been consolidated by communitization, unitization, force-pooling, etc? N/A

☐ Yes ☐ No If answer is "yes," type of consolidation \_\_\_\_\_

If answer is "no," list the owners and tract descriptions which have actually been consolidated. (Use reverse side of this form if necessary.) \_\_\_\_\_

No allowable will be assigned to the well until all interests have been consolidated (by communitization, unitization, forced-pooling, or otherwise) or until a non-standard unit, eliminating such interests, has been approved by the Commission.

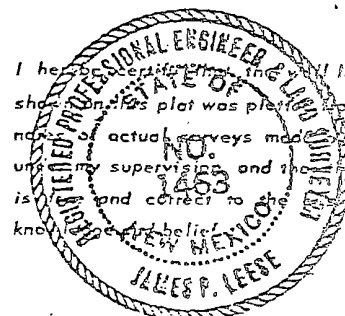


CERTIFICATION

I hereby certify that the information contained herein is true and complete to the best of my knowledge and belief.

Name  
**W. A. Walther, Jr.**  
Position  
**Operations Manager**  
Company  
**ARCO Oil and Gas Co.**  
**Division of Atlantic Richfield**  
Date  
**June 27, 1979**

I hereby certify that the well location shown on this plat was plotted from field notes of actual surveys made by me or under my supervision and that the same is true and correct to the best of my knowledge and belief.



Date Surveyed  
**28 May 1979**  
Registered Professional Engineer  
and Land Surveyor  
**James P. Leese**

Certificate No.  
**1463**

\*\*Division of Atlantic Richfield Company