

**UNITED STATES  
DEPARTMENT OF THE INTERIOR  
BUREAU OF LAND MANAGEMENT**

**RECEIVED****JAN 06 2011**

## Sundry Notices and Reports on Wells

Farmington Field Office  
Bureau of Land Management

1. Type of Well  
GAS

2. Name of Operator

**ConocoPhillips**

3. Address & Phone No. of Operator

PO Box 4289, Farmington, NM 87499 (505) 326-9700

4. Location of Well, Footage, Sec., T, R, M

Unit B (NWNE), 1120' FNL &amp; 1740' FEL, Section 28, T27N, R7W, NMPM

5. Lease Number  
SF-078640

6. If Indian, All. or  
Tribe Name

7. Unit Agreement Name  
San Juan 28-7 Unit

8. Well Name & Number  
San Juan 28-7 Unit 217

9. API Well No.  
30-039-20972

10. Field and Pool  
Chacra / Mesaverde

11. County and State  
Rio Arriba, NM

**12. CHECK APPROPRIATE BOX TO INDICATE NATURE OF NOTICE, REPORT, OTHER DATA**

## Type of Submission

## Type of Action

☐ Notice of Intent☐ Abandonment☐ Change of Plans☒ X

Other -

☐ Plugback MV &☒ Subsequent Report☐ Recompletion☐ New Construction☐ Current Wellbore☐ Final Abandonment☐ Plugging☐ Non-Routine Fracturing☐ Status☐ Casing Repair☐ Water Shut off☐ Altering Casing☐ Conversion to Injection**13. Describe Proposed or Completed Operations**

11/16/2010 MIRU APlus to TA MV. TA'd MV interval &amp; sqz'd casing leak found @ 222' per A Plug report attached.

Note: On 11/19 &amp; 11/24 asked &amp; received permission to squeeze &amp; re-squeeze leak @ 222'. Permission granted by BLM (Steve Mason) &amp; OCD (Charlie Perrin 11/19 &amp; Kelly Roberts 11/24)

Plans are to keep this well in TA status for future uphole potential. MIT chart is attached.

**RCVD JAN 14 '11****OIL CONS. DIV.****DIST. 3****14. I hereby certify that the foregoing is true and correct.**Signed Crystal Tafoya Crystal TafoyaTitle Staff Regulatory TechnicianDate 1/6/2011

(This space for Federal or State Office use)

APPROVED BY \_\_\_\_\_ Title \_\_\_\_\_

Date \_\_\_\_\_

CONDITION OF APPROVAL, if any:

Title 18 U.S.C. Section 1001, makes it a crime for any person knowingly and willfully to make any department or agency of the United States any false, fictitious or fraudulent statements or representations as to any matter within its jurisdiction.

**ACCEPTED FOR RECORD****JAN 10 2011****FARMINGTON FIELD OFFICE**

NMOCD T/A EXPIRES 12/6/2015 - FEDERAL EXPIRATION MAY VARY -  
CONTACT BLM FOR FEDERAL EXP. DATE. NMOCD

# **A-PLUS WELL SERVICE, INC.**

P.O. BOX 1979  
Farmington, New Mexico 87499  
505-325-2627 \* fax: 505-325-1211

ConocoPhillips  
**San Juan 28-7 Unit #217**

December 7, 2010  
Page 1 of 3

1120' FNL & 1740' FEL, Section 28, T-27-N, R-7-W  
Rio Arriba County, NM  
Lease Number: NMSF-078640  
API#30-039-20972

## **Bradenhead Repair Report**

Notified JAT – BLM and NMOCD on 11/15/10

### **Bradenhead Repair Summary:**

- 11/16/10 MOL and RU. LO/TO equipment on location. Check well pressures: casing 180 PSI, tubing 260 PSI and bradenhead 0 PSI. Layout relief line to pit. Blow well down. Change out bradenhead valve. SI well. SDFD.
- 11/17/10 Check well pressure: tubing 300 PSI, casing 175 PSI and bradenhead 20 PSI. Blow well down. PU on tubing and remove donut. Tally and TOH with 166 joints 2-3/8" tubing, total tally 5172'. Note: found hole in tubing at 5157'. Blow well down. Kill well with 20 bbls 2% KCl water. Round trip 3-3/4" gauge ring to 5150'. TIH and set 4.5" PlugWell CIBP at 5115'. SI well. SDFD.
- 11/18/10 Open up well and blow down 65 PSI. TIH with 4.5" KOT packer and set at 5100'. Pressure test tubing and CIBP to 1100 PSI for 10 minutes. Release packer. Load casing with 47 bbls 2% KCl water and circulate clean with additional 36 bbls of 2% KCl water. Attempt to pressure test casing, leak 1 bpm at 800 PSI. WOO. Located two holes in casing. WOO. TIH and isolate bottom hole; Chacra perms leaking. Attempt to isolate upper leak. PUH to 75'; no test. Unable to find top hole. TOH and LD packer. Note: packer looked rough. SI well. SDFD.
- 11/19/10 Open well, no pressure but casing on a vacuum. TIH with 4.5" KOT packer to 75'. Load casing with 2% KCl water and isolate top hole at 247'. TOH with tubing and packer. TIH with 4.5" KOT packer and RBP to 3074'. Set RBP at 3074' and packer at 2998'. Pressure test packer to 262'. Pressure test casing from 262' to 3074' to 630 PSI for 15 minutes. Establish rate into casing leak at 247' 1-1/4" bpm at 800 PSI with no blow or circulation out bradenhead. TOH with packer and WOO. TOH and retrieve RBP; LD. SI well. SDFD.
- 11/22/10 Open well, no pressure but casing on a vacuum. TIH with tubing to 4110'. Load casing with 28 bbls of 2% KCl water and circulate well clean with additional 37 bbls of KCl water. TOH with tubing. RU Basin wireline. Run CBL log from CIBP at 5115' to surface. Found ratty cement; no definite TOC. WOO. SI well. SDFD.
- 11/23/10 Open well, no pressure but casing on a vacuum. RU BlueJet wireline. Run casing inspection log from 3100' to surface. Casing looks good to 249'. Hole casing and weak casing at 222'. WOO. SI well. SDFD.

## A-PLUS WELL SERVICE, INC.

P.O. BOX 1979

Farmington, New Mexico 87499

505-325-2627 \* fax: 505-325-1211

ConocoPhillips

San Juan 28-7 Unit #217

December 7, 2010

Page 2 of 3

### Bradenhead Repair Summary Cont'd:

- 11/24/10 Open well, no pressure but casing on a vacuum. TIH with tubing and tag BP at 5115'. WOO. BLM/NMOCD approved plugging the well.  
**Plug #1** with CIBP at 5115', spot 48 sxs Class B cement (56.6 cf) inside casing above CIBP up to 4483' to isolate the Mesaverde interval.  
PUH to 4102'.  
**Plug #2** spot 50 sxs Class B cement (59 cf) inside casing from 4102' up to 3443' to cover the Chacra interval.  
PUH to 2800'. SI well and WOC. SDFD.
- 11/29/10 Open well; no pressure. TIH and tag cement at 3537'. RIH and set 4.5" PlugWell wireline CIBP at 3060'. Load casing with 8 bbls of water and establish rate into casing leak at 247', 1-1/4 bpm at 800 PSI.  
**Squeeze #1** mix and pump 50 sxs Class B cement (59 cf) and displace to 94' with 800 PSI. Hesitate squeeze up to 900 PSI and wait 15 minutes. Pump 2 strokes to 1000 PSI and wait 15 minutes; no pressure drop. TOC at 125'. SI well. SDFD.
- 11/30/10 Check well pressures: casing 320 PSI. Found wellhead frozen. Thaw out wellhead. Blow well down. TIH and tag cement at 122'. Drill out green cement to 221'. Circulate well clean. TOH with tubing and LD BHA. SI well. SDFD.
- 12/01/10 Open up well; no pressure. TIH with tubing and 3-7/8" tooth bit to 221'. Drill cement to 238' and fall through. Check for stringers to 315'. TOH with tubing and LD BHA. Pressure test casing to 650 PSI. Hook up pen recorder and chart. Pressure test casing to 660 PSI; bled down to 590 PSI in one hour. Blow well down; small amount of air. TIH with tubing to 1617'. Circulate well with 10 bbls of water. Attempt to pressure test casing on chart; no test 680 PSI to 600 PSI in 12 minutes on two attempts. PUH to 995'. SI well. SDFD.
- 12/02/10 Open up well; no pressure. TOH with tubing. Round trip 4.5" casing scraper to 377'. TIH with tubing and KOT to 319'. Isolate hole in casing at 247'. TOH with tubing and KOT. WOO. TIH with tubing to 258'.  
**Squeeze #2** mix and pump 10 sxs Class B cement (11.8 cf) from 258' to 126'. TOH with tubing. Hesitate squeeze .2 bbls to 650 PSI; bled down to 640 PSI after 30 minutes. Hesitate squeeze .1 bbls to 720 PSI; bled down to 795 PSI after 30 minutes. TOC at 144'. SI well. SDFD.

**A-PLUS WELL SERVICE, INC.**

P.O. BOX 1979

Farmington, New Mexico 87499

505-325-2627 \* fax: 505-325-1211

ConocoPhillips  
**San Juan 28-7 Unit #217**

December 7, 2010  
Page 3 of 3

**Bradenhead Repair Summary Cont'd:**

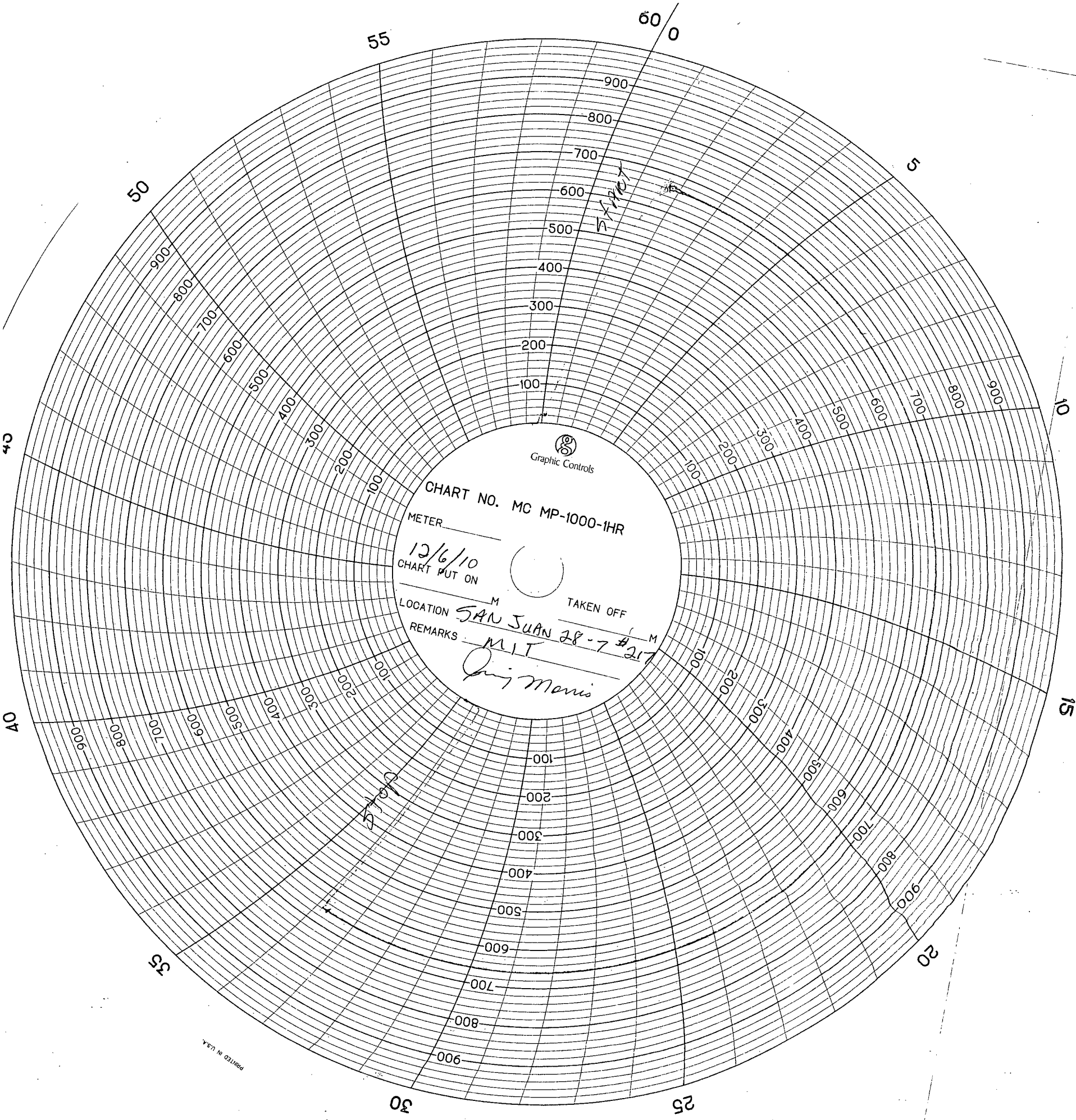
12/03/10 Standby WOC.

12/06/10 Open up well; no pressure. TIH with tubing, 3-7/8" tooth bit and drill collars; tag cement at 151'. Drill cement from 151' to 258'. Check for stringers to 316'. RU pen recorder. Pressure test and chart casing to 660 PSI for 30 minutes; no pressure drop. TIH with tubing and tag BP at 3060'. SI well. SDFD.

12/07/10 Open up well; no pressure. Roll the hole with 55 bbls 2% KCl water and corrosion inhibitor from 3060'. TOH and LD tubing and drill collars. ND BOP. NU wellhead. Top off casing with corrosion inhibitor. RD and MOL.

Jimmy Morris, MVCI, was on location.

Chris Adams, Protocom, was on location.



55

60  
0

5

10

15

20

25

30

50

45

40

35

PRINTED IN U.S.A.