

District I
1625 N French Dr., Hobbs, NM 88240
District II
1301 W Grand Avenue, Artesia, NM 88210
District III
1000 Rio Brazos Road, Aztec, NM 87410
District IV
1220 S. St. Francis Dr., Santa Fe, NM 87505

State of New Mexico
Energy Minerals and Natural Resources
Department
Oil Conservation Division
1220 South St. Francis Dr.
Santa Fe, NM 87505

Form C-144
June 16, 2008

For temporary pits, closed-loop systems, and below-grade tanks, submit to the appropriate NMOCD District Office
For permanent pits and exceptions submit to the Santa Fe Environmental Bureau office and provide a copy to the appropriate NMOCD District Office

6017
Pit, Closed-Loop System, Below-Grade Tank, or
Proposed Alternative Method Permit or Closure Plan Application

Type of action: ☐ Permit of a pit, closed-loop system, below-grade tank, or proposed alternative method
☒ Closure of a pit, closed-loop system, below-grade tank, or proposed alternative method

Instructions: Please submit one application (Form C-144) per individual pit, closed-loop system, below-grade tank or alternative request

Please be advised that approval of this request does not relieve the operator of liability should operations result in pollution of surface water, ground water or the environment. Nor does approval relieve the operator of its responsibility to comply with any other applicable governmental authority's rules, regulations or ordinances

| | |
|--|---------------------------|
| Operator: Dugan Production Corp. | OGRID #: 006515 |
| Address: 709 East Murray Drive, Farmington, New Mexico 87401 | RCVD JUL 17 '08 |
| Facility or well name: Flo Jo #92 | OIL CONS. DIV. DIST. 3 |
| API Number: 30-045-34516 | OCD Permit Number: |
| U/L or Qtr/Qtr B Section 1 Township 23N Range 11W County: San Juan | |
| Center of Proposed Design: Latitude 36.25934 North Longitude 107.95217 West NAD: <input type="checkbox"/> 1927 <input checked="" type="checkbox"/> 1983 | |
| Surface Owner: <input type="checkbox"/> Federal <input type="checkbox"/> State <input type="checkbox"/> Private <input checked="" type="checkbox"/> Tribal Trust or Indian Allotment | |

| | |
|---|---|
| <input checked="" type="checkbox"/> Pit: Subsection F or G of 19.15.17.11 NMAC Temporary: <input checked="" type="checkbox"/> Drilling <input type="checkbox"/> Workover <input type="checkbox"/> Permanent <input type="checkbox"/> Emergency <input type="checkbox"/> Cavitation <input checked="" type="checkbox"/> Lined <input type="checkbox"/> Unlined Liner type: Thickness 20 mil <input checked="" type="checkbox"/> LLDPE <input type="checkbox"/> HDPE <input type="checkbox"/> PVC <input type="checkbox"/> Other <input checked="" type="checkbox"/> String-Reinforced Seams: <input type="checkbox"/> Welded <input checked="" type="checkbox"/> Factory <input type="checkbox"/> Other Volume: 600 bbl Dimensions: L 76' x W 13' x D 8' | <input type="checkbox"/> Closed-loop System: Subsection H of 19.15.17.11 NMAC <input type="checkbox"/> Drying Pad <input type="checkbox"/> Tanks <input type="checkbox"/> Haul-off Bins <input type="checkbox"/> Other <input type="checkbox"/> Lined <input type="checkbox"/> Unlined Liner type: Thickness mil <input type="checkbox"/> LLDPE <input type="checkbox"/> HDPE <input type="checkbox"/> PVC <input type="checkbox"/> Other Seams: <input type="checkbox"/> Welded <input type="checkbox"/> Factory <input type="checkbox"/> Other Volume: bbl yd ³ Dimensions: Length x Width |
|---|---|

| | |
|---|---|
| <input type="checkbox"/> Below-grade tank: Subsection I of 19.15.17.11 NMAC Volume: bbl Type of fluid: Tank Construction material: <input type="checkbox"/> Secondary containment with leak detection <input type="checkbox"/> Visible sidewalls, liner, 6-inch lift and automatic overflow shut-off <input type="checkbox"/> Visible sidewalls and liner <input type="checkbox"/> Visible sidewalls only <input type="checkbox"/> Other Liner type: Thickness mil <input type="checkbox"/> HDPE <input type="checkbox"/> PVC <input type="checkbox"/> Other | <input type="checkbox"/> Fencing: Subsection D of 19.15.17.11 NMAC <input type="checkbox"/> Chain link, six feet in height, two strands of barbed wire at top <input type="checkbox"/> Four foot height, four strands of barbed wire evenly spaced between one and four feet <input type="checkbox"/> Netting: Subsection E of 19.15.17.11 NMAC <input type="checkbox"/> Screen <input type="checkbox"/> Netting <input type="checkbox"/> Other <input type="checkbox"/> Monthly inspections <input type="checkbox"/> Signs: Subsection C of 19.15.17.11 NMAC <input checked="" type="checkbox"/> 12'x24', 2' lettering, providing Operator's name, site location, and emergency telephone numbers <input type="checkbox"/> Signed in compliance with 19.15.3.103 NMAC |
|---|---|

| | |
|---|---|
| <input type="checkbox"/> Alternative Method: Submittal of an exception request is required. Exceptions must be submitted to the Santa Fe Environmental Bureau office for consideration of approval. | Administrative Approvals and Exceptions: Justifications and/or demonstrations of equivalency are required. Please refer to 19.15.17 NMAC for guidance. Please check a box if one or more of the following is requested, if not leave blank: <input checked="" type="checkbox"/> Administrative approval(s): Requests must be submitted to the appropriate division district or the Santa Fe Environmental Bureau office for consideration of approval. <input type="checkbox"/> Exception(s): Requests must be submitted to the Santa Fe Environmental Bureau office for consideration of approval. |
|---|---|



Siting Criteria (regarding permitting): 19.15.17.10 NMAC

Instructions: The applicant must demonstrate compliance for each siting criteria below in the application. Recommendations of acceptable source material are provided below. Requests regarding changes to certain siting criteria may require administrative approval from the appropriate district office or may be considered an exception which must be submitted to the Santa Fe Environmental Bureau office for consideration of approval. Applicant must attach justification for request. Please refer to 19.15.17.10 NMAC for guidance. Siting criteria does not apply to drying pads or above-grade tanks associated with a closed-loop system.

Ground water is less than 50 feet below the bottom of the temporary pit, permanent pit, or below-grade tank.

- NM Office of the State Engineer - iWATERS database search; USGS; Data obtained from nearby wells

☐ Yes ☒ No

Within 300 feet of a continuously flowing watercourse, or 200 feet of any other watercourse, lakebed, sinkhole, or playa lake (measured from the ordinary high-water mark).

- Topographic map; Visual inspection (certification) of the proposed site

☐ Yes ☒ No

Within 300 feet from a permanent residence, school, hospital, institution, or church in existence at the time of initial application (Applies to temporary, emergency, or cavitation pits and below-grade tanks)

- Visual inspection (certification) of the proposed site; Aerial photo; Satellite image

☐ Yes ☒ No

☐ NA

Within 1000 feet from a permanent residence, school, hospital, institution, or church in existence at the time of initial application. (Applies to permanent pits)

- Visual inspection (certification) of the proposed site, Aerial photo; Satellite image

☐ Yes ☒ No

☐ NA

Within 500 horizontal feet of a private, domestic fresh water well or spring that less than five households use for domestic or stock watering purposes, or within 1000 horizontal feet of any other fresh water well or spring, in existence at the time of initial application.

- NM Office of the State Engineer - iWATERS database search; Visual inspection (certification) of the proposed site

☐ Yes ☒ No

Within incorporated municipal boundaries or within a defined municipal fresh water well field covered under a municipal ordinance adopted pursuant to NMSA 1978, Section 3-27-3, as amended

- Written confirmation or verification from the municipality: Written approval obtained from the municipality

☐ Yes ☒ No

Within 500 feet of a wetland.

- US Fish and Wildlife Wetland Identification map; Topographic map; Visual inspection (certification) of the proposed site

☐ Yes ☒ No

Within the area overlying a subsurface mine.

- Written confirmation or verification or map from the NM EMNRD-Mining and Mineral Division

☐ Yes ☒ No

Within an unstable area.

- Engineering measures incorporated into the design; NM Bureau of Geology & Mineral Resources; USGS; NM Geological Society; Topographic map

☐ Yes ☒ No

Within a 100-year floodplain.

- FEMA map

☐ Yes ☒ No

Temporary Pits, Emergency Pits, and Below-grade Tanks Permit Application Attachment Checklist: Subsection B of 19.15.17.9 NMAC

Instructions: Each of the following items must be attached to the application. Please indicate, by a check mark in the box, that the documents are attached.

- ☐ Hydrogeologic Report (Below-grade Tanks) - based upon the requirements of Paragraph (4) of Subsection B of 19.15.17.15 NMAC
- ☒ Hydrogeologic Data (Temporary and Emergency Pits) - based upon the requirements of Paragraph (2) of Subsection B of 19.15.17.15 NMAC
- ☒ Siting Criteria Compliance Demonstrations - based upon the appropriate requirements of 19.15.17.10 NMAC
- ☒ Design Plan - based upon the appropriate requirements of 19.15.17.11 NMAC
- ☒ Operating and Maintenance Plan - based upon the appropriate requirements of 19.15.17.12 NMAC
- ☒ Closure Plan - based upon the appropriate requirements of Subsection C of 19.15.17.9 NMAC and 19.15.17.13 NMAC

☐ Previously Approved Design (attach copy of design) API Number: 30-045- or Permit Number:

Closed-loop Systems Permit Application Attachment Checklist: Subsection B of 19.15.17.9 NMAC

Instructions: Each of the following items must be attached to the application. Please indicate, by a check mark in the box, that the documents are attached.

- ☐ Geologic and Hydrogeologic Data (required for on-site closure) - based upon the requirements of Paragraph (3) of Subsection B of 19.15.17.15
- ☐ Siting Criteria Compliance Demonstrations (required for on-site closure) - based upon the appropriate requirements of 19.15.17.10 NMAC
- ☐ Design Plan - based upon the appropriate requirements of 19.15.17.11 NMAC
- ☐ Operating and Maintenance Plan - based upon the appropriate requirements of 19.15.17.12 NMAC
- ☐ Closure Plan - based upon the appropriate requirements of Subsection C of 19.15.17.9 NMAC and 19.15.17.13 NMAC

NMAC

☐ Previously Approved Design (attach copy of design) API Number:

Permanent Pits Permit Application Checklist: Subsection B of 19.15.17.9 NMAC

Instructions: Each of the following items must be attached to the application. Please indicate, by a check mark in the box, that the documents are attached.

- ☐ Hydrogeologic Report - based upon the requirements of Paragraph (1) of Subsection B of 19.15.17.15 NMAC
- ☐ Siting Criteria Compliance Demonstrations - based upon the appropriate requirements of 19.15.17.10 NMAC
- ☐ Climatological Factors Assessment
- ☐ Certified Engineering Design Plans - based upon the appropriate requirements of 19.15.17.11 NMAC
- ☐ Dike Protection and Structural Integrity Design - based upon the appropriate requirements of 19.15.17.11 NMAC
- ☐ Leak Detection Design - based upon the appropriate requirements of 19.15.17.11 NMAC
- ☐ Liner Specifications and Compatibility Assessment - based upon the appropriate requirements of 19.15.17.11 NMAC
- ☐ Quality Control/Quality Assurance Construction and Installation Plan
- ☐ Operating and Maintenance Plan - based upon the appropriate requirements of 19.15.17.12 NMAC
- ☐ Freeboard and Overtopping Prevention Plan - based upon the appropriate requirements of 19.15.17.11 NMAC
- ☐ Nuisance or Hazardous Odors, including H₂S, Prevention Plan
- ☐ Emergency Response Plan
- ☐ Oil Field Waste Stream Characterization
- ☐ Monitoring and Inspection Plan
- ☐ Erosion Control Plan
- ☐ Closure Plan - based upon the appropriate requirements of Subsection C of 19.15.17.9 NMAC and 19.15.17.13 NMAC

Proposed Closure: 19.15.17.13 NMAC

Type: ☒ Drilling ☐ Workover ☐ Emergency ☐ Cavitation ☐ Permanent Pit ☐ Below-grade Tank ☐ Closed-loop System ☐ Alternative

Proposed Closure Method: ☐ Waste Excavation and Removal

☒ On-site Closure Method (only for temporary pits and closed-loop systems)

☒ In-place Burial ☐ On-site Trench Burial

☐ Alternative Closure Method (Exceptions must be submitted to the Santa Fe Environmental Bureau for consideration)

Siting Criteria (regarding on-site closure methods only): 19.15.17.10 NMAC

Instructions: Each siting criteria requires a demonstration of compliance in the closure plan. Recommendations of acceptable source material are provided below. Requests regarding changes to certain siting criteria may require administrative approval from the appropriate district office or may be considered an exception which must be submitted to the Santa Fe Environmental Bureau office for consideration of approval. Justifications and/or demonstrations of equivalency are required. Please refer to 19.15.17.10 NMAC for guidance.

Ground water is less than 50 feet below the bottom of the buried waste.

- NM Office of the State Engineer - iWATERS database search; USGS; Data obtained from nearby wells

☐ Yes ☐ No
☒ NA

Ground water is between 50 and 100 feet below the bottom of the buried waste

- NM Office of the State Engineer - iWATERS database search; USGS; Data obtained from nearby wells

☐ Yes ☐ No
☒ NA

Ground water is more than 100 feet below the bottom of the buried waste.

- NM Office of the State Engineer - iWATERS database search; USGS; Data obtained from nearby wells

☒ Yes ☐ No
☐ NA

Within 300 feet of a continuously flowing watercourse, or 200 feet of any other watercourse, lakebed, sinkhole, or playa lake (measured from the ordinary high-water mark).

- Topographic map; Visual inspection (certification) of the proposed site

☐ Yes ☒ No

Within 300 feet from a permanent residence, school, hospital, institution, or church in existence at the time of initial application.

- Visual inspection (certification) of the proposed site, Aerial photo; Satellite image

☐ Yes ☒ No

Within 500 horizontal feet of a private, domestic fresh water well or spring that less than five households use for domestic or stock watering purposes, or within 1000 horizontal feet of any other fresh water well or spring, in existence at the time of initial application.

- NM Office of the State Engineer - iWATERS database; Visual inspection (certification) of the proposed site

☐ Yes ☒ No

Within incorporated municipal boundaries or within a defined municipal fresh water well field covered under a municipal ordinance adopted pursuant to NMSA 1978, Section 3-27-3, as amended.

- Written confirmation or verification from the municipality; Written approval obtained from the municipality

☐ Yes ☒ No

Within 500 feet of a wetland

- US Fish and Wildlife Wetland Identification map; Topographic map; Visual inspection (certification) of the proposed site

☐ Yes ☒ No

Within the area overlying a subsurface mine.

- Written confirmation or verification or map from the NM EMNRD-Mining and Mineral Division

☐ Yes ☒ No

Within an unstable area.

- Engineering measures incorporated into the design: NM Bureau of Geology & Mineral Resources; USGS; NM Geological Society; Topographic map

☐ Yes ☒ No

Within a 100-year floodplain.

- FEMA map

☐ Yes ☒ No

Waste Excavation and Removal Closure Plan Checklist: (19.15.17.13 NMAC) *Instructions: Each of the following items must be attached to the closure plan. Please indicate, by a check mark in the box, that the documents are attached.*

- ☐ Protocols and Procedures - based upon the appropriate requirements of 19.15.17.13 NMAC
- ☐ Confirmation Sampling Plan (if applicable) - based upon the appropriate requirements of Subsection F of 19.15.17.13 NMAC
- ☐ Disposal Facility Name and Permit Number (for liquids, drilling fluids and drill cuttings)
- ☐ Soil Backfill and Cover Design Specifications - based upon the appropriate requirements of Subsection H of 19.15.17.13 NMAC
- ☐ Re-vegetation Plan - based upon the appropriate requirements of Subsection I of 19.15.17.13 NMAC
- ☐ Site Reclamation Plan - based upon the appropriate requirements of Subsection G of 19.15.17.13 NMAC

Waste Removal Closure For Closed-loop Systems That Utilize Haul-off Bins Only: (19.15.17.13.D NMAC) *Instructions: Please identify the facility or facilities for the disposal of liquids, drilling fluids and drill cuttings.*

Disposal Facility Name: _____

Disposal Facility Permit Number: _____

On-Site Closure Plan Checklist: (19.15.17.13 NMAC) *Instructions: Each of the following items must be attached to the closure plan. Please indicate, by a check mark in the box, that the documents are attached.*

- ☒ Siting Criteria Compliance Demonstrations - based upon the appropriate requirements of 19.15.17.10 NMAC
- ☒ Proof of Surface Owner Notice - based upon the appropriate requirements of Subsection F of 19.15.17.13 NMAC
- ☐ Construction and Design of Burial Trench (if applicable) based upon the appropriate requirements of 19.15.17.11 NMAC
- ☒ Protocols and Procedures - based upon the appropriate requirements of 19.15.17.13 NMAC
- ☒ Confirmation Sampling Plan (if applicable) - based upon the appropriate requirements of Subsection F of 19.15.17.13 NMAC
- ☒ Waste Material Sampling Plan - based upon the appropriate requirements of Subsection F of 19.15.17.13 NMAC
- ☒ Disposal Facility Name and Permit Number (for liquids, drilling fluids and drill cuttings or in case on-site closure standards cannot be achieved)
- ☒ Soil Cover Design - based upon the appropriate requirements of Subsection H of 19.15.17.13 NMAC
- ☒ Re-vegetation Plan - based upon the appropriate requirements of Subsection I of 19.15.17.13 NMAC
- ☒ Site Reclamation Plan - based upon the appropriate requirements of Subsection G of 19.15.17.13 NMAC

Operator Application Certification:

I hereby certify that the information submitted with this application is true, accurate and complete to the best of my knowledge and belief

Name (Print): Kurt Fagrelus

Title: Vice President, Exploration

Signature: Kurt Fagrelus

Date: 7-16-08

e-mail address: kfagrelus@duganproduction.com

Telephone: 505-325-1821 (O), 505-320-8248 (C)

OCD Approval: ☒ Permit Application (including closure plan) ☒ Closure Plan (only)

OCD Representative Signature: Beth Dill

Approval Date: 1/03/11 9-24-08

Title: Enviro/spec

OCD Permit Number: _____

Closure Report (required within 60 days of closure completion): Subsection K of 19.15.17.13 NMAC

☒ Closure Completion Date: 11-14-2009

Closure Method:

- ☐ Waste Excavation and Removal ☒ On-Site Closure Method ☐ Alternative Closure Method
- ☐ If different from approved plan, please explain. _____

Closure Report Attachment Checklist: *Instructions: Each of the following items must be attached to the closure report. Please indicate, by a check mark in the box, that the documents are attached.*

- ☒ Proof of Closure Notice
- ☐ Proof of Deed Notice (if applicable)
- ☒ Plot Plan
- ☒ Confirmation Sampling Analytical Results
- ☒ Waste Material Sampling Analytical Results
- ☒ Disposal Facility Name and Permit Number
- ☒ Soil Backfilling and Cover Installation
- ☒ Re-vegetation Application Rates and Seeding Technique
- ☒ Site Reclamation (Photo Documentation)

On-site Closure Location: Latitude 36.25934° N Longitude 107.95217° W NAD: ☐ 1927 ☒ 1983

Operator Closure Certification:

I hereby certify that the information and attachments submitted with this closure report is true, accurate and complete to the best of my knowledge and belief. I also certify that the closure complies with all applicable closure requirements and conditions specified in the approved closure plan

Name (Print): Kurt Fagrelus

Title: Vice President, Exploration

Signature: Kurt Fagrelus

Date: 2-8-2010

e-mail address: kfagrelus@duganproduction.com

Telephone: 505-325-1821

**Dugan Production Corp.
Closure Report**

Lease Name: Flo Jo #92
API No.: 30-045-34516

In accordance with Rule 10.15.17.13 NMAC the following information describes the closure of the temporary pit referenced above. All proper documentation concerning closure activities is included with the C-144. The temporary pit for this location was an approved design under Rule 19.15.17. **The closure plan for the temporary pit was submitted on 7-16-2008 and approved on 9-29-2008.**

1. Comply with siting criteria for temporary pits established by the State of New Mexico, Energy Minerals and Natural Resources Department 19.15.17.10 NMAC.

See approved permit dated 9-29-2008

2. Provide the NMOCD district office at least 72-hours notice but no greater than 1-week prior to any closure operations. Notice will include operator name, well name and number, API number, and location (unit letter, section, township and range).

See email notification dated 11-11-2009.

3. Provide the surface owner notice of the operator's proposal of an on-site closure method. Proof of notice will be attached to the permit application. Also, proof of closure notice will be provided by certified mail to surface owner after closure. Proof of notice will be attached to final closure report.

Navajo Allotted surface, certified notification not applicable as per BLM/OCD MOU.

4. Remove all liquid from pit and reclaim, re-use or dispose of at an NMOCD approved facility. Upon completion of drilling operations, drilling mud will be vacuumed from pit and transported to the next reserve pit for re-use at another drilling location. After the remaining mud settles, the free water that shakes out and any free water left over from completion operations will be hauled to the Dugan Production operated Sanchez O'Brien #1 SWD located 1650 feet from the South line and 990 feet from the West line (Unit L) of Section 6, Township 24 North, Range 9 West NMPM, San Juan County, New Mexico. The disposal facility was permitted by the NMOCD with Administrative Order SWD-694.

Drilling rig was released (8-20-2009) and drilling mud was transferred to the Flo Jo #95 for re-use (8-21-2009). Remaining free water was transferred to the Sanchez O'Brien SWD #1 salt water disposal well.

5. Remove all fluids from temporary pit within 30-days and close within 6-months following release of drilling rig.

Free water was removed within 30-days and temporary pit was closed (11-14-2009).

6. Air dry pit contents and stabilize or solidify to a load bearing capacity sufficient to support the temporary pit's final cover.

Pit contents were allowed to dry prior to temporary pit closure.

7. Collect a five point, composite sample of the pit contents to demonstrate that Benzene, BTEX, the GRO and DRO combined fraction, TPH, and chlorides (depth to groundwater from bottom of pit is greater than 100-feet), do not exceed the standards as specified in 19.15.17.9.B or the background concentration, whichever is greater.

A five point composite sample was taken of remaining cuttings in temporary pit and was tested in accordance with Subsection B of 19.15.17.13 (B)(1)(b)(ii). Depth from bottom of pit to top of ground-water is greater than 100-feet. Sample results are attached.

| Components | Test Method | Limit (mg/kg) | *Results (mg/kg) |
|------------|---------------------------|---------------|------------------|
| Benzene | EPA SW-846 8021B or 8260B | 0.2 | <0.050 |
| BTEX | EPA SW-846 8021B or 8260B | 50 | <0.25 |
| TPH | EPA SW-846 418.1 | 2500 | <100 |
| GRO/DRO | EPA SW-846 8015M | 500 | <28.7 |
| Chlorides | EPA 300.1 | 1000 / 500 | 112 |

8. Other methods if the standards in 19.15.17.9.B can not be met will include: The pit contents may be mixed to a ratio not to exceed 3:1, un-contaminated soil or other material to pit contents. A second five point, composite sample of the contents after treatment or stabilization will be taken to demonstrate that the contents do not exceed the standards. If the second soil analyses do not satisfy the closure standards, the operator will close the temporary pit using the waste excavation and removal method.

Not applicable, testing standards of 19.15-17.9 were met.

9. Cut pit liner off at the mud line (solids level); remove liner and apron and transport to a NMOCD approved facility for disposal.

Pit liner was removed 11-14-2009 and disposed of at the Crouch Mesa Waste Management facility on 11-14-2009 (see attached invoice).

10. Stockpiled sub-surface soil will be used to backfill pit and re-contour well pad (to a final or intermediate cover that blends with the surrounding topography). A minimum of four-feet of compacted, non-waste containing, earthen material will be used as backfill.

Stockpiled sub-surface soil was used to backfill temporary pit and re-contour well pad. A minimum of four-feet of compacted, non-waste containing, earthen material was used to backfill pit.

11. Stockpiled surface soil will be used as a cover over the backfilled pit and disturbed areas of the well pad no longer needed for production operations. The soil cover will include either the background thickness of top soil or one foot of suitable material to establish vegetation at the site whichever is greater.

Stockpiled surface soil was used to cover backfilled temporary pit and disturbed areas of the well pad no longer needed for production operations. The soil cover included the greater of either the background thickness or one foot of suitable material necessary to establish vegetation. The location was re-contoured to approximate the original topography of the site and diversions were constructed to protect soil cover and minimize erosion.

12. The area will be re-seeded as per BLM guidelines. Re-seeding will be repeated until 70% of the native natural cover is achieved and maintained for two successive growing seasons. The first growing season after the pit is closed the disturbed area will be re-seeded. The seeding method will be to drill on contour whenever possible.

Re-seeding will be done according to BLM guidelines as specified by BLM/OCD memorandum of understanding.

13. The NMOCD will be notified once successful re-vegetation has been achieved.

Re-seeding will be done according to BLM guidelines as specified by BLM/OCD memorandum of understanding.

14. A steel marker will be set at the center of the on-site burial following onsite-pit closure (see application for administrative approval). The marker will be (24" X 24") and will have the operator name, lease name, well number, location (UL, Sec., Twp. and Rge.) and that it designates an "on-site burial location" lettering welded on the top side with a 4" threaded collar welded to the bottom side. The marker will be set at ground level and attached to a 4" diameter pipe that is cemented in a hole three feet deep. When the well is abandoned, a steel riser that is 4" in diameter, extending 4'

above the ground will be welded to the pipe anchored in cement below the surface. The riser will have lettering welded on side showing operator name, well number, location (UL, Sec., Twp., and Rge.) and that it designates an on-site burial location.

A flat steel marker (24" X 24") with the lettering "on-site burial location" was set at ground-level in the center of the burial site. The marker is welded to a 4" pipe that is cemented in a 3-foot deep hole and is shown in the attached photographs (administrative approval was received). When the well is P&A'd, the steel plate will be removed and a riser that is 4" in diameter, extending 4' above the ground will be welded to the pipe anchored in cement below the surface. The riser will have lettering welded on the side showing operator name, well number, location (UL, Sec., Twp., and Rge.) and that it designates an on-site burial location.

15. Closure Report will be submitted within 60-days of completion of temporary pit closure. Closure report will include the following:
- 1) Proof of Closure Notice.
 - 2) Proof of Deed Notice (if applicable).
 - 3) Plot Plan.
 - 4) Confirmation Sampling Analytical Results.
 - 5) Waste Material Sampling Analytical Results.
 - 6) Disposal Facility Name and Permit Number.
 - 7) Soil Backfilling and Cover Installation.
 - 8) Re-vegetation Application Rates and Seeding Technique.

All items listed above if applicable are attached and submitted on this date.

16. A deed notice identifying the exact location of the on-site burial will be filed with the County clerk in the county where the on-site burial occurs.

Navajo Allotted surface, deed notice identifying exact location of on-site burial is not applicable according to BLM/OCD MOU.

Kurt Fagrellius

From: Kurt Fagrellius
Sent: Friday, January 08, 2010 9:57 AM
To: 'Powell, Brandon, EMNRD'; 'Mark_Kelly@nm.blm.gov'
Subject: Temporary Drilling Pit Status

Dear Sirs, Dugan Production has closed the following temporary drilling pits: Flo Jo #92 (Nav. Allot. Surface)

Flo Jo #95 (Fed. Surface)
Road Runner #91, #92, and #93 (Fed. Surface)
Tom Wood Denn #1 and #2 (Nav. Allot. Surface)
Wood Denn #1 and #2 (Nav. Allot. Surface)
Martinez Begay Com #2 (Nav. Allot. Surface)
Gillespie Com #1 (Fed. Surface)

However, the onsite burial markers have not been installed yet due to the frozen soil conditions. Once the surface soils thaw, the burial markers will be installed.

The temporary drilling pit for the Oh Henry #2 (State Surface) has not been closed yet. All of the liquids had been hauled off, however, we are waiting for the remaining pit contents to thaw enough so that they can be sampled and analyzed properly. The pit will then be closed providing the analysis values of the pit are below the accepted threshold.

If you have any questions or require additional information, please contact me.

Sincerely, Kurt Fagrellius

1/21/2010

Kurt Fagrelus

From: Tyra Feil
Sent: Wednesday, November 11, 2009 9:59 AM
To: Mark_Kelly@nm.blm.gov; Powell, Brandon, EMNRD
Cc: Kurt Fagrelus
Subject: Temporary Drilling Pit Closures

11/11/09

Mark & Brandon,

On Saturday, November 14, 2009, Dugan Production will be closing the temporary drilling pits on the following wells:

Martinez Begay Com #2
Flo Jo #92
Flo Jo #95

If you have any questions, or require additional information, please contact Kurt by e-mail at kfagrelus@duganproduction.com or at 505-325-1821.

Thank you,

Tyra Feil
Dugan Production Corp.
505-325-1821
tyrafeil@duganproduction.com

1/21/2010

Dugan Production Corp.
709 East Murray Drive
Farmington, NM 87401

Well Name: *Flo Jo #92*

Location:

Drilling Operator: *Wayne Smith Drilling*

Rig #:

Spud Date: *8-16-09*

Rate:

Rig Moved Off:

Rate to Remove Liquids by:
(30-days from rig release)

Rate to Close Pit by:
(180-days from rig release)

Log Book of Daily inspections during Drilling / workover operations, weekly after rig is moved off.

| Date: | Signature | Freeboard (> 2-ft.) Yes / No | Tears or Holes Yes / No | Oil Yes / No | Trash Yes / No | Remarks |
|----------------|-----------|---------------------------------|----------------------------|-----------------|-------------------|---|
| <i>8-16-09</i> | | <i>Fr. RR 92</i> | | | | |
| <i>8-16-09</i> | <i>DB</i> | <i>2 Loads Transfer 3 1/2</i> | | <i>Fresh</i> | | |
| <i>8-17-09</i> | <i>DB</i> | <i>3 FT</i> | <i>NO</i> | <i>NO</i> | <i>NO</i> | |
| <i>8-18-09</i> | <i>DB</i> | <i>3 FT</i> | <i>NO</i> | <i>NO</i> | <i>NO</i> | |
| <i>8-19-09</i> | <i>DB</i> | <i>3 FT</i> | <i>NO</i> | <i>NO</i> | <i>NO</i> | <i>80 Barrels Fresh</i> |
| <i>8-20-09</i> | <i>DB</i> | <i>2 FT</i> | <i>NO</i> | <i>NO</i> | <i>NO</i> | <i>80 Barrels Fresh</i> |
| <i>8-21-09</i> | <i>DB</i> | <i>3 FT</i> | <i>NO</i> | <i>NO</i> | <i>NO</i> | <i>Rig Released</i> <i>Trent mud Flo Jo 95</i> |



ARDINAL LABORATORIES

PHONE (575) 393-2326 • 101 E. MARLAND • HOBBS, NM 88240

October 6, 2009

Kurt Fagrelus
Dugan Production Corporation
709 East Murray Drive
Farmington, NM 87401

Re: Pit Closure Samples

Enclosed are the results of analyses for sample number H18389, received by the laboratory on 10/02/09 at 11:20 am.

Cardinal Laboratories is accredited through Texas NELAP for:

| | |
|--------------------|--|
| Method SW-846 8021 | Benzene, Toluene, Ethyl Benzene, and Total Xylenes |
| Method SW-846 8260 | Benzene, Toluene, Ethyl Benzene, and Total Xylenes |
| Method TX 1005 | Total Petroleum Hydrocarbons |

Certificate number T104704398-08-TX. Accreditation applies to solid and chemical materials and non-potable water matrices.

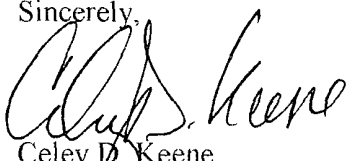
Cardinal Laboratories is accredited through the State of Colorado Department of Public Health and Environment for:

| | |
|------------------|------------------------------|
| Method EPA 552.2 | Haloacetic Acids (HAA-5) |
| Method EPA 524.2 | Total Trihalomethanes (TTHM) |
| Method EPA 524.2 | Regulated VOCs (V2, V3) |

Accreditation applies to public drinking water matrices.

Total Number of Pages of Report: 4 (includes Chain of Custody)

Sincerely,


Celey D. Keene
Laboratory Director

This report conforms with NELAP requirements.

RECEIVED
OCT 13 2009



PHONE (575) 393-2326 • 101 E. MARLAND • HOBBS, NM 88240

ANALYTICAL RESULTS FOR
DUGAN PRODUCTION CORP.
ATTN: KURT FAGRELIUS
709 E. MURRAY DRIVE
FARMINGTON, NM 87401
FAX TO: (505) 327-4613

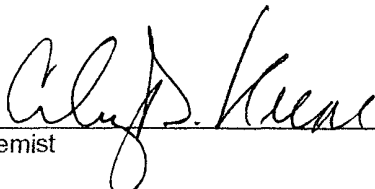
Receiving Date: 10/02/09
Reporting Date: 10/06/09
Project Number: NOT GIVEN
Project Name: NOT GIVEN
Project Location: NOT GIVEN

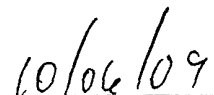
Sampling Date: 10/01/09
Sample Type: SOIL
Sample Condition: COOL & INTACT @ 6°C
Sample Received By: ML
Analyzed By: ZL

| LAB NO. | SAMPLE ID | BENZENE (mg/kg) | TOLUENE (mg/kg) | ETHYL BENZENE (mg/kg) | TOTAL XYLENES (mg/kg) |
|-----------------------------|-----------------------|--------------------|--------------------|-----------------------------|-----------------------------|
| ANALYSIS DATE: | | 10/05/09 | 10/05/09 | 10/05/09 | 10/05/09 |
| H18389-1 | ROAD RUNNER #91 | <0.050 | 0.203 | 0.200 | 0.780 |
| H18389-2 | ROAD RUNNER #92 | <0.050 | <0.050 | <0.050 | <0.300 |
| H18389-3 | ROAD RUNNER #93 | <0.050 | <0.050 | <0.050 | <0.300 |
| H18389-4 | FLO JO #92 | <0.050 | 0.108 | 0.092 | 0.358 |
| H18389-5 | FLO JO #95 | <0.050 | 0.086 | 0.074 | <0.300 |
| H18389-6 | MARTINEZ BEGOG COM #2 | <0.050 | <0.050 | <0.050 | <0.300 |
| Quality Control | | 0.060 | 0.052 | 0.048 | 0.163 |
| True Value QC | | 0.050 | 0.050 | 0.050 | 0.150 |
| % Recovery | | 120 | 104 | 96.0 | 109 |
| Relative Percent Difference | | <1.0 | <1.0 | <1.0 | <1.0 |

METHODS: BTEX - SW-846 8021B.

TEXAS NELAP ACCREDITATION T104704398-08-TX FOR BENZENE, TOLUENE, ETHYL BENZENE,
AND TOTAL XYLENES. Reported on wet weight.


Chemist


Date

H18389 BTEX DUGAN

PLEASE NOTE: **Liability and Damages.** Cardinal's liability and client's exclusive remedy for any claim arising, whether based in contract or tort, shall be limited to the amount paid by client for analyses. All claims, including those for negligence and any other cause whatsoever shall be deemed waived unless made in writing and received by Cardinal within thirty (30) days after completion of the applicable service. In no event shall Cardinal be liable for incidental or consequential damages, including, without limitation, business interruptions, loss of use, or loss of profits incurred by client, its subsidiaries, affiliates or successors arising out of or related to the performance of services hereunder by Cardinal, regardless of whether such claim is based upon any of the above-stated reasons or otherwise. Results relate only to the samples identified above. This report shall not be reproduced except in full with written approval of Cardinal Laboratories.



PHONE (575) 393-2326 • 101 E. MARLAND • HOBBS, NM 88240

ANALYTICAL RESULTS FOR
DUGAN PRODUCTION CORP.
ATTN: KURT FAGRELIUS
709 E. MURRAY DRIVE
FARMINGTON, NM 87401
FAX TO: (505) 327-4613

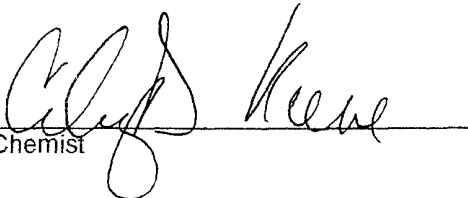
Receiving Date: 10/02/09
Reporting Date: 10/05/09
Project Number: NOT GIVEN
Project Name: NOT GIVEN
Project Location: NOT GIVEN

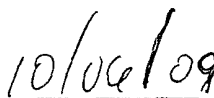
Sampling Date: 10/01/09
Sample Type: SOIL
Sample Condition: COOL & INTACT @ 6°C
Sample Received By: ML
Analyzed By: AB/HM

| LAB NUMBER | SAMPLE ID | GRO | DRO | 418.1 TOTAL | CI* |
|------------|-----------|---|---|----------------|-----|
| | | (C ₆ -C ₁₀) (mg/kg) | (>C ₁₀ -C ₂₈) (mg/kg) | TPH (mg/kg) | |

| ANALYSIS DATE | 10/03/09 | 10/03/09 | 10/05/09 | 10/01/09 |
|--------------------------------|----------|----------|----------|----------|
| H18389-1 ROAD RUNNER #91 | <10.0 | <10.0 | <100 | 112 |
| H18389-2 ROAD RUNNER #92 | <10.0 | 47.4 | 239 | 224 |
| H18389-3 ROAD RUNNER #93 | <10.0 | 16.2 | <100 | 208 |
| H18389-4 FLO JO #92 | <10.0 | 18.7 | <100 | 112 |
| H18389-5 FLO JO #95 | <10.0 | 20.4 | <100 | 208 |
| H18389-6 MARTINEZ BEGOG COM #2 | <10.0 | <10.0 | <100 | 128 |
| Quality Control | 567 | 595 | 342 | 500 |
| True Value QC | 500 | 500 | 300 | 500 |
| % Recovery | 113 | 119 | 114 | 100 |
| Relative Percent Difference | 1.8 | 0.1 | 2.1 | 2.0 |

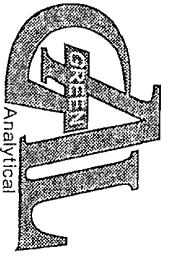
METHODS: TPH GRO & DRO: EPA SW-846 8015 M; EPA 418.1; CI: Std. Methods 4500-CI-B
*Analyses performed on 1:4 w:v aqueous extracts. Reported on wet weight.
Not accredited for GRO/DRO, Chloride, and TPH 418.1.


Chemist


Date

H18389 TPH2CL DUGAN

PLEASE NOTE: **Liability and Damages.** Cardinal's liability and client's exclusive remedy for any claim arising, whether based in contract or tort, shall be limited to the amount paid by client for analyses. All claims, including those for negligence and any other cause whatsoever shall be deemed waived unless made in writing and received by Cardinal within thirty (30) days after completion of the applicable service. In no event shall Cardinal be liable for incidental or consequential damages, including, without limitation, business interruptions, loss of use, or loss of profits incurred by client, its subsidiaries, affiliates or successors arising out of or related to the performance of services hereunder by Cardinal, regardless of whether such claim is based upon any of the above-stated reasons or otherwise. Results relate only to the samples identified above. This report shall not be reproduced except in full with written approval of Cardinal Laboratories.



CHAIN OF CUSTODY RECORD

Page ____ of ____

Client: Deegan Production Corp
Contact: Mark Tagorellis
Address: 708 E. Murray Drive
Farmington, NM 87401
Phone Number: 505-325-1621
FAX Number: 327-4613

NOTES:
1) Ensure proper container packaging.
2) Ship samples promptly following collection.
3) Designate Sample Reject Disposition.
PO# _____
Project Name: _____

Table 1. - Matrix Type
1 = Surface Water, 2 = Ground Water
3 = Soil/Sediment, 4 = Rinse, 5 = Oil
6 = Waste, 7 = Other (Specify) _____

FOR GAL USE ONLY
GAL JOB # _____

Samplers Signature: _____

Lab Name: Green Analytical Laboratories (970) 247-4220 FAX (970) 247-4227
Address: 75 Suttle Street, Durango, CO 81303

Tagorellis@deeganproduction.com

| Lab Name: Green Analytical Laboratories (970) 247-4220 FAX (970) 247-4227 | | | | | | | | | | Analyses Required | | | | | | | | |
|---|------------|---------------|-----------------------|-----------------------------|-------------------|-----------------------|------------------------|------|-----|-------------------|--|--|--|--|--|--|--|----------|
| Address: 75 Suttle Street, Durango, CO 81303 | | | | | | | | | | | | | | | | | | |
| Sample ID | Collection | | Collected by: (Init.) | Miscellaneous | | | Preservative(s) | | | | | | | | | | | |
| | Date | Time | | Matrix Type From Table 1 | No. of Containers | Sample Filtered ? Y/N | Unpreserved (Ice Only) | HNO3 | HCL | H2SO4 | | | | | | | | |
| 1. Road Runoff #91 | 10/1/09 | 10:30 AM | KE | 3 | | | | | | | | | | | | | | H18389-1 |
| 2. Road Runoff #92 | " | 11:30 PM | " | 3 | | | | | | | | | | | | | | -2 |
| 3. Road Runoff #93 | " | 11:00 AM | " | 3 | | | | | | | | | | | | | | -3 |
| 4. F16 Jo #92 | " | 12:30 PM | " | 3 | | | | | | | | | | | | | | -4 |
| 5. F16 Jo #95 | " | 12:00 PM | " | 3 | | | | | | | | | | | | | | -5 |
| 6. F16 Jo #94 | " | 1:00 PM | " | 3 | | | | | | | | | | | | | | -6 |
| 7. | Can #2 | | | | | | | | | | | | | | | | | |
| 8. | | | | | | | | | | | | | | | | | | |
| 9. | | | | | | | | | | | | | | | | | | |
| 10. | | | | | | | | | | | | | | | | | | |
| Relinquished by: Mark Tagorellis | | Date: 10/1/09 | Time: 2:20 PM | Received by: Anthony Chavez | | Date: 10/1/09 | Time: 10:20 AM | | | | | | | | | | | |
| Relinquished by: | | Date: | Time: | Received by: | | Date: | Time: | | | | | | | | | | | |

* Sample Reject: | Return | Dispose | Store (30 Days)

100 #24
+ 100 #24

[illegible]

1. The first step is to identify the problem.
 2. The second step is to analyze the problem.
 3. The third step is to develop a solution.
 4. The fourth step is to implement the solution.
 5. The fifth step is to evaluate the solution.

1991

| Year | 1990 | 1991 | 1992 | 1993 | 1994 |
|---------------------------------------|-------|-------|-------|-------|-------|
| 1. Total number of cases | 1,100 | 1,200 | 1,300 | 1,400 | 1,500 |
| 2. Number of cases by age group | | | | | |
| a. 0-14 | 100 | 110 | 120 | 130 | 140 |
| b. 15-24 | 200 | 210 | 220 | 230 | 240 |
| c. 25-34 | 300 | 310 | 320 | 330 | 340 |
| d. 35-44 | 400 | 410 | 420 | 430 | 440 |
| e. 45-54 | 500 | 510 | 520 | 530 | 540 |
| f. 55-64 | 600 | 610 | 620 | 630 | 640 |
| g. 65-74 | 700 | 710 | 720 | 730 | 740 |
| h. 75+ | 800 | 810 | 820 | 830 | 840 |
| 3. Number of cases by sex | | | | | |
| a. Male | 550 | 560 | 570 | 580 | 590 |
| b. Female | 550 | 640 | 730 | 820 | 910 |
| 4. Number of cases by race | | | | | |
| a. White | 600 | 610 | 620 | 630 | 640 |
| b. Black | 200 | 210 | 220 | 230 | 240 |
| c. Hispanic | 100 | 110 | 120 | 130 | 140 |
| d. Asian/Pacific Islander | 50 | 55 | 60 | 65 | 70 |
| e. American Indian/Alaska Native | 10 | 11 | 12 | 13 | 14 |
| 5. Number of cases by education level | | | | | |
| a. Less than high school | 100 | 110 | 120 | 130 | 140 |
| b. High school graduate | 200 | 210 | 220 | 230 | 240 |
| c. Some college | 300 | 310 | 320 | 330 | 340 |
| d. Bachelor's degree | 400 | 410 | 420 | 430 | 440 |
| e. Graduate degree | 500 | 510 | 520 | 530 | 540 |

[illegible]

Kurt Feynman
Dugan & Mead
Dugan &
Flo 513 #92, 95
1 martinez Dugan & Mead #2

| | | | | | | | | | | |
|---|---|--|------------------------|---------------------------------------|----------------|---|---|-------------------------------|----------|---------------|
| Submit To Appropriate District Office Two Copies District I 1625 N. French Dr., Hobbs, NM 88240 District II 1301 W. Grand Avenue, Artesia, NM 88210 District III 1000 Rio Brazos Rd., Aztec, NM 87410 District IV 1220 S. St. Francis Dr., Santa Fe, NM 87505 | State of New Mexico Energy, Minerals and Natural Resources Oil Conservation Division 1220 South St. Francis Dr. Santa Fe, NM 87505 | Form C-105 July 17, 2008 | | | | | | | | |
| | | 1. WELL API NO. 30-045-34516 | | | | | | | | |
| | | 2. Type of Lease <input type="checkbox"/> STATE <input type="checkbox"/> FEE <input checked="" type="checkbox"/> FED/INDIAN | | | | | | | | |
| | | 3. State Oil & Gas Lease No. | | | | | | | | |
| WELL COMPLETION OR RECOMPLETION REPORT AND LOG | | | | | | | | | | |
| 4. Reason for filing: <input type="checkbox"/> COMPLETION REPORT (Fill in boxes #1 through #31 for State and Fee wells only) <input checked="" type="checkbox"/> C-144 CLOSURE ATTACHMENT (Fill in boxes #1 through #9, #15 Date Rig Released and #32 and/or #33; attach this and the plat to the C-144 closure report in accordance with 19.15.17.13.K NMAC) | | 5. Lease Name or Unit Agreement Name Flo Jo | | | | | | | | |
| | | 6. Well Number: #92 | | | | | | | | |
| 7. Type of Completion: <input checked="" type="checkbox"/> NEW WELL <input type="checkbox"/> WORKOVER <input type="checkbox"/> DEEPENING <input type="checkbox"/> PLUGBACK <input type="checkbox"/> DIFFERENT RESERVOIR <input type="checkbox"/> OTHER | | | | | | | | | | |
| 8. Name of Operator Dugan Production Corp. | | 9. OGRID 006515 | | | | | | | | |
| 10. Address of Operator P.O. Box 420, Farmington, NM 87499-0420 | | 11. Pool name or Wildcat Basin Fruitland Coal | | | | | | | | |
| 12. Location | Unit Ltr | Section | Township | Range | Lot | Feet from the | N/S Line | Feet from the | E/W Line | County |
| Surface: | B | 1 | 23N | 11W | | | | | | |
| BH: | | | | | | | | | | |
| 13. Date Spudded | 14. Date T.D. Reached | 15. Date Rig Released 8-21-2009 | | 16. Date Completed (Ready to Produce) | | | 17. Elevations (DF and RKB, RT, GR, etc.) | | | |
| 18. Total Measured Depth of Well | | 19. Plug Back Measured Depth | | 20. Was Directional Survey Made? | | | 21. Type Electric and Other Logs Run | | | |
| 22. Producing Interval(s), of this completion - Top, Bottom, Name | | | | | | | | | | |
| 23. CASING RECORD (Report all strings set in well) | | | | | | | | | | |
| CASING SIZE | | WEIGHT LB/FT. | | DEPTH SET | | HOLE SIZE | | CEMENTING RECORD | | AMOUNT PULLED |
| | | | | | | | | | | |
| | | | | | | | | | | |
| | | | | | | | | | | |
| | | | | | | | | | | |
| | | | | | | | | | | |
| 24. LINER RECORD | | | | | | 25. TUBING RECORD | | | | |
| SIZE | TOP | BOTTOM | SACKS CEMENT | SCREEN | | SIZE | DEPTH SET | PACKER SET | | |
| | | | | | | | | | | |
| | | | | | | | | | | |
| | | | | | | | | | | |
| | | | | | | | | | | |
| 26. Perforation record (interval, size, and number) | | | | | | 27. ACID, SHOT, FRACTURE, CEMENT, SQUEEZE, ETC. | | | | |
| | | | | | | DEPTH INTERVAL | | AMOUNT AND KIND MATERIAL USED | | |
| | | | | | | | | | | |
| | | | | | | | | | | |
| | | | | | | | | | | |
| 28. PRODUCTION | | | | | | | | | | |
| Date First Production | | Production Method (Flowing, gas lift, pumping - Size and type pump) | | | | | Well Status (Prod. or Shut-in) | | | |
| Date of Test | Hours Tested | Choke Size | Prod'n For Test Period | Oil - Bbl | Gas - MCF | Water - Bbl. | Gas - Oil Ratio | | | |
| Flow Tubing Press. | Casing Pressure | Calculated 24-Hour Rate | Oil - Bbl. | Gas - MCF | Water - Bbl. | Oil Gravity - API - (Corr.) | | | | |
| 29. Disposition of Gas (Sold, used for fuel, vented, etc.) | | | | | | | 30. Test Witnessed By | | | |
| 31. List Attachments | | | | | | | | | | |
| 32. If a temporary pit was used at the well, attach a plat with the location of the temporary pit. | | | | | | | | | | |
| 33. If an on-site burial was used at the well, report the exact location of the on-site burial: | | | | | | | | | | |
| Latitude <u>36.25934° N</u> Longitude <u>107.95217° W</u> NAD 1927 <u>(983)</u> | | | | | | | | | | |
| I hereby certify that the information shown on both sides of this form is true and complete to the best of my knowledge and belief | | | | | | | | | | |
| Signature <u>Kurt Fagrelus</u> | | | Printed Name | | Title | | | Date | | |
| E-mail Address <u>kfagrelus@duganproduction.com</u> | | | | | VP-Exploration | | | <u>2-8-2010</u> | | |

District I
1625 N. French Dr., Hobbs, NM 88240

District II
1301 W. Grand Avenue, Artesia, NM 88210

District III
1000 Rio Brazos Rd., Aztec, NM 87410

District IV
1220 S. St. Francis Dr., Santa Fe, NM 87505

State of New Mexico
Energy, Minerals & Natural Resources Department

OIL CONSERVATION DIVISION
1220 South St. Francis Dr.
Santa Fe, NM 87505

Form C-102
Revised October 12, 2005
Instructions on back
Submit to Appropriate District Office
State Lease - 4 Copies
Fee Lease - 3 Copies

☐ AMENDED REPORT

WELL LOCATION AND ACREAGE DEDICATION PLAT

| | | | |
|----------------------|--|---------------------|------------------------------------|
| *API Number | | *Pool Code 71629 | *Pool Name BASIN FRUITLAND COAL |
| *Property Code | *Property Name FLO JO | | *Well Number 92 |
| *OGRID No. 006515 | *Operator Name DUGAN PRODUCTION CORPORATION | | *Elevation 6566' |

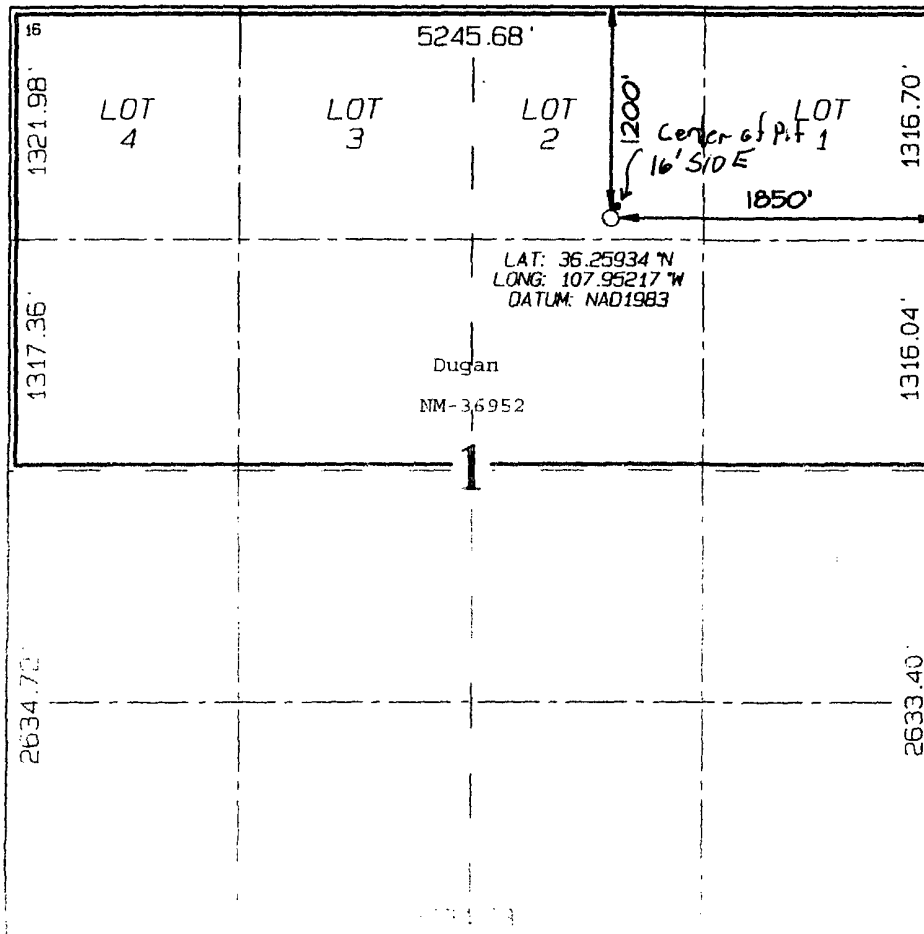
¹⁰ Surface Location

| UL or lot no. | Section | Township | Range | Lot 10n | Feet from the | North/South line | Feet from the | East/West line | County |
|---------------|---------|----------|-------|---------|---------------|------------------|---------------|----------------|----------|
| B | 1 | 23N | 11W | | 1200 | NORTH | 1850 | EAST | SAN JUAN |

¹¹ Bottom Hole Location If Different From Surface

| UL or lot no. | Section | Township | Range | Lot 10n | Feet from the | North/South line | Feet from the | East/West line | County |
|---|---------|----------|-------|---------|-------------------------------|----------------------------------|-------------------------|----------------|--------|
| | | | | | | | | | |
| ¹² Dedicated Acres 320.28 Acres - (N/2) | | | | | ¹³ Joint or Infill | ¹⁴ Consolidation Code | ¹⁵ Order No. | | |

NO ALLOWABLE WILL BE ASSIGNED TO THIS COMPLETION UNTIL ALL INTERESTS HAVE BEEN CONSOLIDATED
OR A NON-STANDARD UNIT HAS BEEN APPROVED BY THE DIVISION



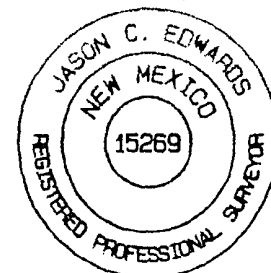
¹⁷ OPERATOR CERTIFICATION
I hereby certify that the information contained herein is true and complete to the best of my knowledge and belief, and that this organization either owns a working interest or unleased mineral interest in the land including the proposed bottom-hole location or has a right to drill this well at this location pursuant to a contract with an owner of such a mineral or working interest, or to a voluntary pooling agreement or a compulsory pooling order heretofore entered by the division.

Kurt Fagrelus 11/26/2007
Signature Date
Kurt Fagrelus
Printed Name

¹⁸ SURVEYOR CERTIFICATION
I hereby certify that the well location shown on this plat was plotted from field notes of actual surveys made by me or under my supervision, and that the same is true and correct to the best of my belief.

Survey Date: OCTOBER 23, 2007

Signature and Seal of Professional Surveyor



JASON C. EDWARDS

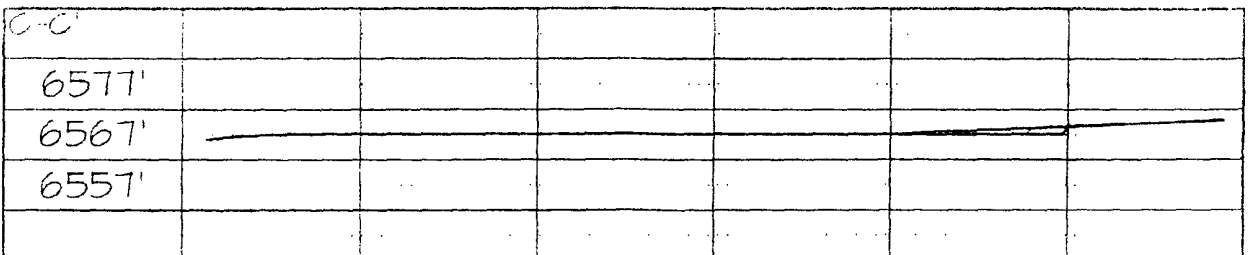
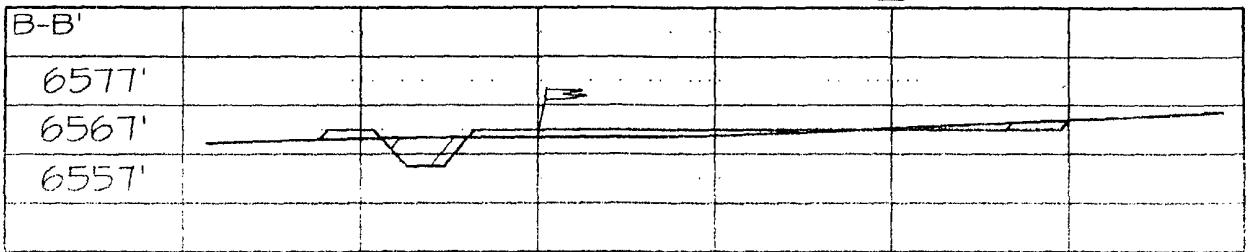
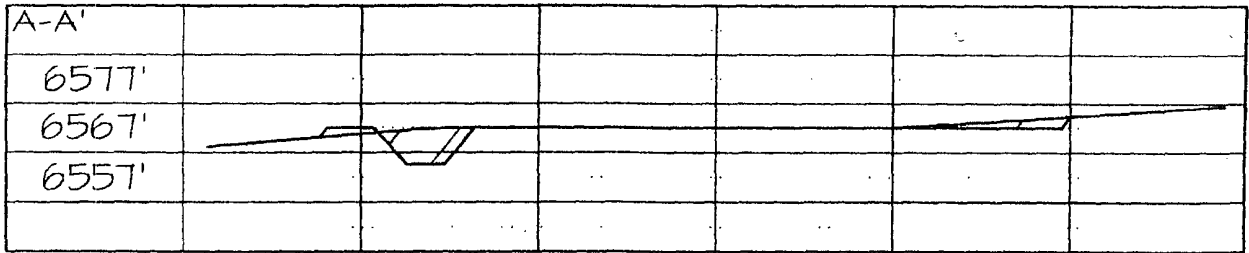
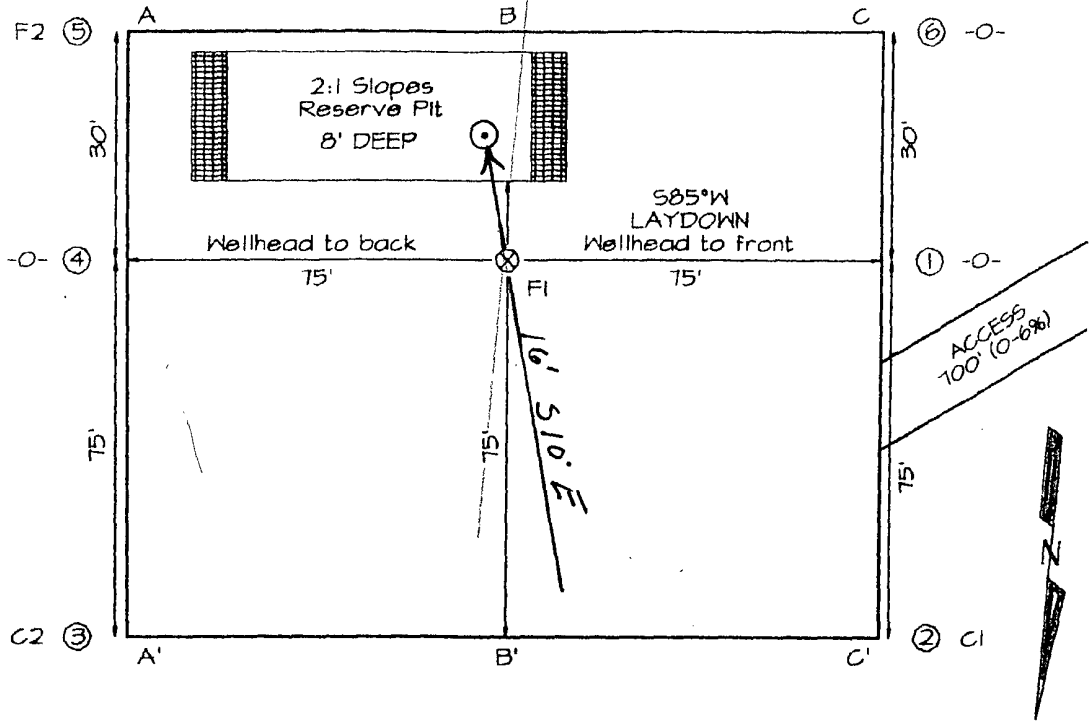
DUGAN PRODUCTION CORPORATION FLO JO #92
1200' FNL & 1850' FEL, SECTION 1, T23N, R11W, NMPM
SAN JUAN COUNTY, NEW MEXICO ELEVATION: 6566'

PLAT 3.

PLAT NOTE:

SURFACE OWNER
 Navajo Allotted
 Tribal Land

LATITUDE: 36.25934° N
LONGITUDE: 107.95217° W
 DATUM: NAD1983



Note: Contractor should call One-Call for location of any marked or unmarked buried utilities in the area of well pad and access road in that two (2) working days prior to construction.

