

For temporary pits, closed-loop systems, and below-grade tanks, submit to the appropriate NMOCD District Office.

For permanent pits and exceptions submit to the Santa Fe Environmental Bureau office and provide a copy to the appropriate NMOCD District Office.

**Pit, Closed-Loop System, Below-Grade Tank, or  
Proposed Alternative Method Permit or Closure Plan Application**

- Type of action:
- ☐ Permit of a pit, closed-loop system, below-grade tank, or proposed alternative method
- ☒ Closure of a pit, closed-loop system, below-grade tank, or proposed alternative method
- ☐ Modification to an existing permit
- ☐ Closure plan only submitted for an existing permitted or non-permitted pit, closed-loop system, below-grade tank, or proposed alternative method

**Instructions: Please submit one application (Form C-144) per individual pit, closed-loop system, below-grade tank or alternative request**

Please be advised that approval of this request does not relieve the operator of liability should operations result in pollution of surface water, ground water or the environment. Nor does approval relieve the operator of its responsibility to comply with any other applicable governmental authority's rules, regulations or ordinances.

1

Operator: **Burlington Resources Oil & Gas Company, LP** OGRID#: **14538**

Address: **P.O. Box 4289, Farmington, NM 87499**

Facility or well name: **ALLISON UNIT 123S**

API Number: **30-045-34955** OCD Permit Number: \_\_\_\_\_

U/L or Qtr/Qtr: **K(NE/SW)** Section: **9** Township: **32N** Range: **7W** County: **San Juan**

Center of Proposed Design: Latitude: **36.997** °N Longitude: **107.57231** °W NAD: ☐ 1927 ☒ 1983

Surface Owner: ☒ Federal ☐ State ☐ Private ☐ Tribal Trust or Indian Allotment

2

☒ **Pit:** Subsection F or G of 19.15.17.11 NMAC

Temporary: ☒ Drilling ☐ Workover

☐ Permanent ☐ Emergency ☐ Cavitation ☐ P&A

☒ Lined ☐ Unlined Liner type: Thickness **20** mil ☒ LLDPE ☐ HDPE ☐ PVC ☐ Other \_\_\_\_\_

☒ String-Reinforced

Liner Seams: ☒ Welded ☒ Factory ☐ Other \_\_\_\_\_ Volume: **7700** bbl Dimensions L **120'** x W **55'** x D **12'**

3

☐ **Closed-loop System:** Subsection H of 19.15.17.11 NMAC

Type of Operation: ☐ P&A ☐ Drilling a new well ☐ Workover or Drilling (Applies to activities which require prior approval of a permit or notice of intent)

☐ Drying Pad ☐ Above Ground Steel Tanks ☐ Haul-off Bins ☐ Other \_\_\_\_\_

☐ Lined ☐ Unlined Liner type: Thickness \_\_\_\_\_ mil ☐ LLDPE ☐ HDPE ☐ PVD ☐ Other \_\_\_\_\_

Liner Seams: ☐ Welded ☐ Factory ☐ Other \_\_\_\_\_

4

☐ **Below-grade tank:** Subsection I of 19.15.17.11 NMAC

Volume: \_\_\_\_\_ bbl Type of fluid: \_\_\_\_\_

Tank Construction material: \_\_\_\_\_

☐ Secondary containment with leak detection ☐ Visible sidewalls, liner, 6-inch lift and automatic overflow shut-off

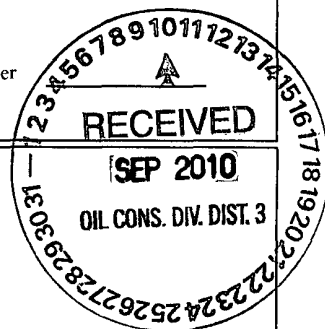
☐ Visible sidewalls and liner ☐ Visible sidewalls only ☐ Other \_\_\_\_\_

Liner Type: Thickness \_\_\_\_\_ mil ☐ HDPE ☐ PVC ☐ Other \_\_\_\_\_

5

☐ **Alternative Method:**

Submittal of an exception request is required. Exceptions must be submitted to the Santa Fe Environmental Bureau office for consideration of approval.



6

**Fencing:** Subsection D of 19.15.17.11 NMAC (*Applies to permanent pit, temporary pits, and below-grade tanks*)

- ☐ Chain link, six feet in height, two strands of barbed wire at top (*Required if located within 1000 feet of a permanent residence, school, hospital, institution or church*)
- ☐ Four foot height, four strands of barbed wire evenly spaced between one and four feet
- ☐ Alternate. Please specify \_\_\_\_\_

7

**Netting:** Subsection E of 19.15.17.11 NMAC (*Applies to permanent pits and permanent open top tanks*)

- ☐ Screen ☐ Netting ☐ Other \_\_\_\_\_
- ☐ Monthly inspections (*If netting or screening is not physically feasible*)

8

**Signs:** Subsection C of 19.15.17.11 NMAC

- ☐ 12" X 24", 2" lettering, providing Operator's name, site location, and emergency telephone numbers
- ☒ Signed in compliance with 19.15.3.103 NMAC

9

**Administrative Approvals and Exceptions:**

Justifications and/or demonstrations of equivalency are required. Please refer to 19.15.17 NMAC for guidance.

*Please check a box if one or more of the following is requested, if not leave blank:*

- ☐ Administrative approval(s): Requests must be submitted to the appropriate division district of the Santa Fe Environmental Bureau office for consideration of approval. (**Fencing/BGT Liner**)
- ☐ Exception(s): Requests must be submitted to the Santa Fe Environmental Bureau office for consideration of approval.

10

**Siting Criteria (regarding permitting) 19.15.17.10 NMAC**

*Instructions: The applicant must demonstrate compliance for each siting criteria below in the application. Recommendations of acceptable source material are provided below. Requests regarding changes to certain siting criteria may require administrative approval from the appropriate district office or may be considered an exception which must be submitted to the Santa Fe Environmental Bureau Office for consideration of approval. Applicant must attach justification for request. Please refer to 19.15.17.10 NMAC for guidance. Siting criteria does not apply to drying pads or above grade-tanks associated with a closed-loop system.*

**Ground water is less than 50 feet below the bottom of the temporary pit, permanent pit, or below-grade tank.**

- NM Office of the State Engineer - iWATERS database search; USGS; Data obtained from nearby wells

☐ Yes ☐ No

**Within 300 feet of a continuously flowing watercourse, or 200 feet of any other watercourse, lakebed, sinkhole, or playa lake (measured from the ordinary high-water mark).**

- Topographic map; Visual inspection (certification) of the proposed site

☐ Yes ☐ No

**Within 300 feet from a permanent residence, school, hospital, institution, or church in existence at the time of initial application.**

(*Applies to temporary, emergency, or cavitation pits and below-grade tanks*)

- Visual inspection (certification) of the proposed site; Aerial photo; Satellite image

☐ Yes ☐ No

☐ NA

**Within 1000 feet from a permanent residence, school, hospital, institution, or church in existence at the time of initial application.**

(*Applied to permanent pits*)

- Visual inspection (certification) of the proposed site; Aerial photo; Satellite image

☐ Yes ☐ No

☐ NA

**Within 500 horizontal feet of a private, domestic fresh water well or spring that less than five households use for domestic or stock watering purposes, or within 1000 horizontal feet of any other fresh water well or spring, in existence at the time of initial application.**

- NM Office of the State Engineer - iWATERS database search; Visual inspection (certification) of the proposed site.

☐ Yes ☐ No

**Within incorporated municipal boundaries or within a defined municipal fresh water well field covered under a municipal ordinance adopted pursuant to NMSA 1978, Section 3-27-3, as amended**

- Written confirmation or verification from the municipality; Written approval obtained from the municipality

☐ Yes ☐ No

**Within 500 feet of a wetland.**

- US Fish and Wildlife Wetland Identification map; Topographic map; Visual inspection (certification) of the proposed site

☐ Yes ☐ No

**Within the area overlying a subsurface mine.**

- Written confirmation or verification or map from the NM EMNRD - Mining and Mineral Division

☐ Yes ☐ No

**Within an unstable area.**

- Engineering measures incorporated into the design; NM Bureau of Geology & Mineral Resources; USGS; NM Geological Society; Topographic map

☐ Yes ☐ No

**Within a 100-year floodplain**

- FEMA map

☐ Yes ☐ No

11

**Temporary Pits, Emergency Pits and Below-grade Tanks Permit Application Attachment Checklist** Subsection B of 19.15.17.9 NMAC*Instructions: Each of the following items must be attached to the application. Please indicate, by a check mark in the box, that the documents are attached.*

- ☐ Hydrogeologic Report (Below-grade Tanks) - based upon the requirements of Paragraph (4) of Subsection B of 19.15.17.9 NMAC
- ☐ Hydrogeologic Data (Temporary and Emergency Pits) - based upon the requirements of Paragraph (2) of Subsection B of 19.15.17.9 NMAC
- ☐ Siting Criteria Compliance Demonstrations - based upon the appropriate requirements of 19.15.17.10 NMAC
- ☐ Design Plan - based upon the appropriate requirements of 19.15.17.11 NMAC
- ☐ Operating and Maintenance Plan - based upon the appropriate requirements of 19.15.17.12 NMAC
- ☐ Closure Plan (Please complete Boxes 14 through 18, if applicable) - based upon the appropriate requirements of Subsection C of 19.15.17.9 NMAC and 19.15.17.13 NMAC

☐ Previously Approved Design (attach copy of design)      API \_\_\_\_\_ or Permit \_\_\_\_\_

12

**Closed-loop Systems Permit Application Attachment Checklist:** Subsection B of 19.15.17.9 NMAC*Instructions: Each of the following items must be attached to the application. Please indicate, by a check mark in the box, that the documents are attached.*

- ☐ Geologic and Hydrogeologic Data (only for on-site closure) - based upon the requirements of Paragraph (3) of Subsection B of 19.15.17.9 NMAC
- ☐ Siting Criteria Compliance Demonstrations (only for on-site closure) - based upon the appropriate requirements of 19.15.17.10 NMAC
- ☐ Design Plan - based upon the appropriate requirements of 19.15.17.11 NMAC
- ☐ Operating and Maintenance Plan - based upon the appropriate requirements of 19.15.17.12 NMAC
- ☐ Closure Plan (Please complete Boxes 14 through 18, if applicable) - based upon the appropriate requirements of Subsection C of 19.15.17.9 NMAC and 19.15.17.13 NMAC

☐ Previously Approved Design (attach copy of design)      API \_\_\_\_\_

☐ Previously Approved Operating and Maintenance Plan      API \_\_\_\_\_

13

**Permanent Pits Permit Application Checklist:** Subsection B of 19.15.17.9 NMAC*Instructions: Each of the following items must be attached to the application. Please indicate, by a check mark in the box, that the documents are attached.*

- ☐ Hydrogeologic Report - based upon the requirements of Paragraph (1) of Subsection B of 19.15.17.9 NMAC
- ☐ Siting Criteria Compliance Demonstrations - based upon the appropriate requirements of 19.15.17.10 NMAC
- ☐ Climatological Factors Assessment
- ☐ Certified Engineering Design Plans - based upon the appropriate requirements of 19.15.17.11 NMAC
- ☐ Dike Protection and Structural Integrity Design: based upon the appropriate requirements of 19.15.17.11 NMAC
- ☐ Leak Detection Design - based upon the appropriate requirements of 19.15.17.11 NMAC
- ☐ Liner Specifications and Compatibility Assessment - based upon the appropriate requirements of 19.15.17.11 NMAC
- ☐ Quality Control/Quality Assurance Construction and Installation Plan
- ☐ Operating and Maintenance Plan - based upon the appropriate requirements of 19.15.17.12 NMAC
- ☐ Freeboard and Overtopping Prevention Plan - based upon the appropriate requirements of 19.15.17.11 NMAC
- ☐ Nuisance or Hazardous Odors, including H<sub>2</sub>S, Prevention Plan
- ☐ Emergency Response Plan
- ☐ Oil Field Waste Stream Characterization
- ☐ Monitoring and Inspection Plan
- ☐ Erosion Control Plan
- ☐ Closure Plan - based upon the appropriate requirements of Subsection C of 19.15.17.9 NMAC and 19.15.17.13 NMAC

14

**Proposed Closure:** 19.15.17.13 NMAC*Instructions: Please complete the applicable boxes, Boxes 14 through 18, in regards to the proposed closure plan.*

Type: ☐ Drilling ☐ Workover ☐ Emergency ☐ Cavitation ☐ P&A ☐ Permanent Pit ☐ Below-grade Tank ☐ Closed-loop System  
☐ Alternative

Proposed Closure Method: ☐ Waste Excavation and Removal  
☐ Waste Removal (Closed-loop systems only)  
☐ On-site Closure Method (only for temporary pits and closed-loop systems)  
☐ In-place Burial ☐ On-site Trench  
☐ Alternative Closure Method (Exceptions must be submitted to the Santa Fe Environmental Bureau for consideration)

15

**Waste Excavation and Removal Closure Plan Checklist** (19.15.17.13 NMAC) *Instructions: Each of the following items must be attached to the closure plan.**Please indicate, by a check mark in the box, that the documents are attached.*

- ☐ Protocols and Procedures - based upon the appropriate requirements of 19.15.17.13 NMAC
- ☐ Confirmation Sampling Plan (if applicable) - based upon the appropriate requirements of Subsection F of 19.15.17.13 NMAC
- ☐ Disposal Facility Name and Permit Number (for liquids, drilling fluids and drill cuttings)
- ☐ Soil Backfill and Cover Design Specifications - based upon the appropriate requirements of Subsection H of 19.15.17.13 NMAC
- ☐ Re-vegetation Plan - based upon the appropriate requirements of Subsection I of 19.15.17.13 NMAC
- ☐ Site Reclamation Plan - based upon the appropriate requirements of Subsection G of 19.15.17.13 NMAC

**Waste Removal Closure For Closed-loop Systems That Utilize Above Ground Steel Tanks or Haul-off Bins Only:** (19.15.17.13.D NMAC)

Instructions: Please identify the facility or facilities for the disposal of liquids, drilling fluids and drill cuttings. Use attachment if more than two facilities are required.

Disposal Facility Name: \_\_\_\_\_ Disposal Facility Permit #: \_\_\_\_\_

Disposal Facility Name: \_\_\_\_\_ Disposal Facility Permit #: \_\_\_\_\_

Will any of the proposed closed-loop system operations and associated activities occur on or in areas that will *not* be used for future service and

☐ Yes (If yes, please provide the information) ☐ No

Required for impacted areas which will not be used for future service and operations:

☐ Soil Backfill and Cover Design Specification - based upon the appropriate requirements of Subsection H of 19.15.17.13 NMAC

☐ Re-vegetation Plan - based upon the appropriate requirements of Subsection I of 19.15.17.13 NMAC

☐ Site Reclamation Plan - based upon the appropriate requirements of Subsection G of 19.15.17.13 NMAC

**Siting Criteria (Regarding on-site closure methods only:** 19.15.17.10 NMAC

Instructions: Each siting criteria requires a demonstration of compliance in the closure plan. Recommendations of acceptable source material are provided below. Requests regarding changes to certain siting criteria may require administrative approval from the appropriate district office or may be considered an exception which must be submitted to the Santa Fe Environmental Bureau office for consideration of approval. Justifications and/or demonstrations of equivalency are required. Please refer to 19.15.17.10 NMAC for guidance.

Ground water is less than 50 feet below the bottom of the buried waste.

- NM Office of the State Engineer - iWATERS database search; USGS; Data obtained from nearby wells

☐ Yes ☐ No

☐ N/A

Ground water is between 50 and 100 feet below the bottom of the buried waste

- NM Office of the State Engineer - iWATERS database search; USGS; Data obtained from nearby wells

☐ Yes ☐ No

☐ N/A

Ground water is more than 100 feet below the bottom of the buried waste.

- NM Office of the State Engineer - iWATERS database search; USGS; Data obtained from nearby wells

☐ Yes ☐ No

☐ N/A

Within 300 feet of a continuously flowing watercourse, or 200 feet of any other significant watercourse or lakebed, sinkhole, or playa lake (measured from the ordinary high-water mark).

- Topographic map; Visual inspection (certification) of the proposed site

☐ Yes ☐ No

Within 300 feet from a permanent residence, school, hospital, institution, or church in existence at the time of initial application.

- Visual inspection (certification) of the proposed site; Aerial photo; satellite image

☐ Yes ☐ No

☐ Yes ☐ No

Within 500 horizontal feet of a private, domestic fresh water well or spring that less than five households use for domestic or stock watering purposes, or within 1000 horizontal feet of any other fresh water well or spring, in existence at the time of the initial application.

- NM Office of the State Engineer - iWATERS database; Visual inspection (certification) of the proposed site

☐ Yes ☐ No

Within incorporated municipal boundaries or within a defined municipal fresh water well field covered under a municipal ordinance adopted pursuant to NMSA 1978, Section 3-27-3, as amended.

- Written confirmation or verification from the municipality; Written approval obtained from the municipality

☐ Yes ☐ No

Within 500 feet of a wetland

- US Fish and Wildlife Wetland Identification map; Topographic map; Visual inspection (certification) of the proposed site

☐ Yes ☐ No

Within the area overlying a subsurface mine.

- Written confirmation or verification or map from the NM EMNRD-Mining and Mineral Division

☐ Yes ☐ No

Within an unstable area.

- Engineering measures incorporated into the design; NM Bureau of Geology & Mineral Resources; USGS; NM Geological Society; Topographic map

☐ Yes ☐ No

Within a 100-year floodplain.

- FEMA map

☐ Yes ☐ No

**On-Site Closure Plan Checklist:** (19.15.17.13 NMAC) Instructions: Each of the following items must be attached to the closure plan. Please indicate, by a check mark in the box, that the documents are attached.

☐ Siting Criteria Compliance Demonstrations - based upon the appropriate requirements of 19.15.17.10 NMAC

☐ Proof of Surface Owner Notice - based upon the appropriate requirements of Subsection F of 19.15.17.13 NMAC

☐ Construction/Design Plan of Burial Trench (if applicable) based upon the appropriate requirements of 19.15.17.11 NMAC

☐ Construction/Design Plan of Temporary Pit (for in place burial of a drying pad) - based upon the appropriate requirements of 19.15.17.11 NMAC

☐ Protocols and Procedures - based upon the appropriate requirements of 19.15.17.13 NMAC

☐ Confirmation Sampling Plan (if applicable) - based upon the appropriate requirements of Subsection F of 19.15.17.13 NMAC

☐ Waste Material Sampling Plan - based upon the appropriate requirements of Subsection F of 19.15.17.13 NMAC

☐ Disposal Facility Name and Permit Number (for liquids, drilling fluids and drill cuttings or in case on-site closure standards cannot be achieved)

☐ Soil Cover Design - based upon the appropriate requirements of Subsection H of 19.15.17.13 NMAC

☐ Re-vegetation Plan - based upon the appropriate requirements of Subsection I of 19.15.17.13 NMAC

☐ Site Reclamation Plan - based upon the appropriate requirements of Subsection G of 19.15.17.13 NMAC

19

**Operator Application Certification:**

I hereby certify that the information submitted with this application is true, accurate and complete to the best of my knowledge and belief.

Name (Print): \_\_\_\_\_ Title: \_\_\_\_\_  
 Signature: \_\_\_\_\_ Date: \_\_\_\_\_  
 e-mail address: \_\_\_\_\_ Telephone: \_\_\_\_\_

20

**OCD Approval:** ☐ Permit Application (including closure plan) ☒ Closure Plan (only) ☐ OCD Conditions (see attachment)

**OCD Representative Signature:** [Signature] **Approval Date:** 1/30/11  
**Title:** Compliance Officer **OCD Permit Number:** \_\_\_\_\_

21

**Closure Report (required within 60 days of closure completion):** Subsection K of 19.15.17.13 NMAC

*Instructions: Operators are required to obtain an approved closure plan prior to implementing any closure activities and submitting the closure report. The closure report is required to be submitted to the division within 60 days of the completion of the closure activities. Please do not complete this section of the form until an approved closure plan has been obtained and the closure activities have been completed.*

☒ **Closure Completion Date:** April 15, 2010

22

**Closure Method:**

☐ Waste Excavation and Removal ☒ On-site Closure Method ☐ Alternative Closure Method ☐ Waste Removal (Closed-loop systems only)  
☐ If different from approved plan, please explain.

23

**Closure Report Regarding Waste Removal Closure For Closed-loop Systems That Utilize Above Ground Steel Tanks or Haul-off Bins Only:**

*Instructions: Please identify the facility or facilities for where the liquids, drilling fluids and drill cuttings were disposed. Use attachment if more than two facilities were utilized.*

Disposal Facility Name: \_\_\_\_\_ Disposal Facility Permit Number: \_\_\_\_\_

Disposal Facility Name: \_\_\_\_\_ Disposal Facility Permit Number: \_\_\_\_\_

Were the closed-loop system operations and associated activities performed on or in areas that *will not* be used for future service and operations?

☐ Yes (If yes, please demonstrate compliance to the items below) ☐ No

*Required for impacted areas which will not be used for future service and operations:*

☐ Site Reclamation (Photo Documentation)  
☐ Soil Backfilling and Cover Installation  
☐ Re-vegetation Application Rates and Seeding Technique

24

**Closure Report Attachment Checklist:** *Instructions: Each of the following items must be attached to the closure report. Please indicate, by a check mark in the box, that the documents are attached.*

☒ Proof of Closure Notice (surface owner and division)  
☒ Proof of Deed Notice (required for on-site closure)  
☒ Plot Plan (for on-site closures and temporary pits)  
☒ Confirmation Sampling Analytical Results (if applicable)  
☐ Waste Material Sampling Analytical Results (if applicable)  
☒ Disposal Facility Name and Permit Number  
☒ Soil Backfilling and Cover Installation  
☒ Re-vegetation Application Rates and Seeding Technique  
☒ Site Reclamation (Photo Documentation)

On-site Closure Location: Latitude: 36.9876 °N Longitude: 107.5506 °W NAD ☐ 1927 ☒ 1983

25

**Operator Closure Certification:**

*I hereby certify that the information and attachments submitted with this closure report is true, accurate and complete to the best of my knowledge and belief. I also certify that the closure complies with all applicable closure requirements and conditions specified in the approved closure plan.*

Name (Print): Marie E. Jaramillo Title: Staff Regulatory Tech  
 Signature: [Signature] Date: 9/8/10  
 e-mail address: marie.e.jaramillo@conocophillips.com Telephone: 305-326-9865

**Burlington Resources Oil Gas Company, LP**  
**San Juan Basin**  
**Closure Report**

**Lease Name: ALLISON UNIT 123S**

**API No.: 30-045-34955**

In accordance with Rule 19.15.17.13 NMAC the following information describes the closure of the temporary pit referenced above. All proper documentation regarding closure activities is being included with the C-144. The temporary pit for this location was constructed and location drilled before June 16, 2008 (effective date for Rule 19.15.17). While closure of the temporary pit did fall within the rule some dates for submittals are after the rig release date.

- Details on Capping and Covering, where applicable. **(See report)**
- Plot Plan (Pit Diagram) **(Included as an attachment)**
- Inspection Reports **(Included as an attachment)**
- Sampling Results **(Included as an attachment)**
- C-105 **(Included as an attachment)**
- Copy of Deed Notice will be filed with County Clerk **(Not required on Federal, State, or Tribal land as stated by FAQ dated October 30, 2008)**

**General Plan:**

1. All free standing liquids will be removed at the start of the pit closure process from the pit and disposed of in a division-approved facility or recycle, reuse or reclaim the liquids in a manner that the appropriate division district office approves.

**All recovered liquids were disposed of at Basin Disposal (Permit #NM-01-005) and any sludge or soil required to be removed to facilitate closure was hauled to Envirotech Land Farm (Permit #NM-01-011) and JFJ Landfarm % IEI (Permit #NM-01-0010B).**

2. The preferred method of closure for all temporary pits will be on-site burial, assuming that all the criteria listed in sub-section (B) of 19.15.17.13 are met.

**The pit was closed using onsite burial.**

3. The surface owner shall be notified of BR's closing of the temporary pit as per the approved closure plan using certified mail, return receipt requested.

**The closure process notification to the landowner was sent via email. (See Attached)(Well located on Federal Land, certified mail is not required for Federal Land per BLM/OCD MOU.)**

4. Within 6 months of the Rig Off status occurring BR will ensure that temporary pits are closed, re-contoured, and reseeded.

**Provision 4 of the closure plan requirements were not met due to rig move off date as noted on C-105 which was prior to pit rule change. Burlington will ensure compliance with this rule in the future.**

5. Notice of Closure will be given to the Aztec Division office between 72 hours and one week of closure via email, or verbally. The notification of closure will include the following:
  - i. Operator's name
  - ii. Location by Unit Letter, Section, Township, and Range. Well name and API number.

**Notification is attached.**

6. Liner of temporary pit shall be removed above "mud level" after stabilization. Removal of liner will consist of manually or mechanically cutting liner at mud level and removing all remaining liner. Care will be taken to remove "All" of the liner i.e., edges of liner entrenched or buried. All excessive liner will be disposed of at a licensed disposal facility.

**Liner of temporary pit was removed above "mud level" after stabilization. Removal of the liner consisted of manually cutting liner at mud level and removing all remaining liner. Care was taken to remove "ALL" of the liner i.e., edges of liner entrenched or buried. All excessive liner was disposed of at a licensed disposal facility, (San Juan County Landfill).**

7. Pit contents shall be mixed with non-waste containing, earthen material in order to achieve the solidification process. The solidification process will be accomplished using a combination of natural drying and mechanically mixing. Pit contents will be mixed with non-waste, earthen material to a consistency that is deemed a safe and stable. The mixing ratio shall not exceed 3 parts clean soil to 1 part pit contents.

**Burlington mixed the Pit contents with non-waste containing, earthen material in order to achieve the solidification process. The solidification process was accomplished by using a combination of natural drying and mechanically mixing. Pit contents were mixed with non-waste, earthen material to a consistency that is deemed as safe and stable. The mixing ratio consisted of approximately 3 parts clean soil to 1 part pit contents.**

8. A five point composite sample will be taken of the pit using sampling tools and all samples tested per Subsection B of 19.15.17.13(B)(1)(b). In the event that the criteria are not met, all contents will be handled per Subparagraph (a) of Paragraph (1) of Subsection B of 19.15.17.13 i.e., Dig and haul.

**A five point composite sample was taken of the pit using sampling tools and all samples tested per Subsection B of 19.15.17.1 3(B)( 1 )(b). (Sample results attached).**

Components	Tests Method	Limit (mg/Kg)	Results
Benzene	EPA SW-846 8021B or 8260B	0.2	36.4 ug/kg
BTEX	EPA SW-846 8021B or 8260B	50	349 ug/kG
TPH	EPA SW-846 418.1	2500	558mg/kg
GRO/DRO	EPA SW-846 8015M	500	71.2 mg/Kg
Chlorides	EPA 300.1	(1000)/500	100 mg/L

9. Upon completion of solidification and testing standards being passed, the pit area will be backfilled with compacted, non-waste containing, earthen material. A minimum of four feet of cover shall be achieved and the cover shall include one foot of suitable material to establish vegetation at the site, or the background thickness of topsoil, whichever is greater. If standard testing fails BR will dig and haul all contents pursuant to 19.15.17.13.i.a. After doing such, confirmation sampling will be conducted to ensure a release has not occurred.

**The pit material passed solidification and testing standards. The pit area was then backfilled with compacted, non-waste containing, earthen material. More than four feet of cover was achieved and the cover included one foot of suitable material to establish vegetation at the site.**

10. During the stabilization process if the liner is ripped by equipment the Aztec OCD office will be notified within 48 hours and the liner will be repaired if possible. If the liner can not be repaired then all contents will be excavated and removed.

**The integrity of the liner was not damaged in the pit closure process.**

11. Dig and Haul Material will be transported to the Envirotech Land Farm located 16 miles south of Bloomfield on Angel Peak Road, CR 7175. Permit # NM010011

**Dig and Haul was not required.**

12. Re-contouring of location will match fit, shape, line, form and texture of the surrounding. Re-shaping will include drainage control, prevent ponding, and prevent erosion. Natural drainages will be unimpeded and water bars and/or silt traps will be placed in areas where needed to prevent erosion on a large scale. Final re-contour shall have a uniform appearance with smooth surface, fitting the natural landscape.

**The pit area was re-contoured to match fit, shape, line, form and texture of the surrounding area. Re-shaping included drainage control, to prevent ponding and erosion. Natural drainages were unimpeded and water bars and/or silt traps were placed in areas where needed to prevent erosion on a large scale. Final re-contour has a uniform appearance with smooth surface, fitting the natural landscape.**

13. Notification will be sent to OCD when the reclaimed area is seeded.

**Provision 13 was accomplished through complying with BLM seeding requirements as allowed by the BLM/OCD MOU.**

14. BR shall seed the disturbed areas the first growing season after the operator closes the pit. Seeding will be accomplished via drilling on the contour whenever practical or by other division-approved methods. BLM or Forest Service stipulated seed mixes will be used on federal lands. Vegetative cover will equal 70% of the native perennial vegetative cover (un-impacted) consisting of at least three native plant species, including at least one grass, but not including noxious weeds, and maintain that cover through two successive growing seasons. Repeat seeding or planting will be continued until successful vegetative growth occurs.

**Provision 14 was accomplished through complying with BLM seeding requirements as allowed by the BLM/OCD MOU.**

15. The temporary pit will be located with a steel marker, no less than four inches in diameter, cemented in a hole three feet deep in the center of the onsite burial upon the abandonment of all the wells on the pad. The marker will be flush with the ground to allow access of the active well pad and for safety concerns. The marker will include a threaded collar to be used for future abandonment. The top of the marker will contain a welded steel 12" square plate that indicates the onsite burial of the temporary pit. The plate will be easily removable and a four foot tall riser will be threaded into the top of the collar marker and welded around the base with the operator's information at the time of all wells on the pad are abandoned. The operator's information will include the following: Operator Name, Lease Name, Well Name and number, Unit Number, Section, Township, Range and an indicator that the marker is an onsite burial location.

**Provision 15 was accomplished by installing a steel marker in the temporary pit, no less than four inches in diameter, cemented in a hole three feet deep in the center of the onsite burial. The marker is flush with the ground to allow access of the active well pad and for safety concerns. The top of the marker contains a welded steel 12" square plate that indicates the onsite burial of the temporary pit. The plate contains the following: Operator Name, Lease Name, Well Name and number, Unit Number, Section, Township, Range and an indicator that the marker is an onsite burial location.**

**The plate will be easily removable and a four foot tall riser will be threaded into the top of the collar marker and welded around the base with the following operator's information at the time of all wells on the pad are abandoned. The riser will be labeled: BR, BLM, ALLISON UNIT 1235, UL-K, Sec. 9, T 32N, R 7W, API # 30-045-34955**



## **Tally, Ethel**

---

**From:** Tally, Ethel <Ethel.Tally@conocophillips.com>  
**Sent:** Friday, April 17, 2009 9:45 AM  
**To:** 'mark\_kelly@nm.blm.gov' <mark\_kelly@nm.blm.gov>  
**Cc:** Sessions, Tamra D <Tamra.D.Sessions@conocophillips.com>  
**Subject:** Surface Owner Notification

The following locations will have temporary pits that will be closed on-site.

Walker 1B  
Allison Unit 1235

Please let Tamara Sessions (326-9834) or I know if you have any questions or concerns.

Thank You,

Ethel Tally  
ConocoPhillips-SJBU  
3401 E. 30th  
Farmington NM 87402  
(505)599-4027  
Ethel.Tally@ConocoPhillips.com

DISTRICT I  
1625 N. French Dr., Hobbs, N.M. 88240

DISTRICT II  
1301 W. Grand Ave., Artesia, N.M. 88210

DISTRICT III  
1000 Rio Brazos Rd., Aztec, N.M. 87410

DISTRICT IV  
1220 South St. Francis Dr., Santa Fe, NM 87505

State of New Mexico  
Energy, Minerals & Natural Resources Department

OIL CONSERVATION DIVISION

1220 South St. Francis Dr.  
Santa Fe, NM 87505

Form C-102

Revised October 12, 2005

Submit to Appropriate District Office

State Lease - 4 Copies

Fee Lease - 3 Copies

☐ AMENDED REPORT

WELL LOCATION AND ACREAGE DEDICATION PLAT

<sup>1</sup> API Number	<sup>2</sup> Pool Code	<sup>3</sup> Pool Name BASIN FRUITLAND COAL (GAS)
<sup>4</sup> Property Code A705684/A728679	<sup>5</sup> Property Name ALLISON UNIT	<sup>6</sup> Well Number 123S
<sup>7</sup> GRID No.	<sup>8</sup> Operator Name BURLINGTON RESOURCES OIL & GAS COMPANY LP	<sup>9</sup> Elevation 6648'

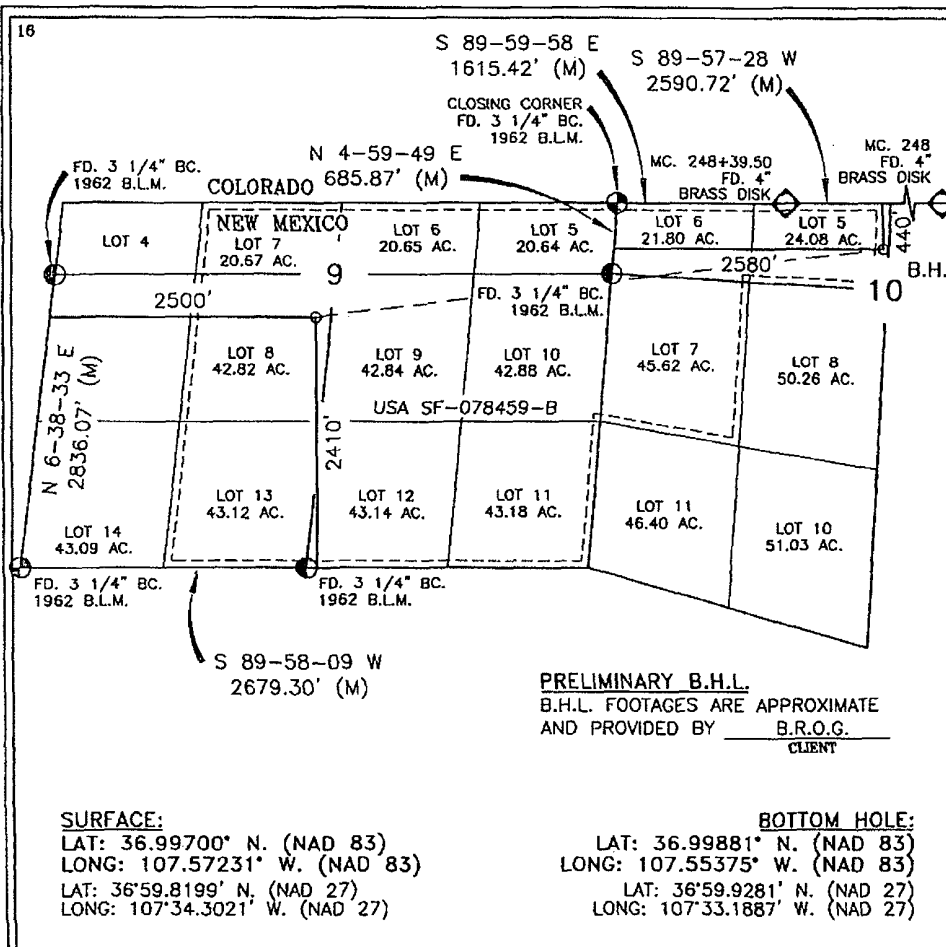
<sup>10</sup> Surface Location

UL or lot no.	Section	Township	Range	Lot Idn	Feet from the	North/South line	Feet from the	East/West line	County
K	9	32-N	7-W	8	2410	SOUTH	2500	WEST	SAN JUAN

<sup>11</sup> Bottom Hole Location If Different From Surface

UL or lot no.	Section	Township	Range	Lot Idn	Feet from the	North/South line	Feet from the	East/West line	County
F	10	32-N	7-W	5	440	NORTH	2580	WEST	SAN JUAN
<sup>12</sup> Dedicated Acres 411.44			<sup>13</sup> Joint or Infill		<sup>14</sup> Consolidation Code		<sup>15</sup> Order No.		

NO ALLOWABLE WILL BE ASSIGNED TO THIS COMPLETION UNTIL ALL INTERESTS HAVE BEEN CONSOLIDATED  
OR A NON-STANDARD UNIT HAS BEEN APPROVED BY THE DIVISION



17 OPERATOR CERTIFICATION

I hereby certify that the information contained herein is true and complete to the best of my knowledge and belief, and that this organization either owns a working interest or unleased mineral interest in the land including the proposed bottom hole location or has a right to drill this well at this location pursuant to a contract with an owner of such a mineral or working interest, or to a voluntary pooling agreement or a compulsory pooling order heretofore entered by the division.

Signature \_\_\_\_\_ Date \_\_\_\_\_

Printed Name \_\_\_\_\_

18 SURVEYOR CERTIFICATION

I hereby certify that the well location shown on this plat was plotted from field notes of actual surveys made by me or under my supervision, and that the same is true and correct to the best of my belief.

JANUARY 31, 2006  
Date of Survey

Signature and Seal of Registered Professional Surveyor

Certificate Number

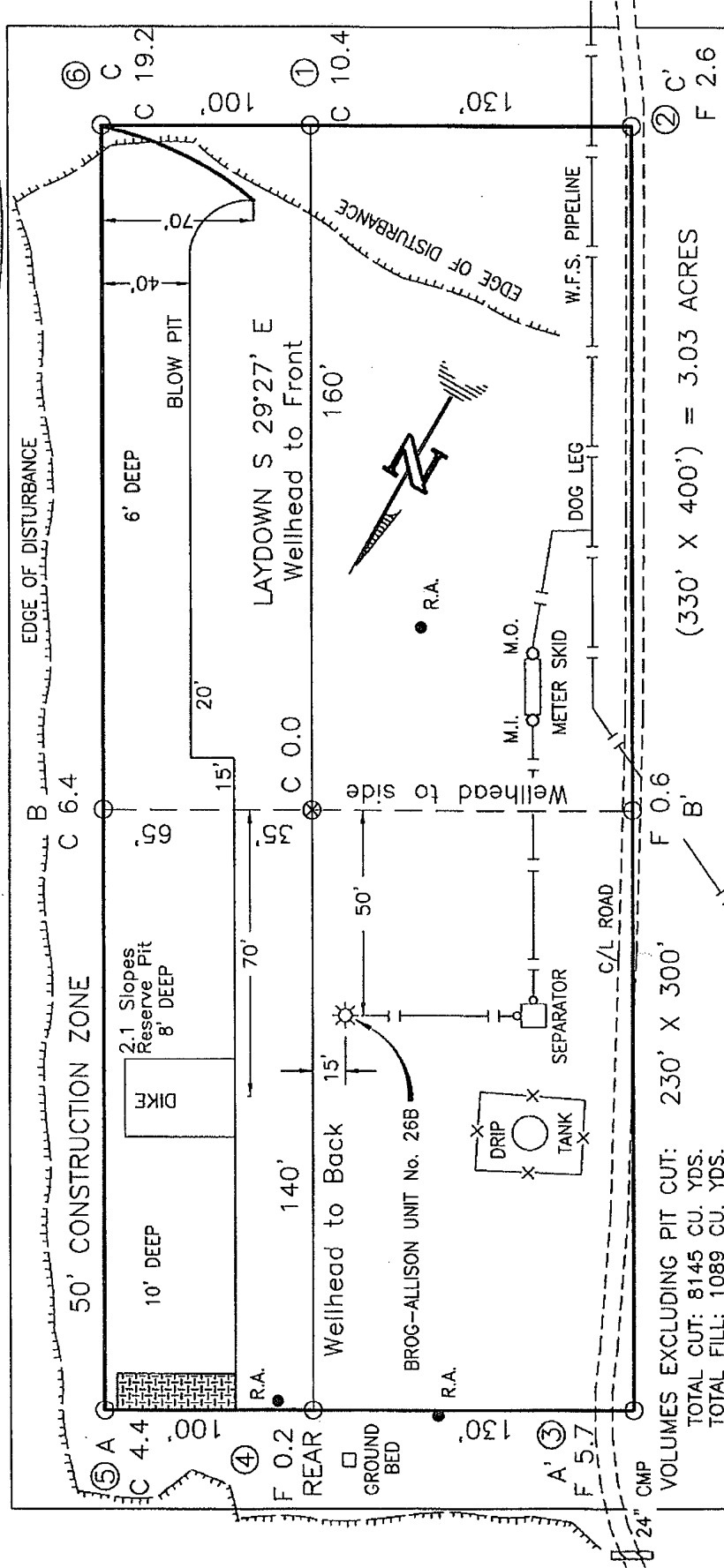
# BURLINGTON RESOURCES OIL & GAS COMPANY LP

ALLISON UNIT No. 123S, 2410 FSL 2500 FWL

SECTION 9, T-32-N, R-7-W, N.M.P.M., SAN JUAN COUNTY, NEW MEXICO

GROUND ELEVATION: 6648'; DATE: JANUARY 31, 2008

NAD 83  
LAT. = 36.99700° N.  
LONG. = 107.57231° W.  
NAD 27  
LAT. = 36°59.8199' N.  
LONG. = 107°34.3021' W.



RESERVE PIT DIKE: TO BE 8' ABOVE DEEP SIDE (OVERFLOW - 3' WIDE AND 1' ABOVE SHALLOW SIDE).  
BLOW PIT: OVERFLOW PIPE HALFWAY BETWEEN TOP AND BOTTOM AND TO EXTEND OVER PLASTIC LINER AND INTO BLOW PIT.

NOTE: DAGGETT ENTERPRISES, INC. IS NOT LIABLE FOR UNDERGROUND UTILITIES OR PIPELINES. NEW MEXICO ONE CALL TO BE NOTIFIED 48 HOURS PRIOR TO EXCAVATION OR CONSTRUCTION.

NOTE: CONTRACTOR SHOULD CALL ONE-CALL FOR LOCATION OF ANY MARKED OR UNMARKED BURIED PIPELINES OR CABLES ON WELL PAD AND OR ACCESS ROAD AT LEAST TWO (2) WORKING DAYS PRIOR TO CONSTRUCTION.

REVISION	DATE	APPROVED BY
LOCATION RESTAKE	2/6/08	C.V.
<b>Daggett Enterprises, Inc.</b> Surveying and Oil Field Services P. O. Box 510 Farmington, NM 87499 Phone (505) 326-1772 • Fax (505) 326-6019 NEW MEXICO L.S. 8894		
DRAWN BY: C.V.	CADFILE: BR674_PLB	DATE: 8/07/07
ROW#: BR674		



**envirotech**  
Analytical Laboratory

**EPA METHOD 8015 Modified  
Nonhalogenated Volatile Organics  
Total Petroleum Hydrocarbons**

Client:	ConocoPhillips	Project #:	96052-0026
Sample ID:	Reserve Pit	Date Reported:	11-16-09
Laboratory Number:	52426	Date Sampled:	11-10-09
Chain of Custody No:	8325	Date Received:	11-10-09
Sample Matrix:	Soil	Date Extracted:	11-12-09
Preservative:	Cool	Date Analyzed:	11-13-09
Condition:	Intact	Analysis Requested:	8015 TPH

Parameter	Concentration (mg/Kg)	Det. Limit (mg/Kg)
Gasoline Range (C5 - C10)	25.3	0.2
Diesel Range (C10 - C28)	45.9	0.1
Total Petroleum Hydrocarbons	71.2	0.2

ND - Parameter not detected at the stated detection limit.

References: Method 8015B, Nonhalogenated Volatile Organics, Test Methods for Evaluating Solid Waste, SW-846, USEPA, December 1996.

Comments: **Allison #123S**

Analyst

Review

**EPA METHOD 8015 Modified  
Nonhalogenated Volatile Organics  
Total Petroleum Hydrocarbons**

Client:	ConocoPhillips	Project #:	96052-0026
Sample ID:	Background	Date Reported:	11-16-09
Laboratory Number:	52427	Date Sampled:	11-10-09
Chain of Custody No:	8325	Date Received:	11-10-09
Sample Matrix:	Soil	Date Extracted:	11-12-09
Preservative:	Cool	Date Analyzed:	11-13-09
Condition:	Intact	Analysis Requested:	8015 TPH

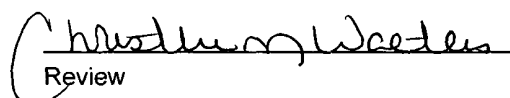
Parameter	Concentration (mg/Kg)	Det. Limit (mg/Kg)
Gasoline Range (C5 - C10)	ND	0.2
Diesel Range (C10 - C28)	ND	0.1
Total Petroleum Hydrocarbons	ND	0.2

ND - Parameter not detected at the stated detection limit.

References: Method 8015B, Nonhalogenated Volatile Organics, Test Methods for Evaluating Solid Waste, SW-846, USEPA, December 1996.

Comments: **Allison #123S**

  
Analyst

  
Review

**EPA Method 8015 Modified**  
**Nonhalogenated Volatile Organics**  
**Total Petroleum Hydrocarbons**

**Quality Assurance Report**

Client:	QA/QC	Project #:	N/A
Sample ID:	11-13-09 QA/QC	Date Reported:	11-16-09
Laboratory Number:	52426	Date Sampled:	N/A
Sample Matrix:	Methylene Chloride	Date Received:	N/A
Preservative:	N/A	Date Analyzed:	11-13-09
Condition:	N/A	Analysis Requested:	TPH

	I-Cal Date	I-Cal RF	C-Cal RF	% Difference	Accept Range
Gasoline Range C5 - C10	05-07-07	1.0067E+003	1.0071E+003	0.04%	0 - 15%
Diesel Range C10 - C28	05-07-07	1.1120E+003	1.1125E+003	0.04%	0 - 15%

Blank Conc. (mg/L - mg/Kg)	Concentration	Detection Limit
Gasoline Range C5 - C10	ND	0.2
Diesel Range C10 - C28	ND	0.1
Total Petroleum Hydrocarbons	ND	0.2

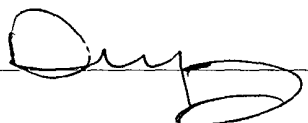
Duplicate Conc. (mg/Kg)	Sample	Duplicate	% Difference	Accept Range
Gasoline Range C5 - C10	25.3	25.1	0.8%	0 - 30%
Diesel Range C10 - C28	45.9	39.6	13.7%	0 - 30%

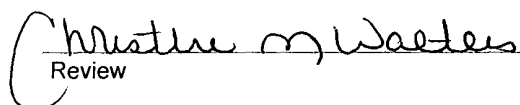
Spike Conc. (mg/Kg)	Sample	Spike Added	Spike Result	% Recovery	Accept Range
Gasoline Range C5 - C10	25.3	250	262	95.3%	75 - 125%
Diesel Range C10 - C28	45.9	250	283	95.6%	75 - 125%

ND - Parameter not detected at the stated detection limit.

References: Method 8015B, Nonhalogenated Volatile Organics, Test Methods for Evaluating Solid Waste, SW-846, USEPA, December 1996.

Comments: QA/QC for Samples 52426 - 52434 and 52440.

Analyst 

Review 



# envirotech

Analytical Laboratory

## EPA METHOD 8021 AROMATIC VOLATILE ORGANICS

Client:	ConocoPhillips	Project #:	96052-0026
Sample ID:	Reserve Pit	Date Reported:	11-16-09
Laboratory Number:	52426	Date Sampled:	11-10-09
Chain of Custody:	8325	Date Received:	11-10-09
Sample Matrix:	Soil	Date Analyzed:	11-13-09
Preservative:	Cool	Date Extracted:	11-12-09
Condition:	Intact	Analysis Requested:	BTEX

Parameter	Concentration (ug/Kg)	Det. Limit (ug/Kg)
Benzene	36.4	0.9
Toluene	102	1.0
Ethylbenzene	26.2	1.0
p,m-Xylene	140	1.2
o-Xylene	43.9	0.9
Total BTEX	349	

ND - Parameter not detected at the stated detection limit.

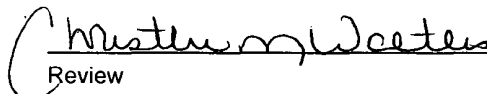
Surrogate Recoveries:	Parameter	Percent Recovery
	Fluorobenzene	99.0 %
	1,4-difluorobenzene	99.0 %
	Bromochlorobenzene	99.0 %

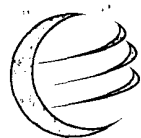
References: Method 5030B, Purge-and-Trap, Test Methods for Evaluating Solid Waste, SW-846, USEPA, December 1996.

Method 8021B, Aromatic Volatile Organics, Test Methods for Evaluating Solid Waste, SW-846, USEPA, December 1996.

Comments: Allison #123S

  
Analyst

  
Review



# envirotech

Analytical Laboratory

## EPA METHOD 8021 AROMATIC VOLATILE ORGANICS

Client:	ConocoPhillips	Project #:	96052-0026
Sample ID:	Background	Date Reported:	11-16-09
Laboratory Number:	52427	Date Sampled:	11-10-09
Chain of Custody:	8325	Date Received:	11-10-09
Sample Matrix:	Soil	Date Analyzed:	11-13-09
Preservative:	Cool	Date Extracted:	11-12-09
Condition:	Intact	Analysis Requested:	BTEX

Parameter	Concentration (ug/Kg)	Det. Limit (ug/Kg)
Benzene	ND	0.9
Toluene	ND	1.0
Ethylbenzene	ND	1.0
p,m-Xylene	ND	1.2
o-Xylene	ND	0.9
Total BTEX	ND	

ND - Parameter not detected at the stated detection limit.

Surrogate Recoveries:	Parameter	Percent Recovery
	Fluorobenzene	99.0 %
	1,4-difluorobenzene	99.0 %
	Bromochlorobenzene	99.0 %

References: Method 5030B, Purge-and-Trap, Test Methods for Evaluating Solid Waste, SW-846, USEPA, December 1996.

Method 8021B, Aromatic Volatile Organics, Test Methods for Evaluating Solid Waste, SW-846, USEPA, December 1996.

Comments: Allison #123S

Analyst

Review





Client:	N/A	Project #:	N/A
Sample ID:	11-13-BT QA/QC	Date Reported:	11-16-09
Laboratory Number:	52426	Date Sampled:	N/A
Sample Matrix:	Soil	Date Received:	N/A
Preservative:	N/A	Date Analyzed:	11-13-09
Condition:	N/A	Analysis:	BTEX

Calibration and Detection Limits (ug/L)	I-Cal RF:	C-Cal RF:	%Diff:	Blank Conc	Detect. Limit
		Accept. Range 0 - 15%			
Benzene	1.4872E+006	1.4902E+006	0.2%	ND	0.1
Toluene	1.3783E+006	1.3810E+006	0.2%	ND	0.1
Ethylbenzene	1.2348E+006	1.2373E+006	0.2%	ND	0.1
p,m-Xylene	3.1421E+006	3.1484E+006	0.2%	ND	0.1
o-Xylene	1.1670E+006	1.1693E+006	0.2%	ND	0.1

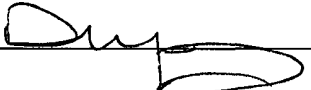
Duplicate Conc. (ug/Kg)	Sample	Duplicate	%Diff:	Accept Range	Detect. Limit
Benzene	36.4	36.0	1.1%	0 - 30%	0.9
Toluene	102	107	4.7%	0 - 30%	1.0
Ethylbenzene	26.2	26.1	0.4%	0 - 30%	1.0
p,m-Xylene	140	136	2.4%	0 - 30%	1.2
o-Xylene	43.9	43.8	0.2%	0 - 30%	0.9

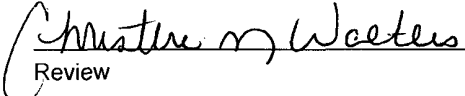
Spike Conc. (ug/Kg)	Sample	Amount Spiked	Spiked Sample	% Recovery	Accept Range
Benzene	36.4	50.0	85.1	98.5%	39 - 150
Toluene	102	50.0	149	98.3%	46 - 148
Ethylbenzene	26.2	50.0	75.1	98.6%	32 - 160
p,m-Xylene	140	100	235	98.1%	46 - 148
o-Xylene	43.9	50.0	92.5	98.5%	46 - 148

ND - Parameter not detected at the stated detection limit.

References: Method 5030B, Purge-and-Trap, Test Methods for Evaluating Solid Waste, SW-846, USEPA, December 1996.  
Method 8021B, Aromatic and Halogenated Volatiles by Gas Chromatography Using Photoionization and/or Electrolytic Conductivity Detectors, SW-846, USEPA December 1996.

**Comments: QA/QC for Samples 52426 - 52434 and 52440.**

Analyst 

Review 



Client:	ConocoPhillips	Project #:	96052-0026
Sample ID:	Reserve Pit	Date Reported:	11-17-09
Laboratory Number:	52426	Date Sampled:	11-10-09
Chain of Custody No:	8325	Date Received:	11-10-09
Sample Matrix:	Soil	Date Extracted:	11-13-09
Preservative:	Cool	Date Analyzed:	11-13-09
Condition:	Intact	Analysis Needed:	TPH-418.1

Parameter	Concentration (mg/kg)	Det. Limit (mg/kg)
-----------	--------------------------	--------------------------

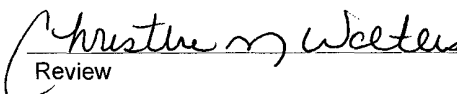
Total Petroleum Hydrocarbons	558	9.8
------------------------------	-----	-----

ND = Parameter not detected at the stated detection limit.

References: Method 418.1, Petroleum Hydrocarbons, Total Recoverable, Chemical Analysis of Water and Waste, USEPA Storet No. 4551, 1978.

Comments: Allison #123S.

  
Analyst

  
Review



Client:	ConocoPhillips	Project #:	96052-0026
Sample ID:	Background	Date Reported:	11-17-09
Laboratory Number:	52427	Date Sampled:	11-10-09
Chain of Custody No:	8325	Date Received:	11-10-09
Sample Matrix:	Soil	Date Extracted:	11-13-09
Preservative:	Cool	Date Analyzed:	11-13-09
Condition:	Intact	Analysis Needed:	TPH-418.1

Parameter	Concentration (mg/kg)	Det. Limit (mg/kg)
Total Petroleum Hydrocarbons	16.8	9.8

ND = Parameter not detected at the stated detection limit.

References: Method 418.1, Petroleum Hydrocarbons, Total Recoverable, Chemical Analysis of Water and Waste, USEPA Storet No. 4551, 1978.

Comments: **Allison #123S.**

Analyst

Review



# envirotech

Analytical Laboratory

EPA METHOD 418.1  
TOTAL PETROLEUM  
HYDROCARBONS  
QUALITY ASSURANCE REPORT

Client:	QA/QC	Project #:	N/A
Sample ID:	QA/QC	Date Reported:	11-17-09
Laboratory Number:	11-13-TPH.QA/QC 52426	Date Sampled:	N/A
Sample Matrix:	Freon-113	Date Analyzed:	11-13-09
Preservative:	N/A	Date Extracted:	11-13-09
Condition:	N/A	Analysis Needed:	TPH

Calibration	I-Cal Date	C-Cal Date	I-Cal RF:	C-Cal RF:	% Difference	Accept. Range
	11-02-09	11-13-09	1,750	1,830	4.6%	+/- 10%

Blank Conc. (mg/Kg)	Concentration	Detection Limit
TPH	ND	9.8

Duplicate Conc. (mg/Kg)	Sample	Duplicate	% Difference	Accept. Range
TPH	558	489	12.5%	+/- 30%

Spike Conc. (mg/Kg)	Sample	Spike Added	Spike Result	% Recovery	Accept Range
TPH	558	2,000	2,510	98.1%	80 - 120%

ND = Parameter not detected at the stated detection limit.

References: Method 418.1, Petroleum Hydrocarbons, Total Recoverable, Chemical Analysis of Water and Waste, USEPA Storet No. 4551, 1978.

Comments: QA/QC for Samples 52426 - 52429 and 52446 - 52448.

Analyst

Review



Client:	ConocoPhillips	Project #:	96052-0026
Sample ID:	Reserve Pit	Date Reported:	11-17-09
Lab ID#:	52426	Date Sampled:	11-10-09
Sample Matrix:	Soil	Date Received:	11-10-09
Preservative:	Cool	Date Analyzed:	11-13-09
Condition:	Intact	Chain of Custody:	8325


Parameter	Concentration (mg/Kg)
-----------	-----------------------

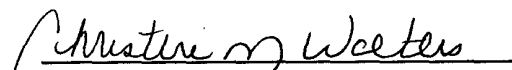
**Total Chloride**

**100**

Reference: U.S.E.P.A., 4500B, "Methods for Chemical Analysis of Water and Wastes", 1983.  
Standard Methods For The Examination of Water And Waste Water", 18th ed., 1992.

Comments: **Allison #123S.**

  
Analyst

  
Review



Client:	ConocoPhillips	Project #:	96052-0026
Sample ID:	Background	Date Reported:	11-17-09
Lab ID#:	52427	Date Sampled:	11-10-09
Sample Matrix:	Soil	Date Received:	11-10-09
Preservative:	Cool	Date Analyzed:	11-13-09
Condition:	Intact	Chain of Custody:	8325

Parameter	Concentration (mg/Kg)
Total Chloride	10

Reference: U.S.E.P.A., 4500B, "Methods for Chemical Analysis of Water and Wastes", 1983.  
Standard Methods For The Examination of Water And Waste Water", 18th ed., 1992.

Comments: **Allison #123S.**

Analyst

Review

Submit To Appropriate District Office Two Copies District I 1625 N. French Dr., Hobbs, NM 88240 District II 1301 W. Grand Avenue, Artesia, NM 88210 District III 1000 Rio Brazos Rd., Aztec, NM 87410 District IV 1220 S. St. Francis Dr., Santa Fe, NM 87505	<b>State of New Mexico</b> <b>Energy, Minerals and Natural Resources</b>  <b>Oil Conservation Division</b> <b>1220 South St. Francis Dr.</b> <b>Santa Fe, NM 87505</b>	<b>Form C-105</b> July 17, 2008
--	---	------------------------------------

<b>WELL COMPLETION OR RECOMPLETION REPORT AND LOG</b>	1. WELL API NO. <b>30-045-34955</b> 2. Type of Lease <input type="checkbox"/> STATE <input type="checkbox"/> FEE <input checked="" type="checkbox"/> FED/INDIAN 3. State Oil & Gas Lease No. <b>SF-078459-B</b>
---	--

4. Reason for filing:  <input type="checkbox"/> <b>COMPLETION REPORT</b> (Fill in boxes #1 through #31 for State and Fee wells only)  <input checked="" type="checkbox"/> <b>C-144 CLOSURE ATTACHMENT</b> (Fill in boxes #1 through #9, #15 Date Rig Released and #32 and/or #33; attach this and the plat to the C-144 closure report in accordance with 19.15.17.13.K NMAC)	5. Lease Name or Unit Agreement Name <b>ALLISON UNIT</b> 6. Well Number: <b>123S</b>
---	---

7. Type of Completion: <input checked="" type="checkbox"/> NEW WELL <input type="checkbox"/> WORKOVER <input type="checkbox"/> DEEPENING <input type="checkbox"/> PLUGBACK <input type="checkbox"/> DIFFERENT RESERVOIR <input type="checkbox"/> OTHER									
---	--	--	--	--	--	--	--	--	--

8. Name of Operator <b>Burlington Resources Oil Gas Company, LP</b>	9. OGRID <b>14538</b>
--	--------------------------

10. Address of Operator PO Box 4298, Farmington, NM 87499										11. Pool name or Wildcat	
--	--	--	--	--	--	--	--	--	--	--------------------------	--

12. Location	Unit Ltr	Section	Township	Range	Lot	Feet from the	N/S Line	Feet from the	E/W Line	County
<b>Surface:</b>										
<b>BH:</b>										

13. Date Spudded	14. Date T.D. Reached	15. Date Rig Released <b>08/15/09</b>	16. Date Completed (Ready to Produce)	17. Elevations (DF and RKB, RT, GR, etc.)
------------------	-----------------------	--	---------------------------------------	---

18. Total Measured Depth of Well	19. Plug Back Measured Depth	20. Was Directional Survey Made?	21. Type Electric and Other Logs Run
----------------------------------	------------------------------	----------------------------------	--------------------------------------

22. Producing Interval(s), of this completion - Top, Bottom, Name	
---	--

<b>23. CASING RECORD (Report all strings set in well)</b>					
CASING SIZE	WEIGHT LB./FT.	DEPTH SET	HOLE SIZE	CEMENTING RECORD	AMOUNT PULLED

<b>24. LINER RECORD</b>				<b>25. TUBING RECORD</b>			
SIZE	TOP	BOTTOM	SACKS CEMENT	SCREEN	SIZE	DEPTH SET	PACKER SET

26. Perforation record (interval, size, and number)	27. ACID, SHOT, FRACTURE, CEMENT, SQUEEZE, ETC.
	DEPTH INTERVAL    AMOUNT AND KIND MATERIAL USED

<b>28. PRODUCTION</b>							
Date First Production		Production Method ( <i>Flowing, gas lift, pumping - Size and type pump</i> )				Well Status ( <i>Prod. or Shut-in</i> )	
Date of Test	Hours Tested	Choke Size	Prod'n For Test Period	Oil - Bbl	Gas - MCF	Water - Bbl.	Gas - Oil Ratio
Flow Tubing Press.	Casing Pressure	Calculated 24-Hour Rate	Oil - Bbl.	Gas - MCF	Water - Bbl.	Oil Gravity - API - ( <i>Corr.</i> )	

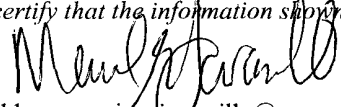
29. Disposition of Gas ( <i>Sold, used for fuel, vented, etc.</i> )	30. Test Witnessed By
---	-----------------------

31. List Attachments	
----------------------	--

32. If a temporary pit was used at the well, attach a plat with the location of the temporary pit.	
--	--

33. If an on-site burial was used at the well, report the exact location of the on-site burial:	
---	--

Latitude <b>36.9876°N</b> Longitude <b>107.5506°W</b> NAD <input type="checkbox"/> 1927 <input checked="" type="checkbox"/> 1983	
--	--

I hereby certify that the information shown on both sides of this form is true and complete to the best of my knowledge and belief			
Signature		Printed Name	Title
		Marie E. Jaramillo	Sraff Regulatory Tech
E-mail Address		Date: 9/8/2010	
marie.e.jaramillo@conocophillips.com			



**Pit Closure Form:**

Date: 4-15-10

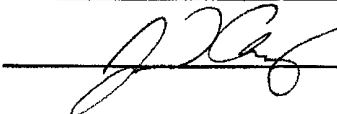
Well Name: ALLISON #1235

Footages: 2410' FSL, 2500' FWL Unit Letter: K

Section: 9, T-32 -N, R-07 -W, County: SAN JUAN State: NM

Contractor Closing Pit: ACE SERVICES

Construction Inspector: JARED CHAVEZ Date: 4-15-10

Inspector Signature: 



## Jaramillo, Marie E

---

**From:** Payne, Wendy F  
**Sent:** Tuesday, April 13, 2010 10:01 AM  
**To:** 'acedragline@yahoo.com'; 'bko@digii.net'; 'brook@crossfire-llc.com'; COP - Reclamation Department; GRP:SJBU Regulatory; 'Isaiah Lee'; 'tevans48@msn.com'; Mark Kelly; Robert Switzer; Sherrie Landon; Becker, Joey W; Bowker, Terry D; Gordon Chenault; GRP:SJBU Production Leads; Hockett, Christy R; Johnson, Kirk L; KENDAL BASSING; Kennedy, Jim R; Lopez, Richard A; O'Nan, Mike J.; Peace, James T; Pierce, Richard M; Poulson, Mark E; Silverman, Jason M; Smith, Randall O; Spearman, Bobby E; Stamets, Steve A; Thacker, LARRY; Work, Jim A; Blair, Maxwell O; Blakley, Mac; Clark, Joni E; Farrell, Juanita R; Gillette, Steven L (Gray Surface Specialties and Consulting, Ltd.); Greer, David A; Hines, Derek J (Finney Land Co.); Maxwell, Mary Alice; McWilliams, Peggy L; Seabolt, Elmo F; Stallsmith, Mark R  
**Subject:** Reclamation Notice - Allison Unit 123S  
**Attachments:** Allison Unit 123S.pdf

ACE Services will start the reclamation process for Allison Unit 123S, Thursday, April 15th 2010.

Please contact Norm Faver (320-0670) if you have any questions or need further assistance.



Allison Unit  
123S.pdf (74 KB)

**Burlington Resources Well- Network #: 10252265 (D250 for reclaim and seeding D260 for reclaim pit)**

**San Juan County, NM**

**ALLISON UNIT 123S – BLM surface / BLM minerals**

**Twin:** Allison Unit 26B

2410' FSL, 2500' FWL

SEC.9, T32N, R07W

Unit Letter 'K'

Lease #: SF-078459-B

Latitude: 36° 59 min 49.20000 sec N (NAD 83)

Longitude: 107° 34 min 20.31600 sec W (NAD83)

API #: 30-045-34955

**Please let us know if you have any questions or need additional information.**

**Wendy Payne**  
**ConocoPhillips-SJBU**  
**505-326-9533**  
*Wendy.F.Payne@conocophillips.com*



**Reclamation Form:**

Date: 6/7/10

Well Name: ALISON UNIT 123S

Footages: 2410' FSL, 2500' FWL Unit Letter: K

Section: 9, T-32-N, R-07-W, County: SAN JUAN State: NM

Reclamation Contractor: ACE SERVICES

Reclamation Date: 4/16/10

Road Completion Date: 4/29/10

Seeding Date: 5/10/10

**\*\*PIT MAKER STATUS (When Required):**

MARKER PLACED : 4/26/10 (DATE)

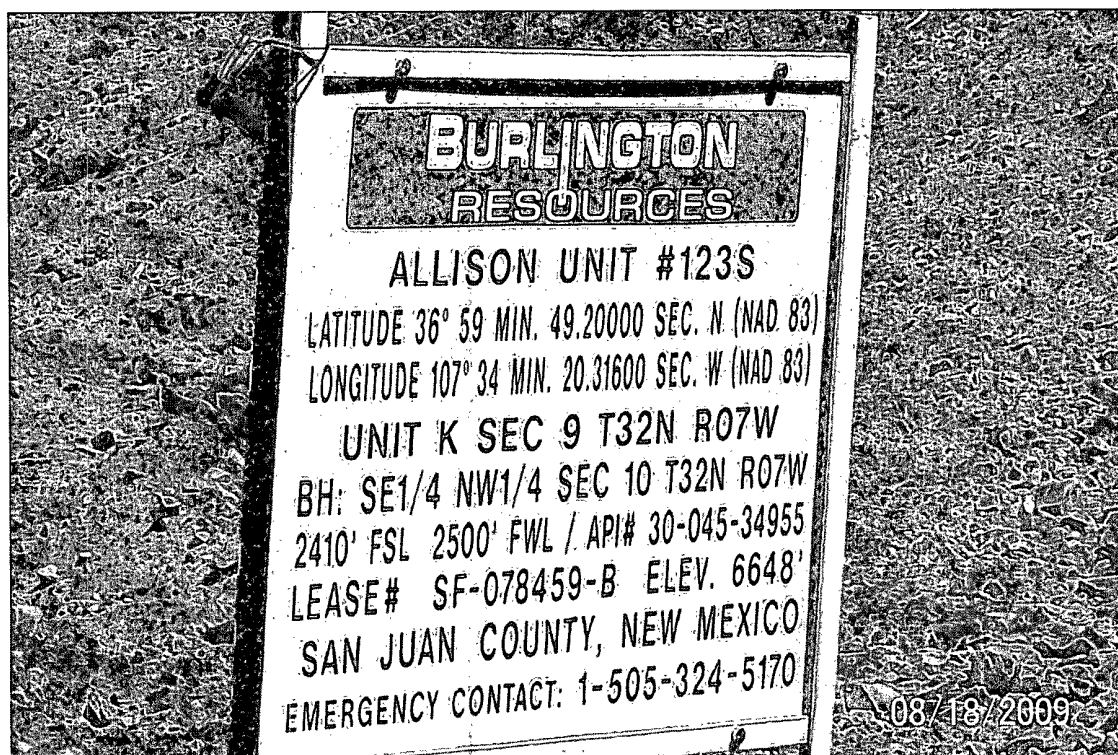
LATITUDE: N36.9878

LONGITUDE: W107.5506

Construction Inspector: JARED CHAVEZ Date: 6/7/10

Inspector Signature: 

BLM





## WELL PAD SAFETY AND ENVIRONMENTAL CHECK LIST

WELL NAME: ALLISON UNIT 123S

API#: 30-045-34955

DATE	INSPECTOR	LOCATION CHECK	ENVIRONMENTAL COMPLIANCE	PICTURES TAKEN	COMMENTS
07/13/09	JARED CHAVEZ				AWS#730 IS ON LOCATION
07/20/09	JARED CHAVEZ				AWS#730 IS ON LOCATION
07/27/09	JARED CHAVEZ				AWS#730 IS ON LOCATION
08/10/09	JARED CHAVEZ				AWS#730 IS ON LOCATION
08/18/09	JARED CHAVEZ	X	X		PIT AND LOCATION IN GOOD CONDITION
09/21/09	JARED CHAVEZ				AWS#731 IS ON LOCATION
09/28/09	JARED CHAVEZ				AWS#731 IS ON LOCATION
10/05/09	JARED CHAVEZ				AWS#731 IS ON LOCATION
10/12/09	JARED CHAVEZ				AWS#731 IS ON LOCATION
10/19/09	JARED CHAVEZ				AWS#731 IS MOVING OFF LOCATION
10/26/09	JARED CHAVEZ	X	X		FENCE NEEDS TIGHTENED, HOLES IN THE LINER - CONTACTED CROSSFIRE FOR REPAIRS
11/2/09	JARED	X	X		HOLE IN THE LINER ALONG FENCE LINE-

	CHAVEZ					CONTACTED CROSSFIRE FOR REPAIRS
11/10/09	JARED CHAVEZ	X		X		PIT AND LOCATION IN GOOD CONDITION
11/16/09	JARED CHAVEZ	X		X		FENCE NEEDS TIGHTENED-CONTACTED CROSSFIRE FOR REPAIRS
11/23/09	JARED CHAVEZ	X		X		PIT AND LOCATION IN GOOD CONDITION
12/01/09	JARED CHAVEZ	X		X		PIT AND LOCATION IN GOOD CONDITION
12/14/09	JARED CHAVEZ	X		X		PIT AND LOCATION IN GOOD CONDITION
01/05/10	JARED CHAVEZ	X		X		PIT AND LOCATION IN GOOD CONDITION
01/13/10	JARED CHAVEZ	X		X		PIT AND LOCATION IN GOOD CONDITION
02/01/10	FREDDIE MARTINEZ	X		X	X	HAD TO WALK TO LOCATION FROM GATE ROAD NOT BLADED SNOW'S TO DEEP TO DRIVE TO LOCATION
02/08/10	FREDDIE MARTINEZ				X	TRIED TO MAKE IT TO LOCATION ROAD WASN'T BLADED AT ALL TO LOCATION FROM GATE
02/11/10	FREDDIE MARTINEZ	X		X	X	SNOW TO LOCATION WALKED IN TO GET PICTURES NO REPAIRS
04/01/10	FREDDIE MARTINEZ	X		X	X	
04/09/10	FREDDIE MARTINEZ	X		X	X	
04/16/10	FREDDIE MARTINEZ	X		X	X	