

**UNITED STATES
DEPARTMENT OF THE INTERIOR
BUREAU OF LAND MANAGEMENT**

FEB 07 2011

Sundry Notices and Reports on Wells

1. Type of Well
GAS5. Lease Number
NM-0138606. If Indian, All. or
Tribe Name

7. Unit Agreement Name

2. Name of Operator

ConocoPhillips8. Well Name & Number
Hardie 5

3. Address & Phone No. of Operator

PO Box 4289, Farmington, NM 87499 (505) 326-9700

9. API Well No.

30-045-20257

4. Location of Well, Footage, Sec., T, R, M

Unit O (SWSE), 1020' FSL & 1850' FEL, Section 23, T28N, R8W, NMPM

10. Field and Pool
Blanco MV / Basin DK11. County and State
San Juan, NM**12. CHECK APPROPRIATE BOX TO INDICATE NATURE OF NOTICE, REPORT, OTHER DATA**

Type of Submission

☒ Notice of Intent☐ Subsequent Report☐ Final Abandonment

Type of Action

☐ Abandonment☒ Recompletion☐ Plugging☐ Casing Repair☐ Altering Casing☐ Change of Plans☐ New Construction☐ Non-Routine Fracturing☐ Water Shut off☐ Conversion to Injection☐ Other -**13. Describe Proposed or Completed Operations**

ConocoPhillips Company requestes permission to recomplate the Mesaverde formation for the subject well per the attached procedure, current wellbore schematic and C102. The DHC will be submitted as soon as possible.

RCVD FEB 10 '11

OIL CONS. DIV.

DIST. 3

file CBL & Review with OCO before Pelfing &

14. I hereby certify that the foregoing is true and correct.Signed Crystal Tafoya Crystal TafoyaTitle Staff Regulatory TechnicianDate 2/7/11

(This space for Federal or State Office use)

APPROVED BY Original Signed: Stephen Mason Title _____Date FEB 09 2011

CONDITION OF APPROVAL, if any:

Title 18 U.S.C. Section 1001, makes it a crime for any person knowingly and willfully to make any department or agency of the United States any false, fictitious or fraudulent statements or representations as to any matter within its jurisdiction.

NMCCO

PC

Hardie Unit #5

Unit O, Section 23, Township 28N, Range 08W

API# 3004520257

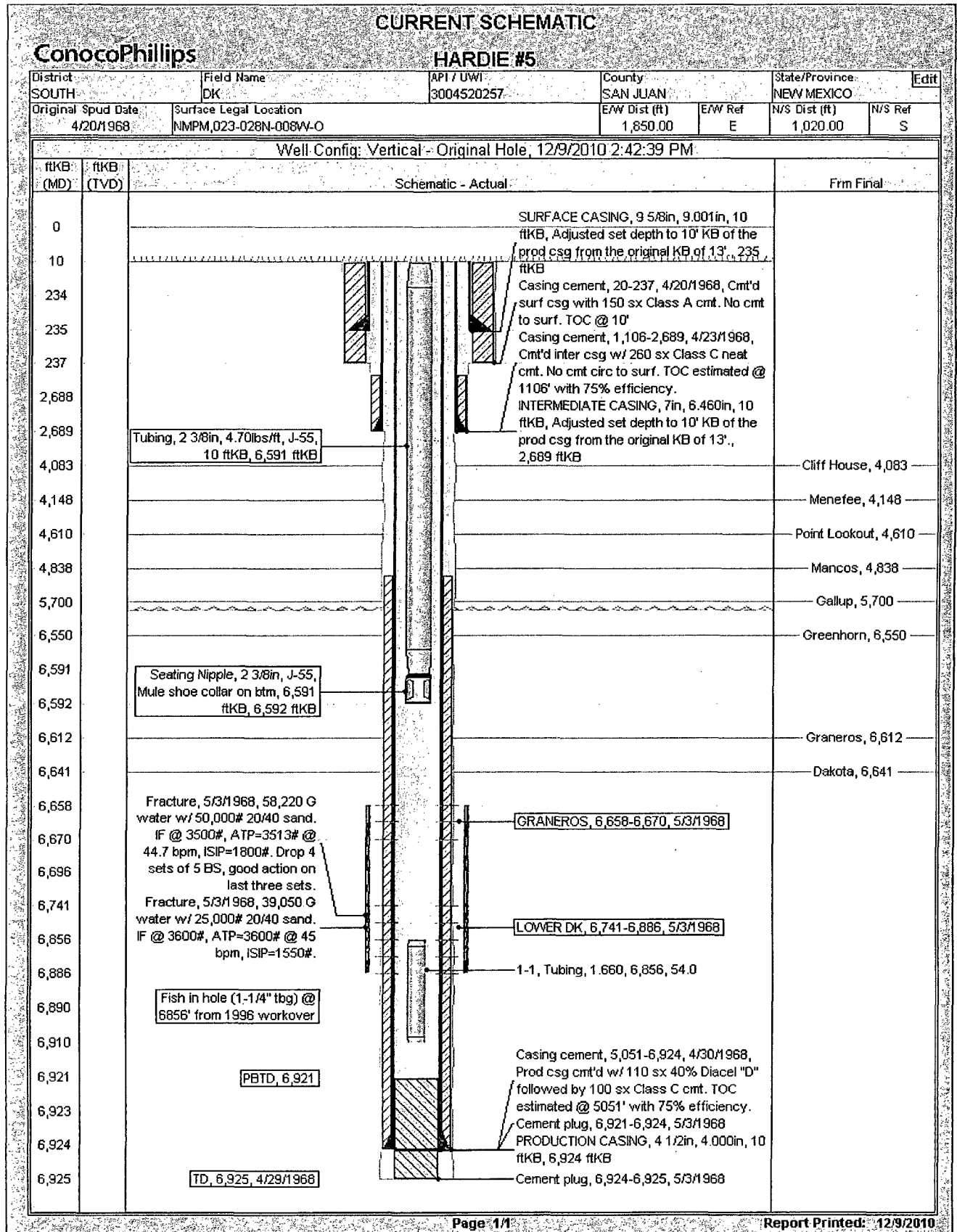
Mesaverde Recompletion Sundry

12/09/2010

Procedure:

1. MIRU service rig. TOOH with current production tubing string (2-3/8" installed 1996).
2. Wireline set a 4-1/2" composite bridge plug in the casing above the existing Dakota perforations.
3. Run a GR/CBL/CCL/CNL correlation log under 1000 psi. Pressure test casing. RDMO.
4. Perforate the first stage Mesaverde (Point Look out & Lower Menefee).
5. Fracture stimulate first stage Mesaverde.
6. RIH and set a composite frac plug above the first stage Mesaverde.
7. Perforate the second stage Mesaverde (Upper Menefee & Cliffhouse).
8. Fracture stimulate the second stage Mesaverde.
9. Flow back fracs on clean-up into steel pit. RIH and wireline set a composite bridge plug 50ft above top Cliffhouse perf.
10. TIH with a mill and drill out top two composite plugs. Clean out to bottom composite above Dakota.
11. Flow test Mesaverde up casing.
12. TIH with a mill and drill out bottom composite plug and cleanout to PBTD (1-1/2" tbg fish left in hole from 1996 workover). TOOH.
13. TIH and land production tubing. Get a commingled Dakota / Mesaverde flow rate.
14. Release service rig and turn well over to production.

Wellbore Diagram



District I

1625 N. French Dr., Hobbs, NM 88240
Phone:(505) 393-6161 Fax:(505) 393-0720

District II

1301 W. Grand Ave., Artesia, NM 88210
Phone:(505) 748-1283 Fax:(505) 748-9720

District III

1000 Rio Brazos Rd., Aztec, NM 87410
Phone:(505) 334-6178 Fax:(505) 334-6170

District IV

1220 S. St Francis Dr., Santa Fe, NM 87505
Phone:(505) 476-3470 Fax:(505) 476-3462

State of New Mexico
Energy, Minerals and Natural Resources

Oil Conservation Division

1220 S. St Francis Dr.
Santa Fe, NM 87505

Form C-102
Permit 124873

WELL LOCATION AND ACREAGE DEDICATION PLAT

1. API Number 30-045-20257	2. Pool Code 72319	3. Pool Name BLANCO-MESAVERDE (PRORATED GAS)
4. Property Code 31728	5. Property Name HARDIE	6. Well No. 005
7. OGRID No. 217817	8. Operator Name CONOCOPHILLIPS COMPANY	9. Elevation 5889

10. Surface Location

UL - Lot	Section	Township	Range	Lot Idn	Feet From	N/S Line	Feet From	E/W Line	County
O	23	28N	08W		1020	S	1850	E	SAN JUAN

11. Bottom Hole Location If Different From Surface

UL - Lot	Section	Township	Range	Lot Idn	Feet From	N/S Line	Feet From	E/W Line	County
12. Dedicated Acres 320.00 (E/2)		13. Joint or Infill		14. Consolidation Code		15. Order No.			

NO ALLOWABLE WILL BE ASSIGNED TO THIS COMPLETION UNTIL ALL INTERESTS HAVE BEEN CONSOLIDATED OR A NON-STANDARD UNIT HAS BEEN APPROVED BY THE DIVISION

	<p align="center">OPERATOR CERTIFICATION</p> <p><i>I hereby certify that the information contained herein is true and complete to the best of my knowledge and belief, and that this organization either owns a working interest or unleased mineral interest in the land including the proposed bottom hole location(s) or has a right to drill this well at this location pursuant to a contract with an owner of such a mineral or working interest, or to a voluntary pooling agreement or a compulsory pooling order heretofore entered by the division.</i></p> <p align="right"><i>Crystal Tafoya 12/22/10</i></p> <p>E-Signed By: Crystal Tafoya Title: Staff Regulatory Tech Date: December 22, 2010</p> <hr/> <p align="center">SURVEYOR CERTIFICATION</p> <p><i>I hereby certify that the well location shown on this plat was plotted from field notes of actual surveys made by me or under my supervision, and that the same is true and correct to the best of my belief.</i></p> <p>Surveyed By: R.L. Potet Date of Survey: 3/12/1968 Certificate Number: 3084</p>
--	--