

**UNITED STATES
DEPARTMENT OF THE INTERIOR
BUREAU OF LAND MANAGEMENT**

RECEIVED
AMENDED

MAR 23 2011

Sundry Notices and Reports on Wells

1. Type of Well
GAS

2. Name of Operator

BURLINGTON

RESOURCES OIL & GAS COMPANY LP

3. Address & Phone No. of Operator

PO Box 4289, Farmington, NM 87499 (505) 326-9700

4. Location of Well, Footage, Sec., T, R, M

Unit M (SWSW), 930' FSL & 1190' FWL, Section 12, T29N, R10W, NMPM

Farmington Field Office
Bureau of Land Management

5. Lease Number

SF-077092

6. If Indian, All. or
Tribe Name

7. Unit Agreement Name

8. Well Name & Number
Houck 2

9. API Well No.

30-045-08464

10. Field and Pool
Blanco MV / Basin DK11. County and State
San Juan, NM**12. CHECK APPROPRIATE BOX TO INDICATE NATURE OF NOTICE, REPORT, OTHER DATA****Type of Submission**☒ Notice of Intent☐ Subsequent Report☐ Final Abandonment**Type of Action**☐ Abandonment☒ Recompletion☐ Plugging☐ Casing Repair☐ Altering Casing☐ Change of Plans☐ New Construction☐ Non-Routine Fracturing☐ Water Shut off☐ Conversion to Injection☐ Other -**13. Describe Proposed or Completed Operations**

Burlington Resources requests permission to recompleate the Mesaverde formation for the subject well per the amended attached procedure, current wellbore schematic and C102. The DHC will be submitted as soon as possible.

The procedure has been amended to include TOC information.

14. I hereby certify that the foregoing is true and correct.

Signed

Crystal Tafoya

Crystal Tafoya

Title: Staff Regulatory Technician

Date 3/23/11

(This space for Federal or State Office use)

APPROVED BY Original Signed: Stephen Mason Title

Date MAR 24 2011

CONDITION OF APPROVAL, if any:

Title 18 U.S.C. Section 1001, makes it a crime for any person knowingly and willfully to make any department or agency of the United States any false, fictitious or fraudulent statements or representations as to any matter within its jurisdiction.

NMOCD

Houck #2

Unit M, Section 12, Township 29N, Range 10W

API# 3004508464

Mesaverde Recompletion Sundry

4/28/2009

Revised 3/21/2011

Procedure:

1. MIRU service rig. TOOH with current production tubing string.
2. Wireline set a 4-1/2" composite bridge plug in the casing above the existing Dakota perforations.
3. Run a GR/CCL/CBL correlation log under 1000 psi. Pressure test casing. The CBL will be used to determine an accurate TOC while the GR will be used to call formation tops. This information will be used to determine the need for any remedial cement work. *Review with Agencies before Pelt*
4. Perforate the first stage Mesaverde (Point Look out & Lower Menefee).
5. Fracture stimulate first stage Mesaverde.
6. RIH and set a composite frac plug above the first stage Mesaverde.
7. Perforate the second stage Mesaverde (Upper Menefee & Cliffhouse).
8. Fracture stimulate the second stage Mesaverde.
9. Flow back frags on clean-up into steel pit. RIH and wireline set a composite bridge plug 50ft above top Lewis or Cliffhouse perf.
10. TIH with a mill and drill out top three composite plugs. Clean out to bottom composite plug below entire Mesaverde.
11. Flow test Mesaverde up casing.
12. TIH with a mill and drill out bottom composite plug and cleanout to PBTD. TOOH.
13. TIH and land production tubing. Get a commingled Dakota / Mesaverde flowrate.
14. Release service rig and turn well over to production.

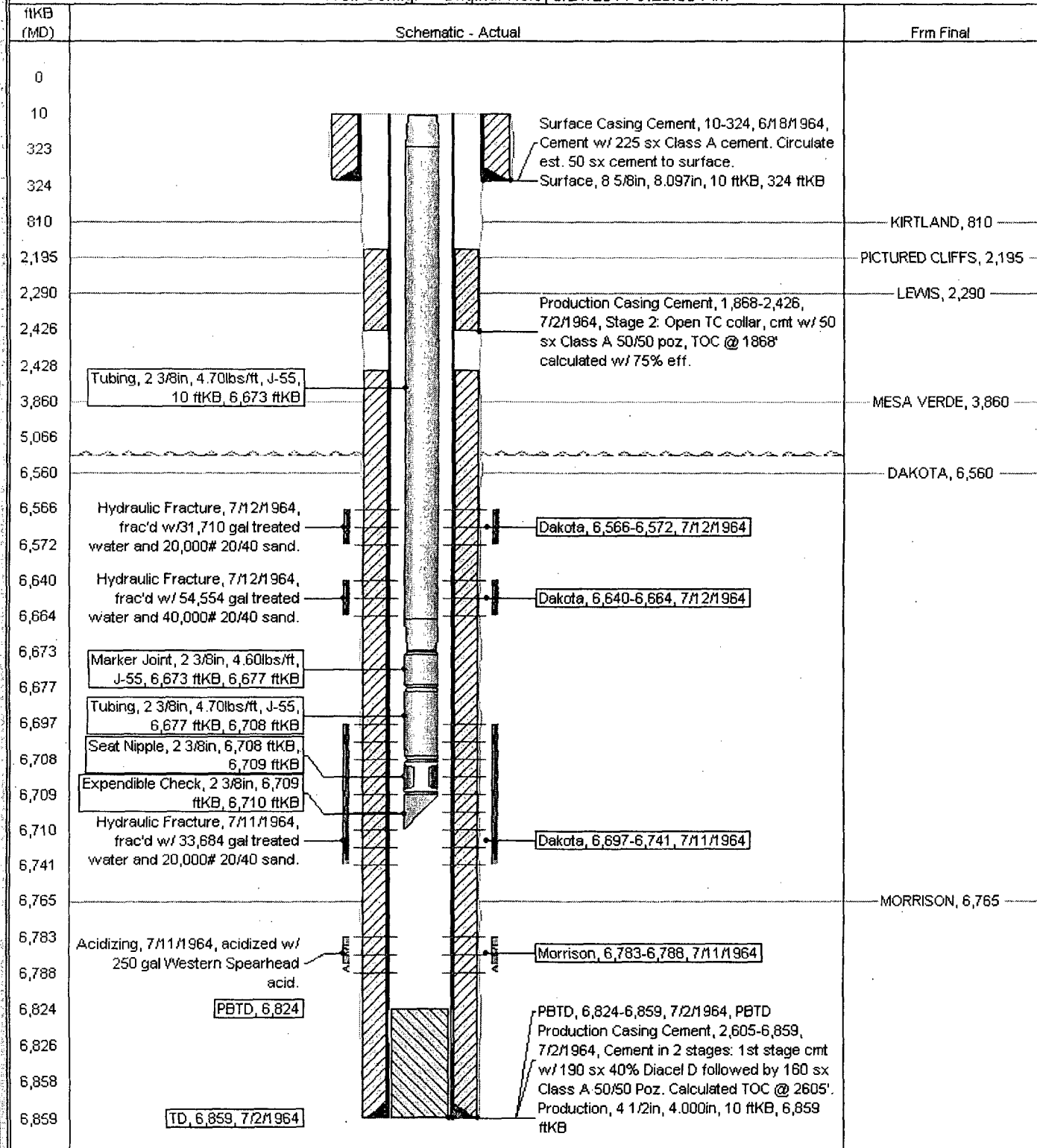
Current Schematic

ConocoPhillips

Well Name: HOUCK #2 (BR)

| | | | | | | |
|-----------------------|-------------------------------|--------------------------|--------------------------------|--------------------------------|-------------------------|------|
| API / UWI | State Legal Location | Field Name | License No. | State / Province | Well Configuration Type | Edit |
| 3004508464 | NMPM,012-029N-010W-M | SAN JUAN (PROBATED GAS) | | NEW MEXICO | | |
| Ground Elevation (ft) | Original KB/RT Elevation (ft) | KB-Crowned Distance (ft) | KB-Casing Flange Distance (ft) | KB-Tubing Hanger Distance (ft) | | |
| 5,780.00 | 5,790.00 | 10.00 | 5,790.00 | 5,790.00 | | |

Well Config: - Original Hole, 3/21/2011 9:25:35 AM



District I

1625 N. French Dr., Hobbs, NM 88240
Phone: (505) 393-6161 Fax: (505) 393-0720

District II

1301 W. Grand Ave., Artesia, NM 88210
Phone: (505) 748-1283 Fax: (505) 748-9720

District III

1000 Rio Brazos Rd., Aztec, NM 87410
Phone: (505) 334-6178 Fax: (505) 334-6170

District IV

1220 S. St Francis Dr., Santa Fe, NM 87505
Phone: (505) 476-3470 Fax: (505) 476-3462

State of New Mexico
Energy, Minerals and Natural Resources

Oil Conservation Division**1220 S. St Francis Dr.****Santa Fe, NM 87505**

Form C-102
Permit 126078

WELL LOCATION AND ACREAGE DEDICATION PLAT

| | | |
|--------------------------------------|---|---|
| 1. API Number 30-045-08464 | 2. Pool Code 72319 | 3. Pool Name BLANCO-MESAVERDE (PRORATED GAS) |
| 4. Property Code 7116 | 5. Property Name HOUCK | 6. Well No. 002 |
| 7. OGRID No. 14538 | 8. Operator Name BURLINGTON RESOURCES OIL & GAS COMPANY LP | 9. Elevation 5779 |

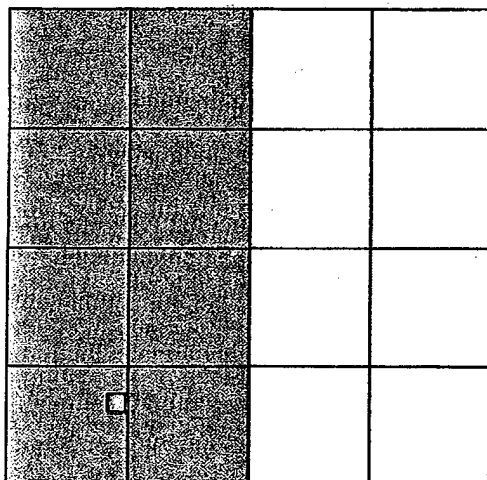
10. Surface Location

| UL - Lot | Section | Township | Range | Lot Idn | Feet From | N/S Line | Feet From | E/W Line | County |
|----------|---------|----------|-------|---------|-----------|----------|-----------|----------|----------|
| M | 12 | 29N | 10W | 13 | 930 | S | 1190 | W | SAN JUAN |

11. Bottom Hole Location If Different From Surface

| UL - Lot | Section | Township | Range | Lot Idn | Feet From | N/S Line | Feet From | E/W Line | County |
|-------------------------------------|---------|---------------------|-------|------------------------|-----------|---------------|-----------|----------|--------|
| 12. Dedicated Acres 315.56 (W/2) | | 13. Joint or Infill | | 14. Consolidation Code | | 15. Order No. | | | |

NO ALLOWABLE WILL BE ASSIGNED TO THIS COMPLETION UNTIL ALL INTERESTS HAVE BEEN CONSOLIDATED OR A NON-STANDARD UNIT HAS BEEN APPROVED BY THE DIVISION

**OPERATOR CERTIFICATION**

I hereby certify that the information contained herein is true and complete to the best of my knowledge and belief, and that this organization either owns a working interest or unleased mineral interest in the land including the proposed bottom hole location(s) or has a right to drill this well at this location pursuant to a contract with an owner of such a mineral or working interest, or to a voluntary pooling agreement or a compulsory pooling order heretofore entered by the division.

Crystal Tafoya 1/20/2011
E-Signed By: **Crystal Tafoya**
Title: **Staff Regulatory Technician**
Date: **January 20, 2011**

SURVEYOR CERTIFICATION

I hereby certify that the well location shown on this plat was plotted from field notes of actual surveys made by me or under my supervision, and that the same is true and correct to the best of my belief.

Surveyed By: **James P. Leese**
Date of Survey: **6/3/1964**
Certificate Number: **1463**