

**APD'S**  
**FOR NM SURFACE/ CO BOTTOM HOLE**  
**ATTACHED ORDER IN WELL FILE:**

**\*FORM 1\***

**C-101 STATE OF NEW MEXICO**  
**APPLICATION FOR PERMIT TO DRILL**  
**(SURFACE LOCATION- PRIVATE)**

**FORM 2**

**STATE OF COLORADO**  
**APPLICATION FOR PERMIT TO DRILL**  
**(BOTTOM HOLE LOCATION)**

**API # 05-007-06305**

**FORM 3**

**BLM**  
**APPLICATION FOR PERMIT TO DRILL**  
**(BOTTOM HOLE LOCATION)**

District I  
1625 N. French Dr., Hobbs, NM 88240  
District II  
1301 W. Grand Avenue, Artesia, NM 88210  
District III  
1000 Rio Brazos Road, Aztec, NM 87410  
District IV  
1220 S. St. Francis Dr., Santa Fe, NM 87505

State of New Mexico  
Energy Minerals and Natural Resources

Oil Conservation Division  
1220 South St. Francis Dr.  
Santa Fe, NM 87505

Form C-101  
June 16, 2008

Submit to appropriate District Office

☐ AMENDED REPORT

**APPLICATION FOR PERMIT TO DRILL, RE-ENTER, DEEPEN, PLUGBACK, OR ADD A ZONE**

<sup>1</sup> Operator Name and Address Red Willow Production Co. PO Box 369 Ignacio, CO 81137		<sup>2</sup> OGRID Number 216282
<sup>3</sup> Property Code 38469	<sup>4</sup> Property Name NC Ute 23D	<sup>5</sup> API Number 30 - 0391-31020
<sup>9</sup> Proposed Pool 1 Colorado		<sup>10</sup> Proposed Pool 2 RCVD OCT 28 '10 OIL CONS. DIV. DIST. 3

7 Surface Location									
UL or lot no.	Section 9	Township 32N	Range 4W	Lot Idn 5	Feet from the 1807	North/South line South	Feet from the 454	East/West line East	County Rio Arriba
1									

8 Proposed Bottom Hole Location If Different From Surface									
UL or lot no.	Section 23	Township 32N	Range 4W	Lot Idn NA	Feet from the 760	North/South line North	Feet from the 760	East/West line East	County Archuleta, CO
NA	Colorado								

Additional Well Information				
<sup>11</sup> Work Type Code N	<sup>12</sup> Well Type Code G	<sup>13</sup> Cable/Rotary R	<sup>14</sup> Lease Type Code Tribal	<sup>15</sup> Ground Level Elevation 6190'
<sup>16</sup> Multiple No	<sup>17</sup> Proposed Depth 6309' MD	<sup>18</sup> Formation Fruitland Coal	<sup>19</sup> Contractor Unknown	<sup>20</sup> Spud Date December 10, 2010

21 Proposed Casing and Cement Program					
Hole Size	Casing Size	Casing weight/foot	Setting Depth	Sacks of Cement	Estimated TOC
15"	13 3/8"	48	100	50	Surface
12 1/4"	9 5/8"	32.3	800	425	Surface
8 3/4"	7"	23	3579' MD	402, 150	Surface
6 1/4"	4 1/2" Liner	11.6	6309' MD	None	NA

<sup>22</sup> Describe the proposed program. If this application is to DEEPEN or PLUG BACK, give the data on the present productive zone and proposed new productive zone. Describe the blowout prevention program, if any. Use additional sheets if necessary. *SEE BLM APD (a Hacked)*

Although the surface location for this well is in New Mexico, all production will occur on a tribal lease in Colorado. See attached copy of BLM APD submitted to Durango Field Office. See attached copy of APD submitted to the Colorado Oil and Gas Conservation Commission. Per Charlie Perin, the OCD will assign the API Number for this well.

<sup>23</sup> I hereby certify that the information given above is true and complete to the best of my knowledge and belief.

Signature: <i>Tim G. Kelley</i>	OIL CONSERVATION DIVISION	
Printed name: Tim G. Kelley	Approved by: <i>Charlie Perin</i>	4-5-2011
Title: Agent	Title: <b>SUPERVISOR DISTRICT # 3</b>	
E-mail Address: tim@finneyland.com	Approval Date: <b>APR 11 2011</b>	Expiration Date: <b>APR 11 2012</b>
Date: 10.12.10	Phone: 970.385.4722	Conditions of Approval Attached <input type="checkbox"/>

Please include both - NMICO API #'s on all Future Forms Submitted. *APR 11 2012*

DISTRICT I  
1625 N. French Dr., Hobbs, N.M. 88240

State of New Mexico  
Energy, Minerals & Natural Resources Department

Form C-102  
Revised October 12, 2005

DISTRICT II  
1301 W. Grand Avenue, Artesia, N.M. 88210

DISTRICT III  
1000 Rio Brazos Rd., Aztec, N.M. 87410

OIL CONSERVATION DIVISION  
1220 South St. Francis Dr.  
Santa Fe, NM 87505

Submit to Appropriate District Office  
State Lease - 4 Copies  
Fee Lease - 3 Copies

DISTRICT IV  
1220 S. St. Francis Dr., Santa Fe, NM 87505

☐ AMENDED REPORT

WELL LOCATION AND ACREAGE DEDICATION PLAT

<sup>1</sup> API Number 30.039-31020	<sup>2</sup> Pool Code 71629	<sup>3</sup> Pool Name BASIN-FRUITLAND COAL Colorado
<sup>4</sup> Property Code 38469	<sup>5</sup> Property Name NC UTE 23D	<sup>6</sup> Well Number 2H
<sup>7</sup> OGRID No. 216282	<sup>8</sup> Operator Name RED WILLOW PRODUCTION COMPANY	<sup>9</sup> Elevation 6193'

<sup>10</sup> Surface Location

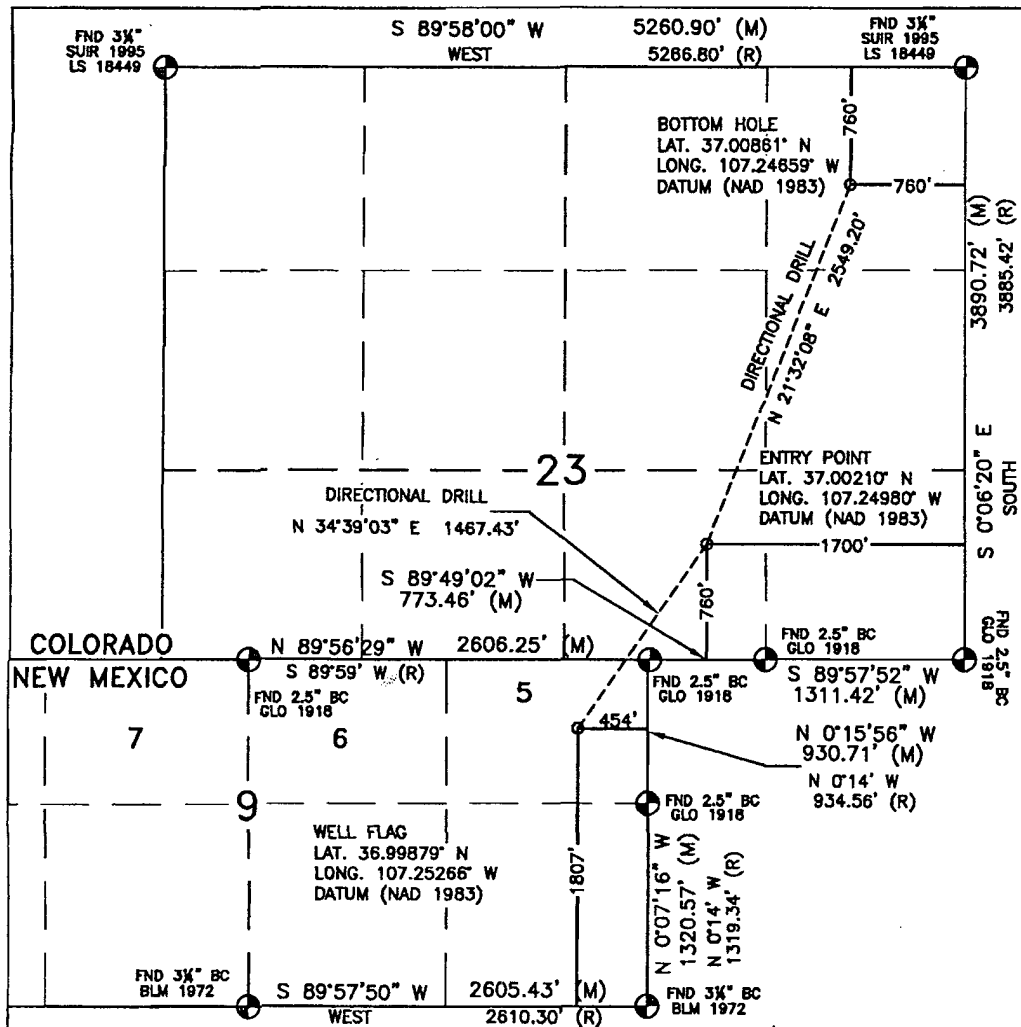
UL or lot no.	Section	Township	Range	Lot Idn	Feet from the	North/South line	Feet from the	East/West line	County
1	9	32N	4W	5	1807'	SOUTH	454'	EAST	RIO ARRIBA

<sup>11</sup> Bottom Hole Location If Different From Surface

UL or lot no.	Section	Township	Range	Lot Idn	Feet from the	North/South line	Feet from the	East/West line	County
A	23	32N	4W		760'	NORTH	760'	EAST	ARCHULTA, COLORADO
<sup>12</sup> Dedicated Acres			<sup>13</sup> Joint or Infill		<sup>14</sup> Consolidation Code		<sup>15</sup> Order No. OIL CONS. DIV.		

NO ALLOWABLE WILL BE ASSIGNED TO THIS COMPLETION UNTIL ALL INTERESTS HAVE BEEN CONSOLIDATED  
OR A NON-STANDARD UNIT HAS BEEN APPROVED BY THE DIVISION DIST. 3

18



17 OPERATOR CERTIFICATION

I hereby certify that the information contained herein is true and complete to the best of my knowledge and belief, and that this organization either owns a working interest or unleased mineral interest in the land including the proposed bottom hole location or has a right to drill this well at this location pursuant to a contract with an owner or a compulsory pooling order heretofore entered by the division.

Signature: *Tim G. Kelley* Date: 11-2-10  
Printed Name: Tim G. Kelley

18 SURVEYOR CERTIFICATION

I hereby certify that the well location shown on this plat was plotted from field notes of actual surveys made by me or under my supervision, and that the same is true and correct to the best of my belief.

AUGUST 20, 2009

Date of Survey  
Signature and Seal of Professional Surveyor:

DAVID R. RUSSELL  
REGISTERED PROFESSIONAL LAND SURVEYOR  
10201  
Certificate Number 10201

# Typical BOP Configuration for Gas Drilling

