

RECEIVED

MAY 03 2011

Farmington Field Office  
Bureau of Land Management

submitted in lieu of Form 3160-5

UNITED STATES  
DEPARTMENT OF THE INTERIOR  
BUREAU OF LAND MANAGEMENT

## Sundry Notices and Reports on Wells

1. Type of Well  
GAS

2. Name of Operator

**BURLINGTON**

RESOURCES OIL &amp; GAS COMPANY LP

3. Address &amp; Phone No. of Operator

PO Box 4289, Farmington, NM 87499 (505) 326-9700

4. Location of Well, Footage, Sec., T, R, M

Unit D (NWNW), 790' FNL &amp; 790' FWL, Section 9, T27N, R11W, NMPM

5. Lease Number  
SF-078872-A
6. If Indian, All. or  
Tribe Name
7. Unit Agreement Name
8. Well Name & Number  
Frontier B 2
9. API Well No.  
30-045-06750
10. Field and Pool  
Kutz Gallup/Basin DK
11. County and State  
San Juan, NM

## 12. CHECK APPROPRIATE BOX TO INDICATE NATURE OF NOTICE, REPORT, OTHER DATA

## Type of Submission

☒ Notice of Intent☐ Subsequent Report☐ Final Abandonment

## Type of Action

☒ Abandonment☐ Recompletion☐ Plugging☐ Casing Repair☐ Altering Casing☐ Change of Plans☐ New Construction☐ Non-Routine Fracturing☐ Water Shut off☐ Conversion to Injection☐ Other --

## 13. Describe Proposed or Completed Operations

Burlington Resources requests permission to P&amp;A the subject well per the revised P&amp;A procedure. The original NOI was filed 3/2/11 and approved. The revised procedure, current and proposed wellbore schematic are attached.

Notify NMOC D 24 hrs  
prior to beginning  
operations

## 14. I hereby certify that the foregoing is true and correct.

Signed Crystal Tafoya Crystal Tafoya

Title: Staff Regulatory Technician

Date 3/2/11

(This space for Federal or State Office use)

APPROVED BY Original Signed: Stephen Mason TitleDate MAY 03 2011

CONDITION OF APPROVAL, if any:

Title 18 U.S.C. Section 1001, makes it a crime for any person knowingly and willfully to make any department or agency of the United States any false, fictitious or fraudulent statements or representations as to any matter within its jurisdiction.

NMOC D



## Expense – P&A

February 16, 2011

### Frontier B 2 (GP/DK)

Kutz Gallup/Basin Dakota  
790' FNL and 790' FWL, Unit D Section 9, T27N, R11W  
San Juan County, New Mexico / API 30-045-06750  
Lat: 36° 35' 41.064" N/ Long: 108° 0' 53.568" W

Note: All cement volumes use 100% excess outside pipe and 50' excess inside. The stabilizing wellbore fluid will be 8.3 ppg, sufficient to balance all exposed formation pressures. All cement will be Class B, mixed at 15.6 ppg with a 1.18 cf/sx yield.

1. This project requires a NMOCD C-144 CLEZ Closed-Loop System Permit for the use of an A-Plus steel tank to handle waste fluids circulated from the well and cement wash up.
2. Install and test location rig anchors. Comply with all NMOCD, BLM, and Operator safety regulations. MOL and RU daylight pulling unit. Conduct safety meeting for all personnel on location. Record casing, tubing and bradenhead pressures. NU relief line and blow down well. Kill well with water as necessary and at least pump tubing capacity of water down the tubing. ND wellhead and NU BOP. Function test BOP.
3. Rods: Yes ☐, No ☒, Unknown ☐.  
Tubing: Yes ☒, No ☐, Unknown ☐ Size 2-3/8 (dual), Length 5887' and 6447'.  
Packer: Yes ☒, No ☐, Unknown ☐ Type Baker Model D @ 6441'.  
If this well has rods or a packer, then modify the work sequence in step #2 as appropriate.
4. PU on Gallup tubing at 5887' and release tubing anchor. TOH and LD Gallup tubing with tubing anchor. PU on Dakota tubing and sting out of packer. Sting into packer and pressure test tubing to 1000 PSI. Sting out of packer.
5. **Plug #1 (Dakota Perforations: 6441' – 6341')**: With packer at 6441' mix 29 sxs of Class B cement and spot above packer to cover Dakota interval. TOH and LD tubing.
6. **Plug #2 (Gallup Perforations and Top: 5804' – 5463')**: RIH and set 7" CIBP at 5804". Pressure test casing to 800#. *If casing does not test, then spot or tag subsequent plugs as appropriate.* Mix 74 sxs Class B cement and spot above CIBP at 5804' to cover Gallup perforation and top. TOH and LD tubing.
7. **Plug #3 (Mancos Tops: 4547' – 4697')**: Perforate 3 holes at 4697'. Establish rate into squeeze holes. RIH and set 7" CR at 4647. Mix 55 sxs Class B, squeeze 26 sxs behind casing and leave 29 sxs inside casing to isolate Fruitland tops. TOH and LD tubing
8. **Plug #4 (Mesaverde Top: 2906' - 2806')**: Perforate 3 holes at 2906'. Establish rate into squeeze holes. RIH and set 7" CR at 2856'. Mix 55 sxs Class B cement, squeeze 26 sxs behind casing and leave 29 sxs inside casing to isolate Mesaverde top. TOH and LD tubing.
9. **Plug #5 (Pictured Cliffs Tops: 1955' – 1855')**: RIH and set 7" CR at 1905. Mix 29 sxs Class B to isolate Pictured Cliffs tops. TOH and LD tubing.

10. **Plug #6 (Fruitland Tops: 1656' – 1656')**: Perforate 3 holes at 1656'. Establish rate into squeeze holes. RIH and set 7" CR at 1656. Mix 47sxs Class B, squeeze 18 sxs behind casing and leave 29 sxs inside casing to isolate Fruitland tops. TOH and LD tubing.
11. **Plug #7 (Kirtland and Ojo Alamo Tops: 948' – 779')**: Perforate 3 holes at 948'. Establish rate into squeeze holes. RIH and set 7" CR at 898'. Mix 86 sxs Class B cement, squeeze 44 sxs behind casing and leave 42 sxs inside casing to cover Kirtland and Ojo Alamo top. TOH and LD tubing.
12. **Plug #8 (10-3/4" casing shoe to surface: 242' – surface)**: Perforate 3 squeeze holes at 242'. Establish circulation out bradenhead with water and circulate the BH annulus clean. Mix 108 sxs Class B cement, squeeze 62 sxs behind casing and leave 46 sxs inside casing. POH.
10. ND BOP and cut off wellhead below surface casing flange. Install P&A marker with cement to comply with regulations. RD, MOL and cut off anchors. Restore location per BLM stipulations.

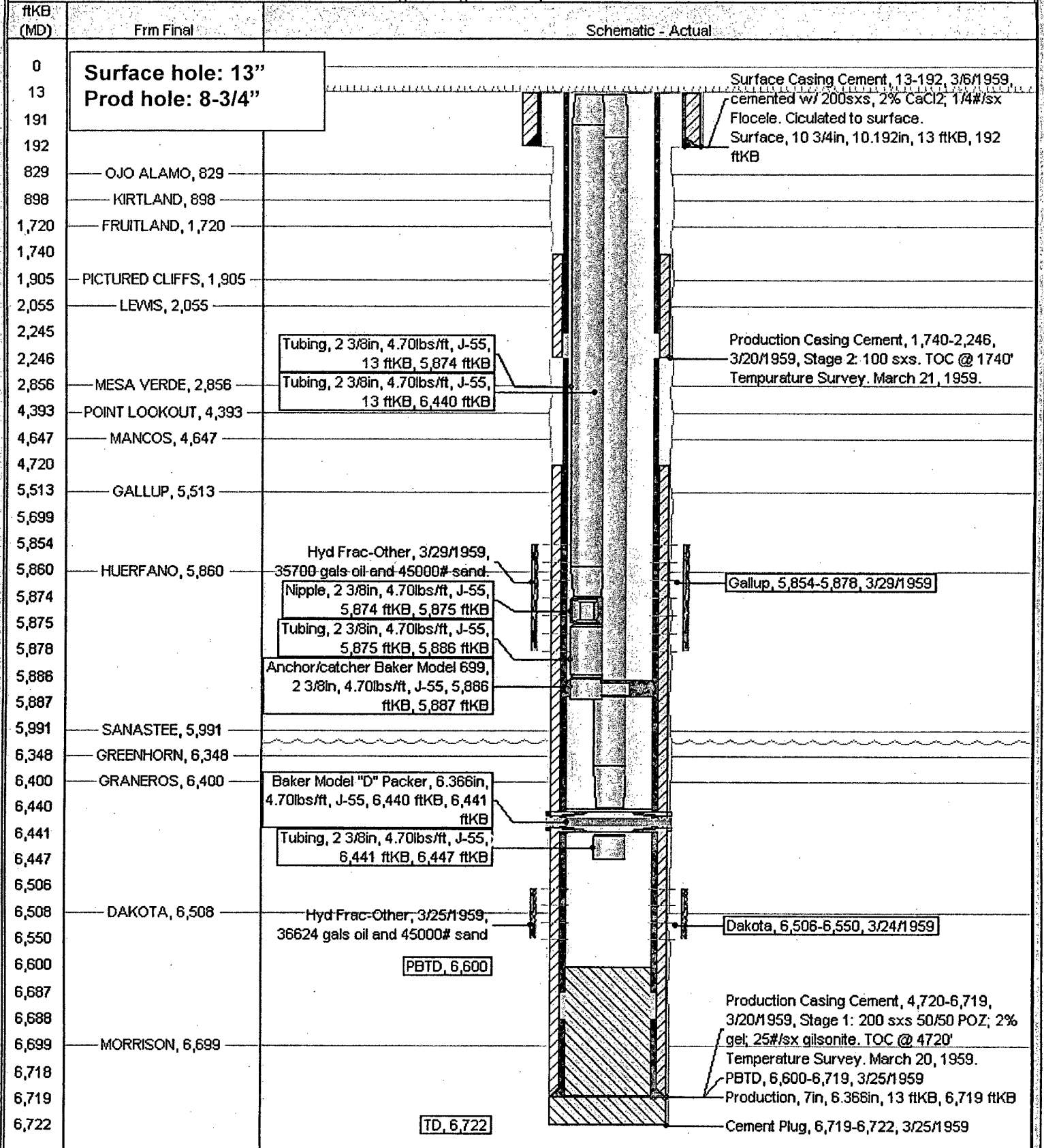
# Current Schematic

ConocoPhillips

Well Name: FRONTIER B #2

API/UWI 3004506750	Surface Legal Location NMPM,009-027N-011W	Field Name BASIN DANG (A) (DETERMINED GAS)	License No.	State/Province NEW MEXICO	Well Configuration Type Edit
Ground Elevation (ft) 6,160.00	Original KB/RT Elevation (ft) 6,172.00	KB-Gravel Distance (ft) 12.00	KB-Casing Flange Distance (ft)	KB-Tubing Hanger Distance (ft)	

Well Config: - Original Hole, 2/17/2011 8:27:35 AM



# Proposed Schematic

ConocoPhillips

Well Name: FRONTIER B #2

API/UWI 3004506750	Surface Legal Location NMPM,009-027N-011W	Field Name BASIN ANDO F.A. (PROPOSED CASE)	License No.	State/Province NEW MEXICO	Well Configuration Type Edit
Ground Elevation (ft) 6,160.00	Original KB/RT Elevation (ft) 6,172.00	KB-Grout Distance (ft) 12.00	KB-Casing Flange Distance (ft)	KB-Tubing Hanger Distance (ft)	

## Well Config: - Original Hole, 1/1/2020

ftKB (MD)	Schematic - Actual	Frm Final
13		
192	Surface Casing Cement, 13-192, 3/6" 1959, cemented w/ 200sxs, 2% CaCl <sub>2</sub> , 1/4#/sx Floccle. Circulated to surface.	
779	Surface, 10 3/4in, 10.192in, 13 ftKB, 192 ftKB	
896	Perforated, 242, 1/1/2020	OJO ALAMO, 829
948	Plug #8 Squeeze, 13-242, 1/1/2020	
1,718	Plug #8, 13-242, 1/1/2020, 108 sxs Class B cmnt: 62 sxs behind the casing and 46 inside the casing	KIRTLAND, 898
1,735	Cement Retainer, 896-898	
1,770	Perforated, 948, 1/1/2020	FRUITLAND, 1,720
1,903	Plug #7 Squeeze, 779-948, 1/1/2020	
1,955	Plug #7, 779-948, 1/1/2020, 86 sxs Class B cmnt: 44 sxs behind the casing and 42 inside the casing	
2,245	Cement Retainer, 1,718-1,720	PICTURED CLIFFS, 1,905
2,806	Perforated, 1,735, 1/1/2020	
2,856	Plug #6, 1,670-1,770, 1/1/2020, 47 sxs Class B cmnt: 18 sxs behind the casing and 29 inside the casing	LEWIS, 2,055
4,393	Plug #6 Squeeze, 1,670-1,770, 1/1/2020	
4,645	Cement Retainer, 1,903-1,905	
4,697	Plug #5, 1,855-1,955, 1/1/2020, 29 sxs Class B cmnt	MESA VERDE, 2,856
5,463	Production Casing Cement, 1,740-2,246, 3/20/1959, Stage 2: 100 sxs. TOC @ 1740'	POINT LOOKOUT, 4,393
5,699	Temperature Survey, March 21, 1959	
5,804	Cement Retainer, 2,854-2,856	MANCOS, 4,647
5,860	Perforated, 2,906, 1/1/2020	
5,875	Plug #4 Squeeze, 2,806-2,906, 1/1/2020	
5,886	Plug #4, 2,806-2,906, 1/1/2020, 55 sxs Class B cmnt: 26 sxs behind the casing and 29 sxs inside the casing	GALLUP, 5,513
5,991	Cement Retainer, 4,645-4,647	
6,348	Perforated, 4,697, 1/1/2020	
6,440	Plug #3 Squeeze, 4,547-4,697, 1/1/2020	HUERFANO, 5,860
6,447	Plug #3, 4,547-4,697, 1/1/2020, 55 sxs Class B cmnt: 26 sxs behind the casing and 29 inside the casing	
6,508	Bridge Plug - Permanent, 5,802-5,804	
6,600	Plug #2, 5,463-5,804, 1/1/2020, 74 sxs Class B cmnt	SANASTEE, 5,991
6,688	Gallup, 5,854-5,878, 3/29/1959	
6,718	Packer, 6,440-6,441	GREENHORN, 6,348
6,722	Plug #1, 6,341-6,441, 1/1/2020, 29 sxs Class B cmnt	GRANEROS, 6,400
	Dakota, 6,506-6,550, 3/24/1959	DAKOTA, 6,508
	Production Casing Cement, 4,720-6,719, 3/20/1959, Stage 1: 200 sxs 50/50 POZ; 2% gel; 25#/sx gilsonite. TOC @ 4720'	
	Temperature Survey, March 20, 1959	
	PBTD, 6,600-6,719, 3/25/1959	MORRISON, 6,699
	Production, 7in, 6.366in, 13 ftKB, 6,719 ftKB	
	Cement Plug, 6,719-6,722, 3/25/1959	