

UNITED STATES
DEPARTMENT OF THE INTERIOR
BUREAU OF LAND MANAGEMENT

RECEIVED

APPLICATION FOR PERMIT TO DRILL, DEEPEN, OR PLUG BACK

1a. Type of Work DRILL	5. Lease Number SF-079394	Unit Reporting Number MV-8910010510 DK-891001051B
1b. Type of Well GAS	6. If Indian, All. or Tribe	Farmington, NM
2. Operator BURLINGTON RESOURCES Oil & Gas Company	7. Unit/Agreement Name San Juan 27-5 Unit	
3. Address & Phone No. of Operator PO Box 4289, Farmington, NM 87499 (505) 326-9700	8. Farm or Lease Name San Juan 27-5 Unit	9. Well Number #169M
4. Location of Well 1690' FSL, 2065' FWL Latitude 36° 31.6928'N, Longitude 107° 21.9180'W	10. Field, Pool, Wildcat Blanco Mesaverde/Basin Dakota	11. Sec., Twn, Rge, Mer. (NMPM) K Sec. 33, T27N, R05W API # 30-039- 27638
14. Distance in Miles from Nearest Town 43.3 miles to Blanco Post Office	12. County Rio Arriba	13. State NM
15. Distance from Proposed Location to Nearest Property or Lease Line 1690'		
16. Acres in Lease	17. Acres Assigned to Well 320 W/2 - MV 320 S/2 - DK	
18. Distance from Proposed Location to Nearest Well, Drig, Compl, or Applied for on this Lease 1210'		
19. Proposed Depth 7640'	20. Rotary or Cable Tools Rotary	
21. Elevations (DF, FT, GR, Etc.) 6506' GR	22. Approx. Date Work will Start	
23. Proposed Casing and Cementing Program See Operations Plan attached		
24. Authorized by: <u>Joni Clark</u> Regulatory Specialist	Date <u>2/25/04</u>	

PERMIT NO. _____ APPROVAL DATE _____
APPROVED BY WAYNE TOWNSEND TITLE Acting AFM DATE 3/9/04

Archaeological Report attached

Threatened and Endangered Species Report attached

NOTE: This format is issued in lieu of U.S. BLM Form 3160-3

Title 18 U.S.C. Section 1001, makes it a crime for any person knowingly and willfully to make to any department or agency of the United States any false, fictitious or fraudulent statements or presentations as to any matter within its jurisdiction.

DISTRICT II
611 South First, Artesia, N.M. 88210DISTRICT III
1000 Rio Brazos Rd., Artesia, N.M. 87410DISTRICT IV
2040 South Pacheco, Santa Fe, NM 87505OIL CONSERVATION DIVISION
2040 South Pacheco
Santa Fe, NM 87505Submit to Appropriate District Office
State Lease - 4 Copies
Fee Lease - 3 Copies☐ AMENDED REPORT

WELL LOCATION AND ACREAGE DEDICATION PLAT

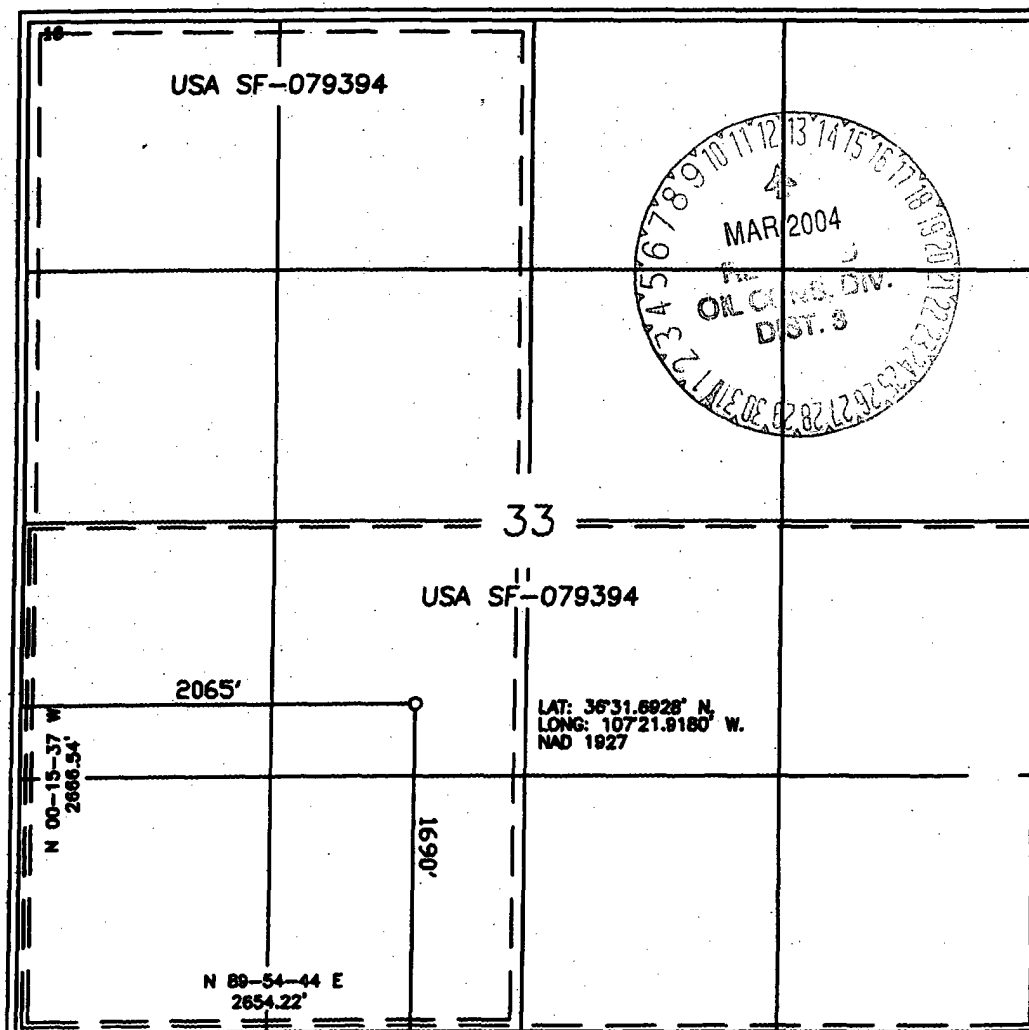
*API Number 30-039- 27638		*Pool Code 71599/72319	*Pool Name Basin Dakota/Blanco Mesaverde
*Property Code 7454	*Property Name SAN JUAN 27-5 UNIT		*Well Number 169M
*OGRID No. 14538	*Operator Name BURLINGTON RESOURCES OIL AND GAS COMPANY LP		*Elevation 6506'

10 Surface Location

UL or lot no.	Section	Township	Range	Lot Idn	Feet from the	North/South line	Feet from the	East/West line	County
K	33	27-N	5-W		1690'	SOUTH	2065'	WEST	RIO ARriba

11 Bottom Hole Location If Different From Surface

UL or lot no.	Section	Township	Range	Lot Idn	Feet from the	North/South line	Feet from the	East/West line	County
*Dedicated Acres DK S/320 MV W/320					*Joint or Infill		*Consolidation Code		*Order No.

NO ALLOWABLE WILL BE ASSIGNED TO THIS COMPLETION UNTIL ALL INTERESTS HAVE BEEN CONSOLIDATED
OR A NON-STANDARD UNIT HAS BEEN APPROVED BY THE DIVISION

17 OPERATOR CERTIFICATION

I hereby certify that the information contained herein is true and complete to the best of my knowledge and belief.

Joni Clark
Signature
Joni Clark
Printed Name
Regulatory Specialist
Title
2/25/04
Date

18 SURVEYOR CERTIFICATION

I hereby certify that the well location shown on this plat was plotted from field notes of actual surveys made by me or under my supervision, and that the same is true and correct to the best of my belief.

Date of Survey
Signature
15703
Certificate Number 15703

OPERATIONS PLAN

Well Name: San Juan 27-5 Unit #169N
Location: 1690' FSL, 2065' FWL, Sec 33, T-27-N, R-5-W
Rio Arriba County, NM
Latitude 36° 31.6928'N, Longitude 107° 21.9180'W
Formation: Blanco Mesaverde/Basin Dakota

Total Depth: 7640'

Logging Program: See San Juan 27-5 Unit Master Operations Plan

Mud Program: See San Juan 27-5 Unit Master Operations Plan

Casing Program (as listed, the equivalent, or better):

<u>Hole Size</u>	<u>Depth Interval</u>	<u>Csg. Size</u>	<u>Wt.</u>	<u>Grade</u>	<u>Cement</u>
12 1/4"	0' - 120'	9 5/8"	32.3#	H-40	113 cu.ft.
8 3/4"	0' - 3378'	7"	20.0#	J-55	756 cu.ft.
6 1/4"	0' - 7640'	4 1/2"	10.5#	J-55	580 cu.ft.

Tubing Program: See San Juan 27-5 Unit Master Operations Plan

- The Mesaverde and Dakota formations will be completed and commingled.
- The west half of Section 33 is dedicated to the Mesaverde and the south half of the Dakota formation in this well.
- Gas is dedicated.

Sean Corrigan
Drilling Engineer

February 25, 2004
Date

MULTI-POINT SURFACE USE PLAN

San Juan 27-5 Unit #169M

See San Juan 27-5 Unit Master Multi-point Surface Use Plan

- Anticipated pipeline facilities as shown on the attached plat from Williams Field Services.
- 900' of new road will be built.
- Water supply from the Candelaria Water Hole located SE/4 Section 29, T-27-N, R-5-W, New Mexico.
- Surface Ownership: Nick Candelaria
- Fee surface stips to BLM.
- Archaeological Resources: See Archaeological Survey technical report #2003-SJC-279 from San Juan College.


Regulatory Specialist

5/25/04
Date