

CORRECTED COPY

SUBMIT IN TRIPLICATE*
(Other instructions on
reverse side)Form approved.
Budget Bureau No. 42-R1425.UNITED STATES
DEPARTMENT OF THE INTERIOR
GEOLOGICAL SURVEY

APPLICATION FOR PERMIT TO DRILL, DEEPEN, OR PLUG BACK

1a. TYPE OF WORK

DRILL ☒DEEPEN ☐PLUG BACK ☐

b. TYPE OF WELL

OIL
WELL ☒GAS
WELL ☐

OTHER

SINGLE
ZONE ☒MULTIPLE
ZONE ☐

2. NAME OF OPERATOR

Tenneco Oil Company

3. ADDRESS OF OPERATOR

Suite 1200 Lincoln Tower Bldg., Denver, Colorado

4. LOCATION OF WELL (Report location clearly and in accordance with any State requirements.*)

At surface

1570' FNL & 330' FEL

At proposed prod. zone

14. DISTANCE IN MILES AND DIRECTION FROM NEAREST TOWN OR POST OFFICE*

10. DISTANCE FROM PROPOSED*

LOCATION TO NEAREST
PROPERTY OR LEASE LINE, FT.
(Also to nearest drlg. unit line, if any)

16. NO. OF ACRES IN LEASE

344

17. NO. OF ACRES ASSIGNED
TO THIS WELL

52

18. DISTANCE FROM PROPOSED LOCATION*
TO NEAREST WELL, DRILLING, COMPLETED,
OR APPLIED FOR, ON THIS LEASE, FT.

19. PROPOSED DEPTH

1600'

20. ROTARY OR CABLE TOOLS

Rotary

21. ELEVATIONS (Show whether DF, RT, GR, etc.)

6956 GR

22. APPROX. DATE WORK WILL START*

Upon Approval

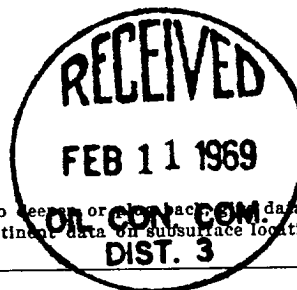
23.

PROPOSED CASING AND CEMENTING PROGRAM

SIZE OF HOLE	SIZE OF CASING	WEIGHT PER FOOT	SETTING DEPTH	QUANTITY OF CEMENT
9-7/8"	7-5/8"	26#	60	Sufficient to circulate
6-3/4"	4-1/2"	10.5#	1655	Sufficient to circulate

Above well will be a 1660' South Hospah (Upper Sand) development well. If production is indicated, casing will be set at total depth, well will be perforated and treated as necessary to establish commercial production.

Corrected copy filed to show change in location of proposed well.

joint with #3

RECEIVED

FEB 11 1969

U.S. GEOLOGICAL SURVEY

IN ABOVE SPACE DESCRIBE PROPOSED PROGRAM: If proposal is to deepen or plug back, give pertinent data on present productive zone and proposed new productive zone. If proposal is to drill or deepen directionally, give pertinent data on subsurface locations and measured and true vertical depths. Give blowout preventer program, if any.

24.

SIGNED

Perry M. Rigg

TITLE

District Office Supervisor

DATE

2-7-69

(This space for Federal or State office use)

PERMIT NO.

APPROVAL DATE

APPROVED BY

TITLE

DATE

CONDITIONS OF APPROVAL, IF ANY:

*See Instructions On Reverse Side

NEW MEXICO OIL CONSERVATION COMMISSION WELL LOCATION AND ACERAGE DEDICATION PLAT

All distances must be from the outer boundaries of the Section

Owner

Section

TENNECO OIL COMPANY

HOSPAB UNIT

Unit letter

Section

Township

Range

County

H

12

17 North

9 West

McKinley

Acres of land in the well

157

Section

North

Range

330

Section

330

Acres

Containing from

69566 ungraded

Hospah Upper Sand

Hospah, South (Upper Sand)

52

1. Out of the above, we certify to the subject well by acreage, acre or acreage and acreage.
2. If there is more than one lease, we certify to the well by acreage and acreage, and if there is more than one lease, we certify to the well by acreage and acreage.
3. If there is more than one lease of different ownership, we certify to the well by acreage and acreage, and if there is more than one lease, we certify to the well by acreage and acreage.
4. If there is more than one lease of different ownership, we certify to the well by acreage and acreage, and if there is more than one lease, we certify to the well by acreage and acreage.
5. If there is more than one lease of different ownership, we certify to the well by acreage and acreage, and if there is more than one lease, we certify to the well by acreage and acreage.
6. If there is more than one lease of different ownership, we certify to the well by acreage and acreage, and if there is more than one lease, we certify to the well by acreage and acreage.
7. If there is more than one lease of different ownership, we certify to the well by acreage and acreage, and if there is more than one lease, we certify to the well by acreage and acreage.
8. If there is more than one lease of different ownership, we certify to the well by acreage and acreage, and if there is more than one lease, we certify to the well by acreage and acreage.
9. If there is more than one lease of different ownership, we certify to the well by acreage and acreage, and if there is more than one lease, we certify to the well by acreage and acreage.
10. If there is more than one lease of different ownership, we certify to the well by acreage and acreage, and if there is more than one lease, we certify to the well by acreage and acreage.



CERTIFICATION

I hereby certify that the information contained herein is true and complete to the best of my knowledge and belief.

Larry M. Riggs

Larry M. Riggs

District Office Supervisor

Tenneco Oil Company

2-7-69

I hereby certify that the well location shown on this plat was plotted from field notes of actual surveys made by me or under my supervision, and that the same is true and correct to the best of my knowledge and belief.

20 December 1968

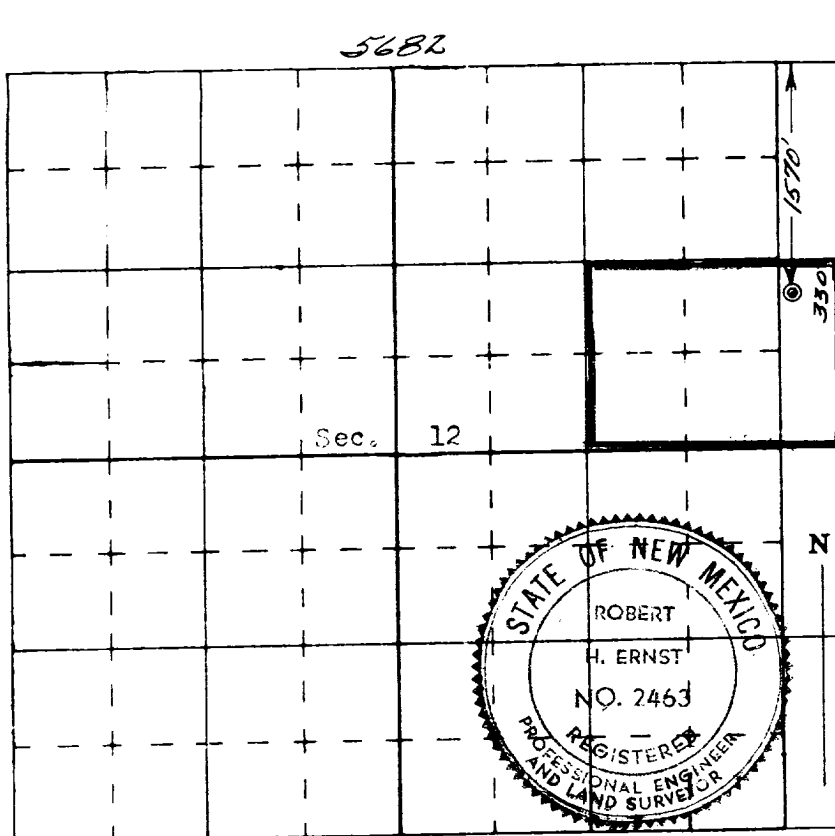
Robert H. Ernst

Robert H. Ernst

Robert H. Ernst

N. Mex. O. & L. 2-7-69

Certified



Ernst Engineering Co.
Durango, Colorado