

UNITED STATES
DEPARTMENT OF THE INTERIOR

30-031-20242

5. LEASE DESIGNATION AND SERIAL NO.

NM-081208

6. NAME OF OPERATOR

APPLICATION FOR LEASE OF LAND FOR OIL AND GAS DRILLING

1a. TITLE OF WELL

b. THROUGH

GAS ☐

9. WELL NO.

10. FIELD AND POOL, OR WILDCAT

11. LOCATION OF WELL
A. SECTION OR AREA

3. ADDRESS OF OPERATOR

Sub Bldg-Denver, Colo.

4. LOCATION (location clearly and in accordance with any State requirements.)*

At proposed prod. zone

14. DISTANCE IN FEET

15. DISTANCE FROM PROPOSED LOCATION*

(Also to nearest drlg. unit line, if any)

18. DISTANCE FROM PROPOSED LOCATION*
TO NEAREST WELL, DRILLING, COMPLETED,
OR APPLIED FOR, ON THIS LEASE, FT.

16. NO. OF ACRES IN LEASE

19. PROPOSED DEPTH

1650

17. NO. OF FEET
TO THIS WELL

20. ROTARY OR CABLE TOOLS

Rotary

21. ELEVATIONS (Show whether DF, RT, GR, etc.)

7073 GR

22. APPROX. DATE WORK WILL START*

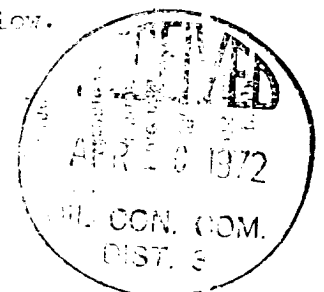
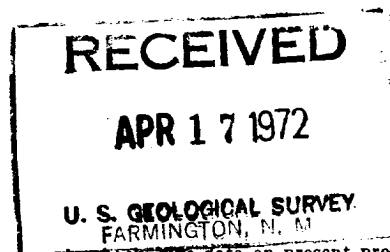
23.

PROPOSED CASING AND CEMENTING PROGRAM

SIZE OF HOLE	SIZE OF CASING	WEIGHT PER FOOT	SETTING DEPTH	QUANTITY OF CEMENT
12-1/4	8-5/8"	24	65	Suff. to circulate
7-7/8	5-1/2"	15.5	1650	Suff. to fill 500' above shallowest pay zone

1. 12-1/4" hole to 65', run 8-5/8" 24# sur. case casing and cement to surface. 2. 7-7/8" hole to approximate T.D. of 1650', log, run 5-1/2" casing to T.D. cement as required. 3. Test for water production or water infiltration. 4. Test well for production. 5. Test for gas production.

Note: Certified Plat to follow.



IN ABOVE SPACE DESCRIBE PROPOSED PROGRAM: If proposal is to deepen or plug back, give data on present productive zone and proposed new productive zone. If proposal is to drill or deepen directionally, give pertinent data on subsurface locations and measured and true vertical depths. Give blowout preventer program, if any.

24.

SIGNED

[Signature]

TITLE

Sr. Production Clerk

DATE

4/13/72

(This space for Federal or State office use)

PERMIT NO.

APPROVAL DATE

APPROVED BY

[Signature]

TITLE

DATE

CONDITIONS OF APPROVAL, IF ANY:

**NEW MEXICO OIL CONSERVATION COMMISSION
WELL LOCATION AND ACERAGE DEDICATION PLAT**

All distances must be from the outer boundaries of the Section

RECEIVED

APR 19 1972

**U. S. GEOLOGICAL SURVEY
FARMINGTON, N. M.**

Operator TENNECO OIL COMPANY		Lease HOSPAN		Well No. 51
Unit Letter R	Section 12	Township 17 North	Range 9 West	County Mc Kinley
Actual Footage Location of Well: 1775 feet from the NORTH line and 620 feet from the WEST line				
Ground Level Elev. 7073.0	Producing Formation Hospah (Upper)	Pool Hospah Upper	Dedicated Acreage: 40 Acres	

1. Outline the acreage dedicated to the subject well by colored pencil or hachure marks on the plat below.
2. If more than one lease is dedicated to the well, outline each and identify the ownership thereof (both as to working interest and royalty).
3. If more than one lease of different ownership is dedicated to the well, have the interests of all owners consolidated by communitization, unitization, force-pooling, etc?

() Yes () No If answer is "yes," type of consolidation

If answer is "no," list the owners and tract descriptions which have actually consolidated. (Use reverse side of this form if necessary.)

No allowable will be assigned to the well until all interests have been consolidated (by communitization, unitization, forced-pooling, or otherwise) or until a non standard unit, eliminating such interests, has been approved by the Commission.

CERTIFICATION

I hereby certify that the information contained herein is true and complete to the best of my knowledge and belief.

Name

G.A. Ford

Position

Sr. Production Clerk

Company

Tenneco Oil Company

Date

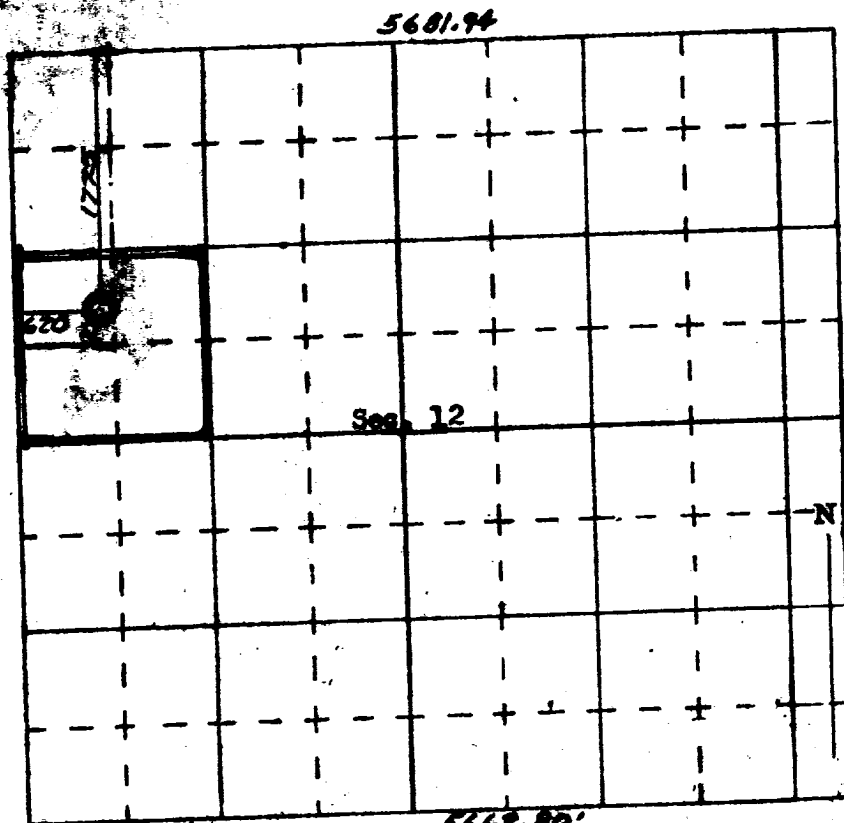
4/14/72

I hereby certify that the well location shown on this plat was plotted from field notes of actual surveys made by me or under my supervision, and that the same is true and correct to the best of my knowledge and belief.

Date Surveyed

Registered Professional Engineer
and/or Land Surveyor

Certificate No.



SCALE - 1 INCHES EQUALS 1 MILE

SAN JUAN ENGINEERING COMPANY, FARMINGTON, N. M.