

CONDITIONS OF APPROVAL IF ANY:

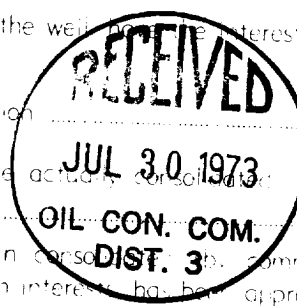
JUL 2 1973

# NEW MEXICO OIL CONSERVATION COMMISSION WELL LOCATION AND ACERAGE DEDICATION PLAT

All distances must be from the outer boundaries of the Section

Operator **TESORO PETROLEUM CORPORATION** Lease **SANTA FE RAILROAD A** Well No **4-84**  
Unit Letter **0** Section **1** Township **17 North** Range **9 West** County **McKinley**  
Actual Footage Location of Well **5** feet from the **South** end of **2900** feet from the **East** line  
Ground Level Elev. **7049 ungraded** Producing Formation **Lower Hospah** **South Hospah Lower Sand** Dedicated Average **N.A.**

- Outline the acreage dedicated to the subject well by colored pencil or hatchure marks on the plat below.
- If more than one lease is dedicated to the well, outline each and identify the ownership thereof both as to working interest and royalty.
- If more than one lease of different ownership is dedicated to the well, have the interests of all owners been consolidated by communitization, unitization, forced pooling, etc?  
☐ Yes ☐ No If answer is "yes," type of consolidation \_\_\_\_\_  
If answer is "no," list the owners and tract descriptions which have actually consolidated. (Use reverse side of this form if necessary.) \_\_\_\_\_  
No allowable will be assigned to the well until all interests have been consolidated by communitization, unitization, forced pooling, or otherwise or until a non-unitary unit, eliminating such interests, has been approved by the Commission.



## CERTIFICATION

I hereby certify that the information contained herein is true and complete to the best of my knowledge and belief.

*J. Harvey Ashford, Jr.*  
J. Harvey Ashford, Jr.

Operations Manager

Tesoro Petroleum Corporation

Date **7/20/73**

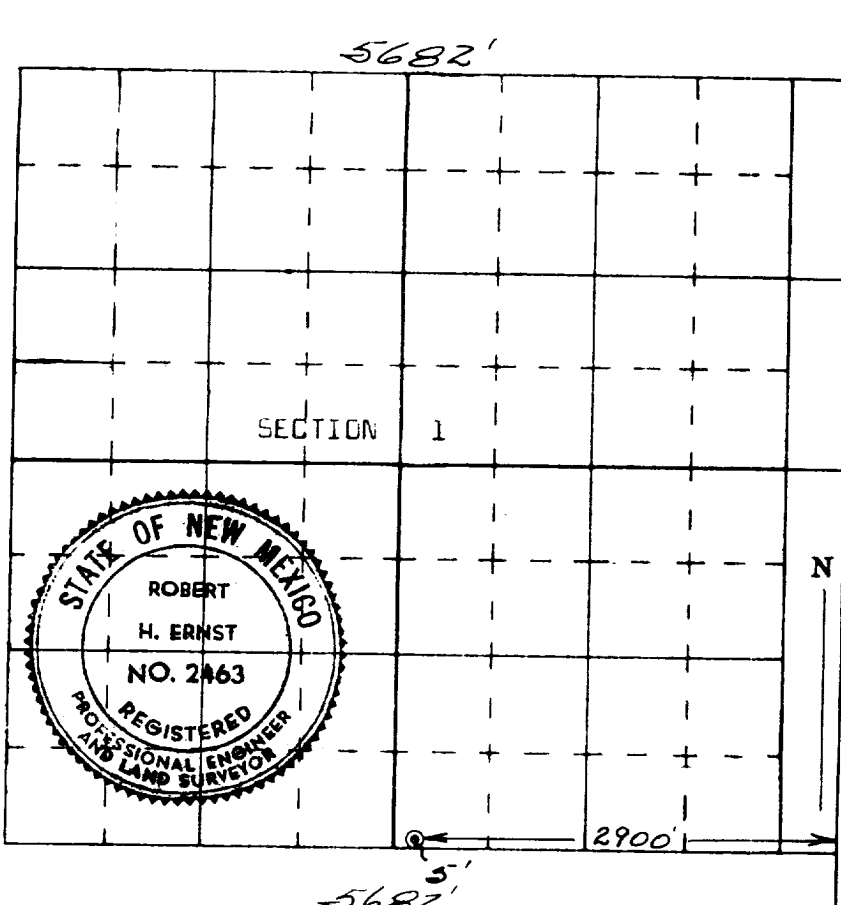
I hereby certify that the well location shown on this plat was plotted from field notes of actual surveys made by me or under my supervision, and that the same is true and correct to the best of my knowledge and belief.

**18 July 1973**

*Robert H. Ernst*  
Robert H. Ernst  
and/or Land Surveyor

New Mexico PE & LS 2463

Certificate No. \_\_\_\_\_



ERNST ENGINEERING COMPANY  
DURANGO, COLORADO