

NO. OF COPIES RECEIVED	
DISTRIBUTION	
SANTA FE	
FILE	
U.S.G.S.	
LAND OFFICE	
OPERATOR	

NEW MEXICO OIL CONSERVATION COMMISSION

30-031-20746
Form C-101
Revised 1-1-65

5A. Indicate Type of Lease STATE <input type="checkbox"/> FEE <input checked="" type="checkbox"/>
5. State Oil & Gas Lease No.
7. Unit Agreement Name
8. Farm or Lease Name Santa Fe Railroad "A"
9. Well No. 95
10. Field and Pool, or Wildcat South Hospah Field Lower Hospah Sand
12. County McKinley
19. Proposed Depth 1640'
19A. Formation Lower Hospah
20. Rotary or C.T. Rotary
21. Approx. Date Work will start Nov. 12, 1981

APPLICATION FOR PERMIT TO DRILL, DEEPEN, OR PLUG BACK

a. Type of Work DRILL <input checked="" type="checkbox"/> DEEPEN <input type="checkbox"/> PLUG BACK <input type="checkbox"/>
b. Type of Well OIL WELL <input checked="" type="checkbox"/> GAS WELL <input type="checkbox"/> OTHER <input type="checkbox"/>
c. Name of Operator Tesoro Petroleum Corp.
d. Address of Operator 2000 1st of Denver Plaza, Denver, CO 80202
e. Location of Well UNIT LETTER I LOCATED 1450 FEET FROM THE South LINE AND 400 FEET FROM THE East LINE OF SEC. 1 TWP. 17N RGE. 9W NMPM
11. Location (Show whether DE, RT, etc.) 6926' GL
21A. Kind & Status Plug. Bond NM Blanket
21B. Drilling Contractor Salazar

PROPOSED CASING AND CEMENT PROGRAM

SIZE OF HOLE	SIZE OF CASING	WEIGHT PER FOOT	SETTING DEPTH	SACKS OF CEMENT	EST. TOP
12 1/4"	8 5/8"	24#	40' GL	30 sx "B" w/3% CC	surface
7 7/8"	5 1/2"	15.5#	1640'	80 sx "B" w/1% CC	1200' GL

- Drill 12 1/4" hole to 40 ft. and set 40 ft. of 8 5/8", 24# casing. Cement to surface w/30 sks. class "B" w/3% CaCl₂. WOC 12 hrs.
- Drill 7 7/8" hole to 1640 ft. No BOP required.
- Run IES-GR-SP logs from 1640' - 1200 ft.
- Run 5 1/2", 15.5#, K-55 casing to TD and cement from TD to 1200 ft. w/80 sks. class "B" w/1% calcium chloride.
- Perforate Lower Hospah formation from approx. 1560-1585' w/2 JSPF. No stimulation is anticipated. Should well appear non-commercial, permission to P&A will be applied for.
- Run 2 7/8" tubing, 3/4" rods, and pump, and prepare well for oil production.

No additional surface disturbance is anticipated in doing this work.

APPROVAL
FOR 90 DAYS UNLESS
DRILLING COMMENCED,

EXPIRES 4-28-82

IN ABOVE SPACE DESCRIBE PROPOSED PROGRAM; IF PROPOSAL IS TO DEEPEN OR PLUG BACK, GIVE DATA ON PRESENT PRODUCTION AND PROPOSED NEW PRODUCTION. GIVE BLOWOUT PREVENTER PROGRAM, IF ANY.

I hereby certify that the information above is true and complete to the best of my knowledge and belief.

Signed W. P. Parks Title District Operations Manager Date 10/20/81

(This space for State Use)

APPROVED BY Jeff A. Edmister TITLE DEPUTY OIL & GAS INSPECTOR, DIST. #3 DATE OCT 28 1981

CONDITIONS OF APPROVAL, IF ANY:

NW4 - 546



OIL CONSERVATION DIVISION

STATE OF NEW MEXICO
ENERGY AND MINERALS DEPARTMENT

P. O. BOX 2088

SANTA FE, NEW MEXICO 87501

Form C-102
Revised 10-1-78

All distances must be from the outer boundaries of the Section.

Operator TESORO PETROLEUM CORPORATION			Lease SANTA FE "A"		Well No. 95
Unit Letter I	Section 1	Township 17N	Range 9W	County McKinley	
Actual Footage Location of Well: 1450 feet from the South line and 400 feet from the East line					
Ground Level Elev. 6926	Producing Formation Lower Hospah		Pool South Hospah Lower Sand		Dedicated Acreage: 52 Acres

1. Outline the acreage dedicated to the subject well by colored pencil or hachure marks on the plat below.
2. If more than one lease is dedicated to the well, outline each and identify the ownership thereof (both as to working interest and royalty). One lease
3. If more than one lease of different ownership is dedicated to the well, have the interests of all owners been consolidated by communitization, unitization, force-pooling, etc?

☐ Yes ☐ No If answer is "yes," type of consolidation _____

If answer is "no," list the owners and tract descriptions which have actually been consolidated. (Use reverse side of this form if necessary.) _____

No allowable will be assigned to the well until all interests have been consolidated (by communitization, unitization, forced-pooling, or otherwise) or until a non-standard unit, eliminating such interests, has been approved by the Commission.



Sec.

1

400'

1450'

CERTIFICATION

I hereby certify that the information contained herein is true and complete to the best of my knowledge and belief.

Name

W. F. Parks

Position

Dist. Operations Manager

Company

Tesoro Petroleum Corp.

Date

10/20/81

I hereby certify that the well location shown on this plat was plotted from field notes of actual surveys made by me or under my supervision, and that the same is true and correct to the best of my knowledge and belief.

Date Surveyed

October 21, 1981

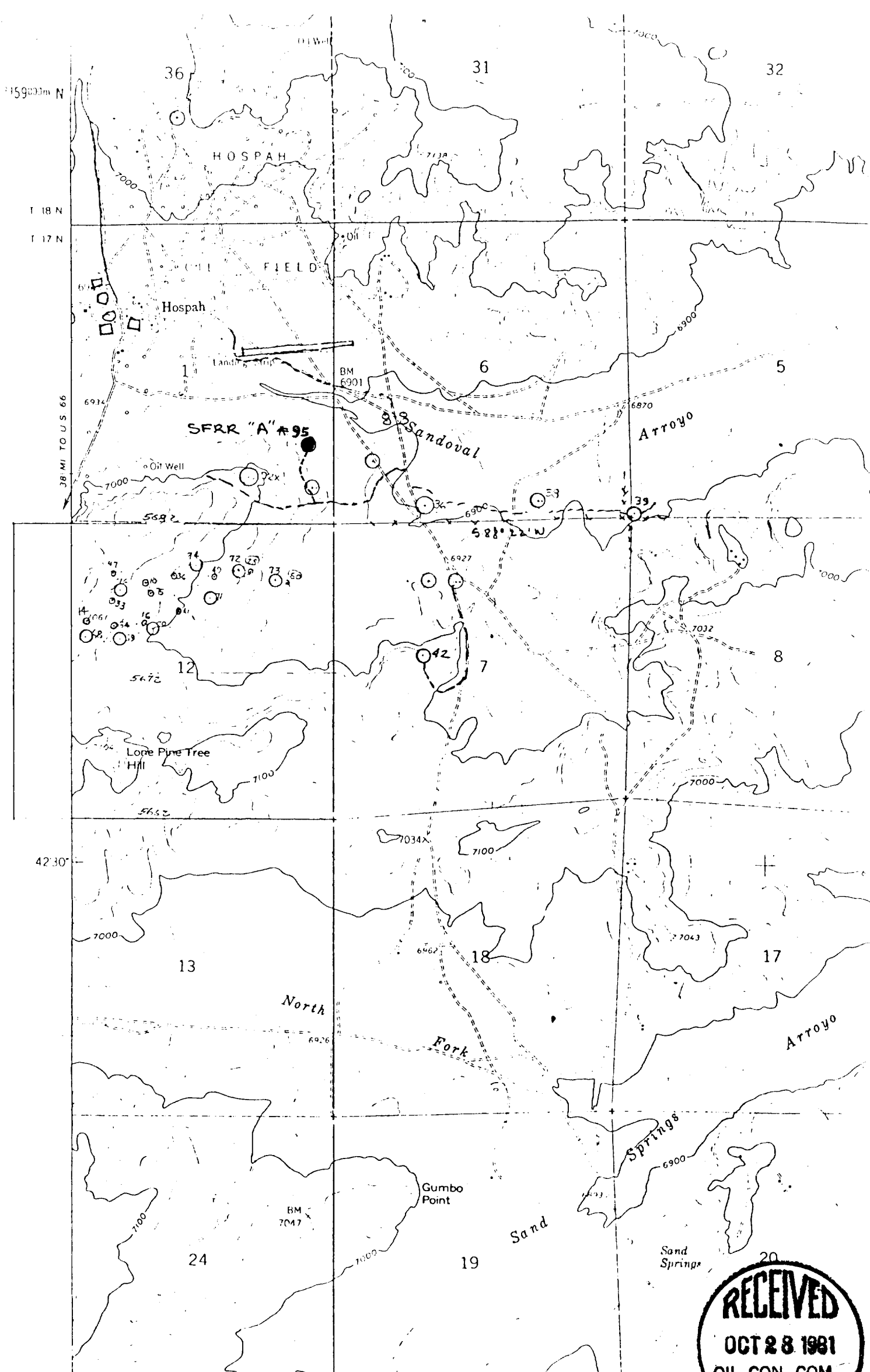
Registered Professional Engineer
and/or Land Surveyor

Fred B. Kerr Jr.

Certificate No.

3950

0 330 660 990 1320 1650 1980 2310 2640 2970 3300 3630 3960 4290 4620 4950 5280 5610 5940 6270 6600 6930 7260 7590 7920 8250 8580 8910 9240 9570 9900



Vicinity Map for
 TESORO PETROLEUM CORP #95 SANTA FE "A"
 1450'FSL 400'FEL Sec. 1-T17N-R9W
 MCKINLEY COUNTY, NEW MEXICO

