

NO. OF COPIES RECEIVED

DISTRIBUTION

SANTA FE

FILE

U.S.G.S.

LAND OFFICE

OPERATOR

## NEW MEXICO OIL CONSERVATION COMMISSION

Form C-101  
Revised 1-1-65

5A. Indicate Type of Lease

STATE ☐FEE ☒

5. State Oil &amp; Gas Lease No.

## APPLICATION FOR PERMIT TO DRILL, DEEPEN, OR PLUG BACK

1a. Type of Work

DRILL ☒DEEPEN ☐PLUG BACK ☐

b. Type of Well

OIL WELL ☒GAS WELL ☐

OTHER

SINGLE ZONE ☒MULTIPLE ZONE ☐

2. Name of Operator

Tesoro Petroleum Corporation

3. Address of Operator

633 17th St., Suite 2000 Denver, CO 80202 Telephone: 303-825-2000

4. Location of Well

UNIT LETTER C LOCATED 730 FEET FROM THE South LINEAND 1860FEET FROM THE East LINE OF SEC. 1 TWP. 17 N RGE. 9W NMPM

7. Unit Agreement Name

Santa Fe Railroad 'A'

8. Farm or Lease Name

Santa Fe Railroad 'A'

9. Well No.

96

10. Field and Pool, or Wildcat

South Hospah, Lower Hospah

12. County

McKinley

19. Proposed Depth

1702

19A. Formation

Lower Hospah

20. Rotary or C.T.

Rotary

21. Elevations (Show whether DF, RT, etc.)

7032 GL

21A. Kind &amp; Status Plug. Bond

NM Blanket

21B. Drilling Contractor

Salazar Drilling

22. Approx. Date Work will start

July 5, 1982

23.

## PROPOSED CASING AND CEMENT PROGRAM

SIZE OF HOLE	SIZE OF CASING	WEIGHT PER FOOT	SETTING DEPTH	SACKS OF CEMENT	EST. TOP
12 1/4"	8 5/8"	24#	40'	Circ. to Surf.	Surface
7 7/8"	5 1/2"	15.5#		80 sx	1200' ±

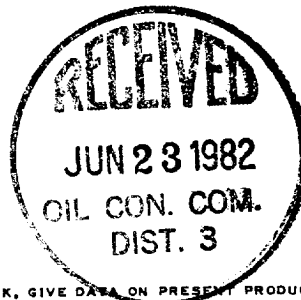
## Proposed Activities:

Drill 12 1/4" hole to 40 ft. and run and cement 8 5/8" casing.

Drill 7 7/8" hole to TD. No BOP required.

Run 5 1/2" casing to TD and cement.

Perforate Lower Hospah formation and swab test. Should well appear non-commercial, permission to P&amp;A will be applied for.

APPROVAL VALID  
FOR 90 DAYS UNLESS  
DRILLING COMMENCED,EXPIRES December 23, 1982

IN ABOVE SPACE DESCRIBE PROPOSED PROGRAM: IF PROPOSAL IS TO DEEPEN OR PLUG BACK, GIVE DATA ON PRESENT PRODUCTIVE ZONE AND PROPOSED NEW PRODUCTIVE ZONE. GIVE BLOWOUT PREVENTER PROGRAM, IF ANY.

I hereby certify that the information above is true and complete to the best of my knowledge and belief.

Signed W. F. Parks Title District Operations Manager Date 6/18/82

(This space for State Use)

Original Signed by FRANK T. CHAVEZ

SUPERVISOR DISTRICT # 3

JUN 23 1982

APPROVED BY \_\_\_\_\_ TITLE \_\_\_\_\_ DATE \_\_\_\_\_

CONDITIONS OF APPROVAL, IF ANY:

NEW MEXICO OIL CONSERVATION COMMISSION  
WELL LOCATION AND ACREAGE DEDICATION PLAT

Form C-102  
Supersedes C-128  
Effective 1-1-65

All distances must be from the outer boundaries of the Section.

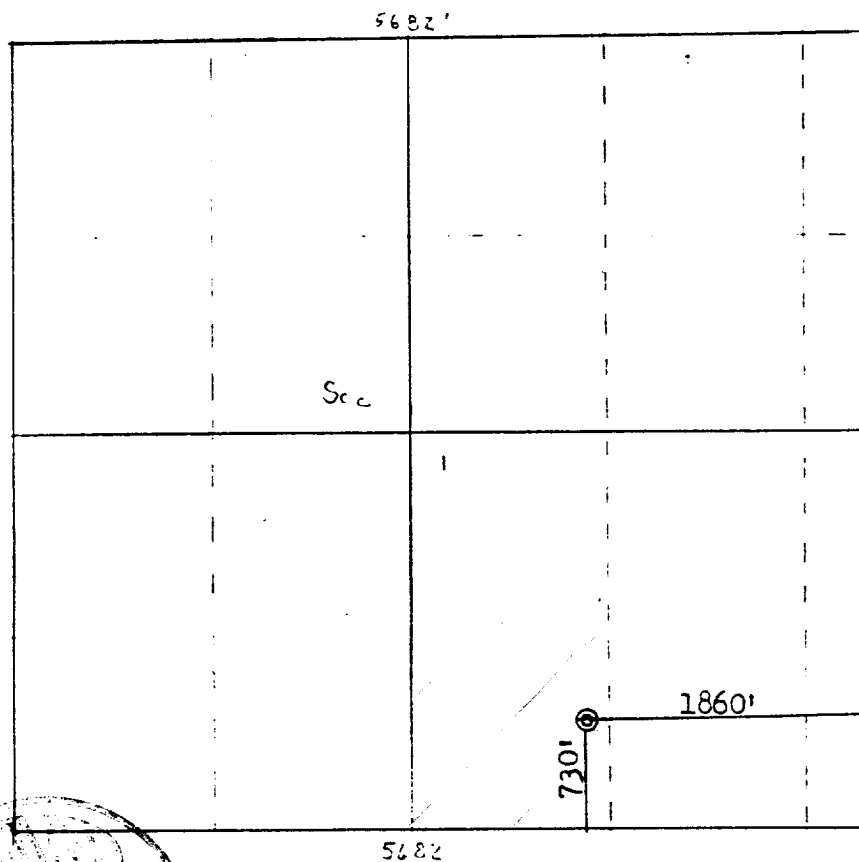
Operator <b>TESORO PETROLEUM CORPORATION</b>			Lease <b>SANTA FE "A"</b>		Well No. <b>96</b>
Unit Letter <b>0</b>	Section <b>1</b>	Township <b>17N</b>	Range <b>9W</b>	County <b>McKinley</b>	
Actual Footage Location of Well: <b>730</b> feet from the <b>South</b> line and <b>1860</b> feet from the <b>East</b> line					
Ground Level Elev: <b>7032</b>	Producing Formation <b>South Hesperia</b>		Pool <b>Lower</b>		Dedicated Acreage: <b>40</b> Joint with <b>73, 84, 85</b> Acres

1. Outline the acreage dedicated to the subject well by colored pencil or hatchure marks on the plat below.
2. If more than one lease is dedicated to the well, outline each and identify the ownership thereof (both as to working interest and royalty).
3. If more than one lease of different ownership is dedicated to the well, have the interests of all owners been consolidated by communitization, unitization, force-pooling, etc?

☐ Yes ☐ No If answer is "yes," type of consolidation \_\_\_\_\_

If answer is "no," list the owners and tract descriptions which have actually been consolidated. (Use reverse side of this form if necessary.) \_\_\_\_\_

No allowable will be assigned to the well until all interests have been consolidated (by communitization, unitization, forced-pooling, or otherwise) or until a non-standard unit, eliminating such interests, has been approved by the Commission.



Scale: 1" = 1320'

CERTIFICATION

I hereby certify that the information contained herein is true and complete to the best of my knowledge and belief.

Name \_\_\_\_\_

Position \_\_\_\_\_

Company \_\_\_\_\_

Date \_\_\_\_\_

I hereby certify that the well location shown on this plat was plotted from field notes of actual surveys made by me or under my supervision, and that the same is true and correct to the best of my knowledge and belief.

Date Surveyed \_\_\_\_\_

**June 22, 1982**

Registered Professional Engineer  
and Land Surveyor

**Fred B. Kerr Jr.**

Certificate No.

**3950**

