

UNITED STATES
DEPARTMENT OF THE INTERIOR
GEOLOGICAL SURVEY

APPLICATION FOR PERMIT TO DRILL, DEEPEN, OR PLUG BACK

1a. TYPE OF WORK

DRILL ☒

DEEPEN ☐

PLUG BACK ☐

b. TYPE OF WELL

OIL
WELL ☒

GAS
WELL ☐

OTHER ☐

SINGLE
ZONE ☐

MULTIPLE
ZONE ☐

2. NAME OF OPERATOR

Bird Oil Corporation

3. ADDRESS OF OPERATOR

717 Seventeenth St., Suite 2860, Denver, CO 80202

4. LOCATION OF WELL (Report location clearly and in accordance with any State requirements.)

At surface

2310' FNL & 910' FWL (SW NW)

At proposed prod. zone

Same

14. DISTANCE IN MILES AND DIRECTION FROM NEAREST TOWN OR POST OFFICE*

13 miles Southeast of Star Lake Compressor Station

15. DISTANCE FROM PROPOSED*

LOCATION TO NEAREST

PROPERTY OR LEASE LINE, FT.

(Also to nearest drig. unit line, if any)

910'

18. DISTANCE FROM PROPOSED LOCATION*

TO NEAREST WELL, DRILLING, COMPLETED,

OR APPLIED FOR, ON THIS LEASE, FT.

1240'

16. NO. OF ACRES, AND LEASE

320

19. PROPOSED DEPTH

2200'

17. NO. OF ACRES ASSIGNED
TO THIS WELL

40

20. ROTARY OR CABLE TOOLS

Rotary

21. ELEVATIONS (Show whether DF, RT, GR. DRILLING OPERATIONS AUTHORIZED ARE

SUBJECT TO COMPLIANCE WITH ATTACHED

6566' GR

22. APPROX. DATE WORK WILL START*

April 1, 1983

23. GENERAL REQUIREMENTS AND CEMENTING PROGRAM

This action is subject to administrative
appeal pursuant to 30 CFR 2901

SIZE OF HOLE	SIZE OF CASING	WEIGHT PER FOOT	SETTING DEPTH	QUANTITY OF CEMENT
10 3/4"	8 5/8"	24# J-55	90'	10 sxs Class C
7 7/8"	4 1/2"	9.5# J-55	2200'	200 sxs Class C w/2% CaCl

1. Drill 10 3/4" hole and set 8 5/8" surface casing to 90' w/cement to surface
2. W.O.C. - Test surface casing w/mud pump
3. Drill 7 7/8" hole to approximately 2200' using gel and water
4. Plan to use mud logging unit during drilling. Run DST as warranted and logs at T.D. as warranted.
5. Set 4 1/2" and cement to surface if warranted.
6. Run logs, perforate, and stimulate as needed.

Estimated tops: Surface Formation--Lewis Shale

Chacra--572'

Cliff House--1078'

Menefee--1132'

Point Lookout--2053'

Estimated Depth of Anticipated Oil or Gas: 1950'

See attached diagram for pressure control equipment

Duration of Operations: 10 days

IN ABOVE SPACE DESCRIBE PROPOSED PROGRAM: If proposal is to deepen or plug back, give data on present productive zone and proposed new productive zone. If proposal is to drill or deepen directionally, give pertinent data on subsurface locations and measured and true vertical depths. Give blowout preventer program, if any.

24.

SIGNED

James F. Sims

TITLE

District Engineer

DATE

2-23-85

(This space for Federal or State office use)

PERMIT NO.

APPROVAL DATE

APPROVED BY

CONDITIONS OF APPROVAL, IF ANY:

TITLE

APPROVED
AS AMENDED

MAR 15 1983

James F. Sims
JAMES F. SIMS
DISTRICT ENGINEER

OIL CONSERVATION DIVISION

P. O. BOX 2088

SANTA FE, NEW MEXICO 87501

Form C-107
Revised 10-1-78STATE OF NEW MEXICO
ENERGY AND MINERALS DEPARTMENT

All distances must be from the outer boundaries of the Section.

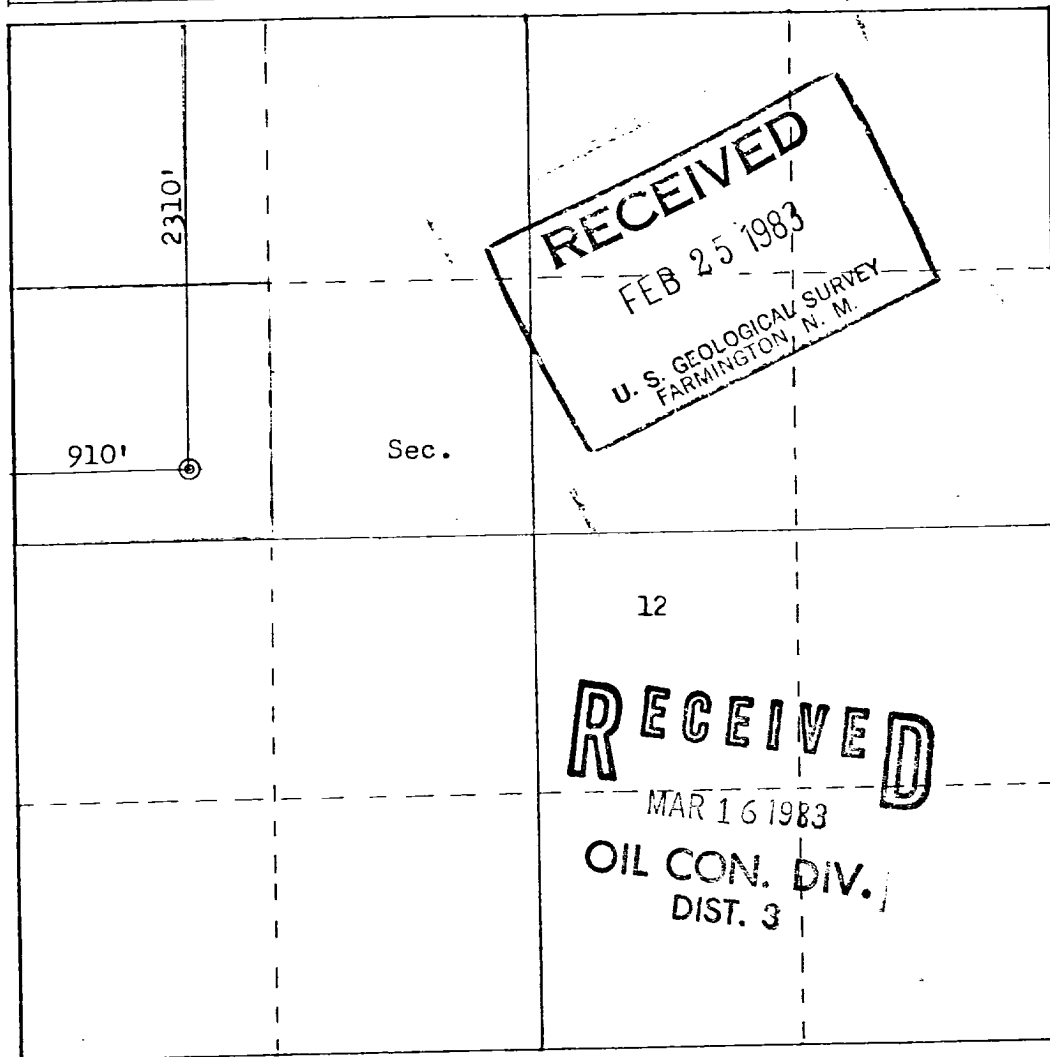
Operator BIRD OIL CORPORATION			Lease BIRD-FEDERAL		Well No. 12-5
Unit Letter E	Section 12	Township 19N	Range 5W	County McKinley	
Actual Footage Location of Well: 2310 feet from the North line and 910 feet from the West line					
Ground Level Elev. 6566	Producing Formation M.		Pool Unders	Dedicated Acreage: Acres	

1. Outline the acreage dedicated to the subject well by colored pencil or hatchure marks on the plat below.
2. If more than one lease is dedicated to the well, outline each and identify the ownership thereof (both as to working interest and royalty).
3. If more than one lease of different ownership is dedicated to the well, have the interests of all owners been consolidated by communitization, unitization, force-pooling, etc?

☐ Yes ☐ No If answer is "yes," type of consolidation _____

If answer is "no," list the owners and tract descriptions which have actually been consolidated. (Use reverse side of this form if necessary.) _____

No allowable will be assigned to the well until all interests have been consolidated (by communitization, unitization, forced-pooling, or otherwise) or until a non-standard unit, eliminating such interests, has been approved by the Commission.



Scale: 1"=1000'

CERTIFICATION

I hereby certify that the information contained herein is true and complete to the best of my knowledge and belief.

Name

James K. Folk

Position

Operators Representative

Company

Bird Oil Corporation

Date

February 24, 1983

I hereby certify that the well location shown on this plat was plotted from field notes of actual surveys made by me or under my supervision, and that the same is true and correct to the best of my knowledge and belief.

Date Surveyed

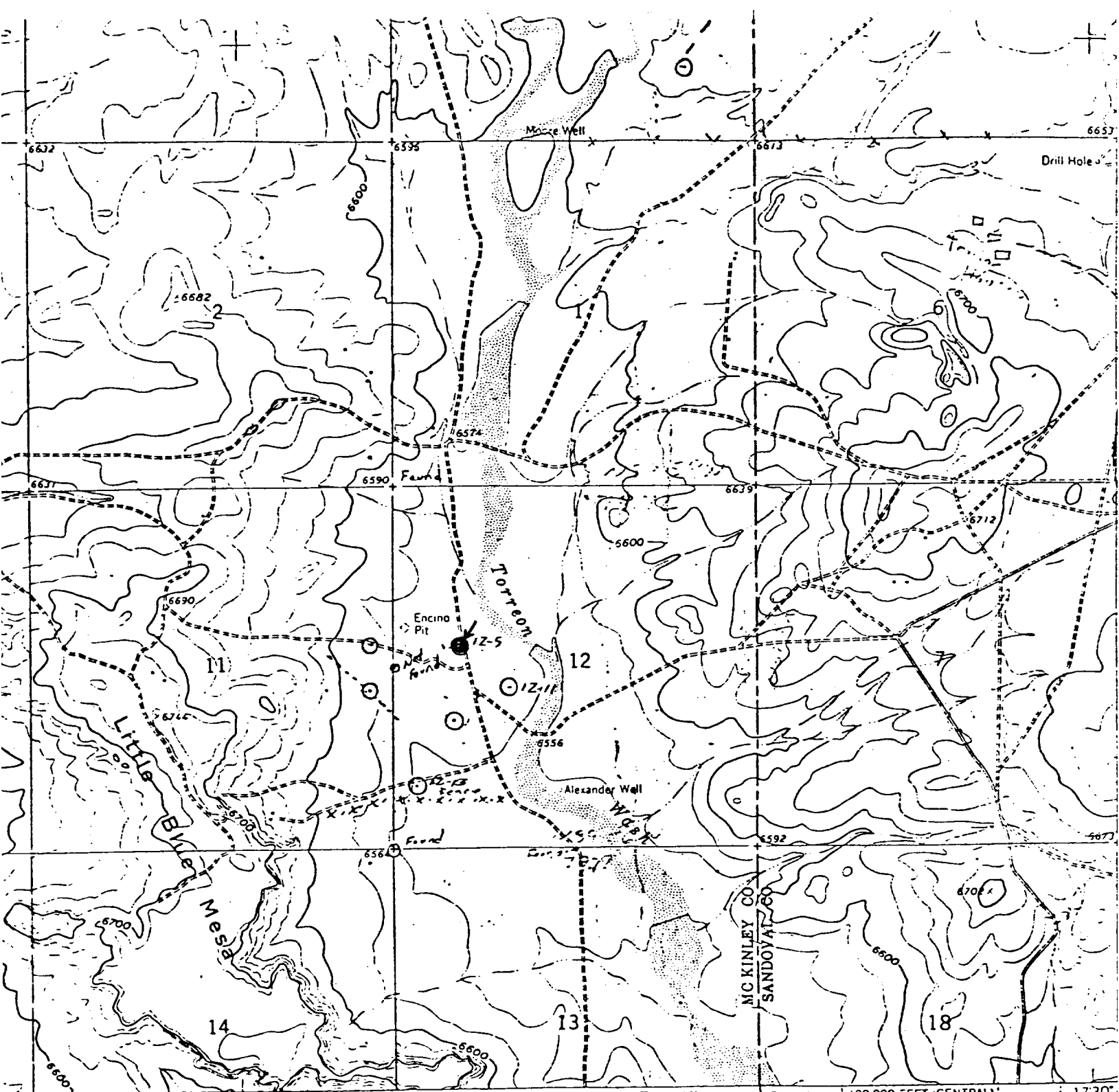
February 21, 1983

Registered Professional Engineer
and Land Surveyor

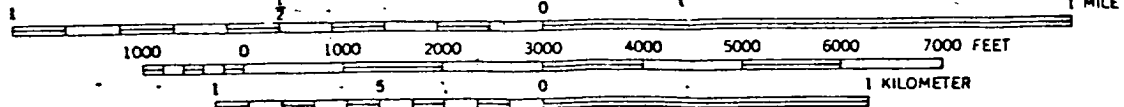
Fred B. Kerr Jr.

Certificate No. 3950

3950



SCALE 1:24 000



CONTOUR INTERVAL 20 FEET
 DOTTED LINES REPRESENT 10-FOOT CONTOURS
 DATUM IS MEAN SEA LEVEL

TRUE NORTH
 MAGNETIC NORTH
 APPROXIMATE MEAN DECLINATION, 1961

Vicinity Map for
 BIRD OIL CORPORATION #12-5 BIRD-FEDERAL
 2310'FNL 910'FWL Sec. 12-T19N-R5W
 MCKINLEY COUNTY, NEW MEXICO

INGTON 25, D C
 WEST