

UNITED STATES  
DEPARTMENT OF THE INTERIOR  
GEOLOGICAL SURVEY

## APPLICATION FOR PERMIT TO DRILL, DEEPEN, OR PLUG BACK

## 1a. TYPE OF WORK

DRILL ☒DEEPEN ☐PLUG BACK ☐

## b. TYPE OF WELL

OIL  
WELL ☒GAS  
WELL ☐

OTHER

SINGLE  
ZONE ☐MULTIPLE  
ZONE ☐

## 2. NAME OF OPERATOR

JAMES L. LUDWICK

## 3. ADDRESS OF OPERATOR

P.O. Box 70

Farmington, New Mexico 87401

## 4. LOCATION OF WELL (Report location clearly and in accordance with any State requirements.)\*

At surface

At proposed prod. zone

490' FNL, 425' FEL

## 14. DISTANCE IN MILES AND DIRECTION FROM NEAREST TOWN OR POST OFFICE\*

30 miles SW Cuba, New Mexico

## 15. DISTANCE FROM PROPOSED\*

LOCATION TO NEAREST  
PROPERTY OR LEASE LINE, FT.  
(Also to nearest drig. unit line, if any)

425'

## 16. NO. OF ACRES IN LEASE

160

17. NO. OF ACRES ASSIGNED  
TO THIS WELL

40

## 18. DISTANCE FROM PROPOSED LOCATION\*

TO NEAREST WELL, DRILLING, COMPLETED,  
OR APPLIED FOR, ON THIS LEASE, FT.

1400'

## 19. PROPOSED DEPTH

2200' Point Lookout

## 20. ROTARY OR CABLE TOOLS

Rotary

## 21. ELEVATIONS (Show whether DF, RT, GR, etc.)

6640 GR

## 22. APPROX. DATE WORK WILL START\*

May 15, 1983

DRILLING OPERATIONS AUTHORIZED ARE

SUBJECT TO COMPLIANCE WITH ATTACHED

"GENERAL REQUIREMENTS"

## PROPOSED CASING AND CEMENTING PROGRAM

This action is subject to administrative  
appeal pursuant to 30 CFR 290.

SIZE OF HOLE	SIZE OF CASING	WEIGHT PER FOOT	SETTING DEPTH	QUANTITY OF CEMENT
8-3/4	7	24 J-55	60	50 sx. circulated 59 ft 3 CIB'
6 1/2	4 1/2	9.5 J-55	2200	250 sx. circulated 275 ft 3 QB'

SEE NTL-6 ATTACHMENTS

Gas is not dedicated.

RECEIVED

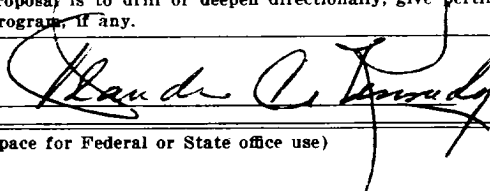
JUN 30 1983

CON. DIV.  
DIST. 3

IN ABOVE SPACE DESCRIBE PROPOSED PROGRAM: If proposal is to deepen or plug back, give data on present productive zone and proposed new productive zone. If proposal is to drill or deepen directionally, give pertinent data on subsurface locations and measured and true vertical depths. Give blowout preventer program, if any.

24.

SIGNED



TITLE

Agent

DATE

3-24-1983

(This space for Federal or State office use)

PERMIT NO.

APPROVAL DATE

APPROVED BY

TITLE

CONDITIONS OF APPROVAL, IF ANY:

APPROVED  
AS AMENDED  
DATEJUN 28 1983  
JAMES F. SIMS  
DISTRICT ENGINEER

\*See Instructions On Reverse Side

## OIL CONSERVATION DIVISION

STATE OF NEW MEXICO  
ENERGY AND MINERALS DEPARTMENTP. O. BOX 2088  
SANTA FE, NEW MEXICO 87501Form C-107  
Revised 10-1-78

All distances must be from the outer boundaries of the Section.

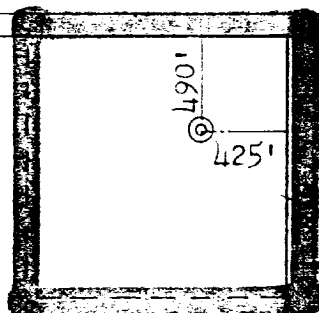
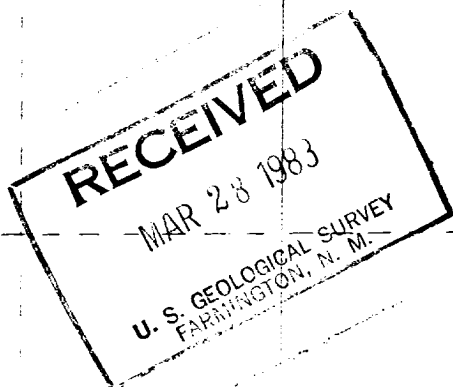
Operator <b>JAMES L. LUDWICK</b>		Lease <b>INDIAN</b>		Well No. <b>2-18</b>	
Unit Letter <b>A</b>	Section <b>18</b>	Township <b>19N -</b>	Range <b>5W</b>	County <b>McKinley</b>	
Actual Footage Location of Well: <b>L90</b> feet from the <b>North</b> line <b>425</b> feet from the <b>East</b> line					
Ground Level Elev. <b>6621</b>	Producing Formation <b>Point Lookout</b>		Pool <b>Wildcat</b>	Dedicated Acreage: <b>40</b> Acres	

1. Outline the acreage dedicated to the subject well by colored pencil or hatchure marks on the plat below.
2. If more than one lease is dedicated to the well, outline each and identify the ownership thereof (both as to working interest and royalty).
3. If more than one lease of different ownership is dedicated to the well, have the interests of all owners been consolidated by communitization, unitization, force-pooling, etc?

☐ Yes ☐ No If answer is "yes," type of consolidation \_\_\_\_\_

If answer is "no," list the owners and tract descriptions which have actually been consolidated. (Use reverse side of this form if necessary.) \_\_\_\_\_

No allowable will be assigned to the well until all interests have been consolidated (by communitization, unitization, forced-pooling, or otherwise) or until a non-standard unit, eliminating such interests, has been approved by the Commission.



## CERTIFICATION

I hereby certify that the information contained herein is true and complete to the best of my knowledge and belief.

Name

Claude C. Kennedy

Position

Agent

Company

James L. Ludwick

Date

3-26-1983

I hereby certify that the well location shown on this plat was plotted from field notes of actual surveys made by me or under my supervision, and that the same is true and correct to the best of my knowledge and belief.

Date Surveyed

March 21, 1983

Registered Professional Engineer  
and Land Surveyor

Fred B. Kern Jr.

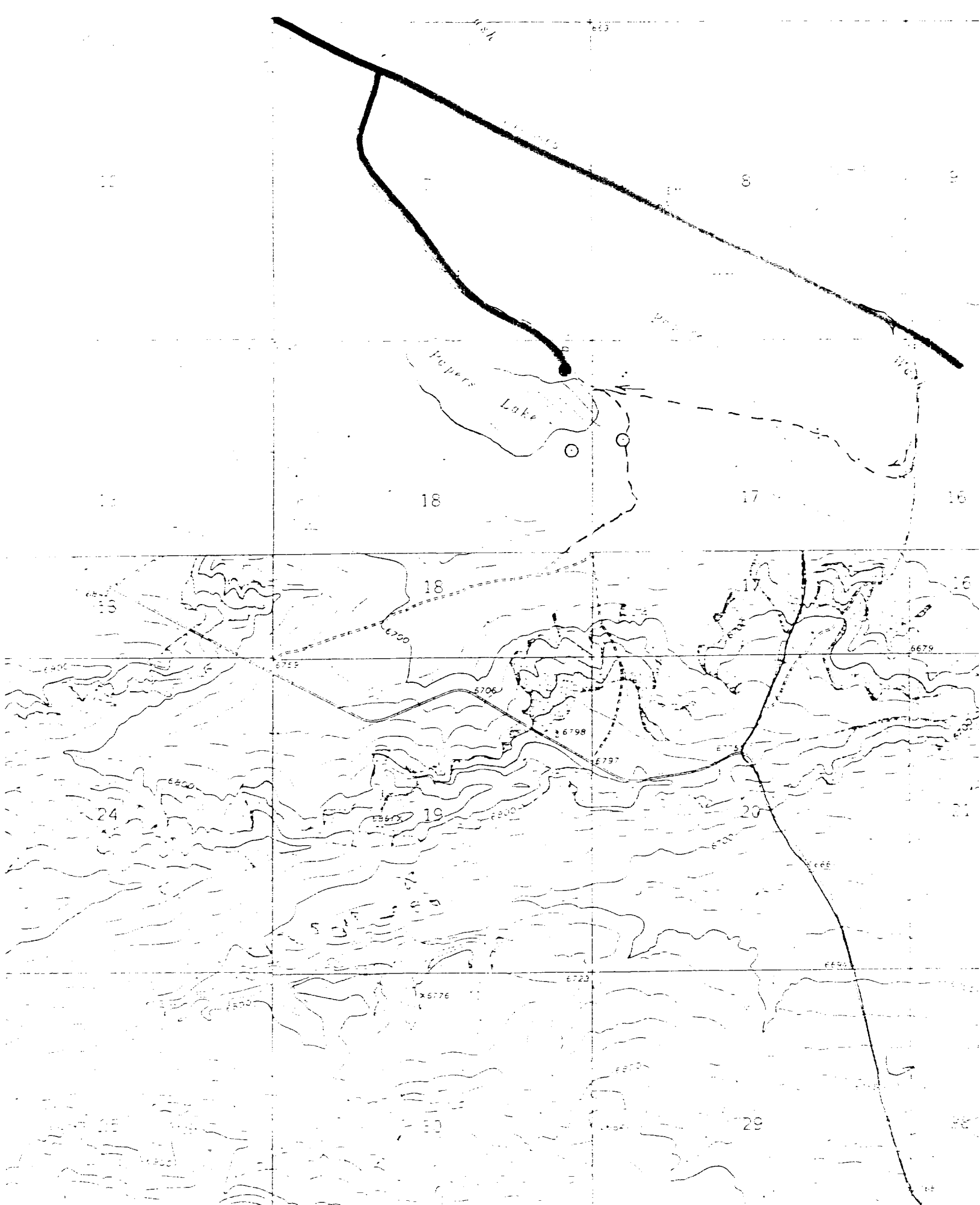
Certification No. 2350

18

RECEIVED

JUN 30 1983

OIL CON. DIV.  
DIST. 3



Vicinity Map for  
JAMES L. LUDWICK #2-18 INDIAN