

OIL CONSERVATION DIVISION

STATE OF NEW MEXICO
ENERGY AND MINERALS DEPARTMENTP. O. BOX 2088
SANTA FE, NEW MEXICO 87501Form C-102
Revised 10-1-78

All distances must be from the outer boundaries of the Section.

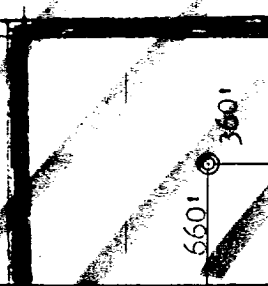
Operator JAMES L. LUDWICK		Lease LUDWICK		Well No. 1	
Unit Letter P	Section 7	Township 19N	Range 5W	County McKinley	
Actual Footage Location of Well: 660 feet from the South line and 360 feet from the East line					
Ground Level Elev. 6508	Producing Formation Point Lookout <i>MV</i>		Pool Undesignated	Dedicated Acreage: 40/160 Acres	

1. Outline the acreage dedicated to the subject well by colored pencil or hatchure marks on the plat below.
2. If more than one lease is dedicated to the well, outline each and identify the ownership thereof (both as to working interest and royalty).
3. If more than one lease of different ownership is dedicated to the well, have the interests of all owners been consolidated by communitization, unitization, force-pooling, etc?

☐ Yes ☐ No If answer is "yes," type of consolidation _____

If answer is "no," list the owners and tract descriptions which have actually been consolidated. (Use reverse side of this form if necessary.) _____

No allowable will be assigned to the well until all interests have been consolidated (by communitization, unitization, forced-pooling, or otherwise) or until a non-standard unit, eliminating such interests, has been approved by the Commission.

<i>In Attachment</i>	Sec.	RECEIVED OCT 21 1983 BUREAU OF LAND MANAGEMENT FORMINGTON RESOURCE AREA 7
	RECEIVED OCT 03 1984 OIL CON. DIV. DIST. 3	

Scale: 1"=1000'

CERTIFICATION

I hereby certify that the information contained herein is true and complete to the best of my knowledge and belief.

Claude C. Kennedy
Name **Claude C. Kennedy**

Position **Agent**

Company **James L. Ludwick**

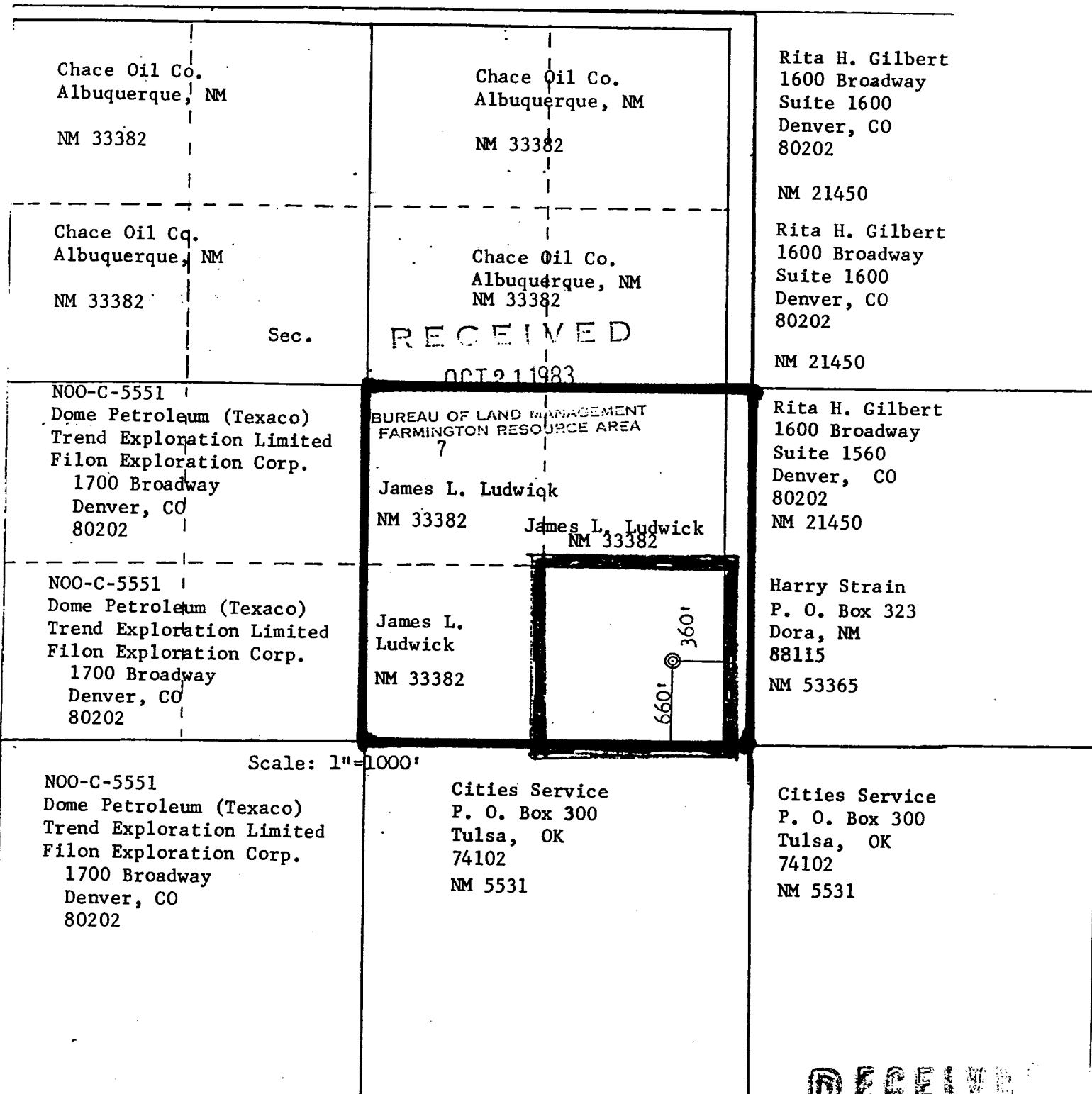
Date **10-20-1983**

I hereby certify that the well location shown on this plat was plotted from field notes of actual surveys made by me or under my supervision, and that the same is true and correct to the best of my knowledge and belief.

Date Surveyed
October 12, 1983

Registered Professional Engineer
and Land Surveyor
Fred B. Kerr Jr.
Fred B. Kerr Jr.

Certificate No. **3950**



Scale: 1"=1000'

RECEIVED

OCT 03 1984

Oil & Gas

6W

6W

19 N

NEW HIGHWAY

PAPERS WASH

ENTRADA OIL

RECEIVED

OCT 03 1984

OIL CON. DIST. 3

DIST. 3

21

5

20

4

19

32

33

7

3

18

12

13

15

14

16

2

1

34

27

25

24

23

22

23

26

28

29

17

31

10

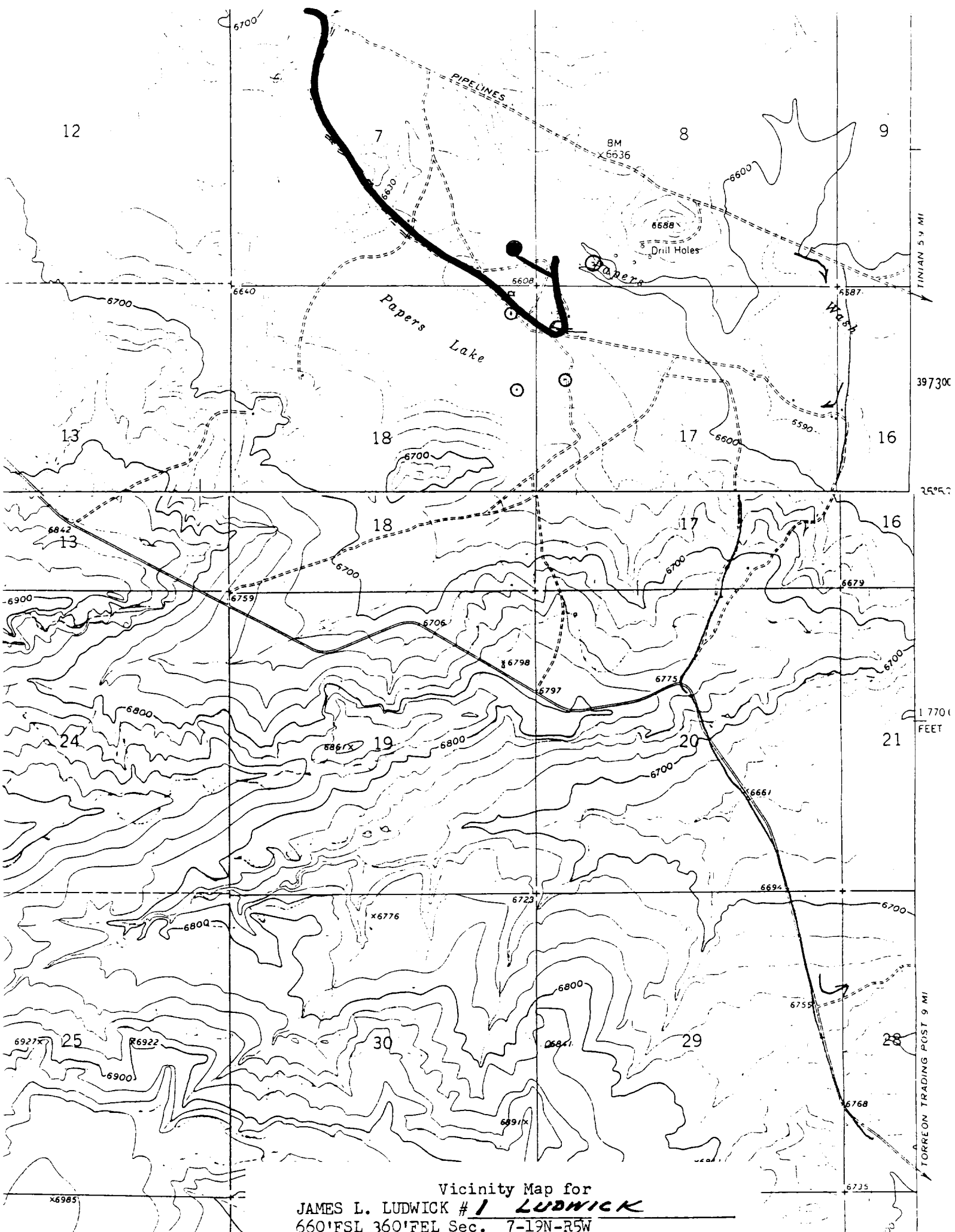
30

IRMA

MCKINLEY COUNTY, NEW MEXICO

LUDWICK

SEC. T19N, R5W



Vicinity Map for
JAMES L. LUDWICK #1 **LUDWICK**
660'FSL 360'FEL Sec. 7-19N-R5W
McKEE COUNTY, NEW MEXICO