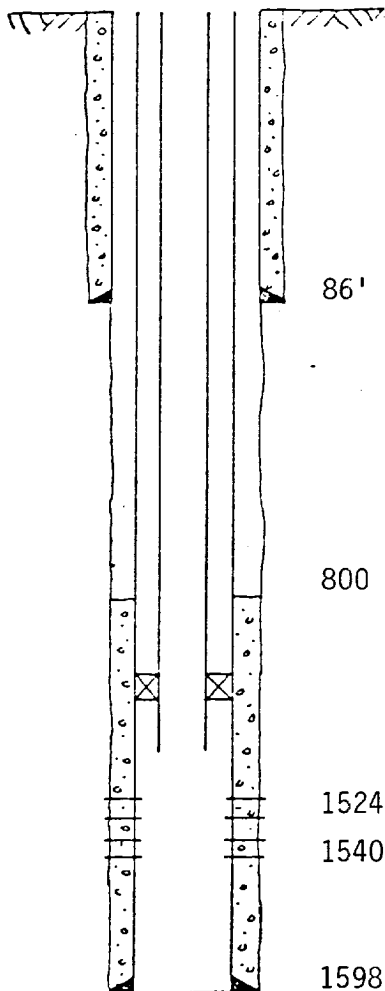


INJECTION WELL DATA SHEET

OPERATOR		LEASE		
Tesoro Petroleum Corporation		Hanson		
WELL NO.	FOOTAGE LOCATION	SECTION	TOWNSHIP	RANGE
43	1260 FSL & 100 FWL	Sec 6-T17N-R8W		

Schematic



Tabular Data

Surface Casing

Size 8 5/8 " Cemented with 60 sx.
 TOC 0 feet determined by Circulation
 Hole size 12 1/4

Intermediate Casing

Size None " Cemented with sx.
 TOC feet determined by
 Hole size

Long string

Size 4 1/2 " Cemented with 100 sx.
 TOC 800 feet determined by Cement Bond Log
 Hole size 6 3/4
 Total depth 1615

Injection interval

1524 feet to 1540 feet
 (perforated or open-hole, indicate which)

Tubing size 2 3/8 lined with None set in a
 (material)

Baker AD-1 (Not completed as injection well yet) packer at feet.
 (brand and model)

(or describe any other casing-tubing seal).

Other Data

- Name of the injection formation Lower Hospah
- Name of Field or Pool (if applicable) South Hospah Lower Sand Oil Pool
- Is this a new well drilled for injection? ☐ Yes ☒ No
 If no, for what purpose was the well originally drilled? Originally drilled as
Lower Hospah Sand producer
- Has the well ever been perforated in any other zone(s)? List all such perforated intervals and give plugging detail (sacks of cement or bridge plug(s) used) None
- Give the depth to and name of any overlying and/or underlying oil or gas zones (pools) in this area. Upper Hospah Oil Sand @ 1450 Ft. Dakota oil & gas sand @ 2500 to
2600 Ft.