

UNITED STATES  
DEPARTMENT OF THE INTERIOR  
BUREAU OF LAND MANAGEMENT

APPLICATION FOR PERMIT TO DRILL, DEEPEN, OR PLUG BACK

1a. TYPE OF WORK DRILL ☒ DEEPEN ☐ PLUG BACK ☐

b. TYPE OF WELL OIL WELL ☒ GAS WELL ☐ OTHER ☐ SINGLE ZONE ☐ MULTIPLE ZONE ☐

2. NAME OF OPERATOR James L. Ludwick 11633

3. ADDRESS OF OPERATOR P. O. Box 70, Farmington, New Mexico 87401

4. LOCATION OF WELL (Report location clearly and in accordance with any State requirements.)\*  
At surface 1935' FNL, 450' FWL

At proposed prod. zone Same

14. DISTANCE IN MILES AND DIRECTION FROM NEAREST TOWN OR POST OFFICE\*  
30 Miles SW Cuba, New Mexico

15. DISTANCE FROM PROPOSED\*  
LOCATION TO NEAREST  
PROPERTY OR LEASE LINE, FT.  
(Also to nearest drig. unit line, if any) 450'

16. NO. OF ACRES IN LEASE  
483.21 603.21

17. NO. OF ACRES ASSIGNED  
TO THIS WELL 41.61

18. DISTANCE FROM PROPOSED LOCATION\*  
TO NEAREST WELL, DRILLING, COMPLETED,  
OR APPLIED FOR, ON THIS LEASE, FT. 1320'

19. PROPOSED DEPTH  
2150' Point Lookout

20. ROTARY OR CABLE TOOLS  
Rotary

21. ELEVATIONS (Show whether DF, RT, OR, FWL) DRILLING OPERATIONS AUTHORIZED ARE  
6637 GR SUBJECT TO COMPLIANCE WITH ATTACHED

22. APPROX. DATE WORK WILL START\*  
Sept. 30, 1984

23. "GENERAL REQUIREMENTS" AND CEMENTING PROGRAM

This action is subject to administrative-  
appeal pursuant to 30 CFR 290.

SIZE OF HOLE	SIZE OF CASING	WEIGHT PER FOOT	SETTING DEPTH	QUANTITY OF CEMENT
8 3/4	7	24	200	35 cu. ft.
6 1/4	4 1/2	9.5	2200	250 cu. ft.

SEE NTL-6 ATTACHMENTS

Gas is not dedicated

RECEIVED  
OCT 16 1984  
OIL CON. DIV.  
DIST. 3

IN ABOVE SPACE DESCRIBE PROPOSED PROGRAM: If proposal is to deepen or plug back, give data on present productive zone and proposed new productive zone. If proposal is to drill or deepen directionally, give pertinent data on subsurface locations and measured and true vertical depths. Give blowout preventer program, if any.

24. SIGNED Shirley Carham TITLE Agent

(This space for Federal or State office use)

PERMIT NO. APPROVAL DATE

APPROVED BY TITLE  
CONDITIONS OF APPROVAL, IF ANY:

chd

NMOCC

\*See Instructions On Reverse Side

8/28/84  
APPROVED  
AS AMENDED  
OCT 12 1984  
FOR AREA MANAGER  
FARMINGTON RESOURCE AREA

All distances must be from the outer boundaries of the Section.

Operator <b>JAMES L. LUDWICK</b>		Lease <b>LUDWICK</b>		Well No. <b>3</b>
Unit Letter <b>E</b>	Section <b>7</b>	Township <b>19N</b>	Range <b>5W</b>	County <b>McKinley</b>
Actual Footage Location of Well: <b>1935</b> feet from the <b>North</b> line and <b>450</b> feet from the <b>West</b> line				
Ground Level Elev: <b>6637</b>	Producing Formation <b>MU</b>	Pool <b>Unles</b>	Dedicated Acreage: <b>41.61</b> Acres	

1. Outline the acreage dedicated to the subject well by colored pencil or hachure marks on the plat below.
2. If more than one lease is dedicated to the well, outline each and identify the ownership thereof (both as to working interest and royalty).
3. If more than one lease of different ownership is dedicated to the well, have the interests of all owners been consolidated by communitization, unitization, force-pooling, etc?

☐ Yes ☐ No If answer is "yes," type of consolidation \_\_\_\_\_

If answer is "no," list the owners and tract descriptions which have actually been consolidated. (Use reverse side of this form if necessary.) \_\_\_\_\_

No allowable will be assigned to the well until all interests have been consolidated (by communitization, unitization, forced-pooling, or otherwise) or until a non-standard unit, eliminating such interests, has been approved by the Commission.

1935'	450'	Sec.	7	RECEIVED OCT 16 1984 OIL CON. DIV. DIST. 3

CERTIFICATION

I hereby certify that the information contained herein is true and complete to the best of my knowledge and belief.

Sandy Durham

Name  
Agent

Position  
James L. Ludwick

Company  
August 28, 1984

Date

I hereby certify that the well location shown on this plat was plotted from field notes of actual surveys made by me or under my supervision, and that the same is true and correct to the best of my knowledge and belief.

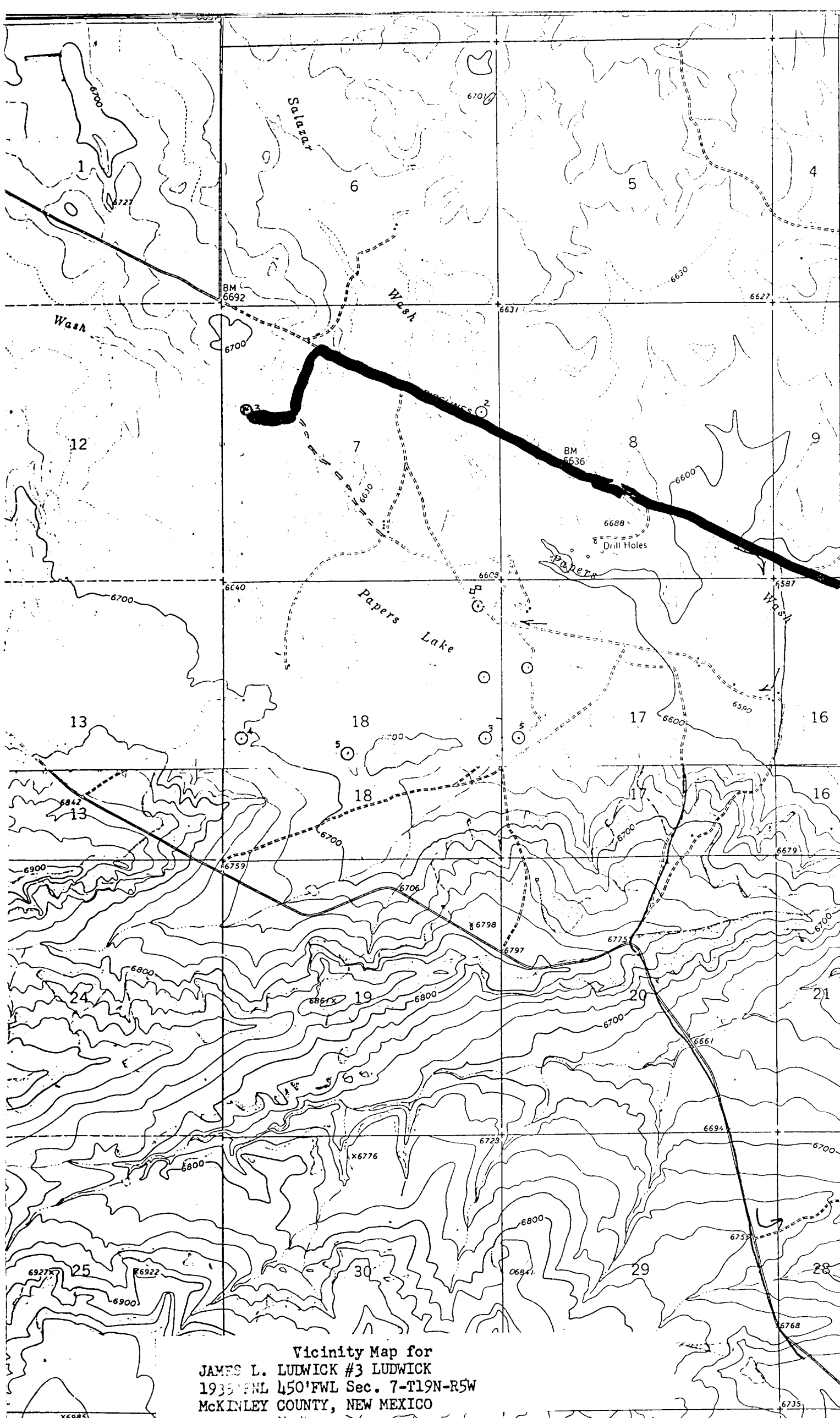
Date Surveyed  
August 27, 1984

Registered Professional Engineer  
and Land Surveyor

Fred B. Kerr Jr.

Certificate No. 4222 N.M.

3950



Vicinity Map for  
JAMES L. LUDWICK #3 LUDWICK  
1935 FNL 450'FWL Sec. 7-T19N-R5W  
McKINLEY COUNTY, NEW MEXICO