

UNITED STATES
DEPARTMENT OF THE INTERIOR
BUREAU OF LAND MANAGEMENT

APPLICATION FOR PERMIT TO DRILL, DEEPEN, OR PLUG BACK

1a. TYPE OF WORK

DRILL ☒

DEEPEN ☐

PLUG BACK ☐

b. TYPE OF WELL

OIL
WELL ☒

GAS
WELL ☐

OTHER ☐

SINGLE
ZONE ☒

MULTIPLE
ZONE ☐

2. NAME OF OPERATOR

Merrion Oil & Gas Corporation

3. ADDRESS OF OPERATOR

P. O. Box 840, Farmington, New Mexico 87499

4. LOCATION OF WELL (Report location clearly and in accordance with any State requirements.)

At surface 510' FNL and 465' FWL

At proposed prod. zone

Same

14. DISTANCE IN MILES AND DIRECTION FROM NEAREST TOWN OR POST OFFICE

21 miles S. of Ojo Encino

15. DISTANCE FROM PROPOSED*

LOCATION TO NEAREST
PROPERTY OR LEASE LINE, FT.
(Also to nearest drlg. unit line, if any)

465'

16. NO. OF ACRES IN LEASE

2160

17. NO. OF ACRES ASSIGNED
TO THIS WELL

40

18. DISTANCE FROM PROPOSED LOCATION*

TO NEAREST WELL, DRILLING, COMPLETED,
OR APPLIED FOR, ON THIS LEASE, FT.

1200'

19. PROPOSED DEPTH

3160

20. ROTARY OR CABLE TOOLS

0 - TD

21. ELEVATIONS (Show whether DF, RT, GR, etc.)

6835' GL

23.

22. APPROX. DATE WORK WILL START*

This action is subject to technical and
procedural review pursuant to 43 CFR 3165.3
and appeal pursuant to 43 CFR 3165.4.

SIZE OF HOLE	SIZE OF CASING	WEIGHT PER FOOT	SETTING DEPTH	QUANTITY OF CEMENT
12-1/4"	8-5/8", J-55	23 #/ft.	100	80 sx Class B, 2% CaCl2 (94.4)
7-7/8"	5-1/2", K-55	14 #/ft.	3160	150 sx Class B 2% D-79 (309)
	5 1/2"			200 sx Class H 2% gel (244)

Drill Mesaverde test to 3160'. Will set 8-5/8", 23 #/ft. J-55 surface casing at 100 ft. with 80 sx Class B 2% CaCl2 (94.4 cu. ft.). Drill 7-7/8" hole to TD. Will run 5-1/2", 14 #/ft, K-55 to TD and single stage cement with 150 sx Class B 2% D-79 (309 cu. ft.) followed by 200 sx Class H 2% gel (244 cu. ft.). Estimated top of cement - surface.

Perforate and stimulate as necessary to test Mesaverde.

Pressure control will be 2000 PSI bag type blowout preventer.

Drilling circulating medium will be low solids, non-dispersed, low water loss mud using bentonite, starch, CMC and fresh water.

IN ABOVE SPACE DESCRIBE PROPOSED PROGRAM: If proposal is to deepen or plug back, give data on present productive zone and proposed new productive zone. If proposal is to drill or deepen directionally, give pertinent data on subsurface locations and measured and true vertical depths. Give blowout preventer program, if any.

24.

SIGNATURE

TITLE Operations Manager

DATE 11/20/85

(This space for Federal or State office use)

PERMIT NO.

APPROVAL DATE

APPROVED
AS AMENDED

APPROVED BY

TITLE

DATE DEC 20 1985

CONDITIONS OF APPROVAL, IF ANY:

/s/ J. Stan McKee

M. MILLENBACH
AREA MANAGER

NMOCC

*See Instructions On Reverse Side

Title 18 U.S.C. Section 1001, makes it a crime for any person knowingly and willfully to make to any department or agency of the United States any false, fictitious or fraudulent statements or representations as to any matter within its jurisdiction.

RECEIVED

U.S. DEPARTMENT OF AGRICULTURE
WASHINGTON, D.C.

NEW MEXICO OIL CONSERVATION COMMISSION
WELL LOCATION AND ACREAGE DEDICATION PLAT

Form C-102
Supersedes C-128
Effective 1-1-85

All distances must be from the outer boundaries of the Section

Operator MERRION OIL & GAS CORPORATION			Lease POT MESA		Well No. 7
Unit Letter D	Section 10	Township 20N	Range 6W	County McKinley	
Actual Footage Location of Well: 510 feet from the North line and 465 feet from the West line					
Ground Level Elev: 6835	Producing Formation Mesaverde		Pool Wildcat Mesaverde		Dedicated Acreage: 40 Acres

1. Outline the acreage dedicated to the subject well by colored pencil or hatchure marks on the plat below.
2. If more than one lease is dedicated to the well, outline each and identify the ownership thereof (both as to working interest and royalty).
3. If more than one lease of different ownership is dedicated to the well, have the interests of all owners been consolidated by communitization, unitization, force-pooling, etc?

☐ Yes ☐ No If answer is "yes," type of consolidation _____

If answer is "no," list the owners and tract descriptions which have actually been consolidated. (Use reverse side of this form if necessary.) _____

No allowable will be assigned to the well until all interests have been consolidated (by communitization, unitization, forced-pooling, or otherwise) or until a non-standard unit, eliminating such interests, has been approved by the Commission.

		<p align="center">RECEIVED</p> <p align="center">DEC 12 1985</p> <p align="center">BUREAU OF LAND MANAGEMENT FARMINGTON RESOURCE AREA</p>
<p align="center">Sec.</p> <p align="center">10</p>		

CERTIFICATION

I hereby certify that the information contained herein is true and complete to the best of my knowledge and belief.

Name
Steve S. Dunn
Position
Operations Manager
Company
Merrion Oil & Gas Corporation
Date
11/14/85

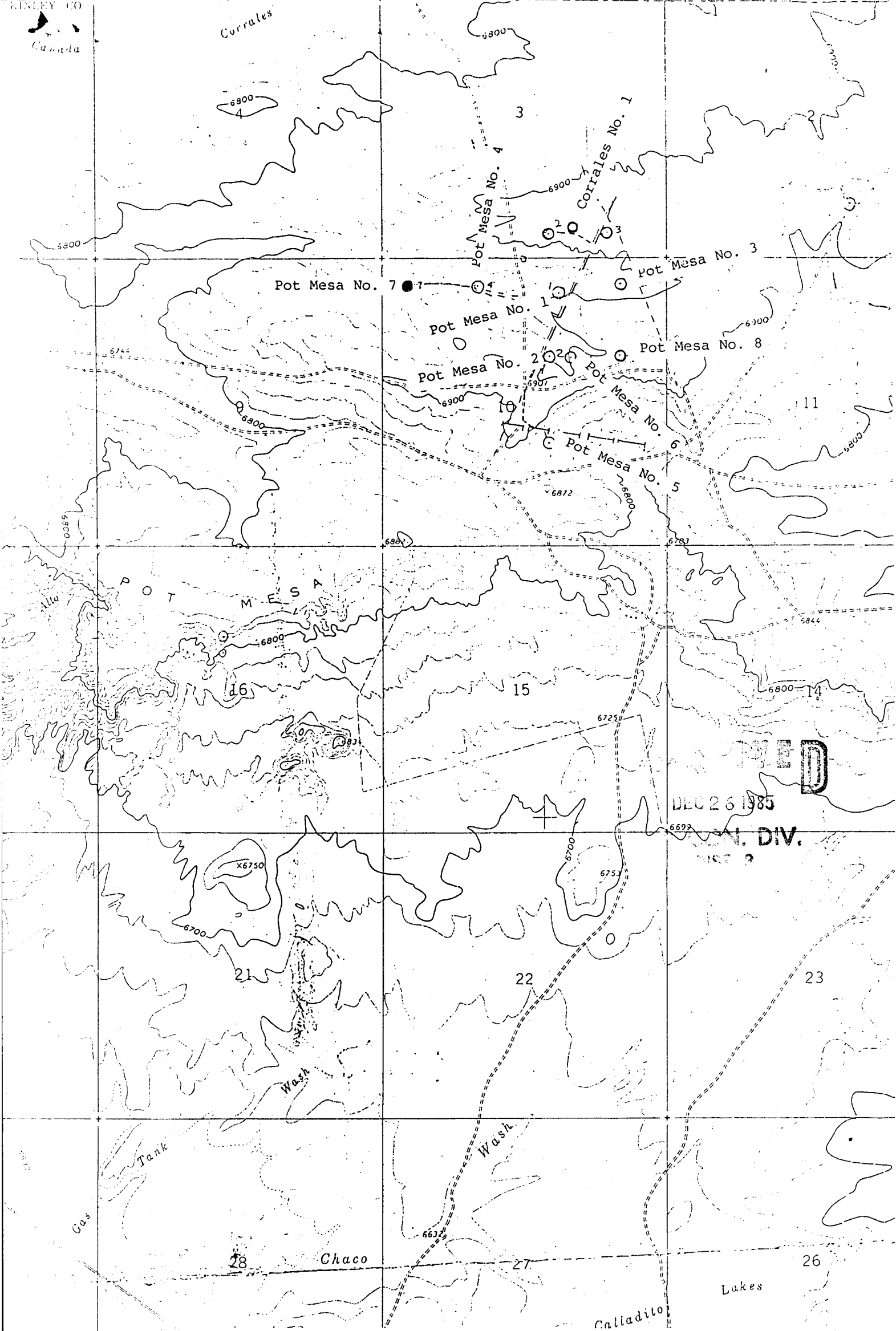
I hereby certify that the well location shown on this plat was plotted from field notes of actual surveys made by me or under my supervision, and that the same is true and correct to the best of my knowledge and belief.

Date Surveyed
November 12, 1985
Registered Professional Engineer and Land Surveyor
Fred B. Kerr Jr.
Certificate No.
3950

Scale: 1"=1000'

RECEIVED

NOV 19 1964



DEC 26 1985
N. DIV.
1000

Vicinity Map for
MERRION OIL & GAS CORP. #7 POT MESA
510'FNL 465'FWL Sec. 10-T20N-R6W
McKINLEY COUNTY, NEW MEXICO

BM 665

