

UNITED STATES
DEPARTMENT OF THE INTERIOR
BUREAU OF LAND MANAGEMENT

3. LEASE DESIGNATION AND SERIAL NO.

APPLICATION FOR PERMIT TO DRILL, DEEPEN, OR PLUG BACK

NM 53926
6. IF INDIAN, ALLOTTEE OR TRIBE NAME

7. UNIT AGREEMENT NAME

8. FARM OR LEASE NAME

Corrales
9. WELL NO.

10. FIELD AND POOL, OR WILDCAT

Franciscan Lake
11. SEC., T., R., M., OR BLK.
AND SURVEY OR AREA

Sec. 3, T20N, R6W

12. COUNTY OR PARISH 13. STATE
McKinley New Mexico

17. NO. OF ACRES ASSIGNED
TO THIS WELL 40

20. ROTARY OR CABLE TOOLS
Rotary

22. APPROX. DATE WORK WILL START*
Winter, 1986

This action is subject to technical and
procedural review pursuant to 43 CFR 3165.3
and appeal pursuant to 43 CFR 3165.4.

QUANTITY OF CEMENT
80 sx (94.4) Class B 2% CaCl2
350 sx (as below)

D. TYPE OF WELL

OIL
WELL ☒

GAS
WELL ☐

OTHER

SINGLE
ZONE ☒

MULTIPLE
ZONE ☐

2. NAME OF OPERATOR

Merrion Oil & Gas Corporation

3. ADDRESS OF OPERATOR

P. O. Box 840, Farmington, New Mexico 87499

4. LOCATION OF WELL (Report location clearly and in accordance with applicable requirements)
At surface

465' FSL and 2300' FWL

At proposed prod. zone

Same

14. DISTANCE IN MILES AND DIRECTION FROM NEAREST TOWN OR POST OFFICE*

21 miles S. of Counselors

BUREAU OF LAND MANAGEMENT
FARMINGTON RESOURCE AREA

15. DISTANCE FROM PROPOSED*

LOCATION TO NEAREST
PROPERTY OR LEASE LINE, FT.
(Also to nearest drlg. unit line, if any)

465'

16. NO. OF ACRES IN LEASE

1565.56

18. DISTANCE FROM PROPOSED LOCATION*
TO NEAREST WELL, DRILLING, COMPLETED,
OR APPLIED FOR, ON THIS LEASE, FT.

1000'

19. PROPOSED DEPTH

3216'

21. ELEVATIONS (Show whether DF, RT, or

6901' GL

DRILLING OPERATIONS AUTHORIZED ARE
SUBJECT TO COMPLIANCE WITH ATTACHED
"GENERAL REQUIREMENTS AND CEMENTING PROGRAM"

23. PROPOSED PROGRAM

SIZE OF HOLE	SIZE OF CASING	WEIGHT PER FOOT	SETTING DEPTH
12-1/4"	8-5/8", J-55	23 #/ft.	100 ft.
7-7/8"	5-1/2", K-55	14 #/ft.	3216 ft.

Drill Mesaverde test to 3216'. Will set 8-5/8", 23 #/ft. J-55 surface casing at 100 ft. with 80 sx Class B 2% CaCl2 (94.4 cu. ft.). Drill 7-7/8" hole to TD. Will run 5-1/2", 14 #/ft. K-55 to TD and single stage cement with 150 sx Class B 2% D-79 (309 cu. ft.) followed by 200 sx Class H 2% gel (244 cu. ft.). Estimated top of cement - surface. Perforate and stimulate as necessary to test Mesaverde. Pressure control will be 2000 PSI bag type blowout preventer. Drilling circulating medium will be low solids, non-dispersed, low water loss mud using bentonite, starch, CMC and fresh water.

Est. tops on back.

IN ABOVE SPACE DESCRIBE PROPOSED PROGRAM: If proposal is to deepen or plug back, give data on present productive zone and proposed new productive zone. If proposal is to drill or deepen directionally, give pertinent data on subsurface locations and measured and true vertical depths. Give blowout preventer program, if any.

24.

SIGNED

Operations Manager

DATE 11/25/85

(This space for Federal or State office use)

APPROVED
AS AMENDED

PERMIT NO.

JAN 02 1986

APPROVAL DATE

APPROVED BY

CONDITIONS OF APPROVAL, IF ANY:

OIL CON. DIV.
DIST. 3

TITLE

DATE

7/8/J. Stan McKee

M. MILLENBACH
AREA MANAGER

NMOCC

*See Instructions On Reverse Side

RECEIVED

1961

THE UNIVERSITY OF CHICAGO
LIBRARY

1961

1961

$$\begin{aligned} \text{Upper } \alpha &= 1 - \beta \\ \text{Superscore } \alpha &= (1 - \beta) / 2 \\ \text{Lower } \alpha &= \beta / 2 \end{aligned}$$

Operator MIDCON OIL FIELD CO.		Lease 30-00000		Well No. 2	
Unit Letter N	Section 3	Township 20N	Range 6W	County McKinley	
Actual Footage Location of Well: 465 feet from the South line and 2300 feet from the West line					
Ground Level Elev: 6901	Producing Formation Mesaverde	Pool Franciscan Lake Mesaverde EXT	Dedicated Acreage: 40 Acres		

- No allowable will be assigned to the well until all interests have been consolidated (by communitization, unitization, forced-pooling, or otherwise) or until a non-standard unit, eliminating such interests, has been approved by the Commission.

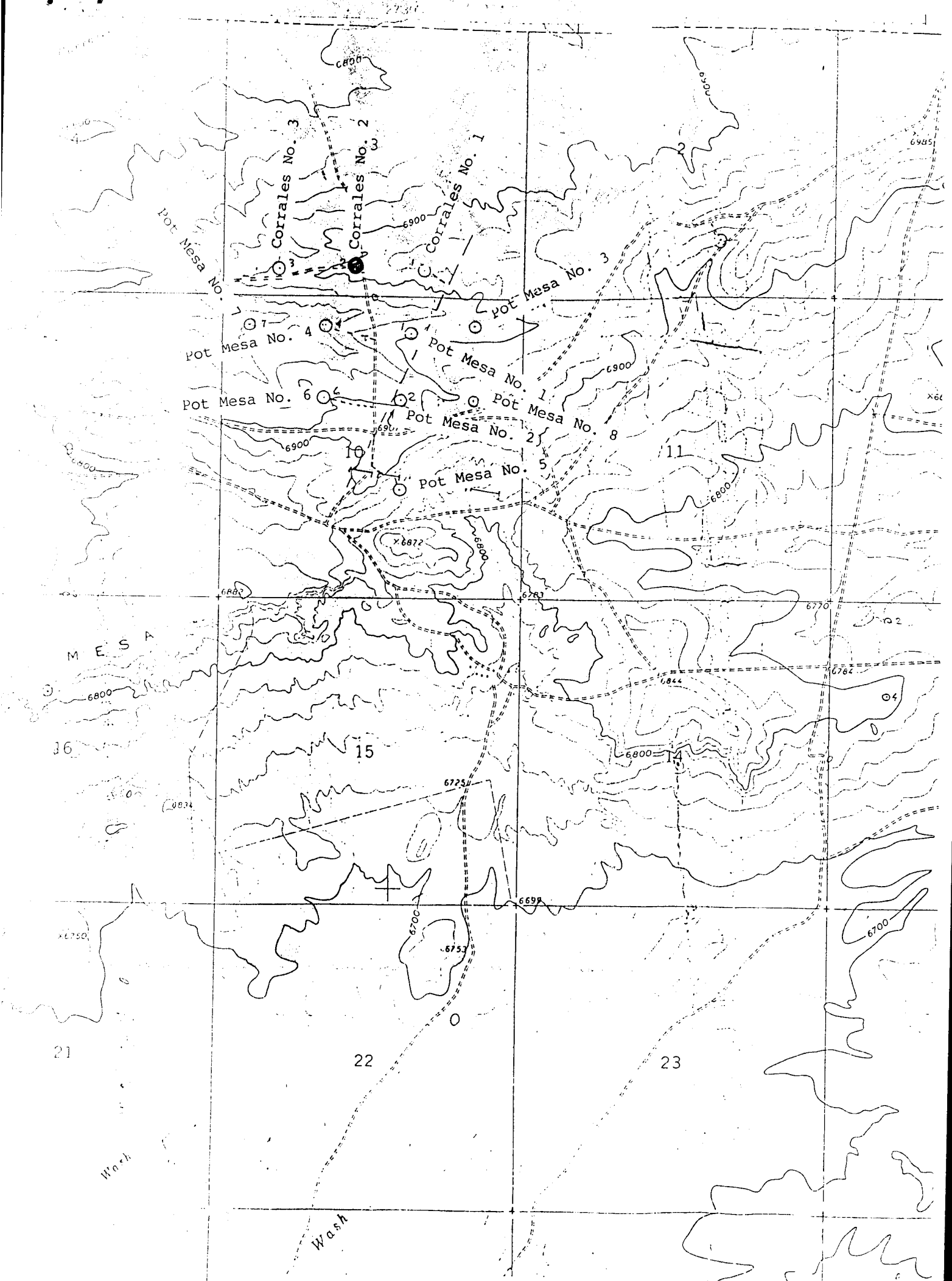
3950

597

Scale: 1"=1000'

00V1079

10/10/1979
10/10/1979
10/10/1979
10/10/1979



Vicinity Map for
 MERRION OIL & GAS CORP. #2 CORRALES
 465' FSL 2300' FWL Sec. 3-T20N-R6W
 MCKINLEY COUNTY, NEW MEXICO

