

UNITED STATES
DEPARTMENT OF THE INTERIOR
GEOLOGICAL SURVEY

APPLICATION FOR PERMIT TO DRILL, DEEPEN, OR PLUG BACK

1a. TYPE OF WORK
DRILL ☒ DEEPEN ☐ PLUG BACK ☐

b. TYPE OF WELL
OIL WELL ☒ GAS WELL ☐ OTHER ☐

2. NAME OF OPERATOR
BLACK OIL, INC.

3. ADDRESS OF OPERATOR
P.O. BOX 537, FARMINGTON, NM 87499

4. LOCATION OF WELL (Report location clearly and in accordance with any State requirements.)
At surface 950' FSL & 910' FWL
At proposed prod. zone SAME

14. DISTANCE IN MILES AND DIRECTION FROM NEAREST TOWN OR POST OFFICE*
25 MILES NORTH OF CROWNPOINT, NEW MEXICO

15. DISTANCE FROM PROPOSED* LOCATION TO NEAREST PROPERTY OR LEASE LINE, FT. 910' WEST
(Also to nearest drg. unit line, if any)

16. NO. OF ACRES IN LEASE
160

17. NO. OF ACRES ASSIGNED TO THIS WELL
40

18. DISTANCE FROM PROPOSED LOCATION* TO NEAREST WELL, DRILLING, COMPLETED, OR APPLIED FOR, ON THIS LEASE, FT. 800' SW

19. PROPOSED DEPTH
2,300'

20. ROTARY OR CABLE TOOLS
ROTARY

21. ELEVATIONS (Show whether DF, RT, GR, etc.)
6145 GR

22. APPROX. DATE WORK WILL START*
OCTOBER 10, 1987

23. This action is subject to technical and procedural review pursuant to 43 CFR 3185.3 and appeal pursuant to 43 CFR 3185.4.

24. DRILLING OPERATIONS AUTHORIZED ARE SUBJECT TO COMPLIANCE WITH ATTACHED GENERAL REQUIREMENTS

SIZE OF HOLE	SIZE OF CASING	WEIGHT PER FOOT	SETTING DEPTH	GENERAL REQUIREMENTS
12-1/4	8-5/8	24# J-55	200'	165 CU.FT. CLASS B CIRC. TO SURF.
7-7/8	5-1/2	15.5# J-55	2300'	637 CU.FT. CLASS B CIRC. TO SURF.
				1.18 CU.FT./SACK, 100% EXCESS ON SURFACE CASING AND 60% ON PROD. CASING, AT 1.83 CU.FT./SACK.

WILL DRILL 12-1/4" HOLE TO 200' AND SET 200' OF 8-5/8" 24# J-55 CASING, CEMENTED WITH 165 CU.FT. OF CLASS B CEMENT, CIRCULATED TO SURFACE. WILL DRILL 7-7/8" HOLE TO 2300' AND SET 2300' OF 5-1/2" 15.5# J-55 CASING AND CEMENT WITH 637 CU.FT. OF CLASS B. CEMENT CIRCULATED TO SURFACE. CIRCULATING MEDIUM WILL BE WITH CLEAR WATER, NATURAL MUD AND WATER LOSS CONTROL ADDITIVES. NO ABNORMAL PRESSURES OR TEMPERATURES ARE ANTICIPATED. NO GAS IS PRESENT IN PRODUCING WELLS NEARBY. WILL RUN INDUCTION AND DENSITY LOGS. BLOWOUT PREVENTER SCHEMATIC IS ATTACHED; WILL USE A 3000 PSI RATED REAGAN BLATTER TYPE ANNULAR PREVENTOR. A GOOD SUPPLY OF MUD WILL BE ON HAND TO CONTROL WELL AS NEEDED.

ESTIMATED TOPS: SURFACE FORMATION - CLAYS AND SAND {MENEFEES}
POINT LOOKOUT - 1060'
TOP MANCOS - 1200'
HOSPAH - 2065'
OIL SAND - 2180'

IN ABOVE SPACE DESCRIBE PROPOSED PROGRAM: If proposal is to deepen or plug back, give data on present productive zone and proposed new productive zone. If proposal is to drill or deepen directionally, give pertinent data on subsurface locations and measured and true vertical depths. Give blowout preventer program, if any.

24. SIGNED Sam Blush TITLE PRESIDENT DATE SEPT. 8, 1987

(This space for Federal or State office use)

PERMIT NO. _____ APPROVED DATE MAY 7 1988

APPROVED BY _____ TITLE _____

CONDITIONS OF APPROVAL, IF ANY:

*See Instructions On Reverse Side

NMOCC

AREA MANAGER

**NEW MEXICO OIL CONSERVATION COMMISSION
WELL LOCATION AND ACREAGE DEDICATION PLAT**

Form C-102
Supersedes C-128
Effective 1-1-65

All distances must be from the outer boundaries of the Section.

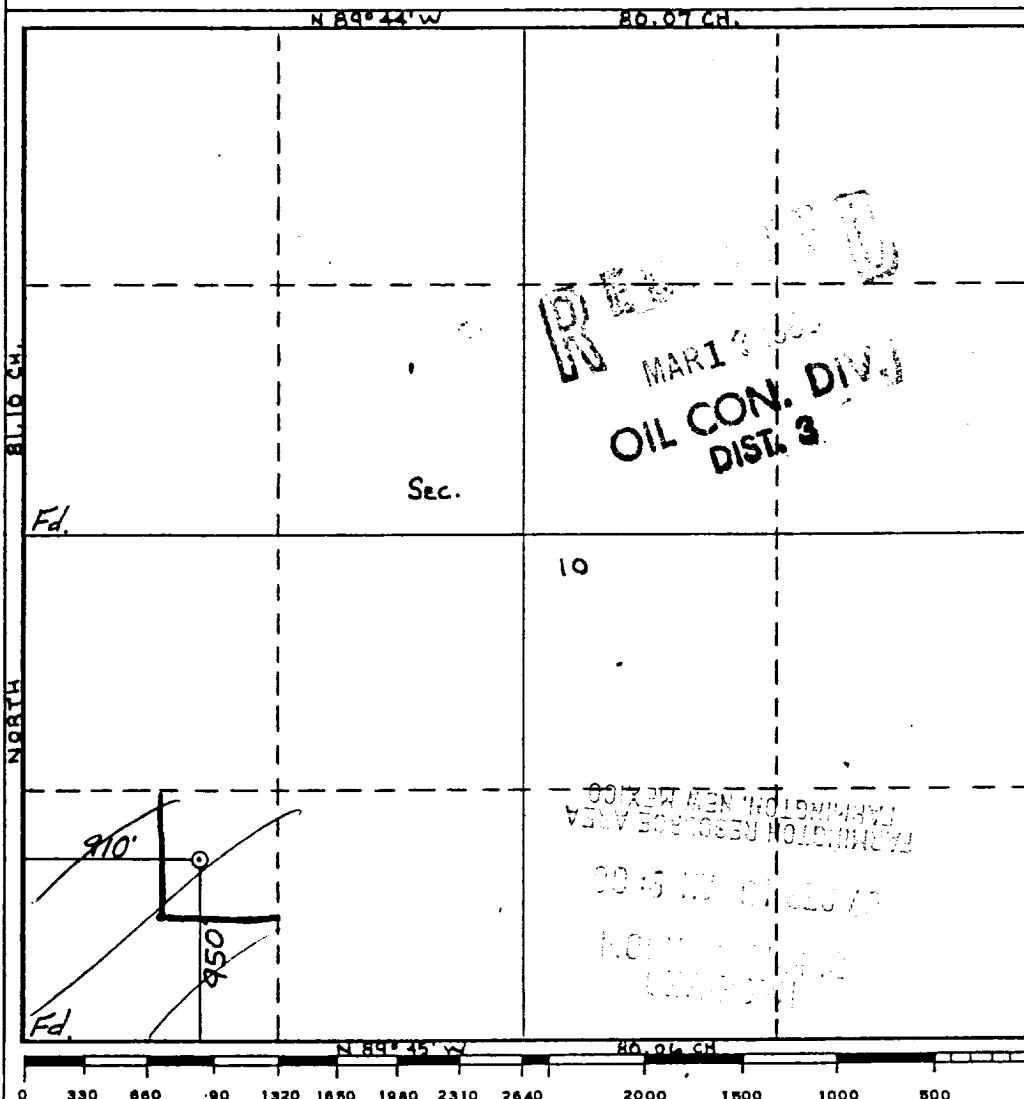
Operator BLACK OIL, INC.			Lease SALAZAR NAVAJO CITO		Well No. 4
Unit Letter M	Section 10	Township 20 N	Range 12 W	County McKinley	
Actual Footage Location of Well: <div style="display: flex; justify-content: space-between;"> 950 feet from the South line and 910 feet from the West line </div>					
Ground Level Elev. 6145	Producing Formation HOSPAH SAND	Pool NOSE ROCK - HOSPAH EXT.		Dedicated Acreage: 40 <i>FT W, 1, 2, 3</i> Acres	

1. Outline the acreage dedicated to the subject well by colored pencil or hachure marks on the plat below.
2. If more than one lease is dedicated to the well, outline each and identify the ownership thereof (both as to working interest and royalty).
3. If more than one lease of different ownership is dedicated to the well, have the interests of all owners been consolidated by communitization, unitization, force-pooling, etc?

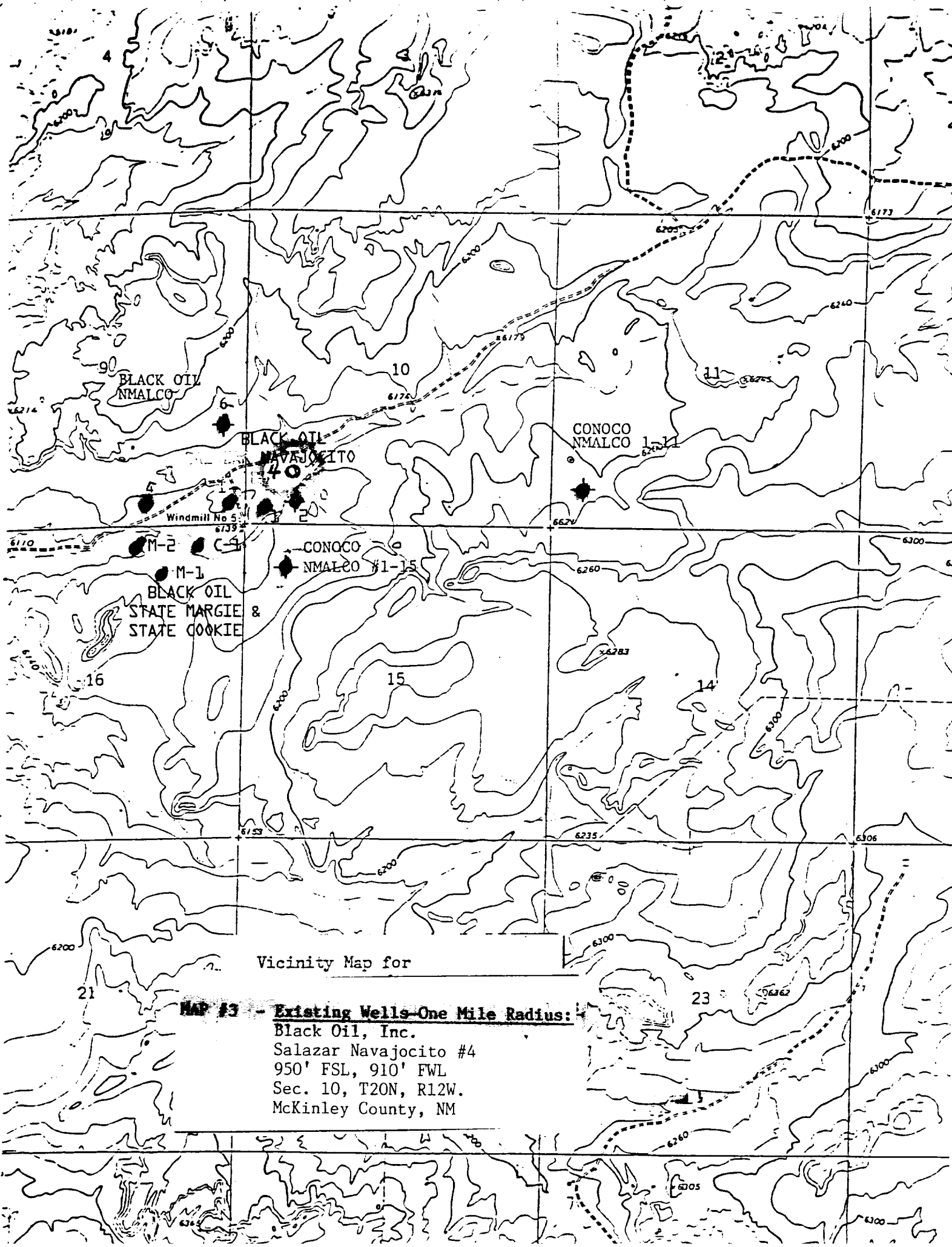
☐ Yes ☐ No If answer is "yes," type of consolidation _____

If answer is "no," list the owners and tract descriptions which have actually been consolidated. (Use reverse side of this form if necessary.) _____

No allowable will be assigned to the well until all interests have been consolidated (by communitization, unitization, forced-pooling, or otherwise) or until a non-standard unit, eliminating such interests, has been approved by the Commission.



CERTIFICATION	
I hereby certify that the information contained herein is true and complete to the best of my knowledge and belief.	
Name	<i>Mike Moloney</i>
Position	<i>Agent</i>
Company	<i>Black Oil Line</i>
Date	<i>9-30-87</i>
I hereby certify that the well location shown on this plat was plotted from field notes of actual surveys made by me or under my supervision, and that the same is true and correct to the best of my knowledge and belief.	
Date Surveyed	<i>WILLIAM E. MAHONEY</i>
Registered Professional Engineer and/or Land Surveyor	<i>#8466</i>
Certificate No.	<i>8466</i>



Vicinity Map for

MAP #3 - Existing Wells One Mile Radius:

Black Oil, Inc.
Salazar Navajocito #4
950' FSL, 910' FWL
Sec. 10, T20N, R12W.
McKinley County, NM