

UNITED STATES
DEPARTMENT OF THE INTERIOR
GEOLOGICAL SURVEY

APPLICATION FOR PERMIT TO DRILL, DEEPEN, OR PLUG BACK

1a. TYPE OF WORK
DRILL ☒ DEEPEN ☐ PLUG BACK ☐

b. TYPE OF WELL
OIL WELL ☒ GAS WELL ☐ OTHER ☐ SINGLE ZONE ☐ MULTIPLE ZONE ☐

2. NAME OF OPERATOR
GURLEY OIL COMPANY 9536

3. ADDRESS OF OPERATOR
P. O. Box 2092, Farmington, NM 87499

4. LOCATION OF WELL (Report location clearly and in accordance with any State requirements.)
At surface 330' FSL and 990' FWL
At proposed prod. zone Same

14. DISTANCE IN MILES AND DIRECTION FROM NEAREST TOWN OR POST OFFICE*
22 miles north of Crownpoint, NM

10. DISTANCE FROM PROPOSED* LOCATION TO NEAREST PROPERTY OR LEASE LINE, FT. (Also to nearest drlg. unit line, if any)
330' FSL

16. NO. OF ACRES IN LEASE
640

17. NO. OF ACRES ASSIGNED TO THIS WELL
40

18. DISTANCE FROM PROPOSED LOCATION* TO NEAREST WELL, DRILLING, COMPLETED, OR APPLIED FOR, ON THIS LEASE, FT.
660'

19. PROPOSED DEPTH
+ 2300'

20. ROTARY OR CABLE TOOLS
Rotary

21. ELEVATIONS (Show whether DF, RT, GR, etc.)
6141 GR

22. APPROX. DATE WORK WILL START*
May 1, 1991

23. and appeal pursuant to 43 CFR 3165.4

24. DRILLING OPERATIONS AUTHORIZED ARE SUBJECT TO COMPLIANCE WITH ATTACHED "GENERAL REQUIREMENTS"

SIZE OF HOLE	SIZE OF CASING	WEIGHT PER FOOT	SETTING DEPTH	QUANTITY OF CEMENT
8-3/4"	7" ST&C	23# K-55	+ 120'	40 cu. ft. Class B Neat
6-1/4"	4-1/2" ST&C	10.5# K-55	+ 2300'	378 cu. ft. Class B Neat

We propose to drill a 8-3/4" hole to 120' and set 120' of 7" 23#/ft K-55 used casing, cemented with 40 cu ft, Class B cement, circulated to surface. We will drill a 6-1/4" hole to 2300'. We will run induction and density logs, if oil sands are present we will run 2300' of 4-1/2" 10.5#/ft. used casing cemented with 378 cu.ft. of Class B cement circulated to surface.

Circulating medium will be clear water, natural mud and water loss control additives. Unlined earth pits will be used. No abnormal pressures or temperatures are anticipated. A good supply of mud will be on hand to control the well as needed. Blow-out preventor schematic is attached. We will use a 2000 psi WP annular blow out preventor. A Upper Kelly cock valve (with handle available) will be used. Safety valve and subs to fit all drill strings will be on the rig floor. Choke manifold equipment will be of the 2000 psi configuration. Estimated Formation Tops: Surface Formation: Clays and Sand (Menefee); Point Lookout: 1060'; Top Mancos: 1200'; Hospah: 2060'; Oil Sand: 2175'. Centralizers, Surface casing: one on shoe joint, one at 60', one at the bottom of cellar. Production casing shall have centralizers across, any oil and water zones.

IN ABOVE SPACE DESCRIBE PROPOSED PROGRAM: If proposal is to deepen or plug back, give data on present productive zone and proposed new productive zone. If proposal is to drill or deepen directionally, give pertinent data on subsurface locations and measured and true vertical depths. Give blowout preventer program, if any.

24. SIGNED L. Mike Maloney TITLE Manager DATE 3-7-91
(This space for Federal or State office use)

PERMIT NO. _____ APPROVAL DATE _____
APPROVED BY _____ TITLE _____
CONDITIONS OF APPROVAL, IF ANY:

NMOOD

APPROVED
AS ATTACHEDMAY 1 1991
AREA MANAGER

Instructions

General: This form is designed for submitting proposals to perform certain well operations, as indicated, on all types of lands and leases for appropriate action by either a Federal or a State agency, or both, pursuant to applicable Federal and/or State laws and regulations. Any necessary special instructions concerning the use of this form and the number of copies to be submitted, particularly with regard to local, area, or regional procedures and practices, either are shown below or will be issued by, or may be obtained from, the local Federal and/or State office.

Item 1: If the proposal is to redrill to the same reservoir at a different subsurface location or to a new reservoir, use this form with appropriate notations. Consult applicable State or Federal regulations concerning subsequent work proposals or reports on the well.

Item 4: If there are no applicable State requirements, locations on Federal or Indian land should be described in accordance with Federal requirements. Consult local State or Federal office for specific instructions.

Item 14: Needed only when location of well cannot readily be found by road from the land or lease description. A plat, or plats, separate or on this reverse side, showing the roads to, and the surveyed location of, the well, and any other required information, should be furnished when required by Federal or State agency offices.

Items 15 and 18: If well is to be, or has been directionally drilled, give distances for subsurface location of hole in any present or objective production zone.

Item 22: Consult applicable Federal or State regulations, or appropriate officials, concerning approval of the proposal before operations are started.

Submit to Appropriate
District Office
State Lease - 4 copies
Fee Lease - 3 copies

State of New Mexico
Energy, Minerals and Natural Resources Department

Form C-102
Revised 1-1-89

OIL CONSERVATION DIVISION

DISTRICT I
P.O. Box 1980, Hobbs, NM 88240

P.O. Box 2088
Santa Fe, New Mexico 87504-2088

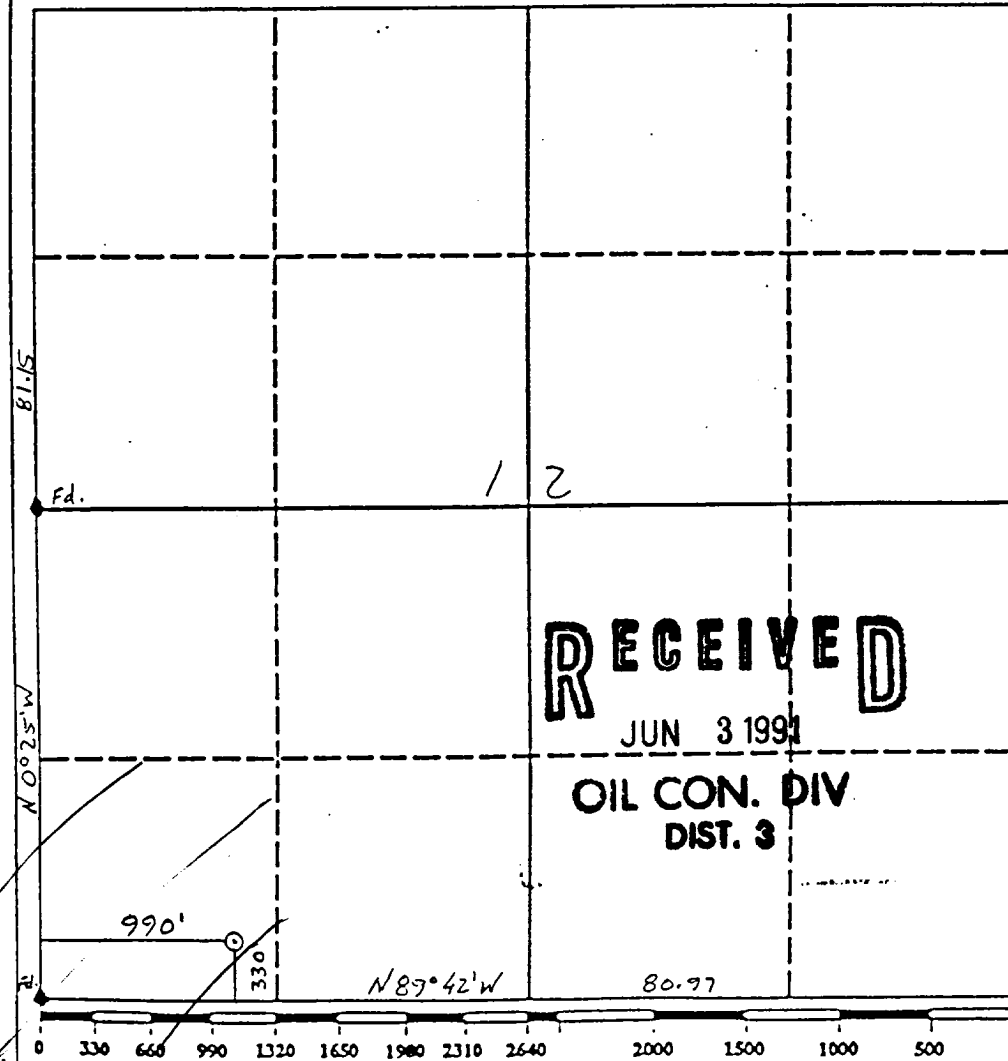
DISTRICT II
P.O. Drawer DD, Artesia, NM 88210

DISTRICT III
1000 Rio Brazos Rd., Aztec, NM 87410

WELL LOCATION AND ACREAGE DEDICATION PLAT

All Distances must be from the outer boundaries of the section

Operator GURLEY OIL COMPANY			Lease PATIENCE 12		Well No. 22-2
Unit Letter M	Section 12	Township 20N	Range 13W	County McKinley	
Actual Footage Location of Well: 330' feet from the South line and 990' feet from the West line					
Ground level Elev. 6141'	Producing Formation Hospah		Pool Wildcat	Dedicated Acreage: 40 Acres	
<p>1. Outline the acreage dedicated to the subject well by colored pencil or hatchure marks on the plat below.</p> <p>2. If more than one lease is dedicated to the well, outline each and identify the ownership thereof (both as to working interest and royalty).</p> <p>3. If more than one lease of different ownership is dedicated to the well, have the interest of all owners been consolidated by communitization, unitization, force-pooling, etc.? <input type="checkbox"/> Yes <input type="checkbox"/> No If answer is "yes" type of consolidation _____ If answer is "no" list the owners and tract descriptions which have actually been consolidated. (Use reverse side of this form if necessary.) No allowable will be assigned to the well until all interests have been consolidated (by communitization, unitization, forced-pooling, or otherwise) or until a non-standard unit, eliminating such interest, has been approved by the Division.</p>					



OPERATOR CERTIFICATION

I hereby certify that the information contained herein is true and complete to the best of my knowledge and belief.

Signature
Mike Maloney
Printed Name
Mike Maloney
Position
Manager
Company
Gurley Oil Company
Date
March 7, 1991

SURVEYOR CERTIFICATION

I hereby certify that the well location shown on this plat was plotted from field notes of actual surveys made by me or under my supervision, and that the same is true and correct to the best of my knowledge and belief.

2-20-91
Date Surveyed
Roy A. Rush
Signature & Seal of Professional Surveyor
Roy A. Rush
8894
Certificate No.
8894
NEW MEXICO
REGISTERED PROFESSIONAL LAND SURVEYOR

