

UNITED STATES  
DEPARTMENT OF THE INTERIOR  
BUREAU OF LAND MANAGEMENT

30-031-20961

APPLICATION FOR PERMIT TO DRILL, DEEPEN, OR PLUG BACK

1a. TYPE OF WORK

DRILL ☒

DEEPEN ☐

PLUG BACK ☐

b. TYPE OF WELL

OIL  
WELL ☒

GAS  
WELL ☐

OTHER

SINGLE  
ZONE ☒

MULTIPLE  
ZONE ☐

2. NAME OF OPERATOR

Merrion Oil & Gas Corporation

3. ADDRESS OF OPERATOR

P. O. Box 840, Farmington, New Mexico 87499

4. LOCATION OF WELL (Report location clearly and in accordance with any State requirements.)\*

At surface

415' FNL & 685' FWL

At proposed prod. zone

14. DISTANCE IN MILES AND DIRECTION FROM NEAREST TOWN OR POST OFFICE\*

4 miles East of Whitehorse, New Mexico

16. DISTANCE FROM PROPOSED\*

LOCATION TO NEAREST  
PROPERTY OR LEASE LINE, FT.  
(Also to nearest drig. unit line, if any)

415'

17. NO. OF ACRES IN LEASE

1280 Acres

18. NO. OF ACRES ASSIGNED  
TO THIS WELL

40

19. DISTANCE FROM PROPOSED LOCATION\*

TO NEAREST WELL, DRILLING, COMPLETED,  
OR APPLIED FOR, ON THIS LEASE, FT.

None

20. PROPOSED DEPTH

3500'

21. ROTARY OR CABLE TOOLS

Rotary

22. ELEVATIONS (Show whether DF, RT, GR, etc.)

6755' GL

23. APPROX. DATE WORK WILL START\*

September, 1991

24.

PROPOSED CASING AND CEMENTING PROGRAM

DRILLING OPERATIONS AUTHORIZED ARE

SUBJECT TO COMPLIANCE WITH ATTACHED  
"GENERAL REQUIREMENTS"

SIZE OF HOLE	SIZE OF CASING	WEIGHT PER FOOT	SETTING DEPTH	QUANTITY OF CEMENT
9-1/4"	7"	23#/ft	± 240'	100 sx (118 cu.ft.)
6-1/4"	4-1/2"	10.5#/ft	± 3500'	300 sx (366 cu.ft.)

Propose to drill a vertical well into the Cretaceous Dakota. If productive will set 4-1/2" casing thru and cement in place. A detailed plan is attached.

RECEIVED

OCT 22 1991

OIL CON. DIV.  
DIST. 3

IN ABOVE SPACE DESCRIBE PROPOSED PROGRAM: If proposal is to deepen or plug back, give data on present productive zone and proposed new productive zone. If proposal is to drill or deepen directionally, give pertinent data on subsurface locations and measured and true vertical depths. Give blowout preventer program, if any.

24.

SIGNED

Steven S. Dunn

TITLE

Operations Manager

DATE

7-19-91

(This space for Federal or State office use)

PERMIT NO.

APPROVAL DATE

APPROVED  
AS AMENDED

APPROVED BY

TITLE

CONDITIONS OF APPROVAL, IF ANY:

Distribution: 0+6 BLM; 1 Well File

OCT 18 1991

AREA MANAGER

\*See Instructions On Reverse Side

91V1393 61

100-100  
VIT. MOO JIO  
8.12.15

REMOVED  
REMOVED

REMOVED

Submit to Appropriate  
District Office  
State Lease - 4 copies  
Fee Lease - 3 copies

State of New Mexico  
Energy, Minerals and Natural Resources Department

Form C-102  
Revised 1-1-89

OIL CONSERVATION DIVISION

P.O. Box 2088

Santa Fe, New Mexico 87504-2088

DISTRICT I

P.O. Box 1980, Hobbs, NM 88240

DISTRICT II

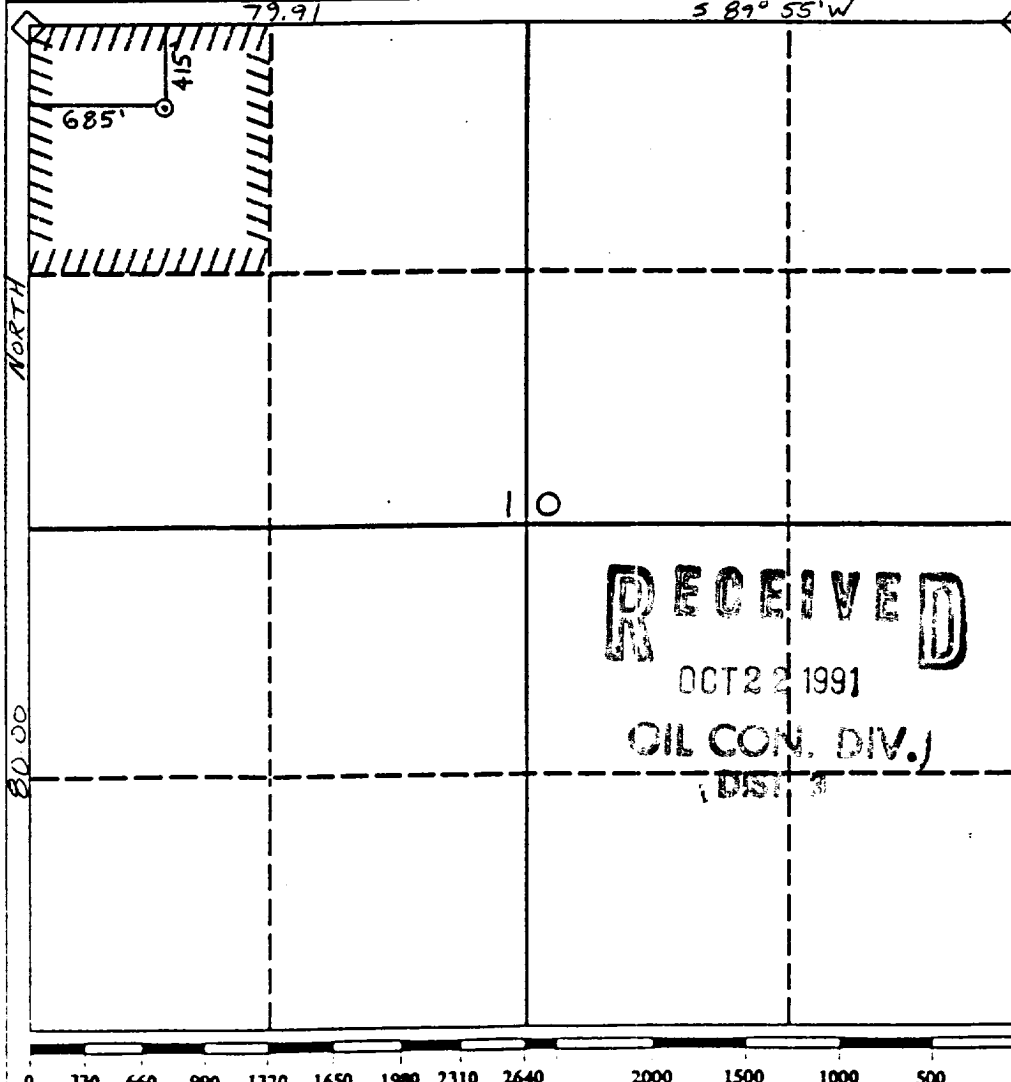
P.O. Drawer DD, Artesia, NM 88210

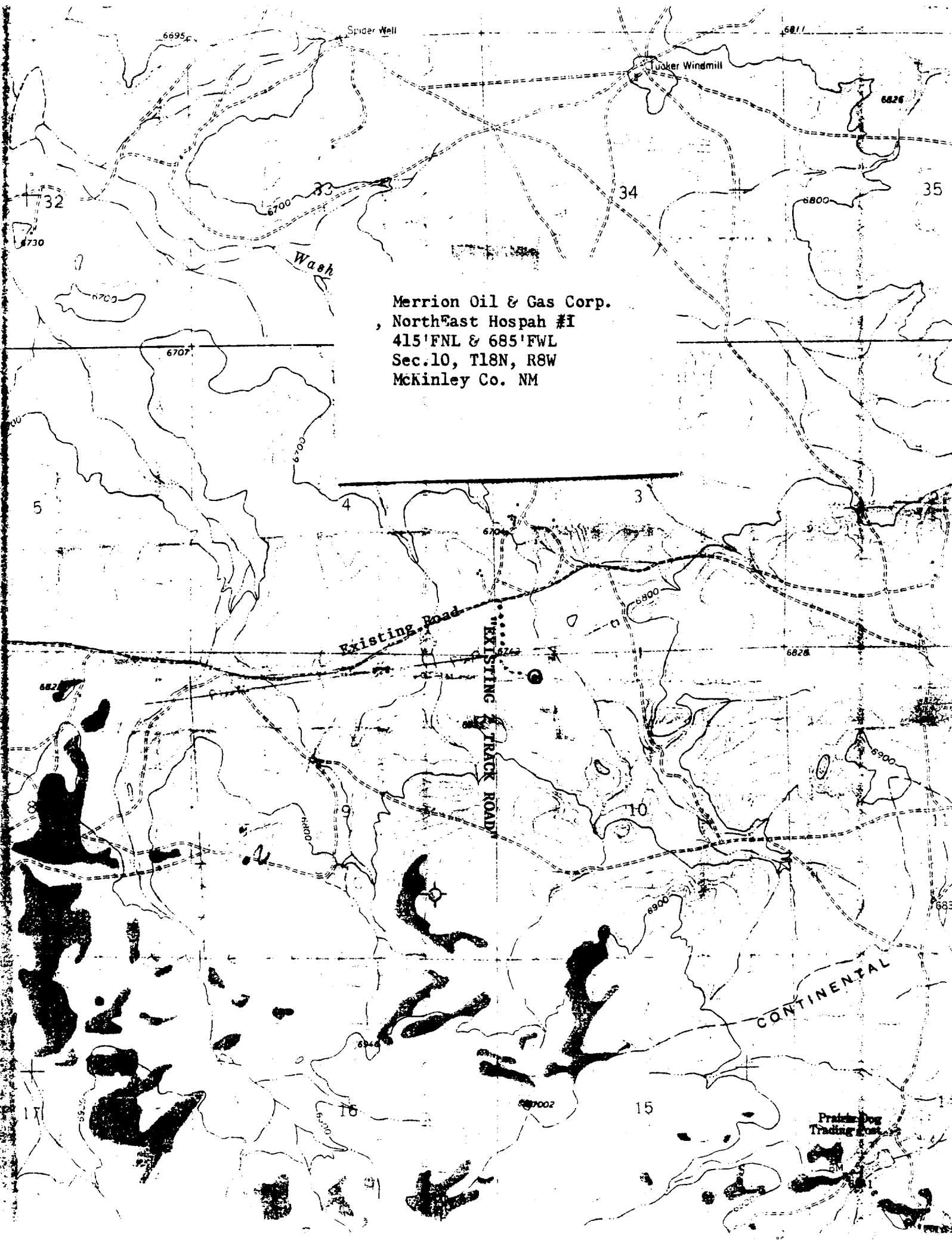
DISTRICT III

1000 Rio Brazos Rd., Aztec, NM 87410

WELL LOCATION AND ACREAGE DEDICATION PLAT

All Distances must be from the outer boundaries of the section

Operator <b>Merrion Oil &amp; Gas Corporation</b>		Lease <b>NorthEast Hospah</b>		Well No. <b>1</b>	
Unit Letter <b>D</b>	Section <b>10</b>	Township <b>18N</b>	Range <b>8W</b>	County <b>McKinley</b>	
Actual Footage Location of Well: <b>415</b> feet from the <b>North</b> line and <b>685</b> feet from the <b>West</b> line					
Ground level Elev. <b>6755'</b>	Producing Formation <b>Gallup or Dakota</b>		Pool <b>Wildcat</b>	Dedicated Acreage: <b>40</b> Acres	
<p>1. Outline the acreage dedicated to the subject well by colored pencil or hatchure marks on the plat below.</p> <p>2. If more than one lease is dedicated to the well, outline each and identify the ownership thereof (both as to working interest and royalty).</p> <p>3. If more than one lease of different ownership is dedicated to the well, have the interest of all owners been consolidated by communitization, unitization, force-pooling, etc.? <input type="checkbox"/> Yes <input type="checkbox"/> No If answer is "yes" type of consolidation _____</p> <p>If answer is "no" list the owners and tract descriptions which have actually been consolidated. (Use reverse side of this form if necessary.) _____</p> <p>No allowable will be assigned to the well until all interests have been consolidated (by communitization, unitization, forced-pooling, or otherwise) or until a non-standard unit, eliminating such interest, has been approved by the Division.</p>					
			<p><b>OPERATOR CERTIFICATION</b></p> <p>I hereby certify that the information contained herein is true and complete to the best of my knowledge and belief.</p> <p>Signature: <i>Steven S. Dunn</i></p> <p>Printed Name: <b>Steven S. Dunn</b></p> <p>Position: <b>Operations Manager</b></p> <p>Company: <b>Merrion Oil &amp; Gas Corp.</b></p> <p>Date: <b>7-17-91</b></p> <p><b>SURVEYOR CERTIFICATION</b></p> <p>I hereby certify that the well location shown on this plat was plotted from field notes of actual surveys made by me or under my supervision, and that the same is true and correct to the best of my knowledge and belief. <b>2-27-91</b></p> <p>Date Surveyed: <b>Roy A. Rush</b></p> <p>Signature &amp; Seal of Professional Surveyor: <i>Roy A. Rush</i></p> <p>Certificate No. <b>8894</b></p>		



Merrion Oil & Gas Corp.  
North East Hospah #1  
415' FNL & 685' FWL  
Sec. 10, T18N, R8W  
McKinley Co. NM