

NUMBER OF COPIES RECEIVED	
DISTRIBUTION	
SANTA FE	
FILE	
U.S.G.S.	
LAND OFFICE	
TRANSPORTER	IL GAS
PRORATION OFFICE	
OPERATOR	

NEW MEXICO OIL CONSERVATION COMMISSION
Santa Fe, New Mexico

Form C-101
Revised (12/1/55)

NOTICE OF INTENTION TO DRILL

Notice must be given to the District Office of the Oil Conservation Commission and approval obtained before drilling or recompletion begins. If changes in the proposed plan are considered advisable, a copy of this notice showing such changes will be returned to the sender. Submit this notice in **QUINTUPLICATE**. One copy will be returned following approval. See additional instructions in Rules and Regulations of the Commission.

If State Land submit 6 Copies Attach Form C- 128 in triplicate to first 3 copies of form C-101

Farmington, New Mexico

November 14, 1961

(Place)

(Date)

OIL CONSERVATION COMMISSION
SANTA FE, NEW MEXICO

Gentlemen:

You are hereby notified that it is our intention to commence the Drilling of a well to be known as
Scanlon - Shepard

(Company, or Operator)

Santa Fe R.R. Company

(Lease)

Well No. **6**

in **L**

(Unit)

The well is

located **1650** feet from the **South** line and **990** feet from the **West** line of Section **22**, T. **20N**, R. **9W**, NMPM.

(GIVE LOCATION FROM SECTION LINE)

Chaco Wash

Pool,

McKinley

County

If State Land the Oil and Gas Lease is No.

If patented land the owner is **Santa Fe R.R. Company**

Address **Los Angeles, California**

We propose to drill well with drilling equipment as follows: **1000 Mayhew**

Rotary

The status of plugging bond is **Statewide**

Drilling Contractor **Carl Ray**

We intend to complete this well in the **Chaco**

formation at an approximate depth of **400 - 450**

feet.

CASING PROGRAM

We propose to use the following strings of Casing and to cement them as indicated:

Size of Hole	Size of Casing	Weight per Foot	New or Second Hand	Depth	Sacks Cement
6"	4 1/2"	9	Used	450	10

If changes in the above plans become advisable we will notify you immediately.

ADDITIONAL INFORMATION (If recompletion give full details of proposed plan of work.)

Approved....., 19**61**
Except as follows:

Sincerely yours,

Scanlon - Shepard (Company or Operator)

By **R.J. Scanlon**

Position **Owner**

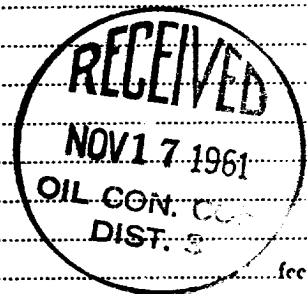
Send Communications regarding well to

Name **Scanlon-Shepard**

Address **Box 601, Farmington, New Mexico**

OIL CONSERVATION COMMISSION

By **[Signature]**



NUMBER OF COPIES RECEIVED	
DISTRIBUTION	
SANTA FE	
FILE	
U.S.S.	
LAND OFFICE	
TRANSPORTER	OIL GAS
PROBATION OFFICE	
OPERATOR	

NEW MEXICO OIL CONSERVATION COMMISSION
WELL LOCATION AND ACREAGE DEDICATION PLAT
 SEE INSTRUCTIONS FOR COMPLETING THIS FORM ON THE REVERSE SIDE

FORM C-128
 Revised 5/1/57

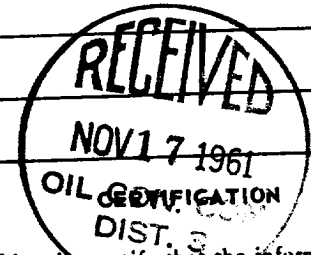
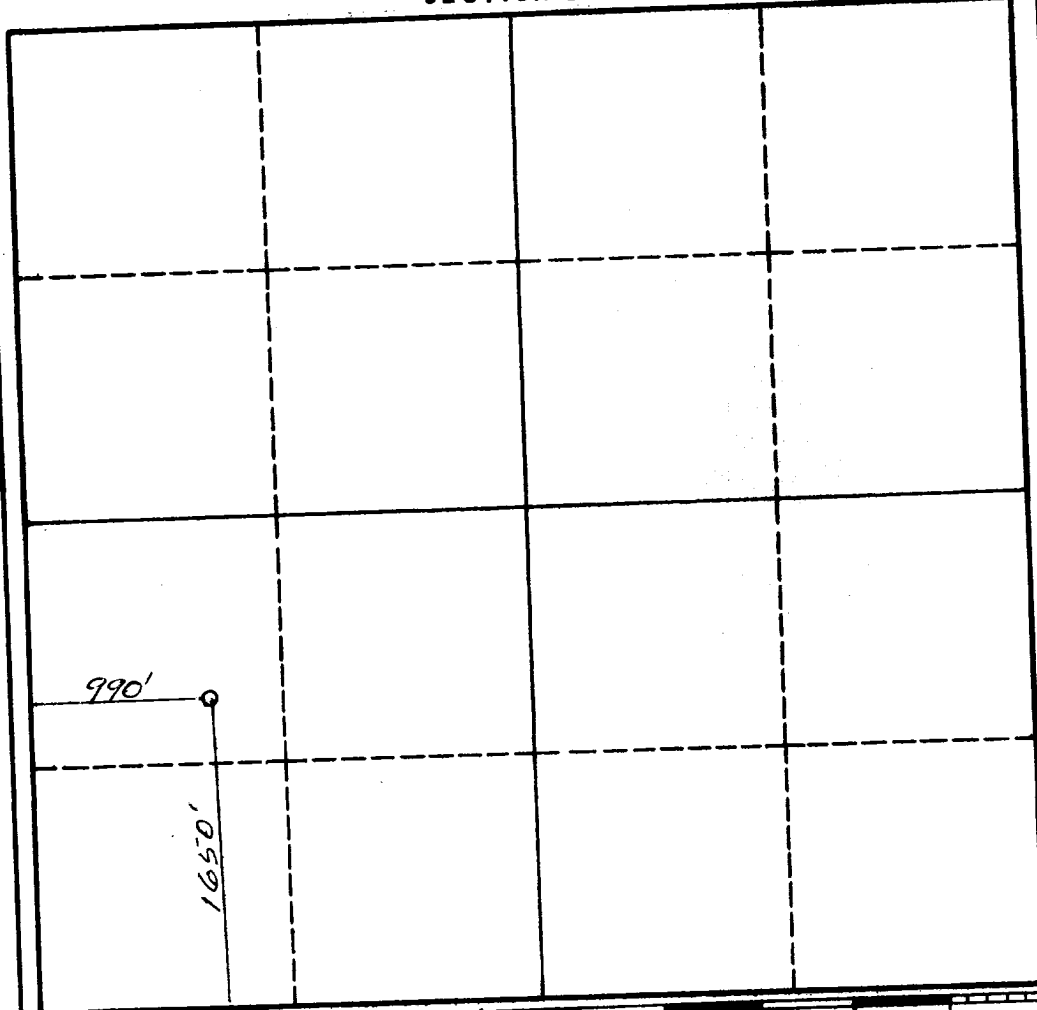
SECTION A

Operator Scanlon-Shepard		Lease Santa Fe R.R. Company		Well No. 6
Unit Letter L	Section 22	Township 20N	Range 9W	County McKinley
Actual Footage Location of Well: 1650 feet from the South line and 990 feet from the West line				
Ground Level Elev. 6470	Producing Formation Chacara	Pool Chaco Wash - Mesa Verde		Dedicated Acreage: NWSW 40 Acres

1. Is the Operator the only owner in the dedicated acreage outlined on the plat below? YES ☒ NO ☐ ("Owner" means the person who has the right to drill into and to produce from any pool and to appropriate the production either for himself or for himself and another. (65-3-29 (e) NMSA 1935 Comp.)
2. If the answer to question one is "no," have the interests of all the owners been consolidated by communitization agreement or otherwise? YES ☐ NO ☐ . If answer is "yes," Type of Consolidation _____
3. If the answer to question two is "no," list all the owners and their respective interests below:

Owner	Land Description

SECTION B



I hereby certify that the information in SECTION A above is true and complete to the best of my knowledge and belief.

Name <i>R.J. Scanlon</i>
Position Owner
Company Scanlon-Shepard
Date November 14, 1961

I hereby certify that the well location shown on the plat in SECTION B was plotted from field notes of actual surveys made by me or under my supervision, and that the same is true and correct to the best of my knowledge and belief.

Date Surveyed November 10, 1961
Registered Professional Engineer and/or Land Surveyor <i>R.J. Scanlon</i>
Certificate No. 1457

