

UNITED STATES  
DEPARTMENT OF THE INTERIOR  
GEOLOGICAL SURVEY

## APPLICATION FOR PERMIT TO DRILL, DEEPEN, OR PLUG BACK

## 1a. TYPE OF WORK

DRILL ☒DEEPEN ☐PLUG BACK ☐

## b. TYPE OF WELL

OIL  
WELL ☐GAS  
WELL ☒

OTHER

SINGLE  
ZONE ☒MULTIPLE  
ZONE ☐

## 2. NAME OF OPERATOR

D. E. Florence

## 3. ADDRESS OF OPERATOR

3352 South Verbena Court, Denver, Colorado

## 4. LOCATION OF WELL (Report location clearly and in accordance with any State requirements.)\*

At surface

790' S L &amp; 1450' W L

At proposed prod. zone

## 14. DISTANCE IN MILES AND DIRECTION FROM NEAREST TOWN OR POST OFFICE\*

## 10. DISTANCE FROM PROPOSED\*

LOCATION TO NEAREST  
PROPERTY OR LEASE LINE, FT.  
(Also to nearest drig. unit line, if any)18. DISTANCE FROM PROPOSED LOCATION\*  
TO NEAREST WELL, DRILLING, COMPLETED,  
OR APPLIED FOR, ON THIS LEASE, FT.

## 21. ELEVATIONS (Show whether DF, RT, GR, etc.)

7497 GR

## 16. NO. OF ACRES IN LEASE

160

## 19. PROPOSED DEPTH

3200'

17. NO. OF ACRES ASSIGNED  
TO THIS WELL

160

## 20. ROTARY OR CABLE TOOLS

Rotary

## 22. APPROX. DATE WORK WILL START\*

October 25, 1970

## 23.

## PROPOSED CASING AND CEMENTING PROGRAM

SIZE OF HOLE	SIZE OF CASING	WEIGHT PER FOOT	SETTING DEPTH	QUANTITY OF CEMENT
12 1/4	8 5/8	32#	100'	100 sacks
6 3/4	4 1/2	9.5#	3200'	100 sacks

Cement 8 5/8" casing at 100' with 100 sacks. Drill 6 3/4" hole 100' below top of Pictured Cliffs. Run electric log. Cement 4 1/2" casing at 3200' with 100 sacks. Perforate casing opposite Pictured Cliffs sand. Sand-Water fracture treat. Run 1 1/2" tubing to base of perforations. Swab, test, and complete.

IN ABOVE SPACE DESCRIBE PROPOSED PROGRAM: If proposal is to deepen or plug back, give data on present productive zone and proposed new productive zone. If proposal is to drill or deepen directionally, give pertinent data on subsurface locations and measured and true vertical depths. Give blowout preventer program, if any.

## 24.

SIGNED

*J. J. Ray*

TITLE

*Agent*

DATE

*Oct 21, 1970*

(This space for Federal or State office use)

PERMIT NO.

APPROVAL DATE

APPROVED BY

*M*

TITLE

CONDITIONS OF APPROVAL, IF ANY:

\*See Instructions On Reverse Side

5. LEASE DESIGNATION AND SERIAL NO.

NM 03993

6. IF INDIAN, ALLOTTEE OR TRIBE NAME

7. UNIT AGREEMENT NAME

8. FARM OR LEASE NAME

F

9. WELL NO.

1

10. FIELD AND POOL, OR WILDCAT

So Blanco PC

11. SEC., T., R., M., OR BLK.  
AND SURVEY OR AREA

8-23N-1W

12. COUNTY OR PARISH

13. STATE

Rio Arriba N. Mex.

NEW MEXICO OIL CONSERVATION COMMISSION  
WELL LOCATION AND ACERAGE DEDICATION PLAT

RECEIVED

OCT 28 1970

All distances must be from the outer boundaries of the Section

Operator **D. E. FLORANCE**  
Unit Letter **N** Section **8** Township **23 NORTH** Range **1 WEST** County **RIO ARriba**  
Actual Footage Location of Well: **790** feet from the **SOUTH** line **1450** feet from the **WEST** line  
Ground Level Elev **7497.0** Formation **PICTURED CLIFFS SOUTH BLANCO P.C.** Dedicated Acreage **160** Acres

- Outline the acreage dedicated to the subject well by colored pencil or hachure marks on the plat below.
- If more than one lease is dedicated to the well, outline each and identify the ownership thereof (both as to working interest and royalty).
- If more than one lease of different ownership is dedicated to the well, have the interests of all owners been consolidated by communitization, unitization, force-pooling, etc?

( ) Yes ( ) No If answer is "yes," type of consolidation \_\_\_\_\_  
If answer is "no," list the owners and tract descriptions which have actually consolidated. (Use reverse side of this form if necessary)

No allowable will be assigned to the well until all interests have been consolidated (by communitization, unitization, forced-pooling, or otherwise) or until a non standard unit, eliminating such interests, has been approved by the Commission.

OCT 29 1970

DL CON. COM.

DIST. 3

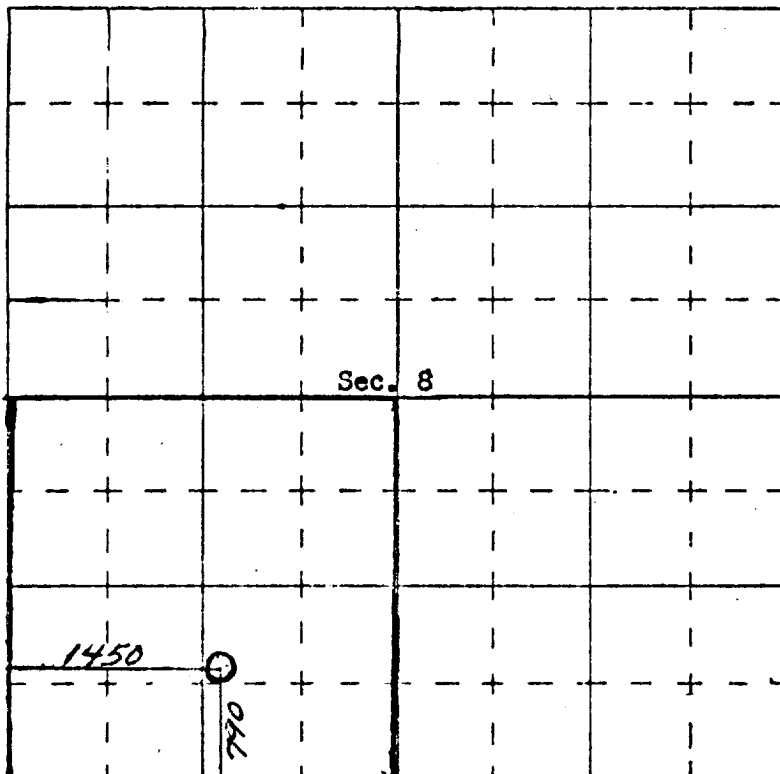
CERTIFICATION

I hereby certify that the information contained herein is true and complete to the best of my knowledge and belief.

Name **J. J. Ray**  
Position **Agent**  
Company **D. E. Florance**  
Date **Oct 22, 1970**

I hereby certify that the well location shown on this plat was plotted from field notes of actual surveys made by me or under my supervision, and that the same is true and correct to the best of my knowledge and belief.

Date Surveyed **20 October, 1970**  
Registered Professional Engineer and/or Land Surveyor  
**JAMES P. LEESE**  
**1463**  
Certificate No. **1463**



SCALE—4 INCHES EQUALS 1 MILE

SAN JUAN ENGINEERING COMPANY, FARMINGTON, N. M.