

UNITED STATES
DEPARTMENT OF THE INTERIOR
GEOLOGICAL SURVEY

APPLICATION FOR PERMIT TO DRILL, DEEPEN, OR PLUG BACK

1a. TYPE OF WORK

DRILL ☒DEEPEN ☐PLUG BACK ☐

b. TYPE OF WELL

OIL
WELL ☒GAS
WELL ☐

OTHER

SINGLE
ZONE ☒MULTIPLE
ZONE ☐

2. NAME OF OPERATOR

Amerada Hess Corporation

3. ADDRESS OF OPERATOR

Box 2040 - Tulsa, Oklahoma 74102

4. LOCATION OF WELL (Report location clearly and in accordance with any State requirements.*)
At surface

800' FSL - 1650' FEL

At proposed prod. zone

Same

14. DISTANCE IN MILES AND DIRECTION FROM NEAREST TOWN OR POST OFFICE*

Approx. 7 mi. SW Lindrith, N.M.

15. DISTANCE FROM PROPOSED*

LOCATION TO NEAREST
PROPERTY OR LEASE LINE, FT.
(Also to nearest drlg. unit line, if any)

16. NO. OF ACRES IN LEASE

640

17. NO. OF ACRES ASSIGNED
TO THIS WELL

160

18. DISTANCE FROM PROPOSED LOCATION*
TO NEAREST WELL, DRILLING, COMPLETED,
OR APPLIED FOR, ON THIS LEASE, FT.

19. PROPOSED DEPTH

3000' +/-

20. ROTARY OR CABLE TOOLS

Rotary

21. ELEVATIONS (Show whether DF, RT, GR, etc.)

Est. 7170'GR

22. APPROX. DATE WORK WILL START*

June 1, 1977

23.

PROPOSED CASING AND CEMENTING PROGRAM

SIZE OF HOLE	SIZE OF CASING	WEIGHT PER FOOT	SETTING DEPTH	QUANTITY OF CEMENT
12-1/4"	9-5/8"	32.3#	350'	250 Sx.
7-7/8"	4-1/2"	9.5#	3000'	400 Sx.

Plan to drill 12 1/4" hole from surface to 350' , set and cement 9-5/8" OD Csg. at 350' with 250 sx. cement (Circ.). WOC, and drill out from under 9-5/8" csg. with 7-7/8" hole to proposed TD of 3000' or sufficient depth to check Picture: Cliff Formation. If productive complete in Picture Cliff, run 4-1/2" OD Csg. to TD ;and cement with 400 sx. cmt.

No core or DST are anticipated.

Mud program is to use low viscosity and low water loss mud, from under surface casing to TD w/ viscosity 60-70 for logging.

Attachments: Blowout equipment program, NTL-6 Surface Usage Plan, Location maps, Plats, and Drilling Rig layout plan.

IN ABOVE SPACE DESCRIBE PROPOSED PROGRAM: If proposal is to deepen or plug back, give data on present productive zone and proposed new productive zone. If proposal is to drill or deepen directionally, give pertinent data on subsurface locations and measured and true vertical depths. Give blowout preventer program, if any.

24.

SIGNED

H. O. Porter

TITLE Admin. Assist. Drlg. Svcs.

DATE March 31, 1977

(This space for Federal or State office use)

PERMIT NO.

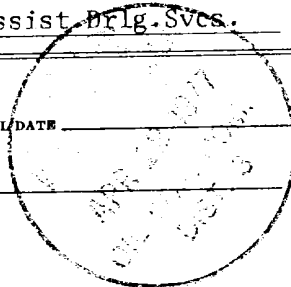
APPROVAL/DATE

APPROVED BY

TITLE

DATE

CONDITIONS OF APPROVAL, IF ANY:



NEW MEXICO OIL CONSERVATION COMMISSION
WELL LOCATION AND ACREAGE DEDICATION PLAT

Form C-102
Supersedes C-128
Effective 1-1-65

All distances must be from the outer boundaries of the Section.

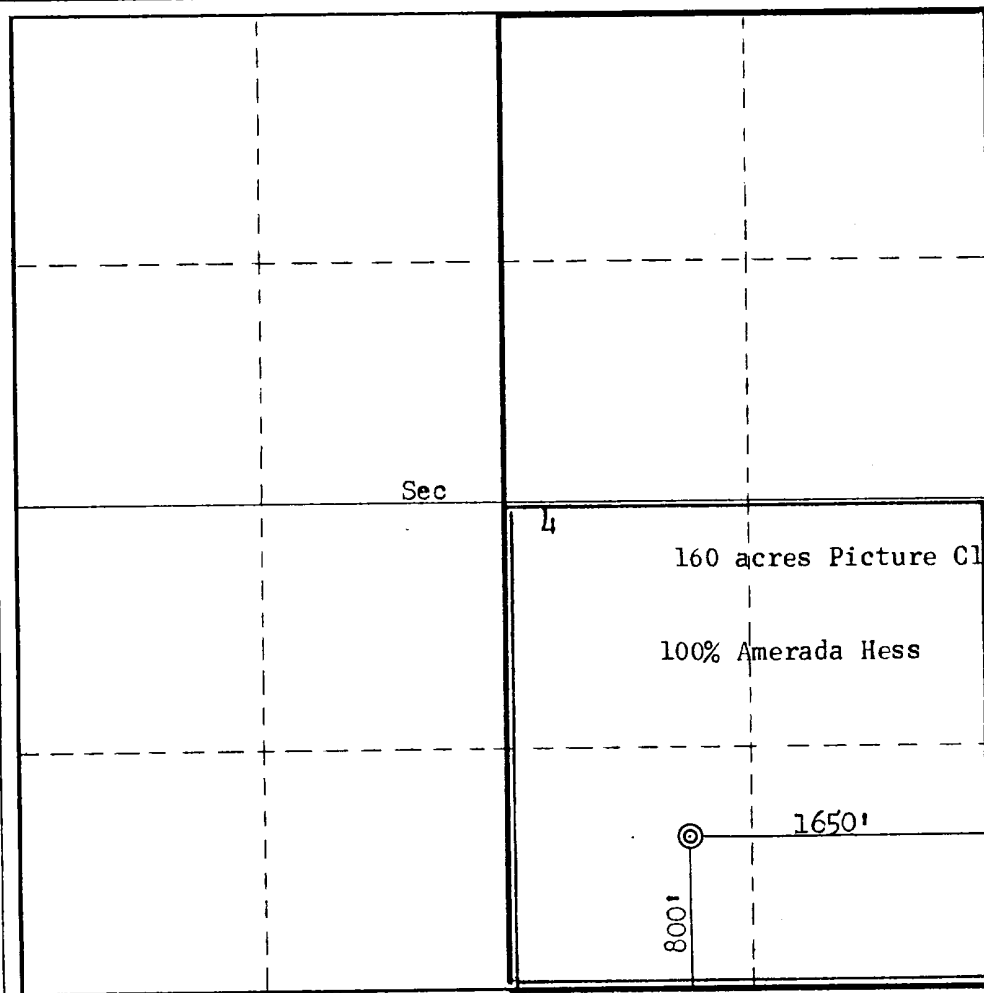
Operator Amerada Hess Corporation			Lease Jicarilla Apache J		Well No. 2
Unit Letter 0	Section 4	Township 23N	Range 4W	County Rio Arriba	
Actual Footage Location of Well: 800 feet from the South line and 1650 feet from the East line					
Ground Level Elev. 7154	Producing Formation Picture Cliff		Pool Picture Cliff	Dedicated Acreage: 160 Acres	

1. Outline the acreage dedicated to the subject well by colored pencil or hachure marks on the plat below.
2. If more than one lease is dedicated to the well, outline each and identify the ownership thereof (both as to working interest and royalty).
3. If more than one lease of different ownership is dedicated to the well, have the interests of all owners been consolidated by communitization, unitization, force-pooling, etc?

☐ Yes ☐ No If answer is "yes," type of consolidation N/A

If answer is "no," list the owners and tract descriptions which have actually been consolidated. (Use reverse side of this form if necessary.) N/A

No allowable will be assigned to the well until all interests have been consolidated (by communitization, unitization, forced-pooling, or otherwise) or until a non-standard unit, eliminating such interests, has been approved by the Commission.



CERTIFICATION

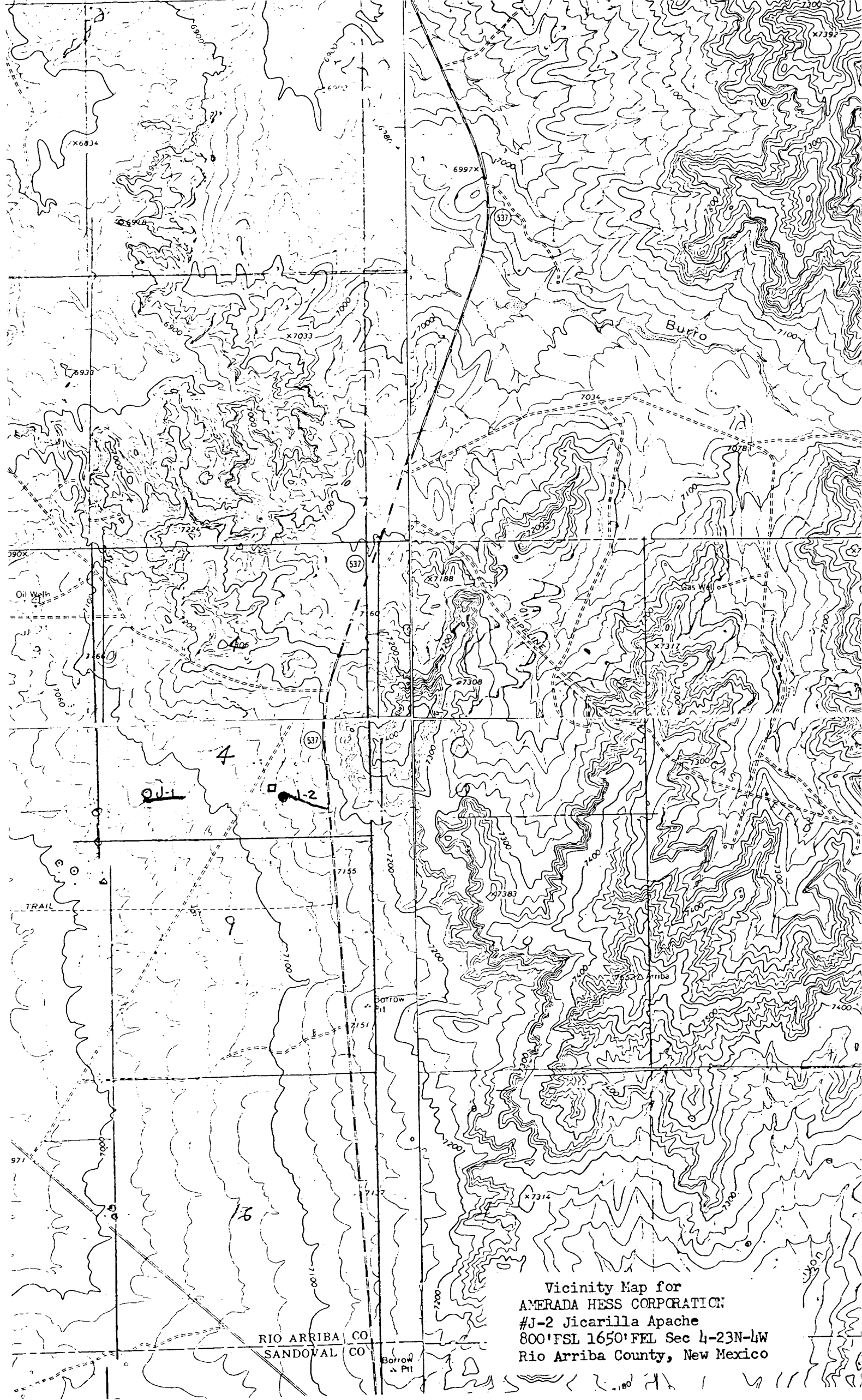
I hereby certify that the information contained herein is true and complete to the best of my knowledge and belief.

Name
H. O. Porter
Position
Admin. Assist. Drlg. Svcs.
Company
Amerada Hess Corporation
Date
February 11, 1977

I hereby certify that the well location shown on this plat was plotted from field notes of actual surveys made by me or under my supervision, and that the same is true and correct to the best of my knowledge and belief.

Date Surveyed
February 3, 1977
Registered Professional Engineer and/or Land Surveyor
Fred B. Kerr Jr.
Certificate No.
3950

0 330 660 990 1320 1650 1980 2310 2640 2000 1500 1000 500 0



Vicinity Map for
AMERADA HESS CORPORATION
#J-2 Jicarilla Apache
800' FSL 1650' FEL Sec 4-23N-4W
Rio Arriba County, New Mexico