

UNITED STATES
DEPARTMENT OF THE INTERIOR
GEOLOGICAL SURVEY

APPLICATION FOR PERMIT TO DRILL, DEEPEN, OR PLUG BACK

1a. TYPE OF WORK

DRILL ☒DEEPEN ☐PLUG BACK ☐

b. TYPE OF WELL

OIL
WELL ☒GAS
WELL ☐

OTHER

SINGLE
ZONE ☒MULTIPLE
ZONE ☐

2. NAME OF OPERATOR

Grace Petroleum Corporation

3. ADDRESS OF OPERATOR

1515 Arapahoe St., 3 Park Central, Ste. 200, Denver, CO 80202

4. LOCATION OF WELL (Report location clearly and in accordance with any State requirements*)

At surface

1780' FSL, 790' FWL

At proposed prod. zone

14. DISTANCE IN MILES AND DIRECTION FROM NEAREST TOWN OR POST OFFICE*

50 miles SE of Bloomfield, New Mexico

16. DISTANCE FROM PROPOSED*
LOCATION TO NEAREST 1780' FSL, 790' FWL
PROPERTY OR LEASE LINE, FT.
(Also to nearest drig. unit line, if any)18. DISTANCE FROM PROPOSED LOCATION*
TO NEAREST WELL, DRILLING, COMPLETED,
OR APPLIED FOR, ON THIS LEASE, FT.

21. ELEVATIONS (Show whether DF, RT, GR, etc.)

6950' Ungraded

23.

PROPOSED CASING AND CEMENTING PROGRAM

SIZE OF HOLE	SIZE OF CASING	WEIGHT PER FOOT	SETTING DEPTH	QUANTITY OF CEMENT
12-1/4"	8-5/8"	24#	300'	Cement to surface
7-7/8"	4-1/2"	10.5#	TD	300 sx, Class "G"

It is proposed to drill and test the Gallup Formation at the above location. Total depth will be approximately 5550'.

A 4 1/2" production string will be run and cemented, or the well plugged and abandoned, as per regulations, whichever test indicates.

This APD was approved 7/6/78, rescinded 9/4/79 under lease name of VanDenburgh Federal 7-1.

IN ABOVE SPACE DESCRIBE PROPOSED PROGRAM: If proposal is to deepen or plug back, give data on present productive zone and proposed new productive zone. If proposal is to drill or deepen directionally, give pertinent data on subsurface locations and measured and true vertical depths. Give blowout preventer program, if any.

24.

SIGNED

TITLE

Southern District
Operations Manager

DATE

4-16-80

(This space for Federal or State office use)

PERMIT NO.

APPROVAL DATE

APPROVED BY

TITLE

CONDITIONS OF APPROVAL, IF ANY:

DRILLING OPERATIONS AUTHORIZED ARE
SUBJECT TO COMPLIANCE WITH ATTACHED
"GENERAL REQUIREMENTS"

NMOCC

*See Instructions On Reverse Side

APPROVED
AS AMENDED

DATE

JUL 22 1980

James F. Sims
DISTRICT ENGINEER

MEXICO OIL CONSERVATION COMMISSION
WELL LOCATION AND ACREAGE DEDICATION PLAT

MAY 6 1978

Form C-102
Supersedes C-128
Effective 1-1-65

All distances must be from the outer boundaries of the Section.

PRODUCTION

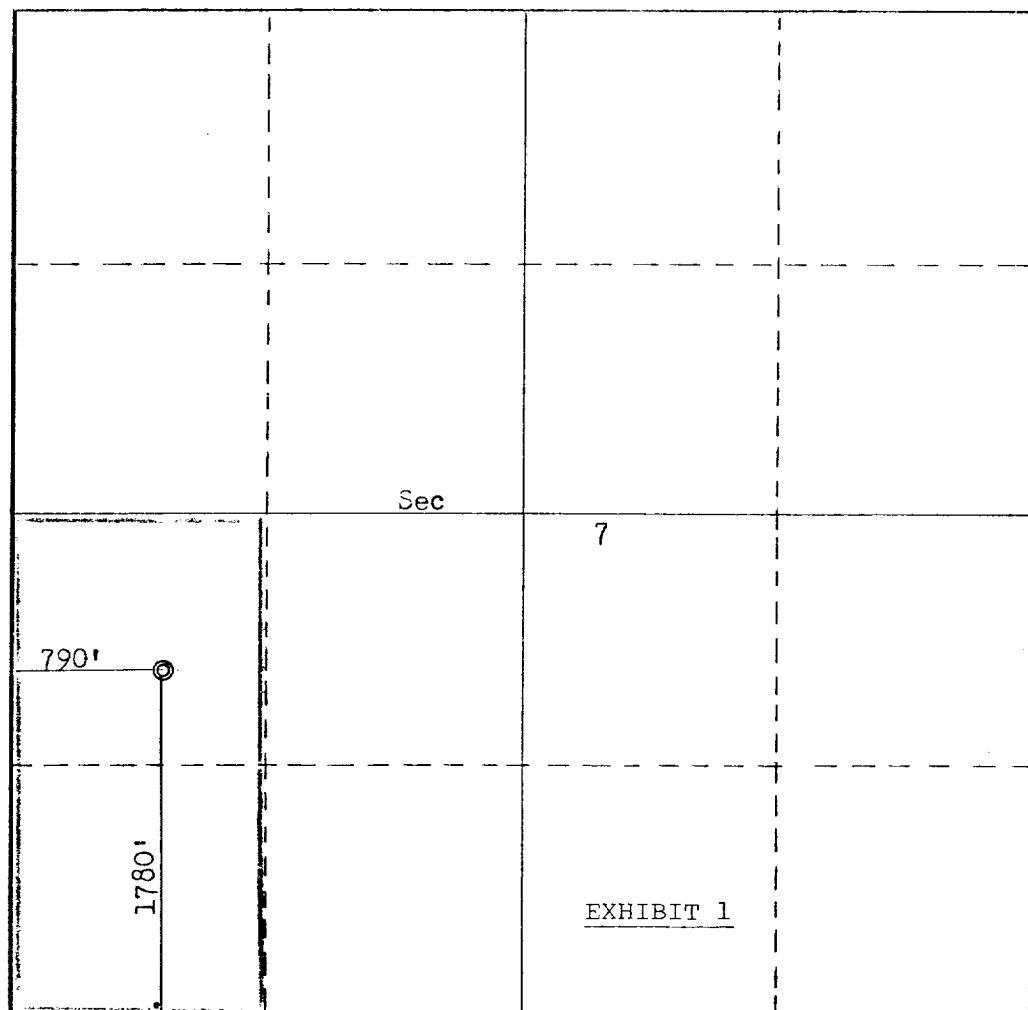
Operator Grace Petroleum Corporation			Lease McBee "B"		Well No. 2
Unit Letter L	Section 7	Township 23N	Range 6W	County Rio Arriba	
Actual Footage Location of Well: 1780 feet from the South line and 790 feet from the West line					
Ground Level Elev. 6950	Producing Formation Gallup		Pool Lybrook	Dedicated Acreage: 8040.34 Acres	

1. Outline the acreage dedicated to the subject well by colored pencil or hachure marks on the plat below.
2. If more than one lease is dedicated to the well, outline each and identify the ownership thereof (both as to working interest and royalty).
Single lease
3. If more than one lease of different ownership is dedicated to the well, have the interests of all owners been consolidated by communitization, unitization, force-pooling, etc? N/A

☐ Yes ☐ No If answer is "yes," type of consolidation _____

If answer is "no," list the owners and tract descriptions which have actually been consolidated. (Use reverse side of this form if necessary.) N/A

No allowable will be assigned to the well until all interests have been consolidated (by communitization, unitization, forced-pooling, or otherwise) or until a non-standard unit, eliminating such interests, has been approved by the Commission.



CERTIFICATION

I hereby certify that the information contained herein is true and complete to the best of my knowledge and belief.

Name

Scotty A. Smith

Position Southern District
Operations Manager

Company

Grace Petroleum Corporation

Date

March 26, 1980

I hereby certify that the well location shown on this plat was plotted from field notes of actual surveys made by me or under my supervision, and that the same is true and correct to the best of my knowledge and belief.

Date Surveyed

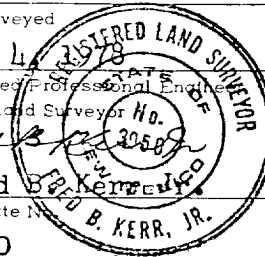
May 14, 1978

Registered Professional Engineer
and/or Land Surveyor No.

Fred B. Kerr, Jr.

Certificate No.

3950



0 330 660 990 1320 1650 1980 2310 2640 2970 3300 3630 3960 4290 4620 4950 5280 5610 5940 6270 6600

