

UNITED STATES  
DEPARTMENT OF THE INTERIOR  
GEOLOGICAL SURVEY

30-039-22996

APPLICATION FOR PERMIT TO DRILL, DEEPEN, OR PLUG BACK

1a. TYPE OF WORK  
DRILL ☒ DEEPEN ☐ PLUG BACK ☐

b. TYPE OF WELL  
OIL WELL ☒ GAS WELL ☐ OTHER ☐  
SINGLE ZONE ☒ MULTIPLE ZONE ☐

2. NAME OF OPERATOR  
Getty Oil Company

3. ADDRESS OF OPERATOR  
P.O. Box 3360, Casper, Wyoming 82602

4. LOCATION OF WELL (Report location clearly and in accordance with any State requirements.)  
At surface 1510' FNL & 1730' FEL

At proposed prod. zone  
Same

14. DISTANCE IN MILES AND DIRECTION FROM NEAREST TOWN OR POST OFFICE\*

U. S. GEOLOGICAL SURVEY

15. DISTANCE FROM PROPOSED\*  
LOCATION TO NEAREST  
PROPERTY OR LEASE LINE, FT.  
(Also to nearest drlg. unit line, if any)

16. NO. OF ACRES IN LEASE

160

17. NO. OF ACRES ASSIGNED  
TO THIS WELL

40

18. DISTANCE FROM PROPOSED LOCATION\*  
TO NEAREST WELL, DRILLING, COMPLETED,  
OR APPLIED FOR, ON THIS LEASE, FT.

19. PROPOSED DEPTH

7315'

20. ROTARY OR CABLE TOOLS

Rotary

21. ELEVATIONS (Show whether DF, RT, GR, etc.)

7037' GL

22. APPROX. DATE WORK WILL START\*

June 20, 1982

23. PROPOSED CASING AND CEMENTING PROGRAM

SIZE OF HOLE	SIZE OF CASING	WEIGHT PER FOOT	SETTING DEPTH	QUANTITY OF CEMENT
12 1/4"	8 5/8"	24#	300'	*105 sx to cement to surface
7 7/8"	5 1/2"	14.0# & 15.5#	7315'	*775 sx to cement to surface

\*Cement volumes will depend on volume calculated from hole caliper. Thirteen  
Point Surface Use Plan attached.

Gas is not dedicated.



IN ABOVE SPACE DESCRIBE PROPOSED PROGRAM: If proposal is to deepen or plug back, give data on present productive zone and proposed new productive zone. If proposal is to drill or deepen directionally, give pertinent data on subsurface locations and measured and true vertical depths. Give blowout preventer program, if any.

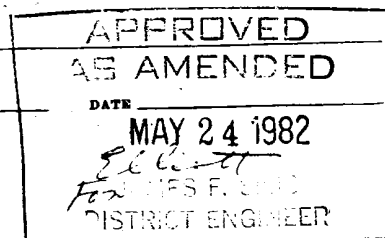
24. SIGNED [Signature] TITLE Area Superintendent DATE 5-6-82

(This space for Federal or State office use)

PERMIT NO. \_\_\_\_\_ APPROVAL DATE \_\_\_\_\_

APPROVED BY \_\_\_\_\_  
CONDITIONS OF APPROVAL, IF ANY:

TITLE \_\_\_\_\_



~~Hold C. E. for Dist~~

ch 2



## OIL CONSERVATION DIVISION

STATE OF NEW MEXICO  
ENERGY AND MINERALS DEPARTMENTP. O. BOX 2088  
SANTA FE, NEW MEXICO 87501Form C-107  
Revised 10-1-78

All distances must be from the outer boundaries of the Section.

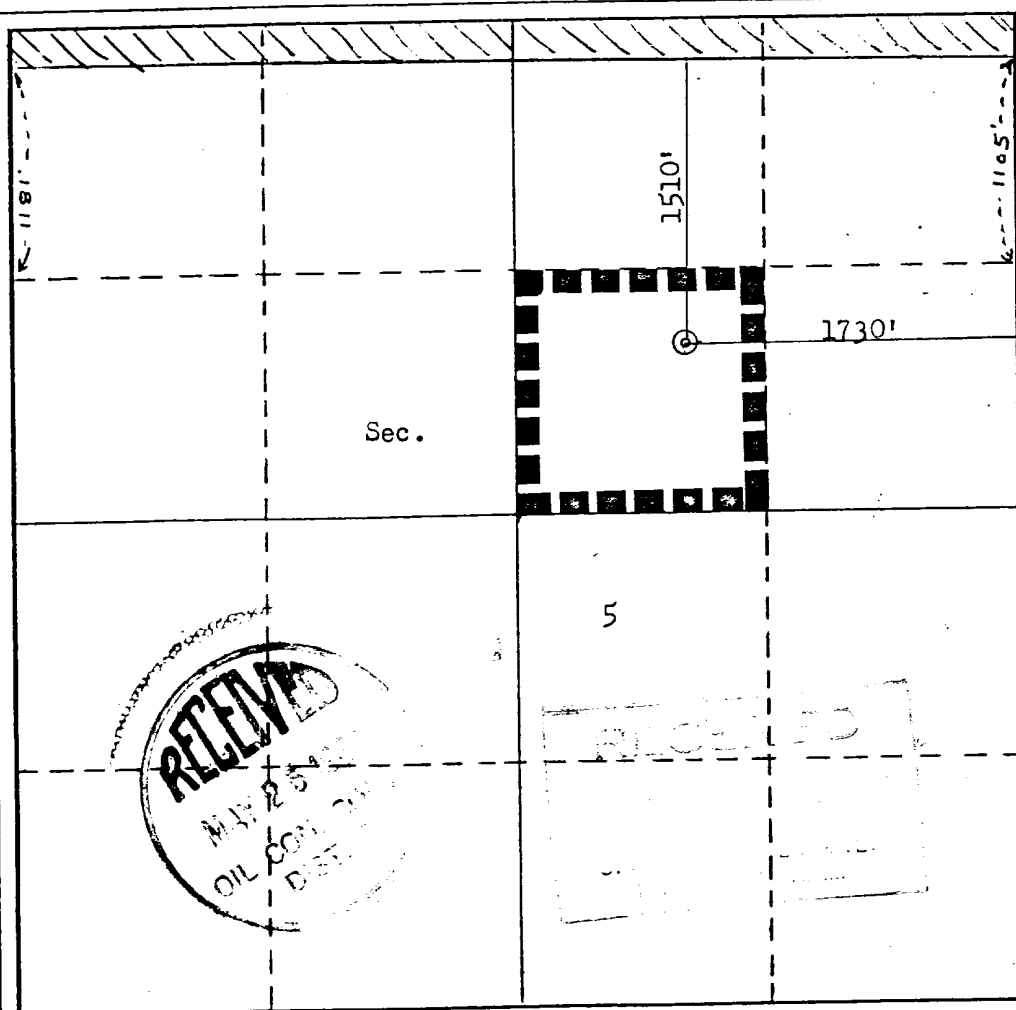
Operator <b>GETTY OIL COMPANY</b>			Lease <b>JICARILLA "D"</b>		Well No. <b>3</b>
Unit Letter <b>G</b>	Section <b>5</b>	Township <b>23N</b>	Range <b>4W</b>	County <b>Rio Arriba</b>	
Actual Footage Location of Well: <b>1510</b> feet from the <b>North</b> line and <b>1730</b> feet from the <b>East</b> line					
Ground Level Elev. <b>7037</b>	Producing Formation <b>Gallup/Dakota</b>		Pool <b>Se Lindrieth Gallup/Dakota South</b>		Dedicated Acreage: <b>40</b> Acres

1. Outline the acreage dedicated to the subject well by colored pencil or hatchure marks on the plat below.
2. If more than one lease is dedicated to the well, outline each and identify the ownership thereof (both as to working interest and royalty).
3. If more than one lease of different ownership is dedicated to the well, have the interests of all owners been consolidated by communitization, unitization, force-pooling, etc?

☐ Yes ☐ No If answer is "yes," type of consolidation \_\_\_\_\_

If answer is "no," list the owners and tract descriptions which have actually been consolidated. (Use reverse side of this form if necessary.) \_\_\_\_\_

No allowable will be assigned to the well until all interests have been consolidated (by communitization, unitization, forced-pooling, or otherwise) or until a non-standard unit, eliminating such interests, has been approved by the Commission.



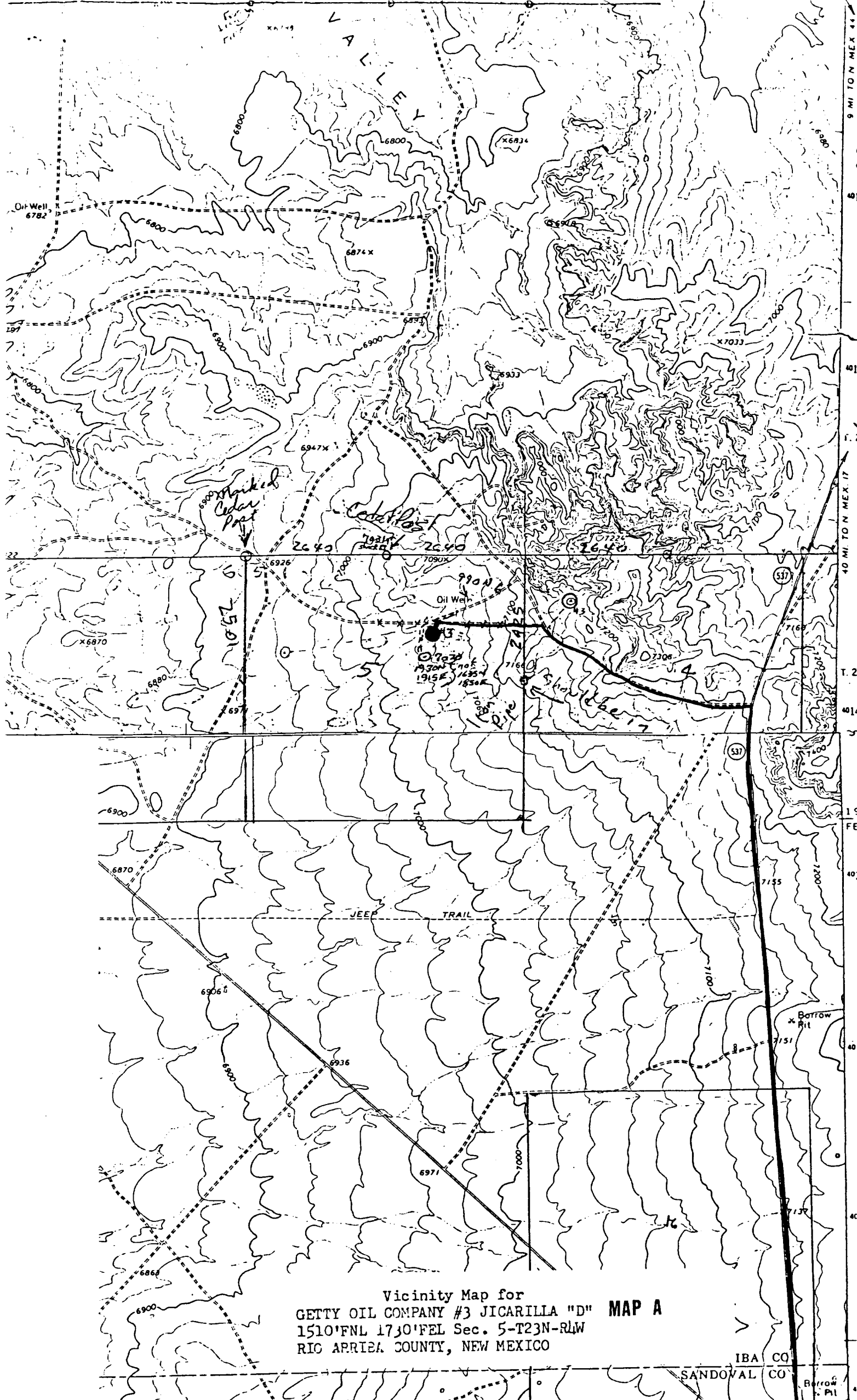
## CERTIFICATION

I hereby certify that the information contained herein is true and complete to the best of my knowledge and belief.

Name DW Brown  
Position Area Superintendent  
Company Getty Oil Company  
Date 5- -82

I hereby certify that the well location shown on this plat was plotted from field notes of actual surveys made by me or under my supervision, and that the same is true and correct to the best of my knowledge and belief.

Date Surveyed April 23, 1982  
Registered Professional Engineer and/or Land Surveyor  
Fred B. Kerr Jr.  
Certificate No. 3950



Vicinity Map for  
GETTY OIL COMPANY #3 JICARILLA "D" MAP A  
1510' FNL 1730' FEL Sec. 5-T23N-R4W  
RIO ARRIETA COUNTY, NEW MEXICO

IBA CO  
SANDOVAL CO