

UNITED STATES
DEPARTMENT OF THE INTERIOR
GEOLOGICAL SURVEY

APPLICATION FOR PERMIT TO DRILL, DEEPEN, OR PLUG BACK

1a. TYPE OF WORK
DRILL ☒ DEEPEN ☐ PLUG BACK ☐

b. TYPE OF WELL
OIL WELL ☒ GAS WELL ☐ OTHER Dual Completion SINGLE ZONE ☐ MULTIPLE ZONE ☐

2. NAME OF OPERATOR
William B. Martin and Associates

3. ADDRESS OF OPERATOR
2110 North Sullivan, Farmington, NM 87401

4. LOCATION OF WELL (Report location clearly and in accordance with any State requirements.)*
At surface 1980' FSL and 660' FEL
At proposed prod. zone

14. DISTANCE IN MILES AND DIRECTION FROM NEAREST TOWN OR POST OFFICE*
19 Miles NW of Cuba

15. DISTANCE FROM PROPOSED*
LOCATION TO NEAREST
PROPERTY OR LEASE LINE, FT.
(Also to nearest drig. unit line, if any) 3300' S

16. NO. OF ACRES IN LEASE
+ 2238

17. NO. OF ACRES ASSIGNED
TO THIS WELL 40

18. DISTANCE FROM PROPOSED LOCATION*
TO NEAREST WELL, DRILLING, COMPLETED,
OR APPLIED FOR, ON THIS LEASE, FT. 130' E

19. PROPOSED DEPTH 7275'

20. ROTARY OR CABLE TOOLS
Rotary

21. ELEVATIONS (Show whether DP, RT, GR, etc.)
Gr. 7063'

22. APPROX. DATE WORK WILL START*

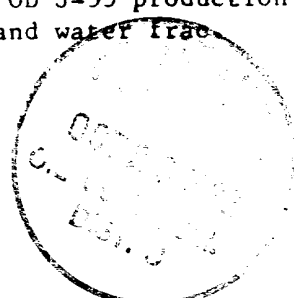
23. PROPOSED CASING AND CEMENTING PROGRAM

SIZE OF HOLE	SIZE OF CASING	WEIGHT PER FOOT	SETTING DEPTH	QUANTITY OF CEMENT
9 3/4"	8 5/8" OD J55	24.00	200'	200 sacks (246 cu.ft.)
7 7/8"	4 1/2" OD J55	9.5	7275'	1500 sacks (1472 cu.ft.)

Proposed Program: Drill through Dakota Formation using low solids, low water loss mud. Run open hole logs. Evaluate all potentially productive zones, including but not limited to the Gallup, Toota and Dakota. If feasible run 4 1/2" OD J-55 and 2 3/8" OD J-55 production strings. Perforate and stimulate with a sand water frac.

RECEIVED

OCT 01 1982

U. S. GEOLOGICAL SURVEY
FARMINGTON, N. M.

IN ABOVE SPACE DESCRIBE PROPOSED PROGRAM. If proposal is to deepen or plug back, give data on present productive zone and proposed new productive zone. If proposal is to drill or deepen directionally, give pertinent data on subsurface locations and measured and true vertical depths. Give blowout preventer program, if any.

24. SIGNED William B. Martin TITLE Operator DATE Sept. 20, 1982

(This space for Federal or State office use)

PERMIT NO. _____ APPROVAL DATE _____

APPROVED BY _____ TITLE _____ DATE _____

CONDITIONS OF APPROVAL, IF ANY:

JK7

OCT 18 1982
JAMES F. ...
DISTRICT ENGINEER

NMOCC

OIL CONSERVATION DIVISION

P. O. BOX 2088

Form C-102
Revised 10-1-78STATE OF NEW MEXICO
ENERGY AND MINERALS DEPARTMENT

SANTA FE, NEW MEXICO 87501

All distances must be from the outer boundaries of the Section

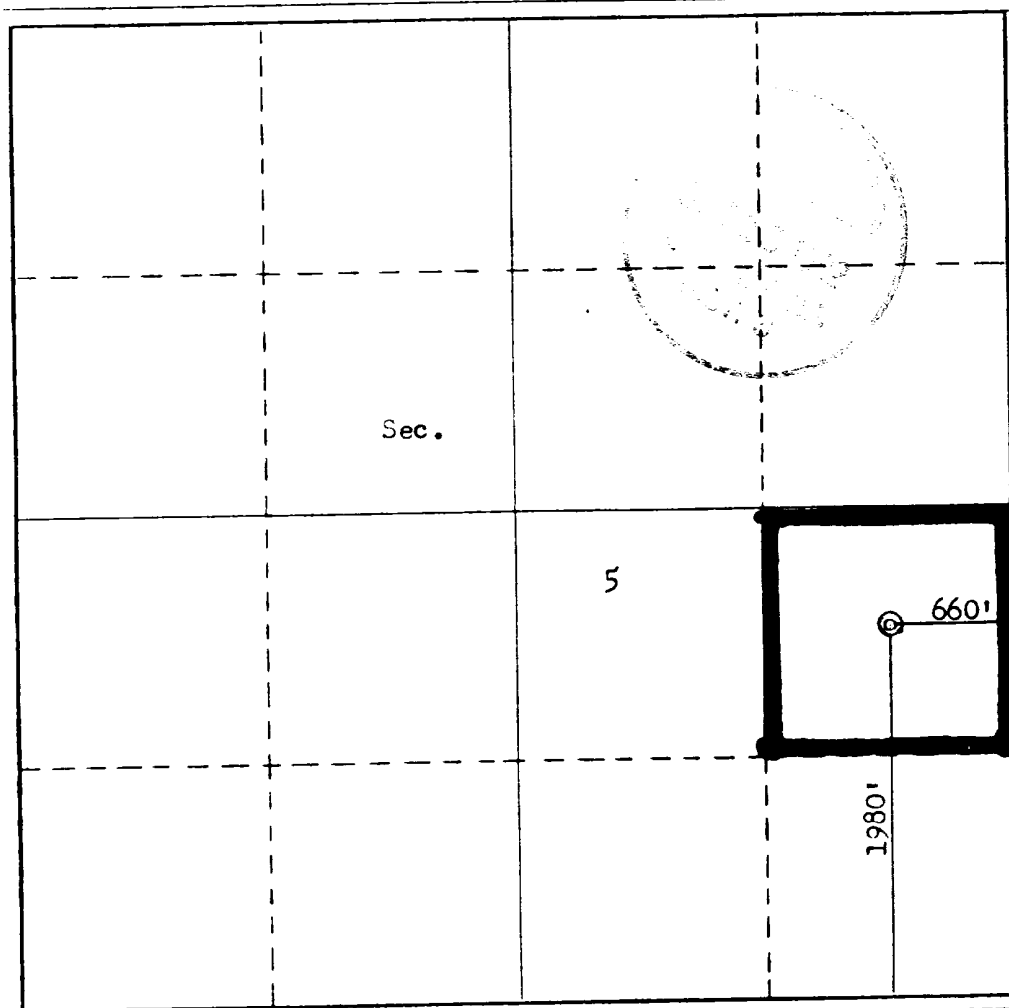
Operator W. B. MARTIN & ASSOCIATES			Lease MARTIN-FLORANCE			Well No. 9		
Tract Letter I	Section 5	Township 23N	Range 4W	County Rio Arriba				
Actual Footage Location of Well:								
1980 feet from the South line and		660 feet from the East line						
Ground Level Elev. 7063	Producing Formation Gallup-Dakota		Pool South Lindrith Gallup Dakota		Extension 40		Dedicated Acreage: 40 Acres	

1. Outline the acreage dedicated to the subject well by colored pencil or hachure marks on the plat below.
2. If more than one lease is dedicated to the well, outline each and identify the ownership thereof (both as to working interest and royalty).
3. If more than one lease of different ownership is dedicated to the well, have the interests of all owners been consolidated by communitization, unitization, force-pooling, etc?

☐ Yes ☐ No If answer is "yes," type of consolidation _____

If answer is "no," list the owners and tract descriptions which have actually been consolidated. (Use reverse side of this form if necessary.) _____

No allowable will be assigned to the well until all interests have been consolidated (by communitization, unitization, forced-pooling, or otherwise) or until a non-standard unit, eliminating such interests, has been approved by the Commission.



CERTIFICATION

I hereby certify that the information contained herein is true and complete to the best of my knowledge and belief.

Name **W.B. Martin**

Position
Operator

Company

Date
09/09/82

I hereby certify that the well location shown on this plat was plotted from field notes of actual surveys made by me or under my supervision, and that the same is true and correct to the best of my knowledge and belief.

Date Surveyed

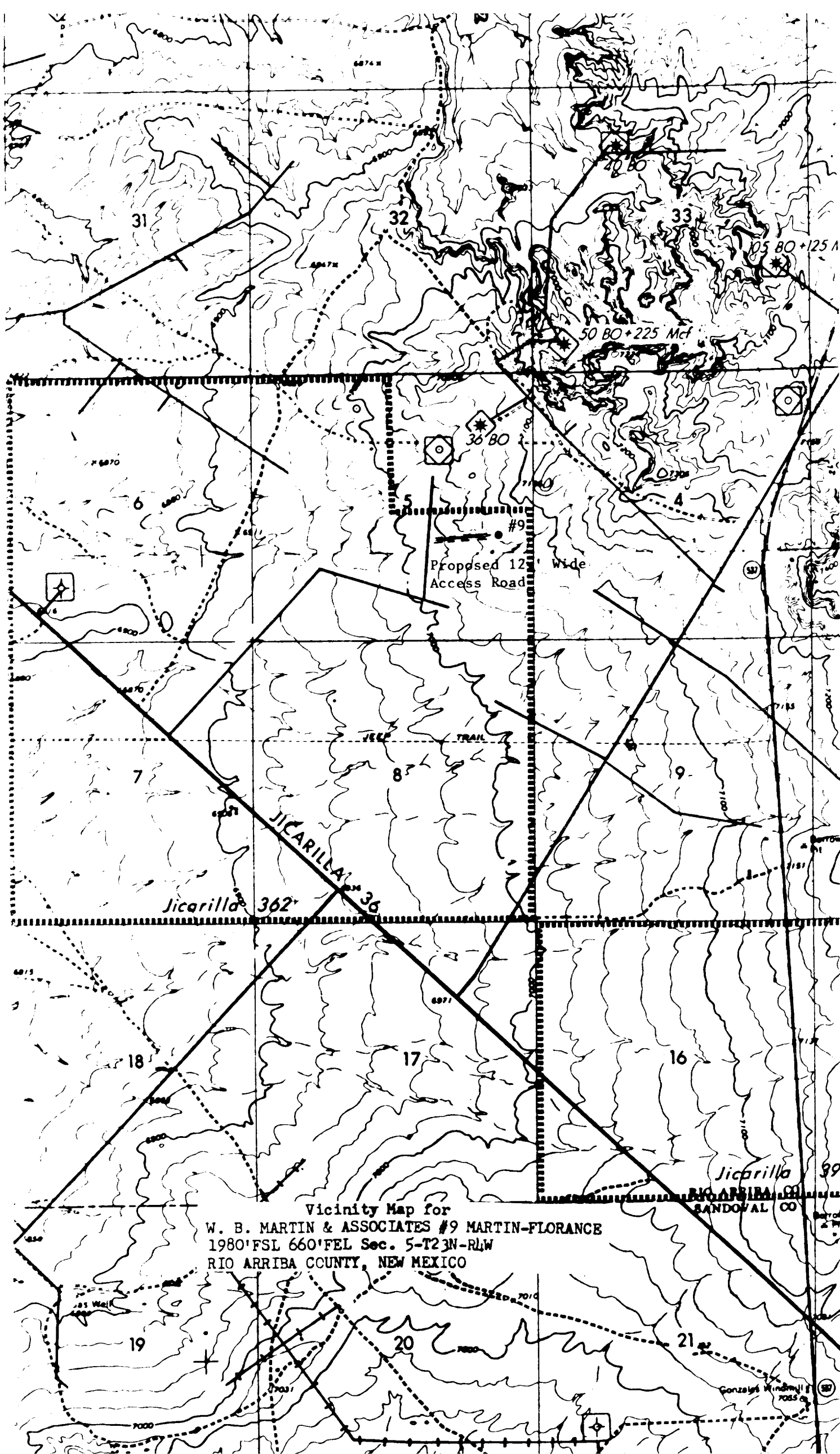
August 19, 1982

Registered Professional Engineer and/or Land Surveyor

Fred B. Kerr Jr.

Certificate No.

3950



Vicinity Map for
W. B. MARTIN & ASSOCIATES #9 MARTIN-FLORANCE
1980'FSL 660'FEL Sec. 5-T23N-RLW
RIO ARriba COUNTY, NEW MEXICO