

UNITED STATES
DEPARTMENT OF THE INTERIOR
GEOLOGICAL SURVEY

SUNDRY NOTICES AND REPORTS ON WELLS

(Do not use this form for proposals to drill or to deepen or plug back to a different reservoir. Use Form 9-331-C for such proposals.)

1. oil ☒ gas ☐ other ☐
well well
2. NAME OF OPERATOR
DUGAN PRODUCTION CORP.
3. ADDRESS OF OPERATOR
P O Box 208, Farmington, NM 87499
4. LOCATION OF WELL (REPORT LOCATION CLEARLY. See space 17 below.)
AT SURFACE: 1800' FNL - 800' FWL
AT TOP PROD. INTERVAL:
AT TOTAL DEPTH:
16. CHECK APPROPRIATE BOX TO INDICATE NATURE OF NOTICE, REPORT, OR OTHER DATA

REQUEST FOR APPROVAL TO:

- TEST WATER SHUT-OFF ☐
FRACTURE TREAT ☐
SHOOT OR ACIDIZE ☐
REPAIR WELL ☐
PULL OR ALTER CASING ☐
MULTIPLE COMPLETE ☐
CHANGE ZONES ☐
ABANDON* ☐

(other) Change Surface Use Plan

SUBSEQUENT REPORT OF:

- ☐
☐
☐
☐
☐
☐
☐
☐
☐
☐

RECEIVED

MAY 18 1983

U. S. GEOLOGICAL SURVEY
FARMINGTON, N. M.

(NOTE: Report results of multiple completion or zone change on Form 9-330.)

17. DESCRIBE PROPOSED OR COMPLETED OPERATIONS (Clearly state all pertinent details, and give pertinent dates, including estimated date of starting any proposed work. If well is directionally drilled, give subsurface locations and measured and true vertical depths for all markers and zones pertinent to this work.)*

We plan to lay pipeline from subject well, along roadway, to existing pipeline as indicated on attached topographic map by authority of our lease rights. Archaeological inspection was performed along the route at the time of the initial pre-drill inspection.

RECEIVED

JUN 15 1983

OIL CON. DIV.
DIST. 3

Subsurface Safety Valve: Manu. and Type _____ Set @ _____ Ft.

18. I hereby certify that the foregoing is true and correct

SIGNED Jerry McHugh TITLE Landman DATE 5-16-83

APPROVED

(This space for Federal or State office use)

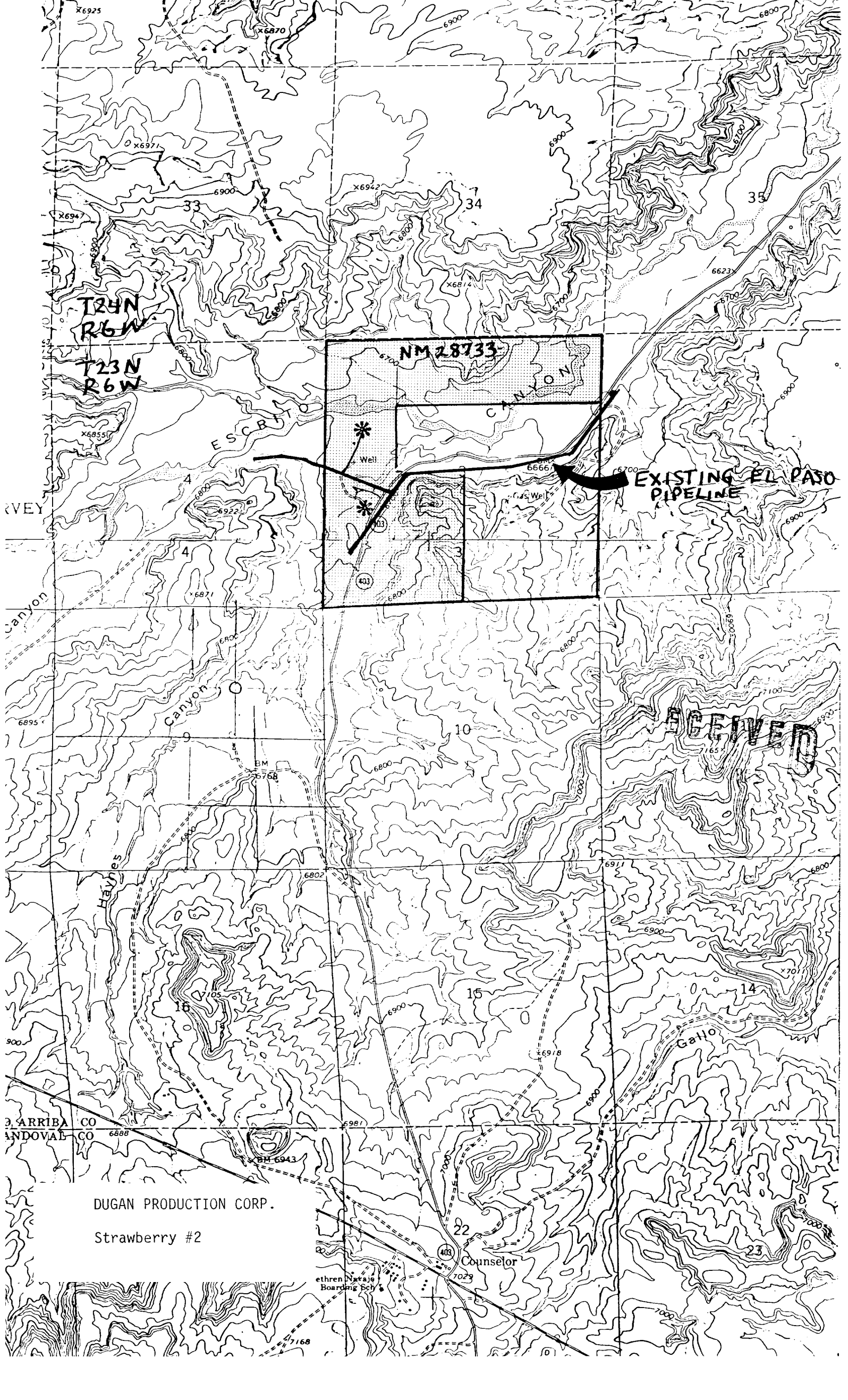
APPROVED BY [Signature] DATE _____
CONDITIONS OF APPROVAL, IF ANY:

JAMES F. SIMS

DISTRICT OIL & GAS SUPERVISOR

NMOCC

*See Instructions on Reverse Side



T24N
R6W

T23N
R6W

NM 28733

EXISTING EL PASO
PIPELINE

RECEIVED

DUGAN PRODUCTION CORP.

Strawberry #2

Counselor

ethren
Boarding