

UNITED STATES  
DEPARTMENT OF THE INTERIOR  
GEOLOGICAL SURVEY

30-039-23285

## APPLICATION FOR PERMIT TO DRILL, DEEPEN, OR PLUG BACK

## 1a. TYPE OF WORK

DRILL ☒DEEPEN ☐PLUG BACK ☐

## b. TYPE OF WELL

OIL  
WELL ☐GAS  
WELL ☐

Commingled

OTHER Gallup/Dakota

SINGLE  
ZONE ☐MULTIPLE  
ZONE ☒

## 2. NAME OF OPERATOR

W. B. Martin &amp; Associates

## 3. ADDRESS OF OPERATOR

2110 North Sullivan, Farmington, New Mexico 87401

## 4. LOCATION OF WELL (Report location clearly and in accordance with any State requirements.)

At surface

780' FNL and 400' FEL

At proposed prod. zone

Same

## 14. DISTANCE IN MILES AND DIRECTION FROM NEAREST TOWN OR POST OFFICE\*

18 miles NW of Cuba

## 15. DISTANCE FROM PROPOSED\*

LOCATION TO NEAREST  
PROPERTY OR LEASE LINE, FT.  
(Also to nearest drlg. unit line, if any)

400' FEL

18. DISTANCE FROM PROPOSED LOCATION\*  
TO NEAREST WELL, DRILLING, COMPLETED,  
OR APPLIED FOR, ON THIS LEASE, FT.

1200' SE

## 21. ELEVATIONS (Show whether DF, RT, GR, etc.)

7354' GR

## 23.

## PROPOSED CASING AND CEMENTING PROGRAM

SIZE OF HOLE	SIZE OF CASING	WEIGHT PER FOOT	SETTING DEPTH	QUANTITY OF CEMENT
12 1/4"	8 5/8" OD J55	24 lbs	250'	236 ft <sup>3</sup> (200 sks)
7 7/8"	5 1/2" OD J55	17 lbs	7580'	See Operations Plan

Proposed Program: 1. Drill 12 1/4" hole to +250'. Run and set 8 5/8" casing.  
Circulate Cement to surface.

2. WOC 12 hours.

3. Install and Pressure Test BOP to 1000 psig.

4. Drill 7 7/8" hole to T.D. using low solids-low water loss mud.

5. Run and set 5 1/2" casing with stage collars and cement.

6. Selectively perforate and stimulate Gallup &amp; Dakota Formation.

RECEIVED

AUG 30 1983

OIL CON. DIV.  
DIST. 3

IN ABOVE SPACE DESCRIBE PROPOSED PROGRAM: If proposal is to deepen or plug back, give data on present productive zone and proposed new productive zone. If proposal is to drill or deepen directionally, give pertinent data on subsurface locations and measured and true vertical depths. Give blowout preventer program, if any.

## 24.

SIGNED

W. B. Martin

TITLE Operator

DATE

6-9-83

(This space for Federal or State office use)

PERMIT NO.

APPROVAL DATE

APPROVED BY

TITLE

CONDITIONS OF APPROVAL, IF ANY:

APPROVED

AS AMENDED

DATE

AUG 24 1983

Robert Moore  
AREA MANAGER  
FARMINGTON RESOURCE AREA

NMGCC

## OIL CONSERVATION DIVISION

STATE OF NEW MEXICO  
OIL AND MINERALS DEPARTMENTP. O. BOX 2088  
SANTA FE, NEW MEXICO 87501Form C-107  
Revised 10-1-78

All distances must be from the outer boundaries of the Section.

Operator <b>W. B. MARTIN &amp; ASSOCIATES, INC.</b>			Lease <b>MARTIN-FLORANCE</b>		Well No. <b>A-398</b>
Unit Letter <b>A</b>	Section <b>15</b>	Township <b>23N</b>	Range <b>4W</b>	County <b>Rio Arriba</b>	
Actual Footage Location of Well:					
780 feet from the North line and		400 feet from the East line			
Ground Level Elev: <b>7354</b>	Producing Formation <b>Gallup Dakota Comm. m. l. d.</b>	Pool <b>South Windwith Gallup Dakota</b>	Dedicated Acreage: <b>40</b> Acres		

1. Outline the acreage dedicated to the subject well by colored pencil or hatchure marks on the plat below.
2. If more than one lease is dedicated to the well, outline each and identify the ownership thereof (both as to working interest and royalty).
3. If more than one lease of different ownership is dedicated to the well, have the interests of all owners been consolidated by communitization, unitization, force-pooling, etc?

RECEIVED

AUG 30 1983

☐ Yes ☒ No If answer is "yes," type of consolidation

If answer is "no," list the owners and tract descriptions which have actually been consolidated. (Use reverse side of this form if necessary.)

No allowable will be assigned to the well until all interests have been consolidated (by communitization, unitization, forced-pooling, or otherwise) or until a non-standard unit, eliminating such interests, has been approved by the Commission.

Sec.		780'	
		400'	
15		RECEIVED JUN 10 1983 U. S. GEOLOGICAL SURVEY FARMINGTON, N. M.	

Scale: 1"=1000'

## CERTIFICATION

I hereby certify that the information contained herein is true and complete to the best of my knowledge and belief.

Name

Billy Martin

Position

Operator Representative

Company

W.B. Martin &amp; Associates Inc.

Date

June 6, 1983

I hereby certify that the well location shown on this plat was plotted from field notes of actual surveys made by me or under my supervision, and that the same is true and correct to the best of my knowledge and belief.

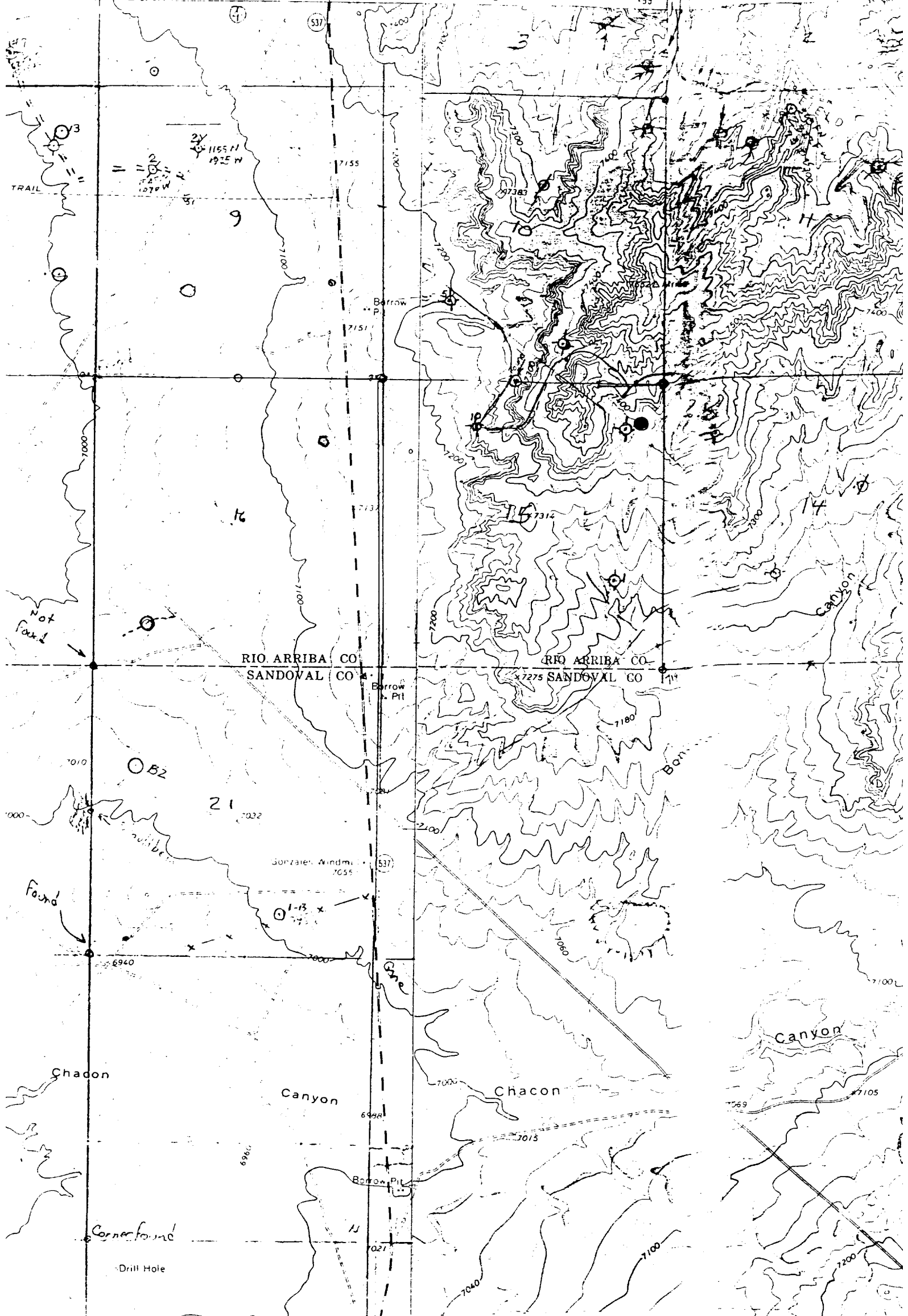
Date Surveyed

May 31, 1983

Registered Professional Engineer and Land Surveyor

Fred B. Kerry Jr.

Certificate No. 3950



Vicinity Map for  
W. B. MARTIN & ASSOC., INC. # A-398 MARTIN-FLORANCE  
780'FNL 400'FEL Sec. 15-T23N-R4W  
RIO ARRIBA COUNTY, NEW MEXICO